



LG 49WQ95C LED and LCD Monitor Instruction Manual

[Home](#) » [LG](#) » LG 49WQ95C LED and LCD Monitor Instruction Manual 

Contents

- 1 LG 49WQ95C LED and LCD Monitor
- 2 Product Information
- 3 Product Usage Instructions
- 4 WHAT'S INCLUDE
- 5 INSTALLATION
- 6 PORTS
- 7 POWER
- 8 Dimensions
- 9 Documents / Resources
 - 9.1 References
- 10 Related Posts



LG 49WQ95C LED and LCD Monitor



Product Information

The Monitor LCD LED (Monitor LED) model 49WQ95C/49BQ95C/49WQ95X is a high-quality monitor manufactured by LG. It features a sleek design and advanced display technology to provide an immersive viewing experience.

Specifications

- **Dimensions (With Stand):** 1215.1 x 585.8 x 281.0 mm
- **Dimensions (Without Stand):** 1215.1 x 365.7 x 114.2 mm
- **Weight (With Stand):** 14.7 kg
- **Weight (Without Stand):** 12.6 kg
- **Recommended Resolution:** 5120 x 1440
- **Vertical Frequency:** 144 Hz

Power Requirements

The monitor operates on a voltage range of 100-240 V~ and a frequency of 50/60 Hz. The maximum current consumption is 2.5 A.

Product Usage Instructions

Setting up the Monitor

Follow the steps below to set up the monitor:

1. Place the monitor on a stable and level surface.
2. If using the stand, attach it securely to the back of the monitor.
3. Connect the power adapter to the monitor and plug it into a power outlet.
4. Connect your computer or other devices to the monitor using the appropriate cables (HDMI, DisplayPort, etc.).
5. Turn on the monitor by pressing the power button.

Adjusting Display Settings

To optimize the display settings, follow these steps:

1. Press the menu button on the monitor to access the on-screen display (OSD) menu.
2. Use the navigation buttons to navigate through the menu options.
3. Adjust settings such as brightness, contrast, color temperature, and gamma according to your preference.
4. Save the changes and exit the OSD menu.

Troubleshooting

If you encounter any issues with the monitor, refer to the troubleshooting section of the user manual. It provides solutions to common problems and helpful tips for troubleshooting.

Cleaning and Maintenance

To keep your monitor in optimal condition, follow these cleaning and maintenance guidelines:

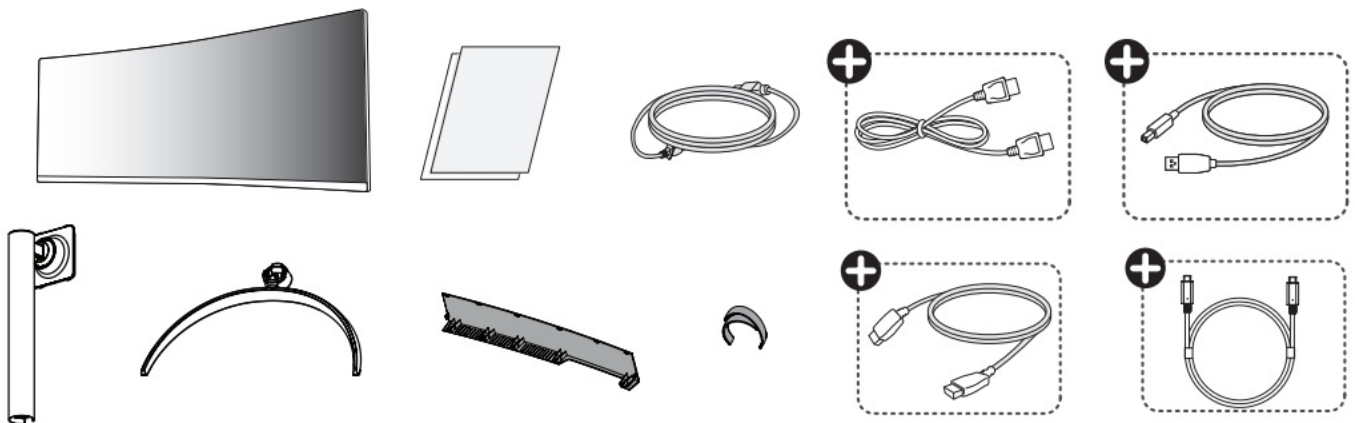
- Power off the monitor and unplug it before cleaning.
- Use a soft, lint-free cloth to wipe the screen gently.
- Avoid using harsh chemicals or abrasive cleaners that may damage the screen or casing.
- Regularly dust the monitor and its components to prevent buildup.

Frequently Asked Questions (FAQ)

• **Q: How long are spare parts available for this monitor?**

A: Spare parts are available for 5 years after the end of production. Spare parts include base assembly, adapter, and cables. For more information, visit <https://lgparts.com/>

WHAT'S INCLUDE



- For EPEAT (EPEAT applied model)
- Spare parts are available for 5 years after the end of production.
- Spare parts include base assembly, adapter, and cables.
- It may differ by model, you can get more information by visiting to this website: <https://lgparts.com/>



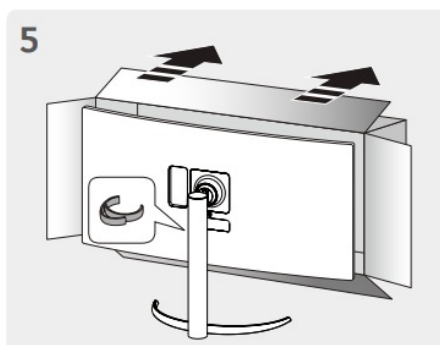
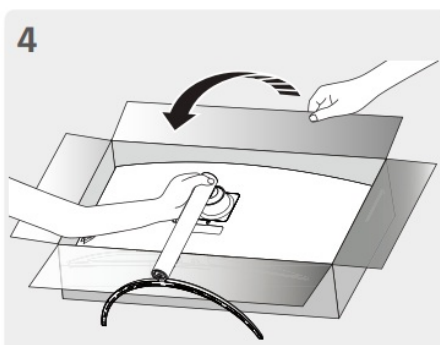
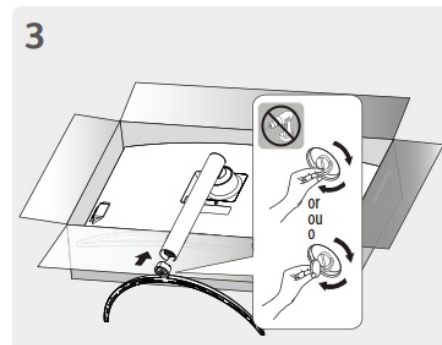
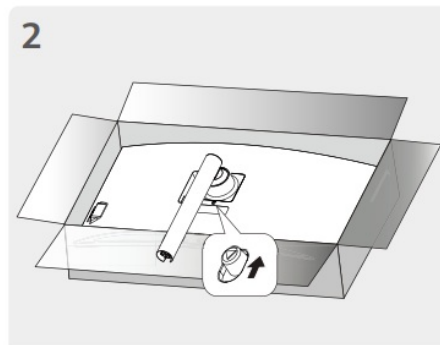
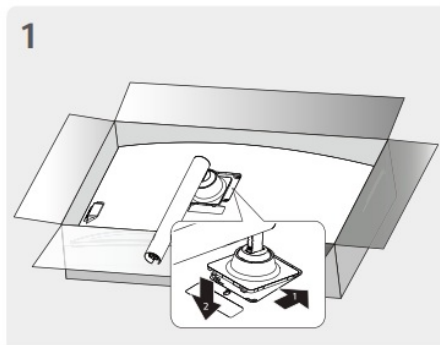
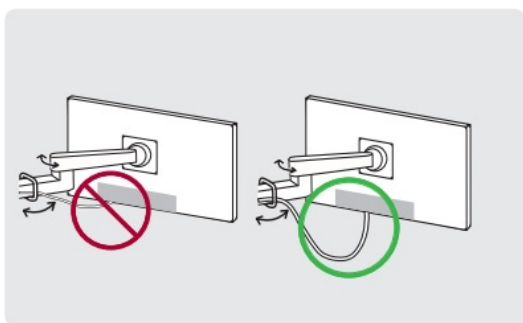
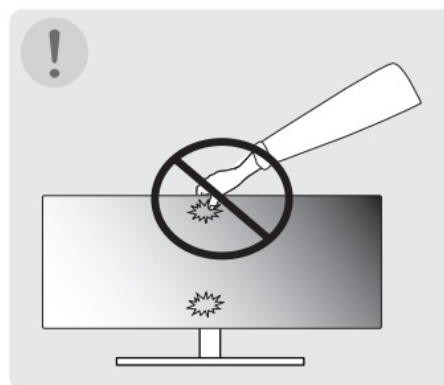
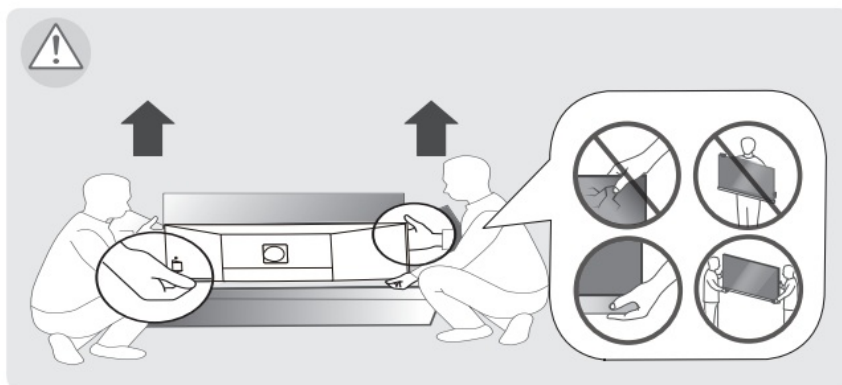
Quick Setup Guide

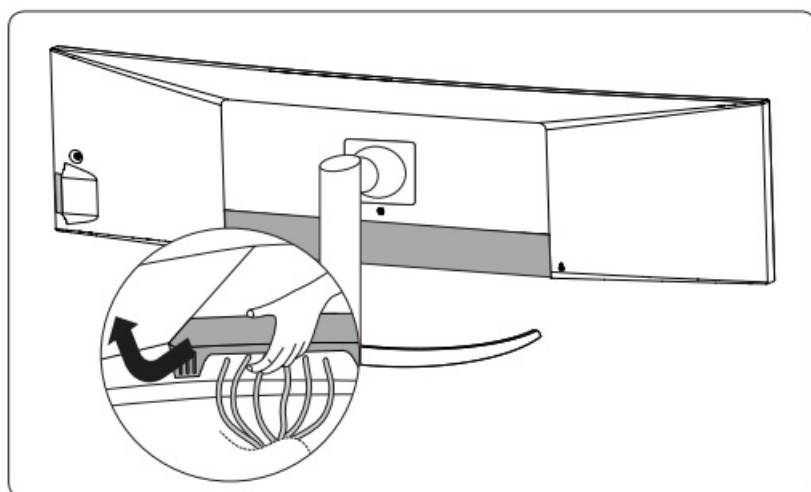
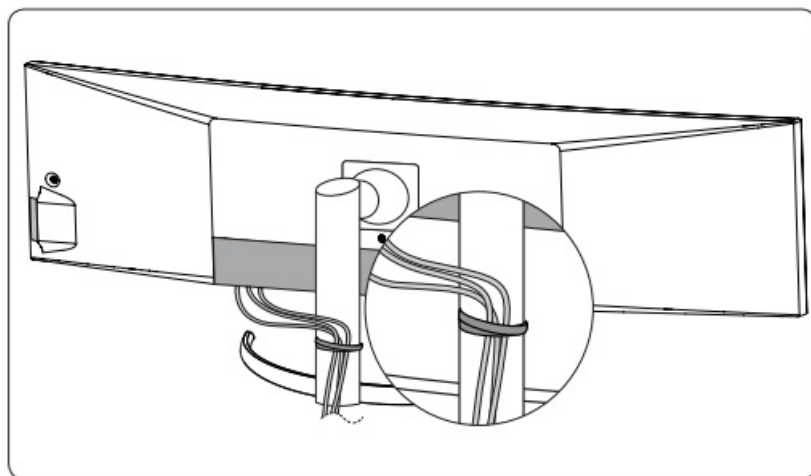
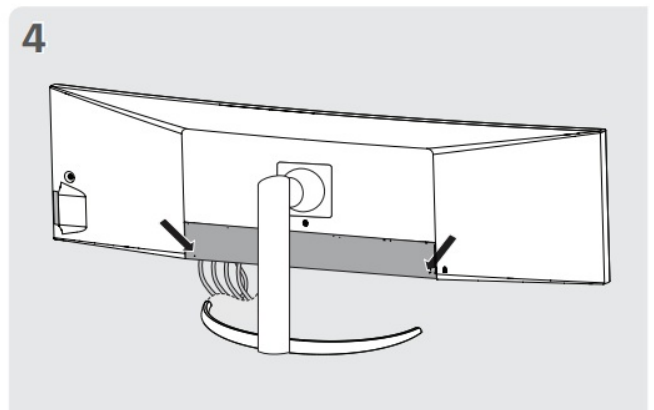
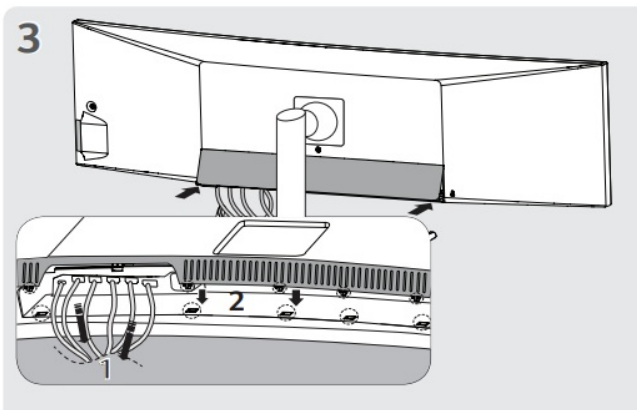
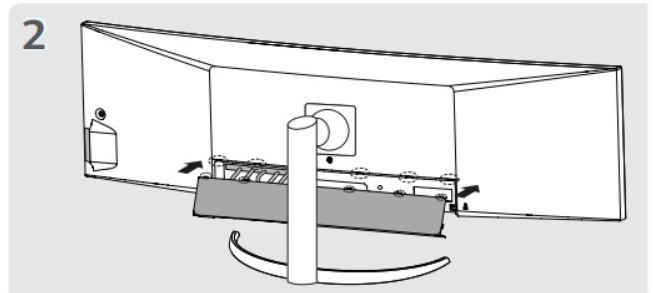
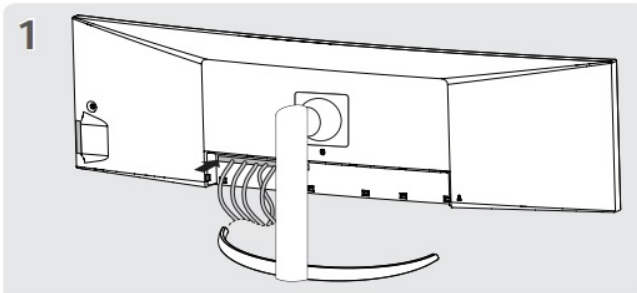
Please read this manual carefully before operating your set and retain it for future reference.

It is recommended that use the supplied components.

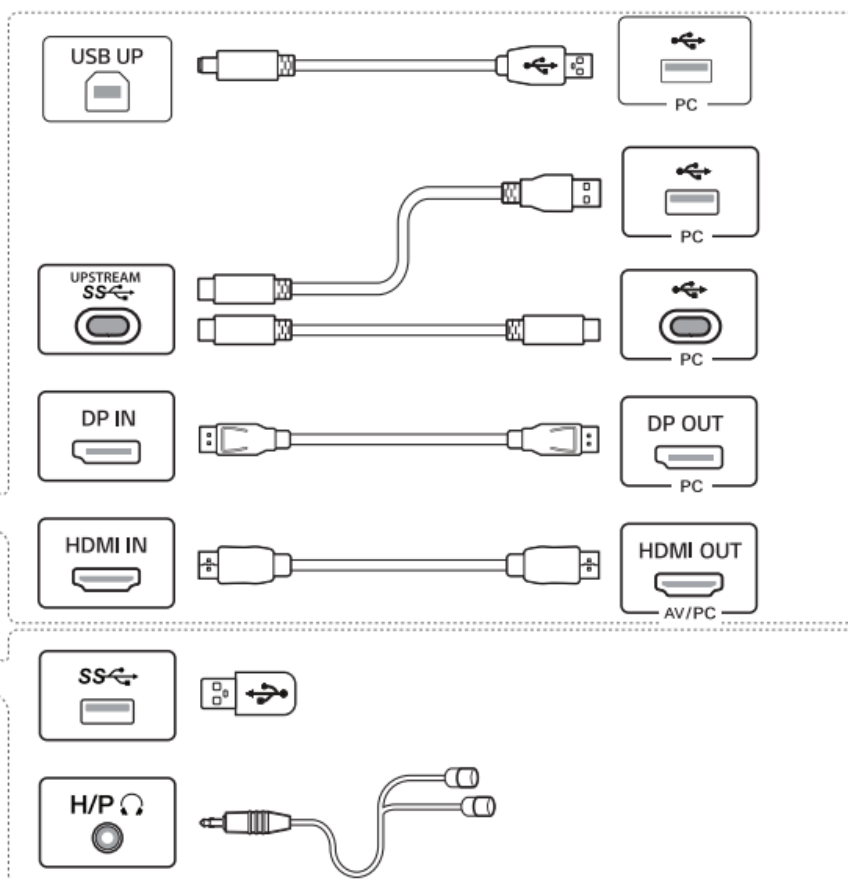
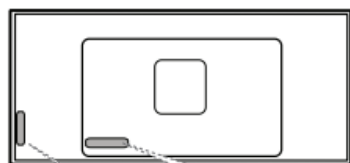
You can download manuals from the LGE website. www.lg.com

INSTALLATION



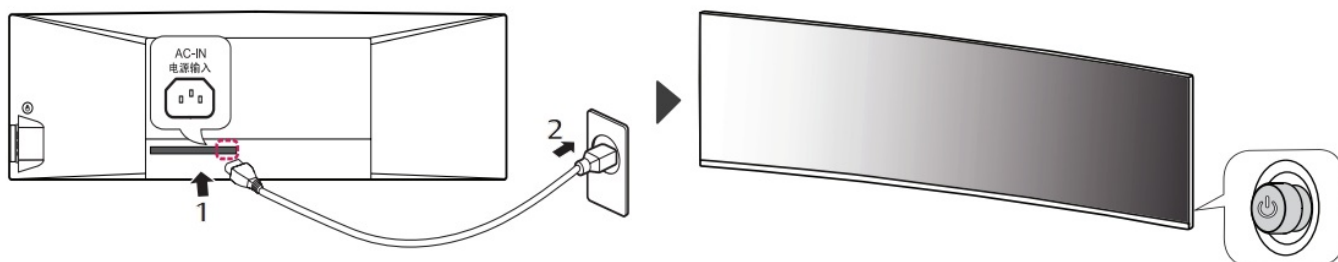


PORTS



- Using a DVI to HDMI / DP (DisplayPort) to HDMI cable may cause compatibility issues.
- The USB port on the product functions as a USB hub.
- Make sure to use the supplied cable. Otherwise, this may cause the device to malfunction.

POWER



Dimensions



Dimensions (Width x Height x Depth)			Weight		Recommend Resolut ion	Vertical Frequency
Eng lish	With Stand	Without Stand	With Sta nd	Without St and	5120 x 1440	144 Hz
	1215.1 x 585.8 x 281.0 (mm)	1215.1 x 365.7 x 114.2 (mm)	14.7 kg	12.6 kg		
	47.8 x 23.0 x 11.0 (inches)	47.8 x 14.3 x 4.4 (inches)	32.4(lbs)	27.7(lbs)		

Documents / Resources



[LG 49WQ95C LED and LCD Monitor](#) [pdf] Instruction Manual
49WQ95C, 49BQ95C, 49WQ95X, 49WQ95C LED and LCD Monitor, LED and LCD Monitor, LCD Monitor, Monitor

References

-  [LG Electronics & Home Appliances | Shop Now | LG USA](#)
-  [LG Parts & Accessories](#)
- [User Manual](#)