



LG 49WL95CP-W Computer Monitor Instruction Manual

[Home](#) » [LG](#) » LG 49WL95CP-W Computer Monitor Instruction Manual 

Contents

- 1 LG 49WL95CP-W Computer Monitor
- 2 Product Information
- 3 Product Usage Instructions
- 4 Dismantling information
- 5 Product Identification
- 6 Materials and components for Selective Treatment
- 7 Tools Required
- 8 Product Disassembly Process
- 9 Disassembly of External enclosure
- 10 Documents / Resources
- 11 Related Posts



LG 49WL95CP-W Computer Monitor



Product Information

The product is a monitor with the model name 49WL9***. It contains hazardous substances like Pb and BFRs which are covered by exemptions under the RoHS directive. The monitor must be disposed of in authorized handling plants to reduce emissions as much as possible. The product contains various materials and components that require selective treatment, such as Printed Circuit Boards (PCB), Batteries, Mercury containing components, Liquid Crystal Displays (LCD) with a surface greater than 100 square cm, Capacitors / condensers (Containing PCB / PCT), Electrolytic Capacitors / Condensers measuring greater than 2.5 cm in diameter or height, External electric cables cords, Gas Discharge Lamps, Plastics containing Brominated Flame Retardants, Components and waste containing asbestos, Components, parts and materials containing refractory ceramic fibers, Components, parts and materials containing radioactive substances.

Product Usage Instructions

1. Displays must be stored in accordance with the requirements stipulated in Appendix VIII (1) or (2) of Directive 2012/12/EU and must be stored in a weatherproof manner. Containers with covers must be used when storing and transporting the Displays.
2. To remove batteries from the remote control, remove the back cover of the remote control first.
3. To remove batteries from the PCB Assembly, remove the back cover of the product first.
4. To disassemble the product to remove PCBs and LCD Module, remove the back cover of the display by hand and screwdriver. This will expose the accessible electronic units (PCBs), which can now be easily removed with hand and screwdriver. The LCD module (together with their casing) is only left after all other parts like electronic units and casing have been removed.
5. To remove the power cord and signal cables, unplug the power cord from the back of the display by hand or detach the cables provided from the product.
6. To remove capacitors > 25 mm, use a nipper to remove them from the power supply units.

Note: The disassembly process requires tools like screwdriver, nipper, and plastic Hera jig.

Dismantling information

The document is intended for use by end-of-life recyclers or treatment facilities. It provides the basic instructions for the disassembly of LG products to remove components and materials requiring selective treatment

Product Identification

- Type of Product Monitor
- Model name 49WL9***

Displays must be stored in accordance with the requirements stipulated in Appendix VIII (1) or (2) of Directive 2012/12/EU and must, amongst other things, be stored in a weatherproof manner. Containers with covers must be used when storing and transporting the Displays

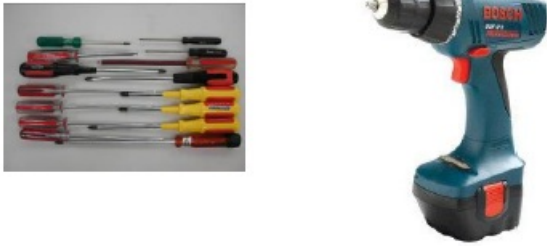


Materials and components for Selective Treatment

Displays may contain hazardous substances like Pb and BFRs which are covered by exemptions under the RoHS directive. However, the majority is present in the PCB assembly. In order to reduce emissions as much as possible, a complete disposal of the old appliance is required. This treatment may only be performed in authorized handling plants

Materials and components	Notes	Quantity of items included in product
Printed Circuit Boards (PCB) or Printed Circuit Assemblies (PCA)	With a surface greater than 10 square cm	1
Batteries	For Remote control	1
	Internal batteries	0
Mercury containing components	display backlights	0
Liquid Crystal Displays (LCD) with a surface greater than 100 square cm	Includes background illuminated displays with gas discharge lamps	1
Capacitors / condensers (Containing PCB / PCT)		0
Electrolytic Capacitors / Condensers measuring greater than 2.5 cm in diameter or height		1
External electric cables cords	Power cord	1
	Signal cable	3
Gas Discharge Lamps		0
Plastics containing Brominated Flame Retardants		0
Components and waste containing asbestos		0
Components, parts and materials containing refractory ceramic fibers		0
Components, parts and materials containing radioactive substances		0

Tools Required

List the type that would typically be used to disassemble the product to a point where components and materials requiring selective treatment can be removed.

Tool Description	Tool information
Screw driver	
Nipper	
Plastic Hera Jig	

Product Disassembly Process

Batteries

Batteries can easily be removed from the remote control once the back cover of the remote control has been removed.

PCBs and LCD Module

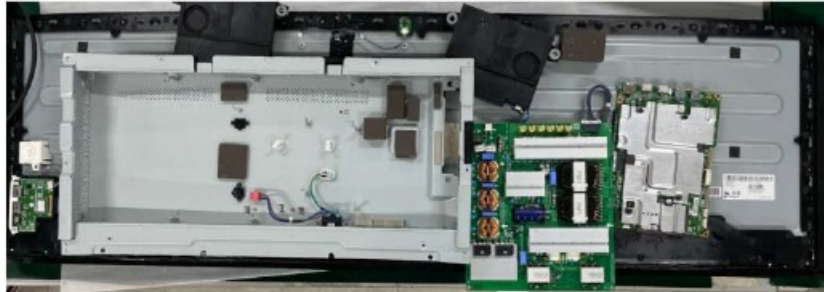
- The back cover of the display can easily be removed by hand and screw driver.



- Once removed this will expose the accessible electronic units (PCBs),



- which can now be easily removed with hand and screw driver.



- LCD module(together with their casing) is only left after all other parts like electronic units and casing have been removed



Power cord and signal cables

A Power cord plugged into the back of the display can easily be removed by hand or cables are provided as de-attached from the product



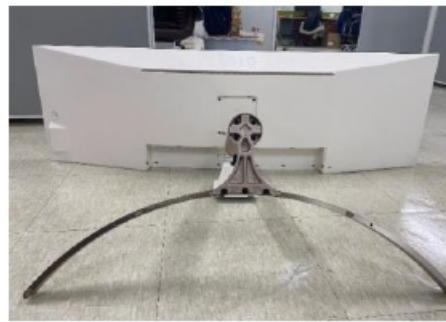
Capacitors > 25 mm

Capacitors > 25 mm are located in the power supply units and can be removed by nipper



Disassembly of External enclosure

- Unscrew the stand base by using coin



- Push button and lift the stand body and remove the screw(4EA)



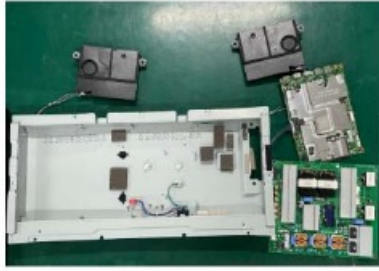
- Overturn the set and disassemble the latches of three edges



- Disassemble the back cover




- Re-overturn the set and disassemble screw 4EA and disassemble the PCB Monitor Only)



LCD Module



Documents / Resources



Dismantling Information

The information in this manual is for the safe and correct dismantling of the product. It is not intended to be used for the repair of the product. It is not intended to be used for the repair of the product. It is not intended to be used for the repair of the product.

Product Identification

Type of Product	Monitor
Model name	49WL95CP-W

Copyright © 2024 LG Electronics. All rights reserved. LG Electronics and the LG logo are registered trademarks of LG Electronics. All other trademarks are the property of their respective owners.

LG 49WL95CP-W Computer Monitor [pdf] Instruction Manual

49WL95CP-W Computer Monitor, 49WL95CP-W, Computer Monitor, Monitor

Contents

- Materials and components for Dissection Treatment
- Tools Required
- Product Identification Process
- Disassembly of External enclosure