



LG 38WP85C LED LCD Monitor Instruction Manual

[Home](#) » [LG](#) » LG 38WP85C LED LCD Monitor Instruction Manual 

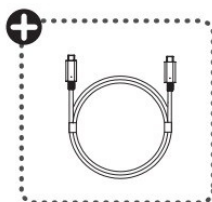
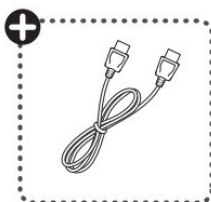
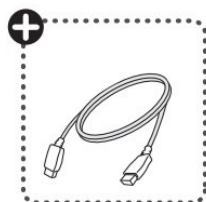
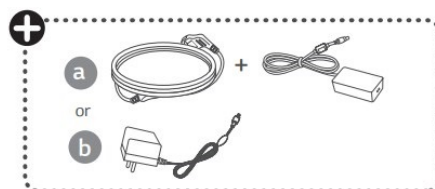
LG 38WP85C LED LCD Monitor Instruction Manual



Contents

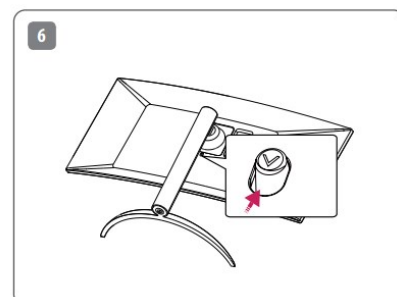
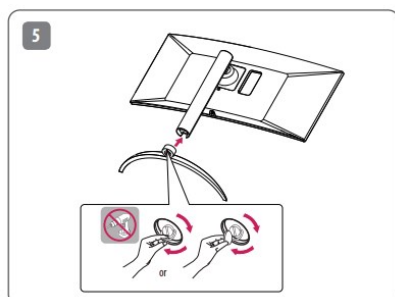
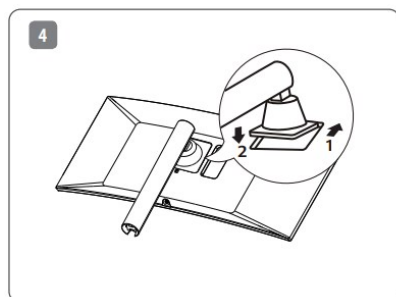
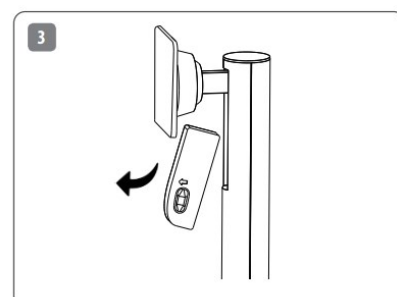
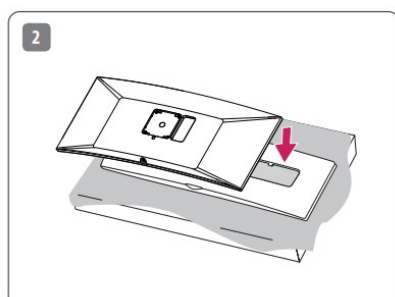
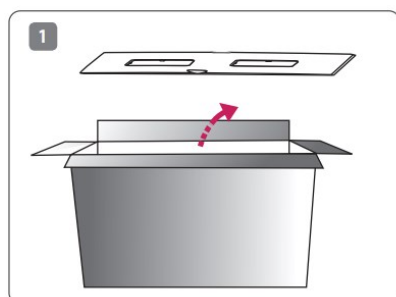
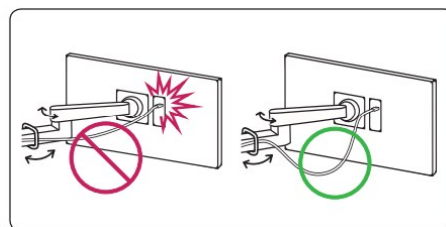
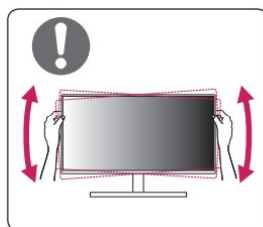
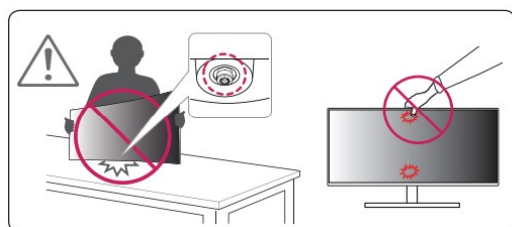
- [1 What In The Box](#)
- [2 Cleaning Instructions](#)
- [3 Connecting](#)
- [4 Safety Instructions](#)
- [5 Power Instructions](#)
- [6 Service](#)
- [7 Documents / Resources](#)
 - [7.1 References](#)

What In The Box

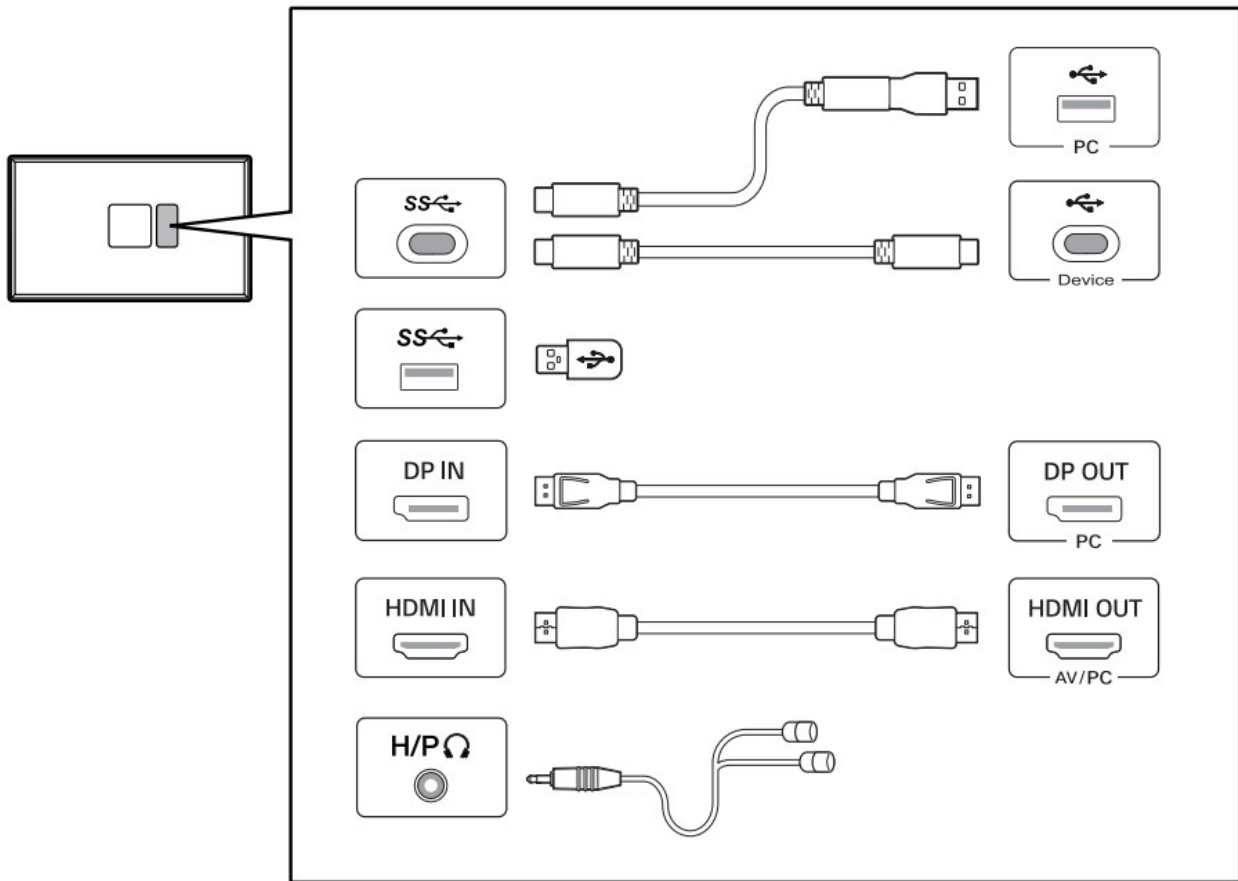


It is recommended that use the supplied components.

Cleaning Instructions



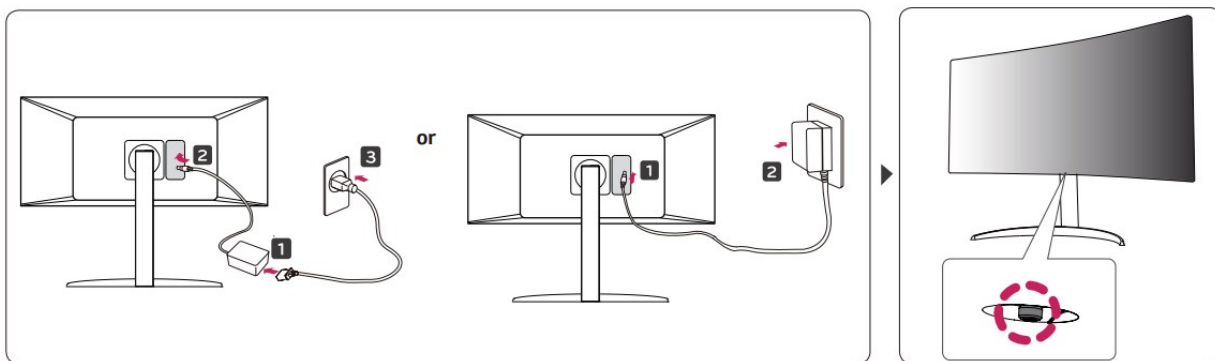
Connecting



Safety Instructions

- Using a DVI to HDMI / DP (DisplayPort) to HDMI cable may cause compatibility issues.
- The USB port on the product functions as a USB hub.
- Make sure to use the supplied cable. Otherwise, this may cause the device to malfunction

Power Instructions



Service

You can download manuals from the LGE website:

www.lg.com



Documents / Resources



[LG 38WP85C LED LCD Monitor](#) [pdf] Instruction Manual

38WP85C, 38WP85CP, 38WP85C LED LCD Monitor, LED LCD Monitor, LCD Monitor, Monitor

References

-  [LG Electronics & Home Appliances](#) | [Shop Now](#) | [LG USA](#)

Manuals+.