



[Home](#) » [LG](#) » **LG 34WR50QK LED and LCD Computer Monitor Instruction Manual** 

Contents [[hide](#)]

- [1 LG 34WR50QK LED and LCD Computer Monitor](#)
- [2 Product Information](#)
- [3 Product Usage Instructions](#)
- [4 WHAT IN THE BOX](#)
- [5 PARTS AND TOOLS](#)
- [6 CONECTING](#)
- [7 POWER](#)
- [8 FAQ \(Frequently Asked Questions\)](#)
- [9 Documents / Resources](#)
 - [9.1 References](#)



LG 34WR50QK LED and LCD Computer Monitor



Product Information

Specifications

- Model Number: 805001365
- Origin: Printed in Mexico
- Manufacturing Date: 11/12/2024

Product Usage Instructions

Setting up the Product

1. Unbox the product carefully.
2. Connect the necessary cables and power source as per the user manual.
3. Power on the product using the designated power button.

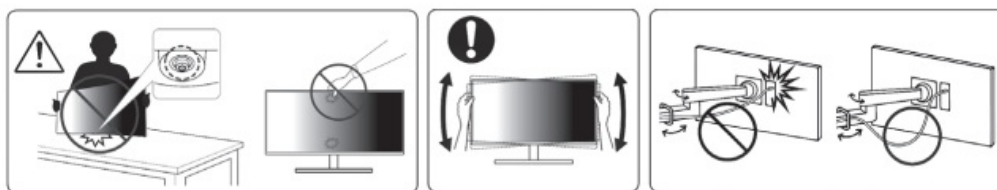
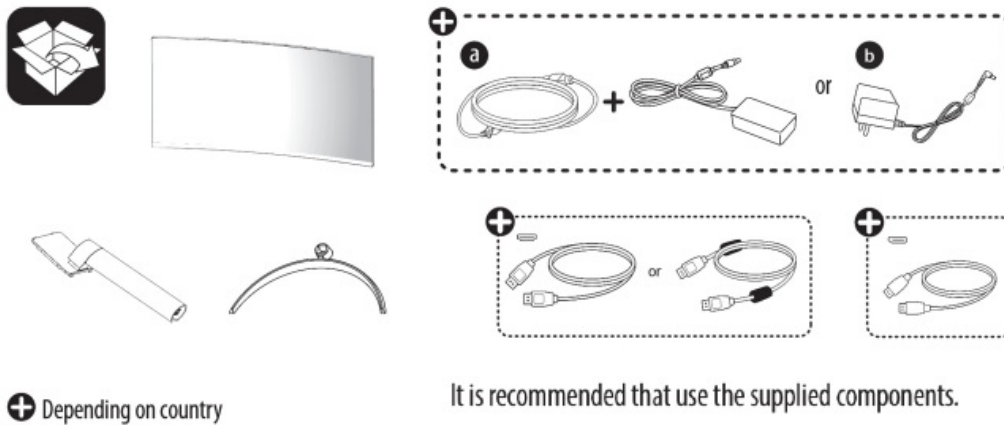
Operating the Product

1. Follow the on-screen instructions for initial setup.
2. Refer to the user manual for detailed operation guidelines.
3. Explore the various features and functionalities of the product.

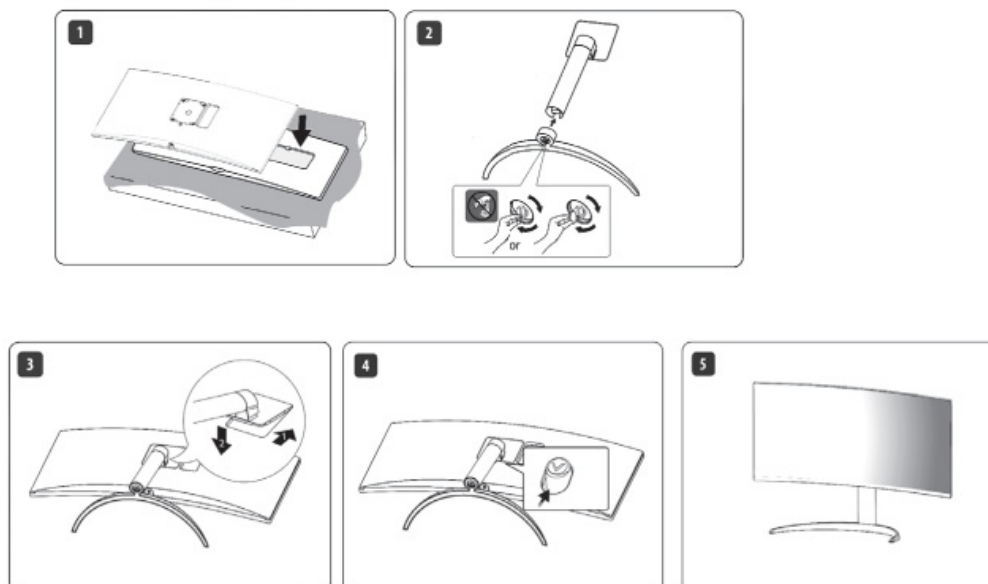
Maintenance

1. Regularly clean the product with a soft, dry cloth.
2. Avoid exposure to extreme temperatures or moisture.
3. For technical issues, refer to the troubleshooting section of the user manual.

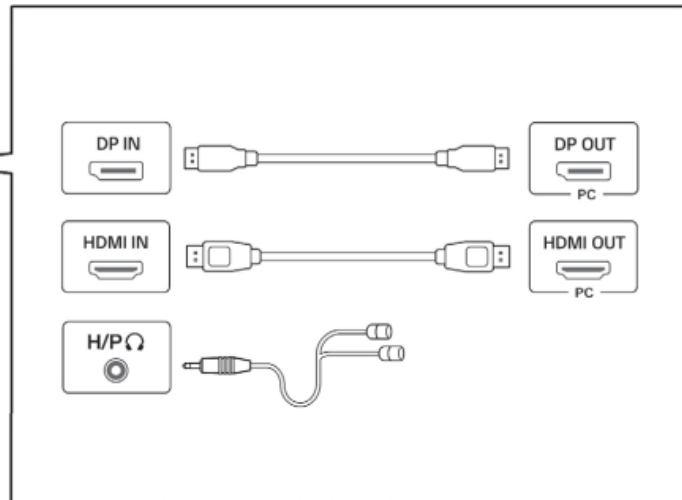
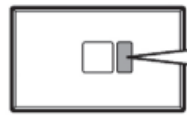
WHAT IN THE BOX



PARTS AND TOOLS



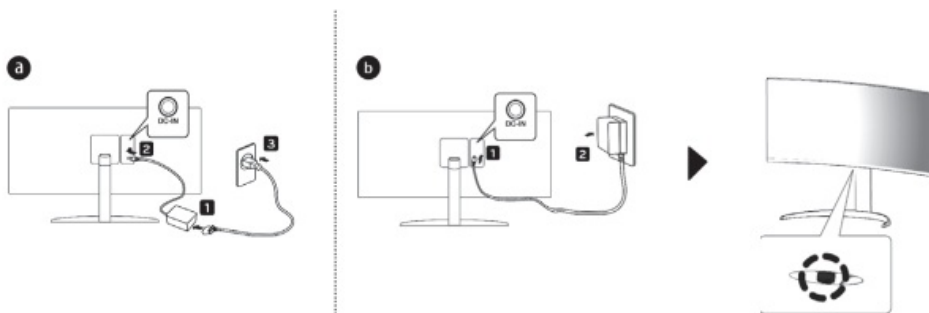
CONNECTING



WARRENTY

Using a DVI to HDMI / DP (DisplayPort) to HDMI cable may cause compatibility issues. Make sure to use the supplied cable. Otherwise, this may cause the device to malfunction.

POWER



- Accessory type and quantity may vary depending on the model.
- The image shown here is for illustrative purposes only and may be subject to change.
- The cables mentioned in this guide is not supplied with your unit.
- The images shown here are for illustrative purposes only and may be subject to change; the actual descriptions of the control panel and their locations may vary depending on the model.

PRINTED IN MEXICO / SC: 11/12/2024_TAB

Elbrd: J.E. / OBPN: *MBM67489685*

SHDML: 34WR50QC_B

805001365



FAQ (Frequently Asked Questions)

- **Q:** What should I do if the product does not power on?
 - **A:** Ensure that the power source is connected correctly and try a different power outlet. If the issue persists, contact customer support.
- **Q:** How often should I clean the product?
 - **A:** It is recommended to clean the product at least once a week to maintain its performance and longevity.
- **Q:** Can I use third-party accessories with this product?
 - **A:** To ensure optimal performance and safety, it is recommended to use accessories approved by the manufacturer.

Documents / Resources

	LG 34WR50QK LED and LCD Computer Monitor [pdf] Instruction Manual 34WR50QC, 34WR50QK, 34WR50QK LED and LCD Computer Monitor, LED and LCD Computer Monitor, LCD Computer Monitor, Computer Monitor
--	--

References

- [User Manual](#)

LG

34WR50QC, 34WR50QK, 34WR50QK LED and LCD Computer Monitor, Computer Monitor, LCD Computer Monitor, LED and LCD Computer Monitor, LG

Leave a comment

Your email address will not be published. Required fields are marked *

Comment *

Name

Email

Website

☐ Save my name, email, and website in this browser for the next time I comment.

Post Comment

Search:

e.g. whirlpool wrf535swhz

Search

[Manuals+](#) | [Upload](#) | [Deep Search](#) | [Privacy Policy](#) | [@manuals.plus](#) | [YouTube](#)

This website is an independent publication and is neither affiliated with nor endorsed by any of the trademark owners. The "Bluetooth®" word mark and logos are registered trademarks owned by Bluetooth SIG, Inc. The "Wi-Fi®" word mark and logos are registered trademarks owned by the Wi-Fi Alliance. Any use of these marks on this website does not imply any affiliation with or endorsement.