



LG 32MR50C LED and LCD Computer Monitor User Guide

[Home](#) » [LG](#) » LG 32MR50C LED and LCD Computer Monitor User Guide 

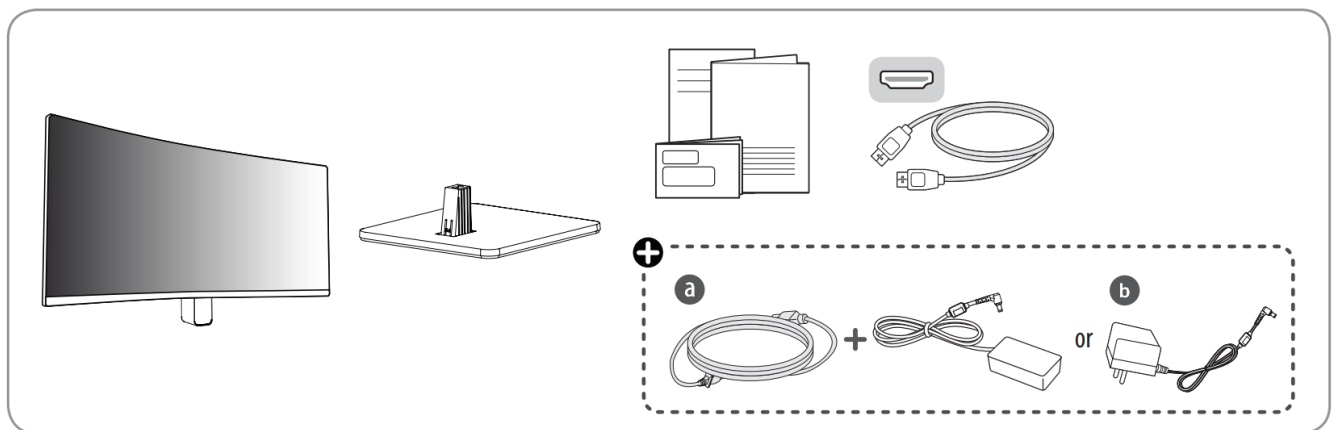
LG 32MR50C LED and LCD Computer Monitor



Contents

- 1 BOX CONTENT
- 2 SAFETY PRECAUTIONS
- 3 INSTALLATION INSTRUCTIONS
- 4 SWITCH CONNECTION
- 5 POWER CONNECTION
- 6 CUSTOMERS SUPPORT
- 7 Documents / Resources
 - 7.1 References
- 8 Related Posts

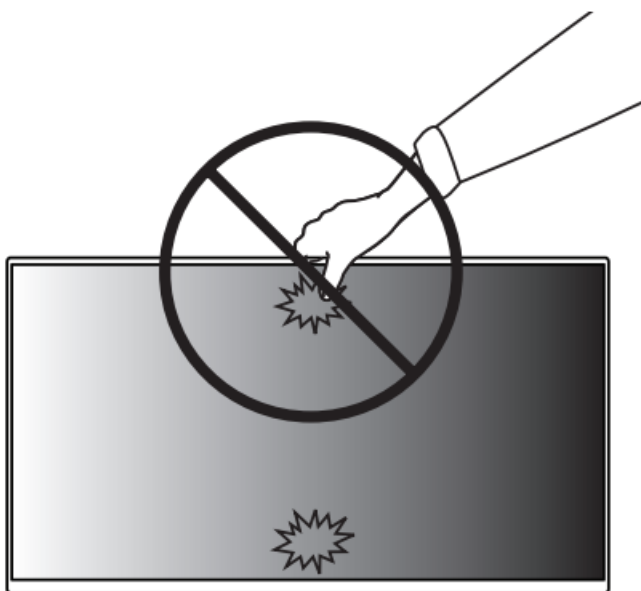
BOX CONTENT



Depending on country

It is recommended that use the supplied components.

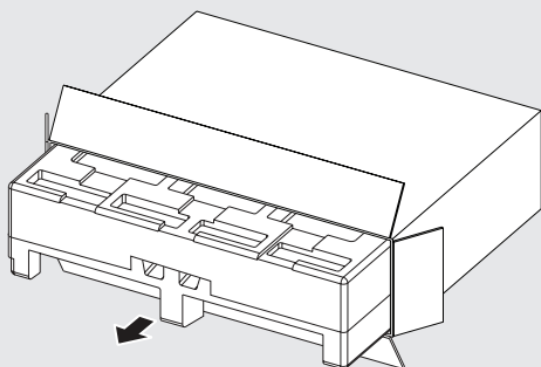
SAFETY PRECAUTIONS



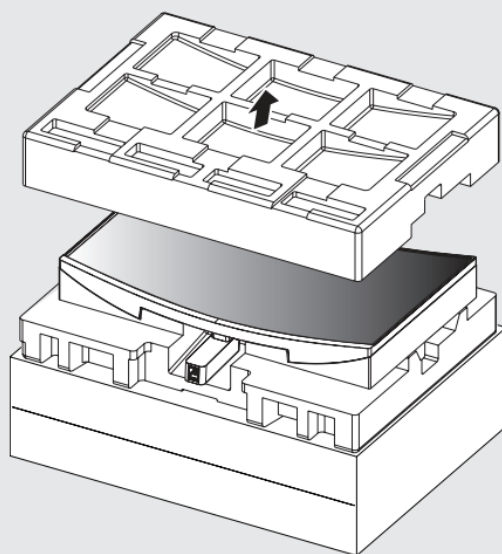
INSTALLATION INSTRUCTIONS



1

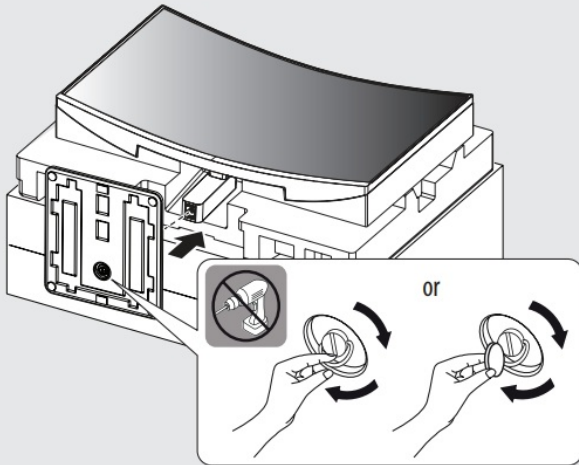


2

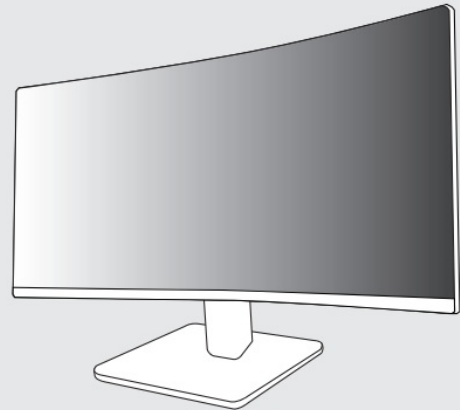




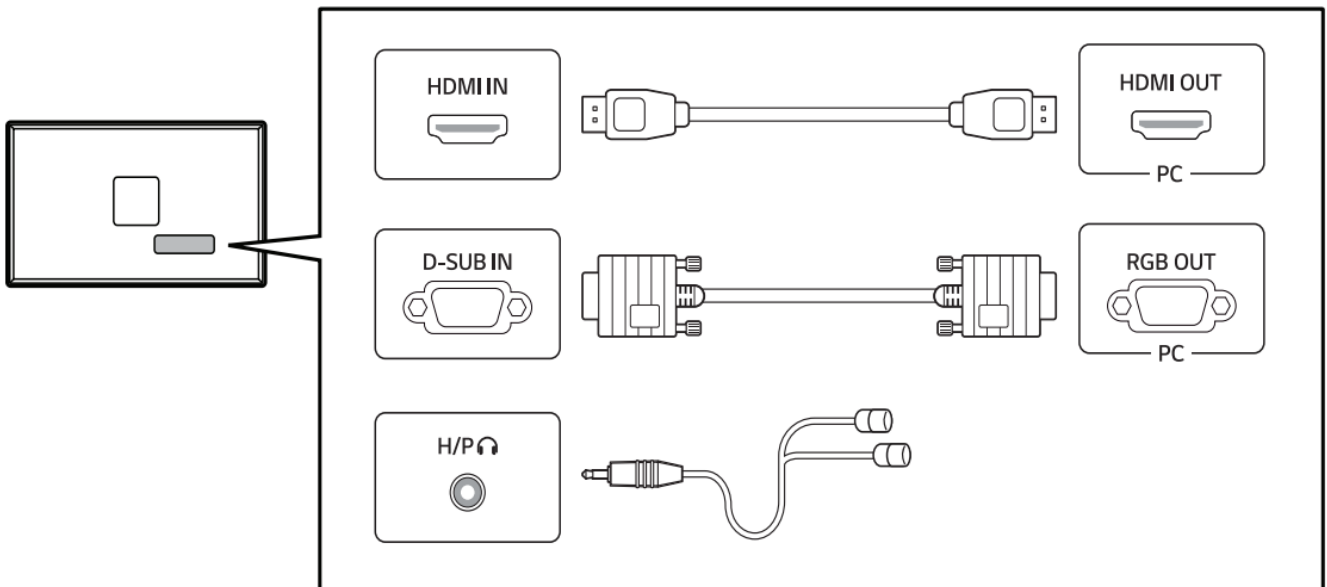
3



4

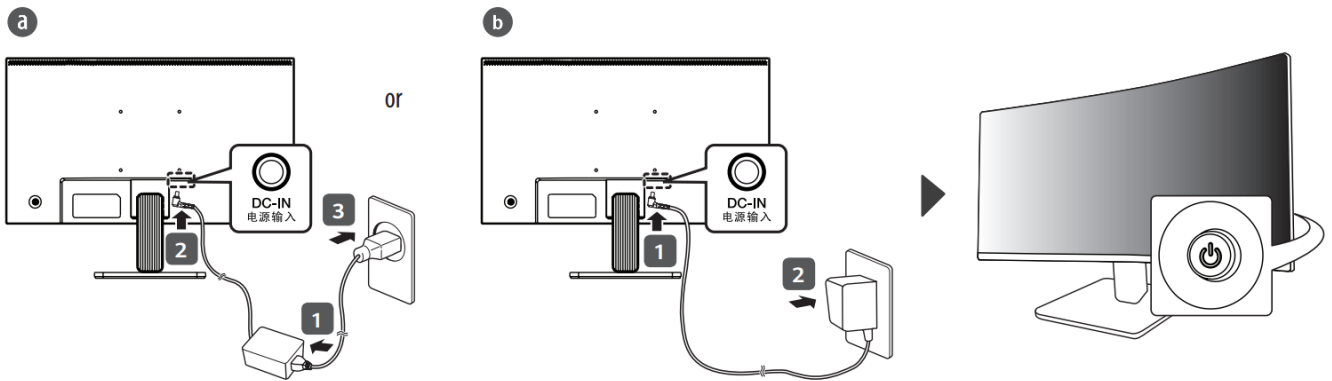


SWITCH CONNECTION



- Using a DVI to HDMI / DP (DisplayPort) to HDMI cable may cause compatibility issues.
- Make sure to use the supplied cable. Otherwise, this may cause the device to malfunction.

POWER CONNECTION



CUSTOMERS SUPPORT

You can download manuals from the LGE website.

OWNER'S MANUAL AND REGULATORY INFO. are available at <https://www.lg.com/au/support/manuals>.



PLEASE READ SAFETY INFORMATION BEFORE INSTALLATION AND USE. SCAN QR CODE TO ACCESS.





www.lg.com

Copyright 2023 LG Electronics Inc. All Rights Reserved.



 Quick Setup Guide LED LCD COMPUTER MONITOR (20" Computer Model) 	LG 32MR50C LED and LCD Computer Monitor [pdf] User Guide 32MR50C, MBM67545706, 32MR50C LED and LCD Computer Monitor, LED and LCD Computer Monitor, LCD Computer Monitor, Computer Monitor, Monitor
--	---

References

-  [LG Electronics & Home Appliances | Shop Now | LG USA](#)
-  [LG Manuals, Instructions & User Guides | LG Australia](#)
- [User Manual](#)

Manuals+.