

LG 27UQ85R LED and LCD Computer Monitor



LG 27UQ85R LED and LCD Computer Monitor User Guide

[Home](#) » [LG](#) » LG 27UQ85R LED and LCD Computer Monitor User Guide 

Contents

- [1 LG 27UQ85R LED and LCD Computer Monitor](#)
- [2 Product Information](#)
- [3 Product Usage Instructions](#)
- [4 Instruction](#)
- [5 Installation](#)
- [6 Documents / Resources](#)
 - [6.1 References](#)
- [7 Related Posts](#)



LG 27UQ85R LED and LCD Computer Monitor



Product Information

Specifications

- Model: LED LCD COMPUTER MONITOR
- Models Available: 27UQ85R, 27BQ85UR, 27UQ85RV, 27BQ85RV, 32UQ85R, 32BQ85UR, 32UQ85RV, 32BQ85RV
- Manufacturer: LG Electronics Inc.
- Website: <https://www.lg.com/au/support/manuals>
- Copyright: 2022 LG Electronics Inc. All Rights Reserved

Product Usage Instructions

1. Download the owner's manual and regulatory information from the provided website.
2. Read the safety information thoroughly before installation and use.
3. Ensure you have all the supplied components for proper setup.
4. Scan the QR code provided to access additional resources.
5. Based on your country, follow the recommended usage guidelines.

Installation Guide

1. Place the monitor on a stable surface.
2. Connect the monitor to your computer using the appropriate cables (HDMI, DisplayPort, etc.).

3. Plug in the power adapter to a power source and connect it to the monitor.
4. Power on both the monitor and the computer.
5. Adjust the settings using the on-screen menu for optimal viewing experience.

Troubleshooting Tips

- If the monitor is not displaying properly, check the cable connections.
- Ensure that the monitor is receiving power and turned on.
- Refer to the owner's manual for detailed troubleshooting steps.

Maintenance

Regularly clean the monitor screen with a soft, dry cloth to remove dust and smudges.

FAQ

- **Q: Where can I download the owner's manual?**

A: You can download the owner's manual from the LG Electronics website at the provided link.

- **Q: What should I do if my monitor is not turning on?**

A: Check the power connections and ensure that both the monitor and computer are powered on. If issues persist, refer to the troubleshooting section in the manual.

- **Q: Can I wall-mount this monitor?**

A: Please refer to the owner's manual for information on wall-mounting options and compatibility.

Quick Setup Guide

LED LCD COMPUTER MONITOR
(LED Computer Monitor)

You can download manuals from the LGE website.

OWNER'S MANUAL AND REGULATORY INFO. are available at <https://www.lg.com/au/support/manuals>.

PLEASE READ SAFETY INFORMATION BEFORE INSTALLATION AND USE. SCAN QR CODE TO ACCESS.

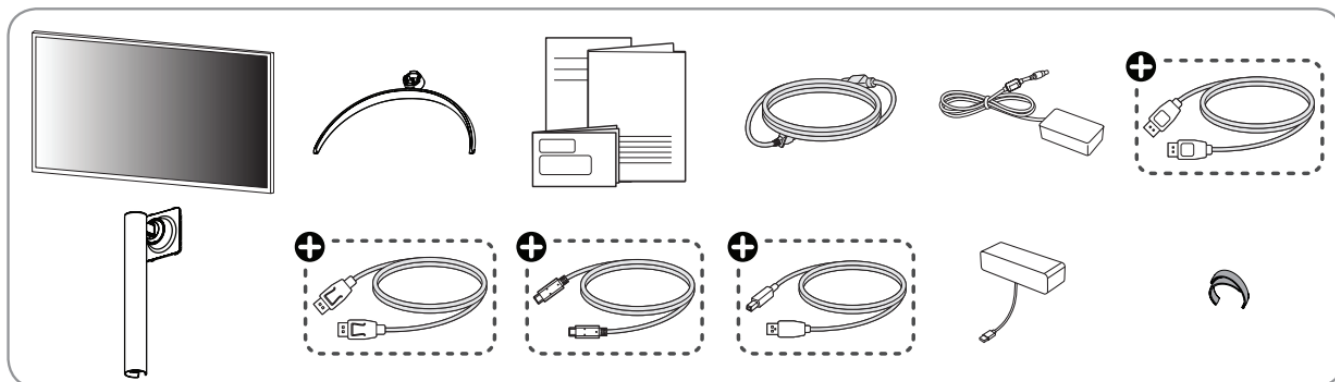


- 27UQ85R
- 32UQ85R
- 27BQ85UR
- 32BQ85UR
- 27UQ85RV
- 32UQ85RV
- 27BQ85RV

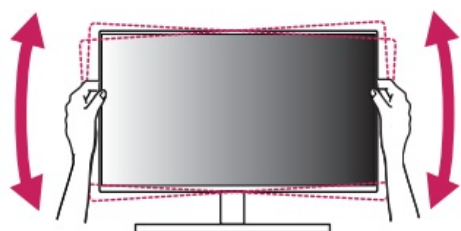
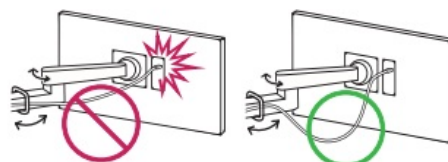
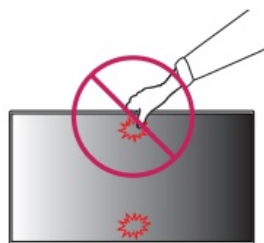
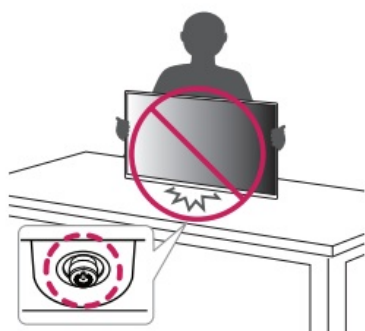
- 32BQ85RV

Depending on country

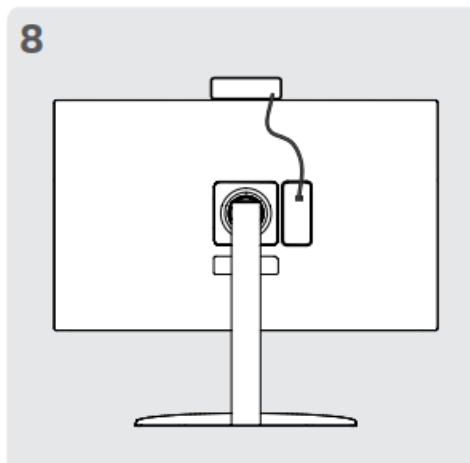
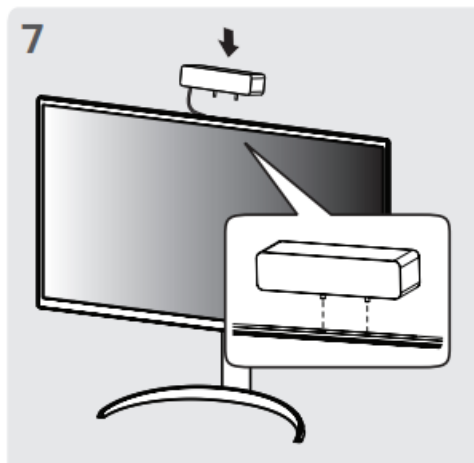
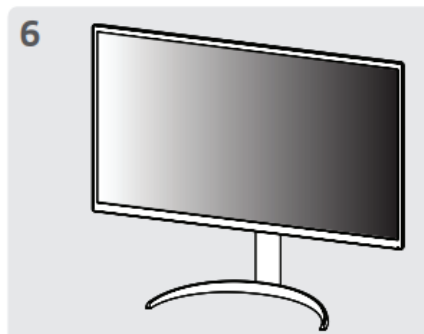
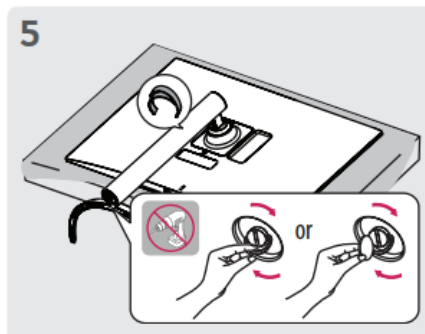
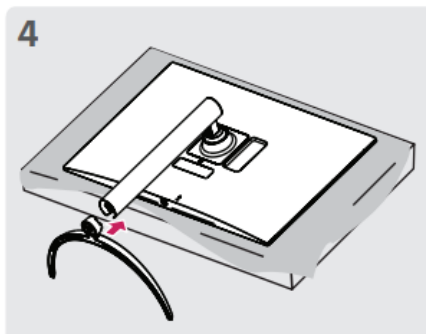
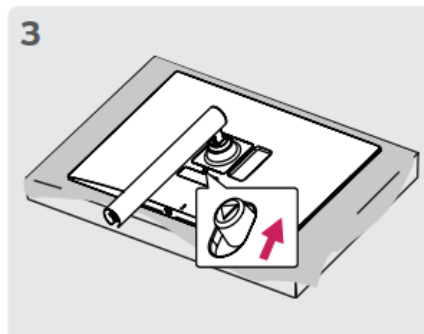
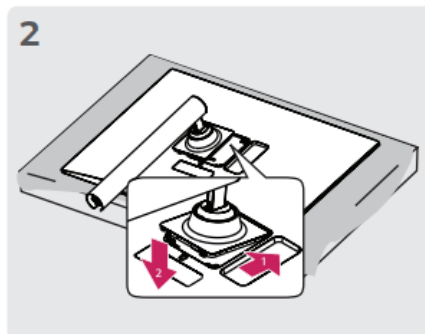
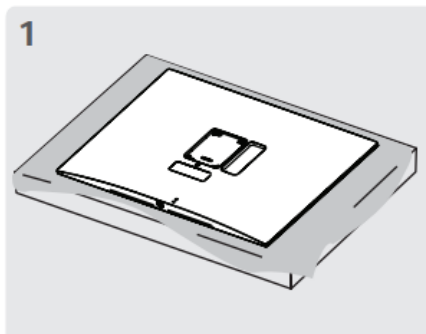
It is recommended that use the supplied components.

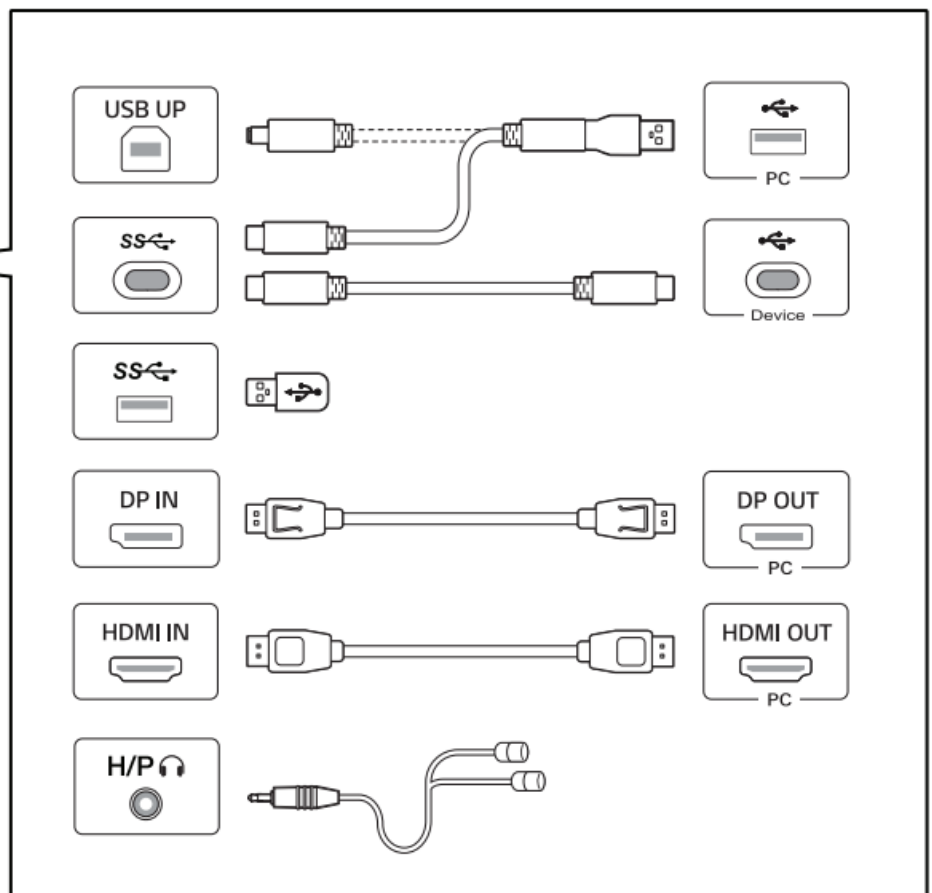
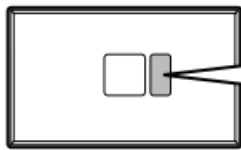
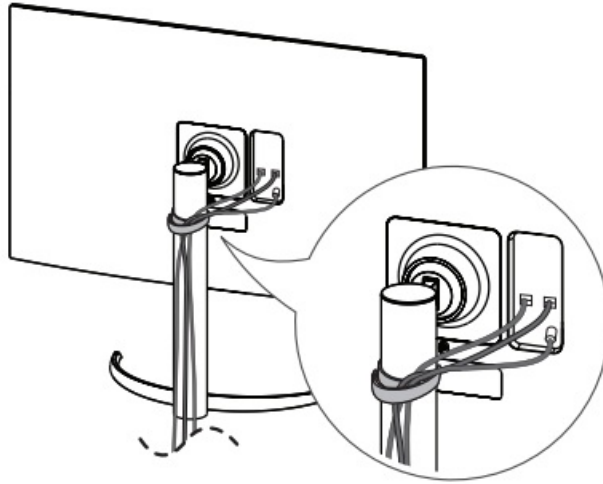


Instruction

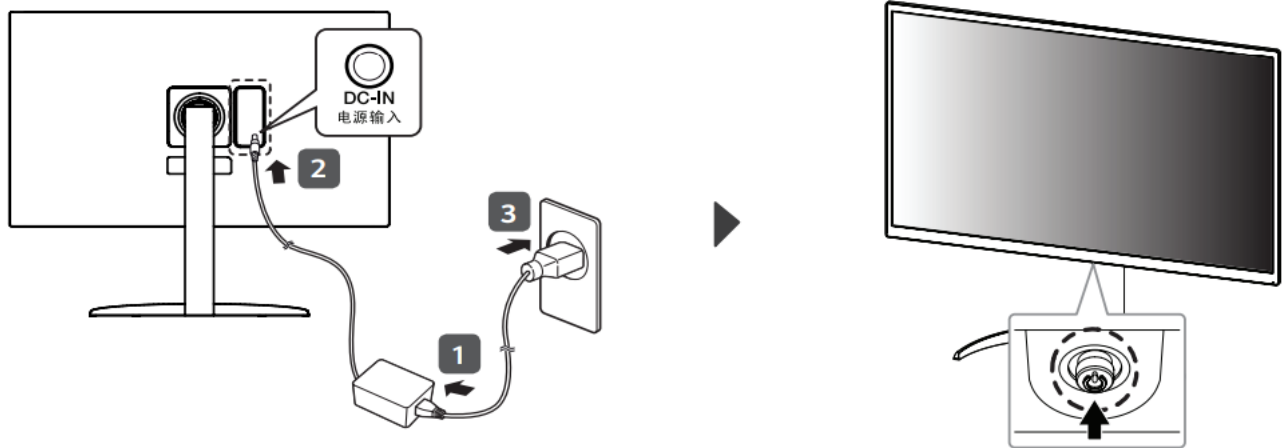


Installation






- Using a DVI to HDMI / DP (DisplayPort) to HDMI cable may cause compatibility issues.
- The USB port on the product functions as a USB hub.
- Make sure to use the supplied cable. Otherwise, this may cause the device to malfunction.



Documents / Resources

 Quick Start Guide LED LCD COMPUTER MONITOR 27UQ85R	LG 27UQ85R LED and LCD Computer Monitor [pdf] User Guide 27UQ85R, 27UQ85R LED and LCD Computer Monitor, LED and LCD Computer Monitor, LCD C omputer Monitor, Computer Monitor, Monitor
---	--

References

- [LG Electronics & Home Appliances | Shop Now | LG USA](#)
- [LG Manuals, Instructions & User Guides | LG Australia](#)
- [User Manual](#)

Manuals+. Privacy Policy

This website is an independent publication and is neither affiliated with nor endorsed by any of the trademark owners. The "Bluetooth®" word mark and logos are registered trademarks owned by Bluetooth SIG, Inc. The "Wi-Fi®" word mark and logos are registered trademarks owned by the Wi-Fi Alliance. Any use of these marks on this website does not imply any affiliation with or endorsement.