



Lexman LDSENK18 Wireless Smart Motion Sensor Instruction Manual

[Home](#) » [lexman](#) » Lexman LDSENK18 Wireless Smart Motion Sensor Instruction Manual 

Contents

- 1 Lexman LDSENK18 Wireless Smart Motion Sensor
- 2 WHAT'S INCLUDE
- 3 START UP
- 4 Product description
- 5 CHARACTERISTICS & CAPABILITIES
- 6 INSTALLATION
- 7 SPECIFICATION
- 8 SAFETY WARNINGS
- 9 BATTERY REPLACEMENT
- 10 EU Declaration of conformity
- 11 Documents / Resources
 - 11.1 References
- 12 Related Posts

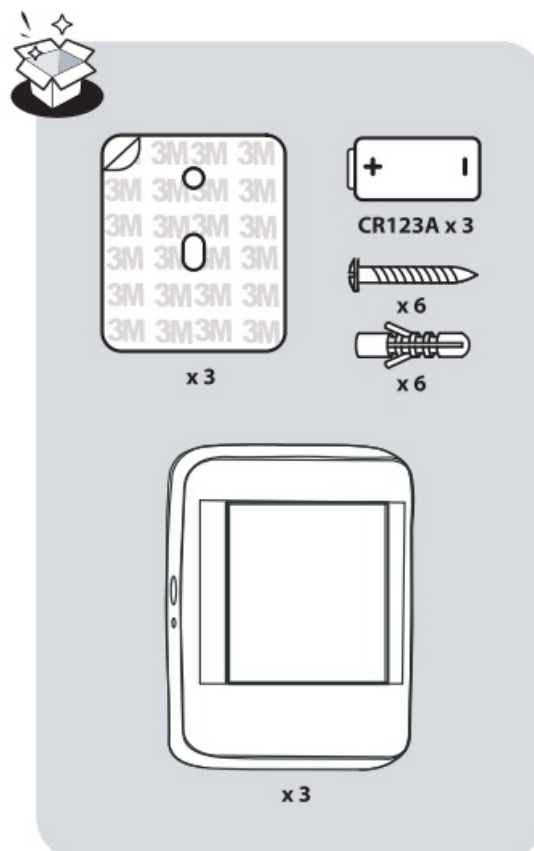


Lexman LDSENK18 Wireless Smart Motion Sensor



IMPORTANT: This product requires an ENKI box to operate.

WHAT'S INCLUDE



START UP

- **Step 1**
Open the ENKI app and log in.
- **Step 2**

In the “my objects” tab, click on the “+” button.

- **Step 3**

Select the LEXMAN brand and choose the product from the list.

- **Step 4**

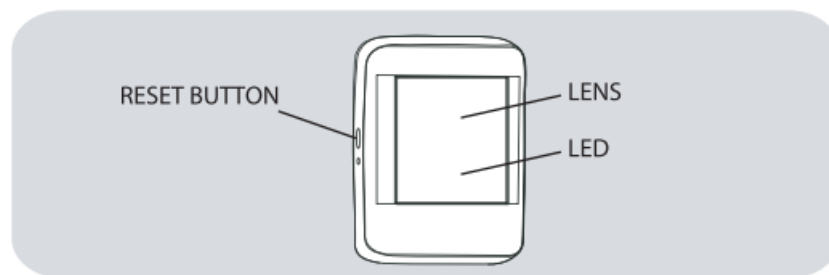
Follow the instructions described on the application screens. The ENKI box will automatically recognize your object.

Product description

The motion sensor allows you to know when a motion is detected in its detection area and can, using a scenario, trigger different actions in response to this movement.

CHARACTERISTICS & CAPABILITIES

- Pets immunity up to 25 kg.
- Easy to install with a stand, or to place on a piece of furniture.
- Alert via app, low battery
- Equipped with an anti-tearing switch that signals the removal of the sensor from its holder.



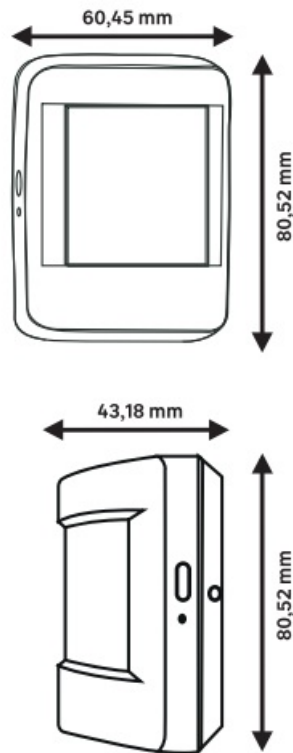
1. Reset/pairing:

Press and hold the reset button for 3 seconds and then release the button to reset the sensor.

2. LED indicator:

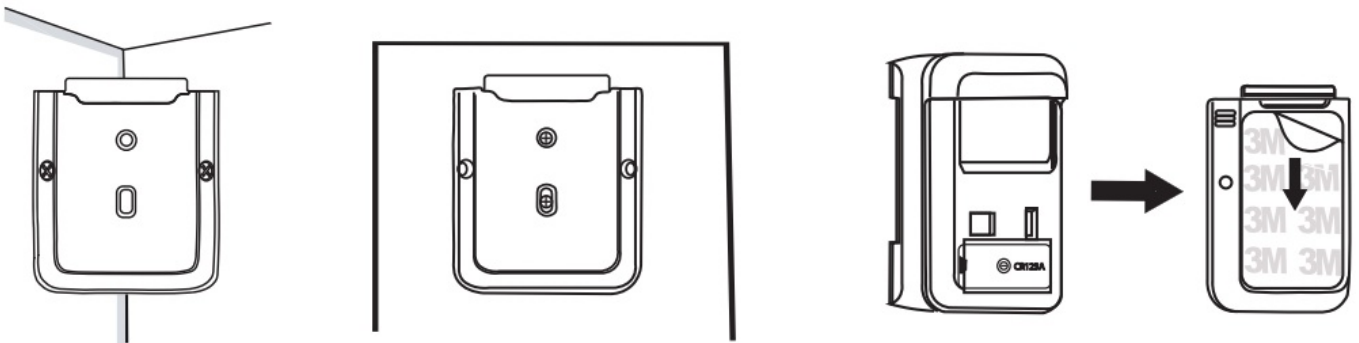
If the sensor has not been associated to your ENKI box, the LED indicator will flash approximately once per second. The LED indicator will switch off when the sensor is successfully associated to your ENKI box.

DIMENSION



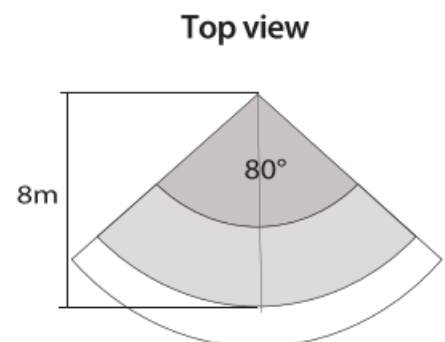
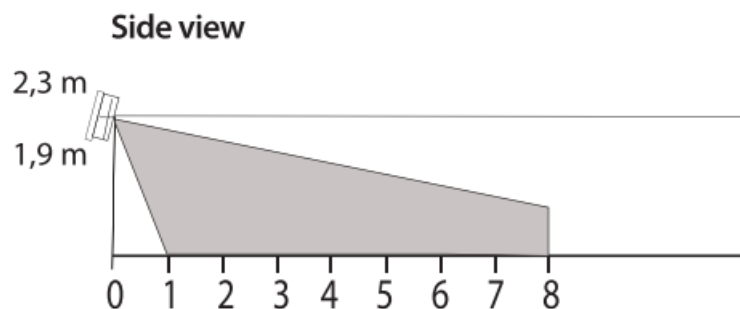
INSTALLATION

1. Please choose the installation location on the wall " for this see the following section: installation position and notes". Secure the holder with screws or adhesive tape.
2. Remove the insulating film from the battery at the back of the detector.
3. Mount the main body on the support.



INSTALLATION POSITION AND NOTES:

• Detection zone



The detection of pets can vary according to the ambient temperature, the body shape of the animal, the fitting height of the sensor ... In most cases, we have measured that an animal on the ground of less than 60 cm high and less than 25 kg is not detected within 8 m of the detector.

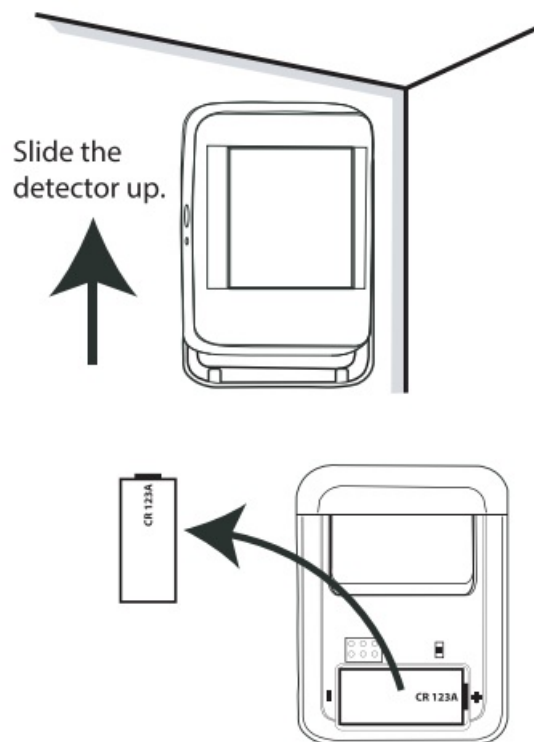
SPECIFICATION

- **Detection angle:** 80 degrees
- **Detection distance:** 8 meters
- **Pet immune:** 25 kg
- **Mounting height:** 1.9 m & 2.3 m
- **Maximum radio transmission:** 20 dBm
- **Frequency band:** 2405 – 2480 MHz
- **Battery life:** 3 years / 20 detections / day
- **Anti-Tamper:** YES
- **Operating temperature:** 0°C = 40°C
- **Operating humidity:** Up to 85% non-condensing
- **Storage temperature:** -20°C ~ 60°C
- **Sensing Technology:** Infrared

SAFETY WARNINGS

- If you need to clean the product, use a soft cloth.
- This product should only be used indoors.
- Remove the battery and keep it in a safe place if you do not use this product for a long period of time.
- Do not ingest the battery, risk of chemical burn.
- This product contains a lithium battery.
- If the battery is swallowed, it can cause severe internal burns in as little as 2 hours and can lead to death.
- Keep new and used batteries out of the reach of children.
- If the battery compartment does not close properly, stop using the product.
- If you suspect that batteries may have been swallowed or placed inside the body, seek medical attention immediately.
- Danger of explosion if battery is placed incorrectly.
- Replace the battery only with a battery of the same type. type or equivalent.
- The battery must not be exposed to excessive heat such as sunshine, fire or the like.
- Avoid installation near air conditioners, fans, refrigerators, ovens, or other places where the temperature changes rapidly.
- In order not to affect the detection performance, there should be no objects in front of the lens.
- Any material between the product and the ENKI box reduces the operating distance (mainly: reinforced concrete wall, concrete wall, metal surfaces). Take this into account when defining the positioning of your sensor.

BATTERY REPLACEMENT



Disposal

Electrical products must not be disposed of with domestic waste. They must be taken to a communal collecting point for environmentally friendly disposal in accordance with local regulations. Contact your local authorities or stockist for advice on recycling. The packaging material is recyclable. Dispose of the packaging in an environmentally friendly manner and make it available for the recyclable material collection service. Don't throw batteries or out of order products with the household waste (garbage). The dangerous substances that they are likely to include may harm health or the environment. Make your retailer take back these products or use the selective collection of garbage proposed by your town.

EU Declaration of conformity

EU Declaration of conformity

Product Model

82428878/82438038

Name and address of the manufacturer or his authorised representative

ADEO Services, 135 Rue Sadi Carnot - CS 00001 59790 RONCHIN - France

This declaration of conformity is issued under the sole responsibility of the manufacturer

Object of the declaration

Product Type - Description

SMART INDOOR PET-IMMUNE MOTION SENSOR LEXMAN

Product Reference

**82428878/82438038 - EAN Code: 3276007060898/3276007065749
Industrial Type Design Reference: LDSENK10/LDSENK18**

Product Brand

LEXMAN

Serial number coding or batch number

**SN SSSSSS XX DDMMYY nn PPPPPP (SN: Serial No., SSSSSS : Supplier code,
XX : Factory ID, DDMMYY: Production date, nn: number of version of
product, PPPPPP : The last 6 numbers of PO number)**

The object of the declaration described above is in conformity with the relevant Union harmonization legislation]

References to the relevant harmonised standards used or references to the specifications in relation to which conformity is declared]

When applicable, the name and number of notified body number

2014_53_EU_RED
radio equipment

**1. Health and Safety (Article 3.1(a) of the RE Directive)
EN 62368-1 2014+A11:2017
EN 62311:2008
EN 50665:2017
2. Electromagnetic compatibility (Article 3.1 (b) of the RE Directive)
EN 301 489-1 V2.2.3 (2019-11)
Draft EN 301 489-17 V3.2.2 (2019-12)
3. Radio frequency spectrum usage (Article 3.2 of the RE Directive)
EN 300 328 V2.2.2 (2019-07)**

2011_65_EU_RoHS
Restriction of hazardous substances in electrical products

**2015/863/EU in RoHS section
IEC 62321-3-1:2013
IEC 62321-4:2013/AMD1:2017
IEC 62321-5:2013
IEC 62321-6:2015
IEC 62321-7-1:2015
IEC 62321-7-2:2017
IEC 62321-8:2017**




Signed for and on behalf of

**Eric LEMOINE
International Project Quality Leader**

Place and date of issue

**Ronchin
15/09/2020**



	Indoor use only
	Alternative Current (AC)
	Direct Current (DC)



[Lexman LDSENK18 Wireless Smart Motion Sensor](#) [pdf] Instruction Manual
LDSENK18 Wireless Smart Motion Sensor, LDSENK18, Wireless Smart Motion Sensor, Smart Motion Sensor, Motion Sensor, Sensor

References

- [User Manual](#)