



Levven GPC20 20 AMP OnOff Relay Wireless Controller Installation Guide

[Home](#) » [Levven](#) » Levven GPC20 20 AMP OnOff Relay Wireless Controller Installation Guide 

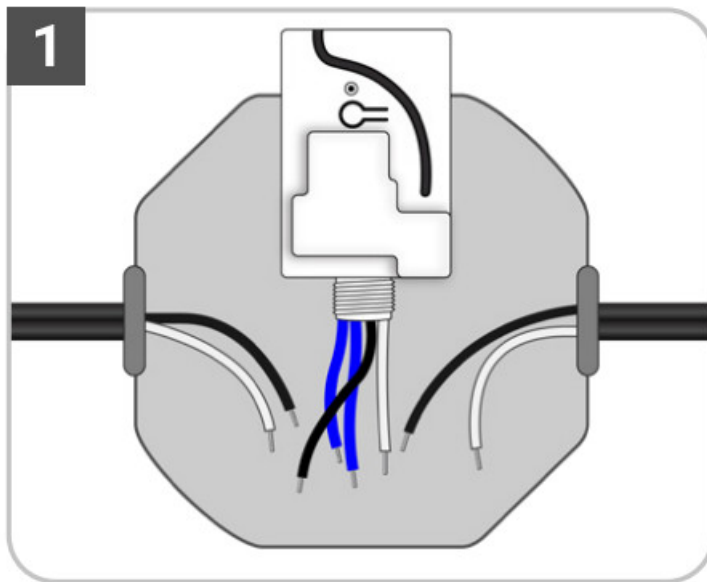


GPC20 20 AMP OnOff Relay Wireless Controller Installation Guide

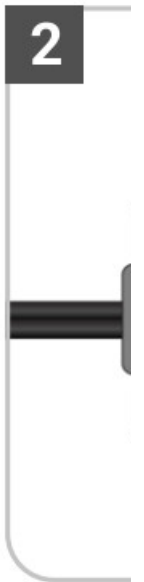
Installation Guide

- TO AVOID FIRE, SHOCK, OR DEATH: TURN OFF POWER at a circuit breaker or fuse and verify that power is off before installing a Levven product.
- Install and/or use Levven products in accordance with local electrical codes and regulations.
- Leven power controllers are to be mounted to listed electrical junction boxes of the suitable size to satisfy the electrical code in your area. We recommend using plastic junction boxes for best performance or if that is not possible, ensuring the power controller antenna is sticking out of a metal junction box. This recommendation does not apply to switches.
- If you are unsure about any of these instructions, consult a qualified electrician.

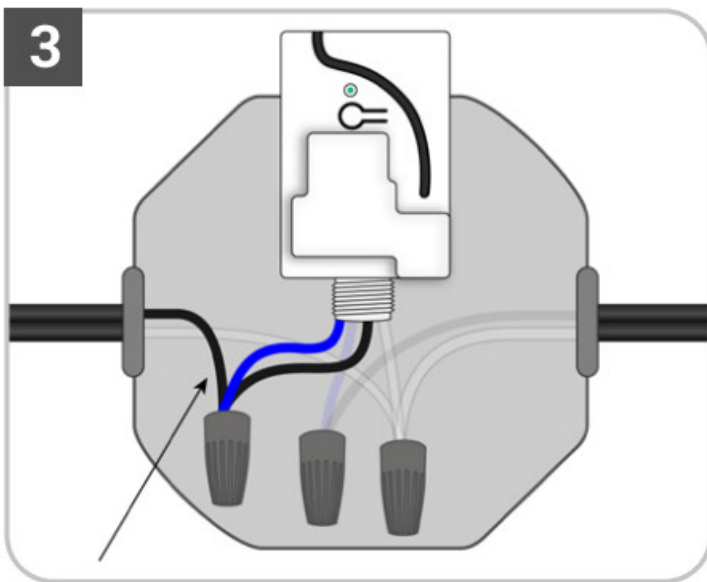
Wiring



Power controllers are to be mounted in junction boxes of suitable size to satisfy the local electrical code.



Connect the white wire to the neutral.



Connect the black power wire to the black wire of the power controller and to one of the controller's blue dry contact wires.



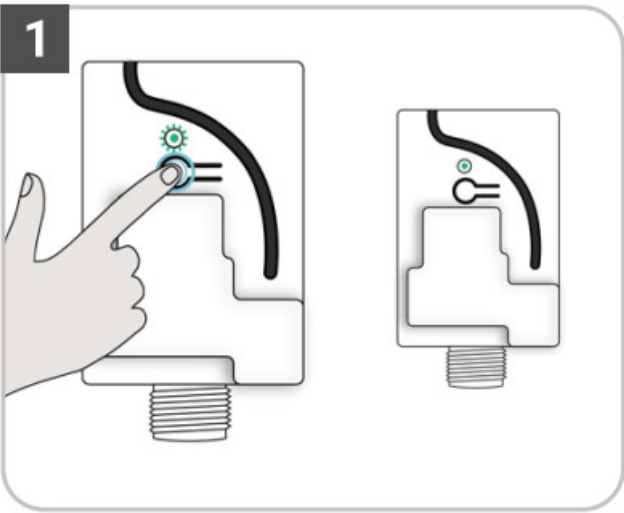
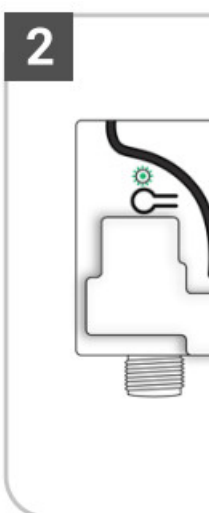
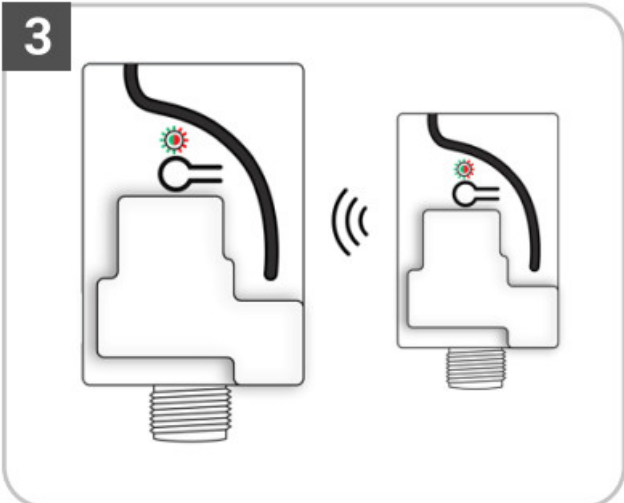
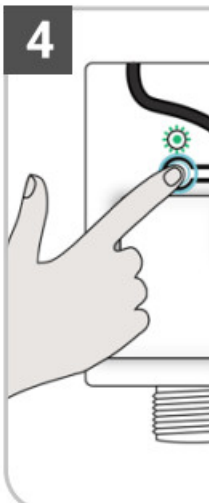
Connect the black power wire to the black wire of the power controller and to one of the controller's blue dry contact wires.

Contents

- [1 Grouping](#)
- [2 Pairing](#)
- [3 Specifications](#)
- [4 Documents / Resources](#)
- [5 Related Posts](#)

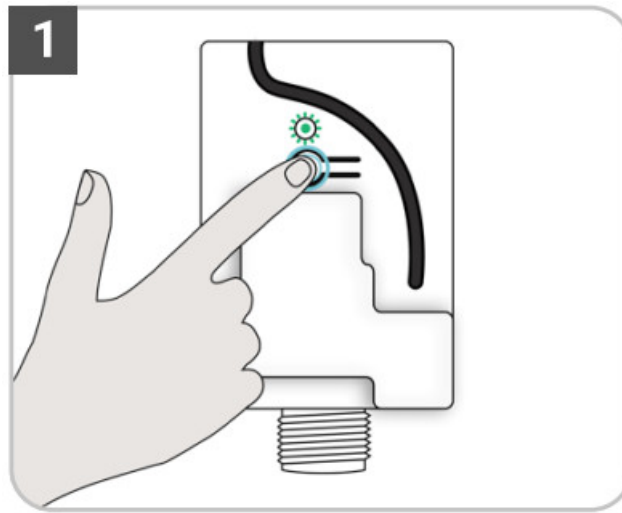
Grouping

Grouping controllers together permits one switch to operate multiple controllers or add Levven Q to access controllers from a mobile device. Only controllers with no previously saved group or pairing can join a group. NOTE: If there is no grouping request received within 60 seconds, the controller will quit the grouping procedure.

	
<p>Press and release the pair button on the first controller to initiate grouping. This controller's LED will blink green.</p>	<p>Press and release the pair button on the second controller. This controller's LED will blink green.</p>
	
<p>Both LED's on each controller will start blinking red and green to confirm a signal is received.</p>	<p>Press and release the pair button on the second controller. The LEDs will flash green 3 times to confirm the pairing.</p>

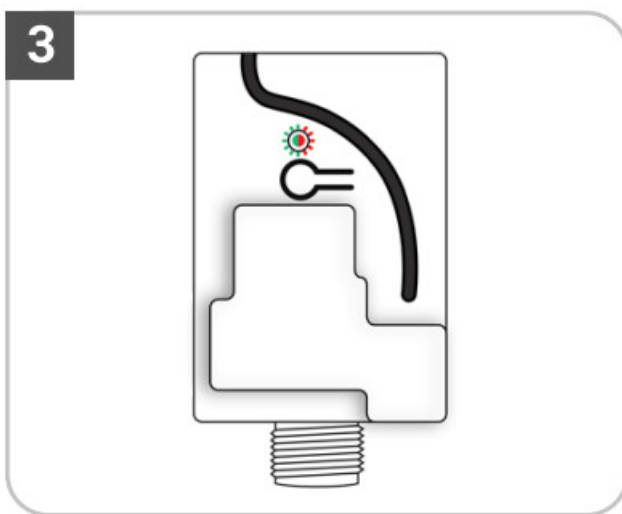
Pairing

Pairing a switch to a controller establishes a connection to send on, off and dim commands. NOTE: If there is no pairing request received within 60 seconds, the controller will quit the pairing procedure.



Press and release the pair button on the controller to initiate pairing. This controller's LED will blink green.

Squeeze



The LED on the controller will start blinking red and green to confirm a signal is received.

Press and
hold its LED

If pairing is unsuccessful, the LED will flash red 3 times

Please restart from Step 7

For customer support or inquiries visit levven.com/help or call 1 (844)-553-8836

Specifications

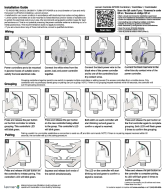
Input	Paired Switches	Wireless range
85-277VAC, 0.1-20A, 50/60Hz	Up to 10 Switches	Up to 75 m / 250 ft
Radio frequency	Encryption	Color
900 MHz band	128-bit	Blue
Operating temperature	Enclosure rating	Longevity
-40C to 50C	Indoor use only	65+ years at 15 operations per day



Intertek

Levven Controls GPC20 controller / controleur / controlador
Certified to/ Certifi~ ~ / Certificado para CSA Std. C22.2 #14
Conforms to/ Conforme ~/ De acuerdo a UL 244A & 508
FCC ID: 2ADH9 G2CF, IC ID: 12453A-G2CF
C/USETLListed4010961

Documents / Resources



[Levven GPC20 20 AMP OnOff Relay Wireless Controller](#) [pdf] Installation Guide
GPC20, 20 AMP OnOff Relay Wireless Controller, OnOff Relay Wireless Controller, Relay Wire
less Controller, Wireless Controller, GPC20, Controller

Manuals+.