

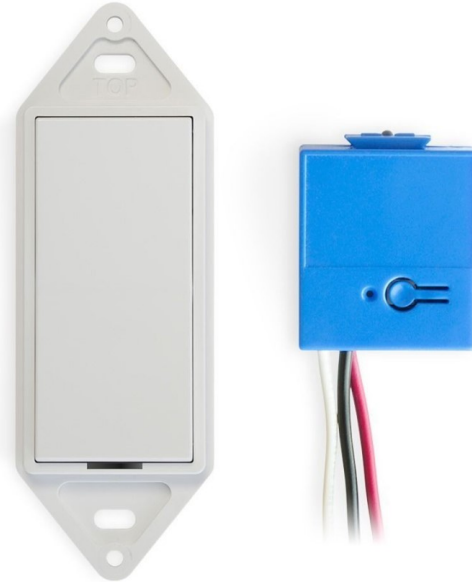
Levven 1-GPSW Controls GPSW Switch Installation Guide

[Home](#) » [Levven](#) » Levven 1-GPSW Controls GPSW Switch Installation Guide 

Contents

- [1 Levven 1-GPSW Controls GPSW Switch Installation Guide](#)
- [2 Installation Guide](#)
- [3 Scan the QR code if you / Scannez le code QR si / Escanea el código QR si:](#)
- [4 Pairing](#)
- [5 confirm pairing.](#)
- [6 Mounting Switches](#)
- [7 Product Specifications](#)
- [8 Battery Replacement](#)
- [9 Read More About This Manual & Download PDF:](#)
- [10 Documents / Resources](#)
- [11 Related Posts](#)

Levven 1-GPSW Controls GPSW Switch Installation Guide



Installation Guide

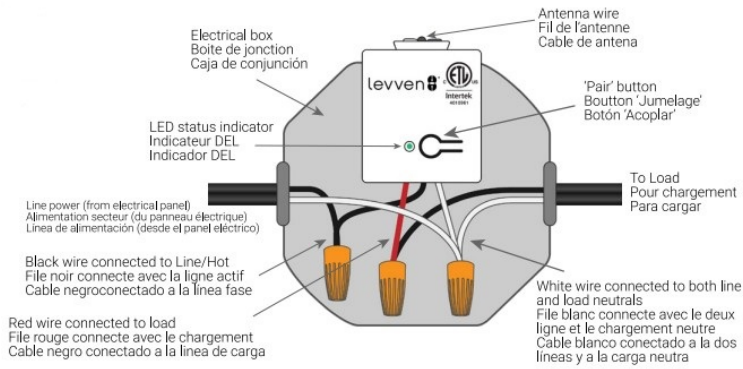
- TO AVOID FIRE, SHOCK, OR DEATH: TURN OFF POWER at a circuit breaker or fuse and verify that power is off before installing a Levven product. • Install and/or use Levven products in accordance with local electrical codes and regulations. £51126?
- Levven power controllers are to be mounted to listed electrical junction boxes of suitable size to satisfy the electrical code in your area. We recommend using plastic junction boxes for best performance or if that is not possible, ensuring the power controller antenna is sticking out of a metal junction box. This recommendation does not apply to switches
- If you are unsure about any of these instructions, consult a qualified electrician.

Scan the QR code if you / Scannez le code QR si / Escanea el código QR si:



Levven Controls GPSW switch/ interrupteur / interruptor
FCC ID: 2ADH9-GSW, IC ID: 12453A-GSW

Diagram for wiring controller in junction box
Schéma de câblage du contrôleur dans la boîte de jonction
Diagrama del controlador de cableado en la caja de conexiones



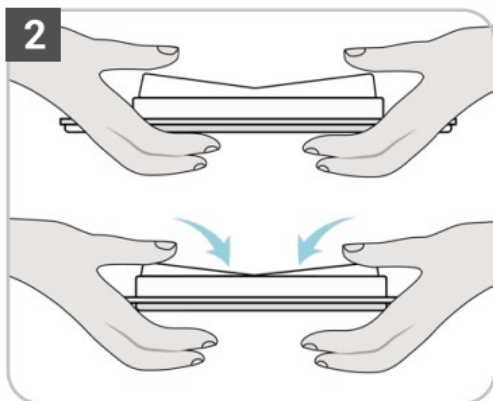
Pairing

Pairing a switch to a controller establishes a connection to send on, off, and dim commands. NOTE: If there is no pairing request received within 60 seconds, the controller will quit the pairing procedure.

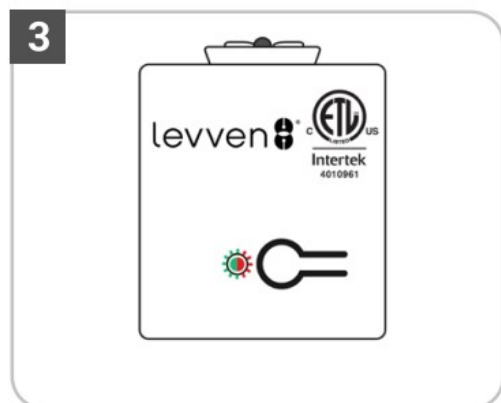
Press and release the pair button on the controller to initiate pairing. This controller's LED will blink green.



Squeeze and release both ends of the switch simultaneously.



The LED on the controller will start blinking red and green to confirm a signal is received.



Press and release the pair button on the controller to complete pairing. Its LED will flash green 3 times to



confirm pairing.

If pairing is unsuccessful, the LED will flash red 3 times. Please restart from Step 1.

Operation and Care of Levven Switches

- a. Press and release the top of the rocker to transmit an ON signal to the power controller(s). Switch LED flashes once to confirm operation.
- b. Press and release the bottom of the rocker to transmit an OFF signal to the power controller(s). Switch LED flashes twice to confirm operation.
- c. To adjust the brightness, turn the light on then press and hold the top of the rocker to brighten or the bottom of the rocker to dim. Release the rocker when desired light level is reached.
- d. When the battery power is less than 10%, the LED will flash 20 times in regular intervals.
- e. Clean switches with a dampened cloth. Do not use chemical cleaners of any type as they will damage the switch and void the warranty.
- f. To replace the battery inside the switch, remove the rocker by pressing and holding the bottom of the rocker into the switch. Pry the top of the rocker out of the switch to remove the rocker. Push the battery out of the holder from the top of the holder and replace with a new battery with the positive(+) symbol facing out. Replace the rocker by pressing the rocker hinge into the switch body.
- g. To avoid damage to the switch and voiding the warranty, use only a CR2032 3V 225 mAh lithium coin cell battery.
- h. Recycle batteries as per government regulations. See [epa.gov/recycle/ how-do-i-recycle-common-recyclables#batteries](http://epa.gov/recycle/how-do-i-recycle-common-recyclables#batteries)
- i. Place leaking batteries into a plastic bag before recycling. Avoid contact with the substance at all times. Clean out the battery holder with a dry cotton swab. In case of contact, wash your hands thoroughly with soap and water.

Mounting Switches

- Levven switches can be secured to any surface.
- Wall anchors and screws are provided to mount switches onto walls.
- GPSxx switch models are only compatible with decorator-style wall plates. PDKxx and CSQxx are only compatible with Levven Designer series wall plates.

Product Specifications

Purpose of control	Visual indicator	Wireless range	Battery / Battery Life
Coin-cell battery-operated switch transmitter (operating control - non-safety related)	LED status & low battery	Up to 75 m / 250 ft	CR2032 3V 225 mAh lithium, 10+ years (15 on/off operations per day)
Radio frequency	Encryption	Color	Construction of control
900 MHz band	128-bit	White (W), Light Almond (LA), Brown (BR), Black (BL)	Independently Mounted Type 1 Action
Cover / trim wall plate	Operating temp	Impulse voltage	Environment
Decorator (standard decorator-style trim plate by others), Designer (snap-on trim plate by Levven).	-40C to 50C	71V	Pollution Degree 2

Battery Replacement

- Press and hold the bottom part of the switch rocker.
- Pry from the top of the rocker to remove it and reveal the circuit board.
- Slide out the old battery from the contact housing and insert the new battery with the positive(+) symbol facing out.
- Snap the rocker by pressing the rocker hinge into the switch body.



Read More About This Manual & Download PDF:

Documents / Resources

	<p>Levven 1-GPSW Controls GPSW Switch [pdf] Installation Guide 1-GPSW, Controls GPSW Switch, 1-GPSW Controls GPSW Switch, GPSW Switch</p>
--	--