

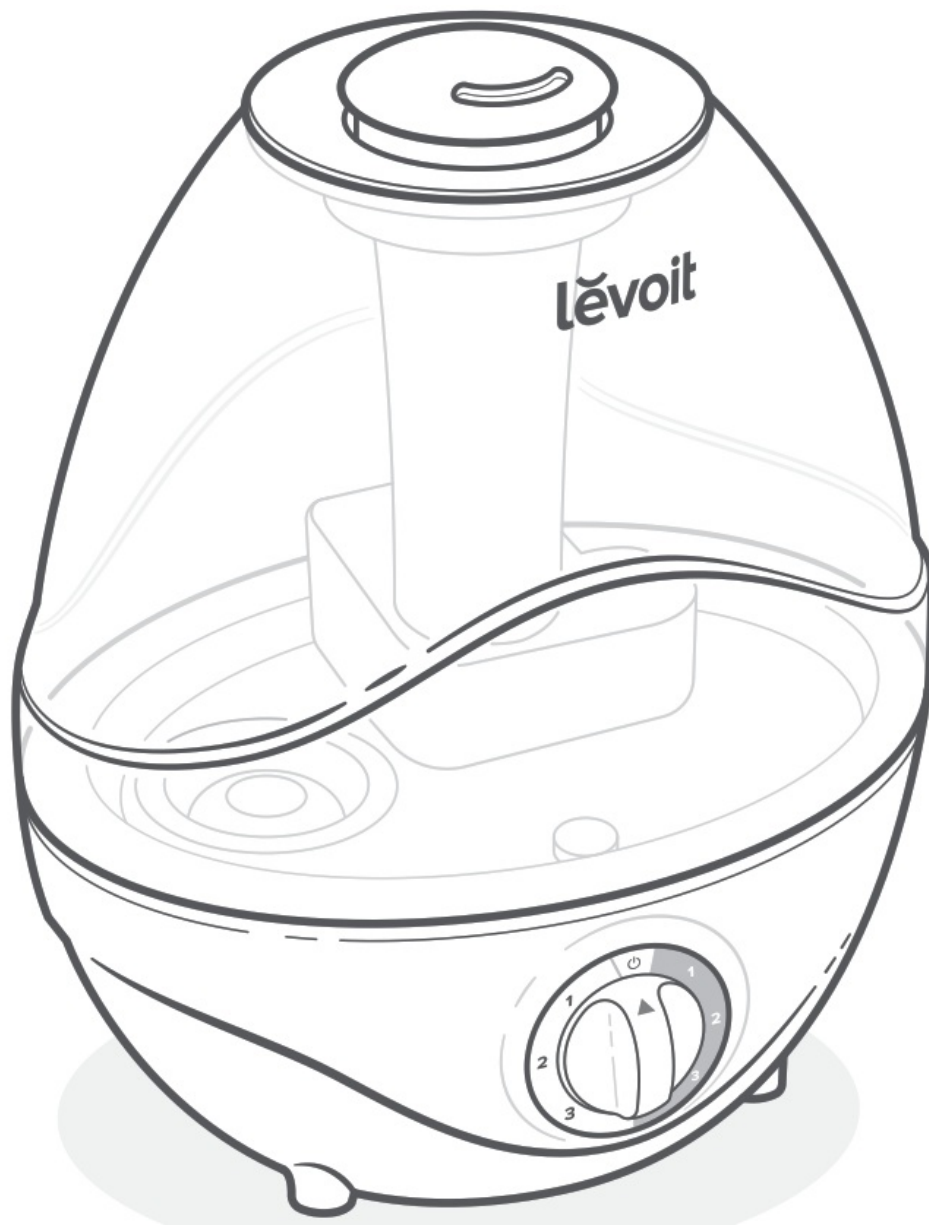


levoit Ultrasonic Cool Mist Humidifier User Manual

[Home](#) » [Levoit](#) » levoit Ultrasonic Cool Mist Humidifier User Manual 

levoit

USER MANUAL
Ultrasonic Cool Mist Humidifier
Model: Classic 100

**Questions or Concerns?**

Please contact us at support.eu@levoit.com

Thank you for purchasing the
ULTRASONIC COOL MIST HUMIDIFIER BY LEVOIT.

If you have any questions or concerns, please
reach out to us at support.eu@levoit.com.

We hope you enjoy your new humidifier!

Find Us Online

Search for @LevoitUK on social media for tips, special deals, giveaways, inspiration, and more.

Contents

- 1 Package Contents
- 2 Specifications
- 3 SAFETY INFORMATION
- 4 General Safety
- 5 Power Adapter
- 6 GETTING TO KNOW YOUR HUMIDIFIER
- 7 GETTING STARTED
 - 7.1 Filling & Refilling
- 8 USING YOUR HUMIDIFIER
- 9 IMPORTANT TIPS
- 10 CARE & MAINTENANCE
 - 10.1 Cleaning
- 11 Reassembling
- 12 TROUBLESHOOTING
- 13 WARRANTY INFORMATION
- 14 CUSTOMER SUPPORT
- 15 Documents / Resources
 - 15.1 References
- 16 Related Posts

Package Contents

- 1 x Ultrasonic Cool Mist Humidifier
- 1 x Power Adapter
- 1 x Cleaning Brush
- 1 x User Manual
- 1 x Quick Start Guide

Specifications

Rated Power	DC 24V, 24W
Water Tank Capacity	2.4 L / 0.63 gal
Max Run Time	Up to 24 hours on low mist setting Note: The humidifier may run for a longer or shorter time depending on environmental temperature and humidity.
Noise Level	≤ 30dB
Effective Range	10–27 m ² / 107–290 ft ²
Dimensions	21.7 x 17 x 26 cm / 8.5 x 6.7 x 10.2 in
Weight	1.1 kg / 2.5 lb
Adapter Rated Power	Input: AC 100–240V, 50/60Hz Output: DC 24V, 1A

SAFETY INFORMATION

To reduce the risk of fire, electric shock, or another injury, follow all instructions and safety guidelines.

General Safety

- Only use the humidifier as described in this manual.
- Place the humidifier and power adapter cord so that it will not be knocked over. Do not place near large pieces of furniture or in areas with high foot traffic.
- When not in use, turn the humidifier off and disconnect from power by removing the power adapter from the outlet.
- Do not use the humidifier in wet environments.
- Keep the humidifier out of reach from children.
- To avoid risk of electric shock, always unplug the humidifier from the power outlet before cleaning it or detaching the water tank from the base.
- Always make sure the humidifier is placed on a hard, flat, level surface before operation.
- Do not place the humidifier near sources of heat, such as stovetops, ovens, or radiators.
- Do not place the humidifier directly on floors, carpets, or rugs. Only place on water-resistant surfaces.
- Do not place foreign objects into the humidifier base or water tank.

- Do not use power adapters that are not recommended by Levoit for the humidifier.
- Do not cover the nozzle while the humidifier is on. Doing so may damage the humidifier.
- Do not allow water or other liquids into the air outlet.
- Remove the water tank from the base before moving the humidifier.
- Do not immerse the humidifier base or power adapter in water.
- Always allow the humidifier to completely cool before cleaning.
- Do not use detergents to clean the humidifier. Only use distilled white vinegar.
- If the humidifier is damaged or is not functioning properly, stop using it and contact Customer Support immediately (see page 15).
- Not for commercial use. Household use only.

Power Adapter

- Do not handle the power adapter with wet hands. Keep the power adapter away from liquids.

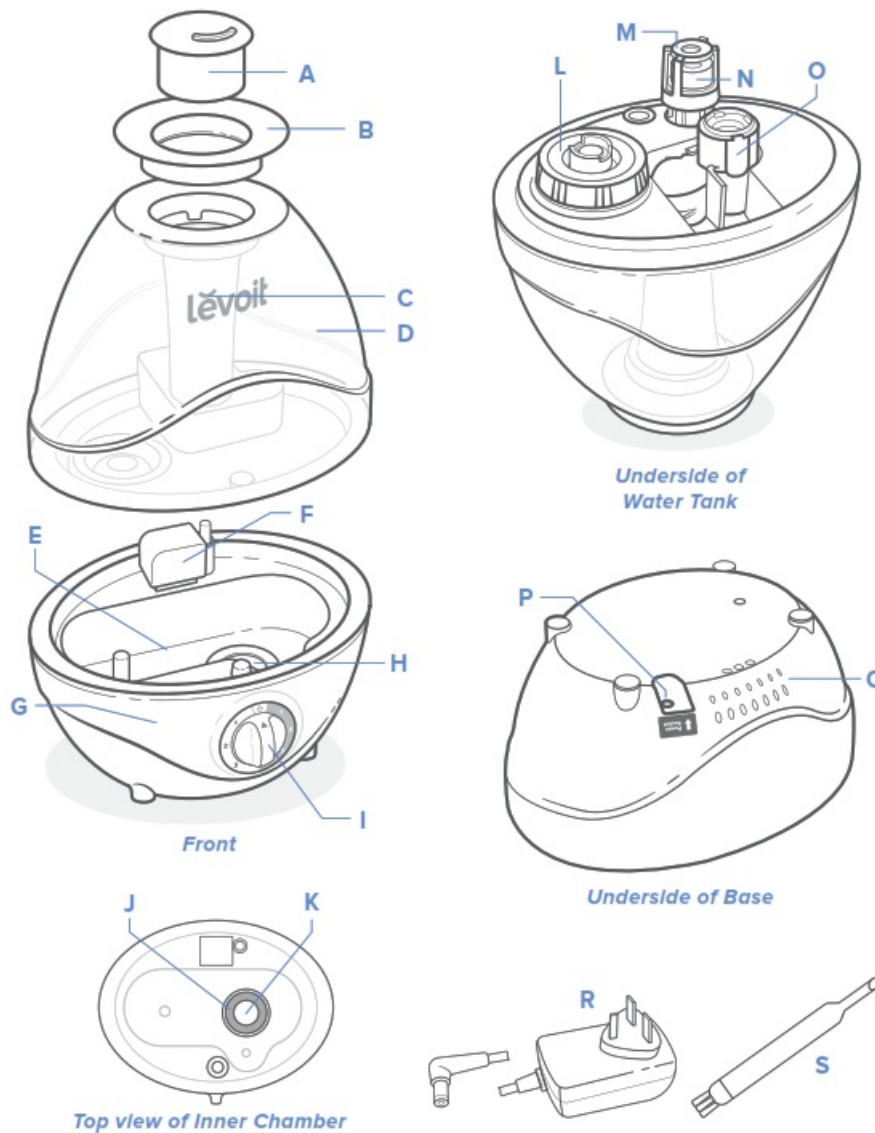
Caution: Risk of Leaks and Electric Shock

Do not add essential oils, water treatment liquids, or third-party water filters into the humidifier (including the water tank or base chamber). This will damage the humidifier and cause leaks.

READ AND SAVE THESE INSTRUCTIONS

GETTING TO KNOW YOUR HUMIDIFIER

- A. Nozzle
- B. Nozzle Cap
- C. Mist Tube
- D. Water Tank
- E. Base Chamber
- F. Air Outlet
- G. Base
- H. Night Light
- I. Mist Level Dial
- J. Insulation Ring
- K. Transducer
- L. Water Tank Cap
- M. Float Housing
- N. Float
- O. Noise Silencer
- P. Power Socket
- Q. Air Inlet
- R. Power Adapter
- S. Cleaning Brush



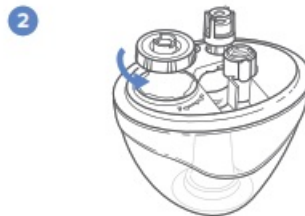
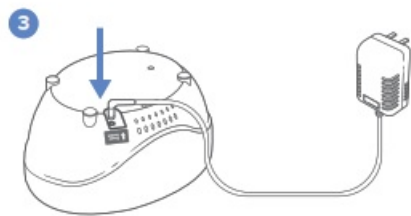
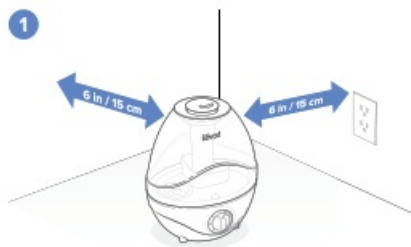
GETTING STARTED

1. Remove all packaging. Choose a hard, flat location for the humidifier at least 15 cm / 6 in away from any walls. The surface must be water-resistant.
2. Make sure the mist nozzle is directed away from walls, furniture, bedding, and appliances.
3. Connect the power adapter to the base.

Filling & Refilling

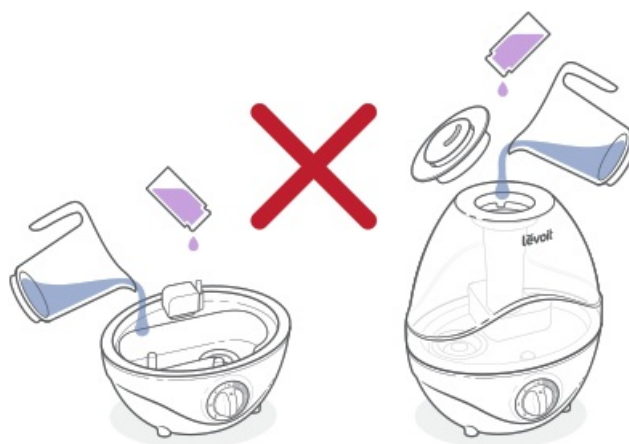
1. Remove the nozzle and nozzle cap from the water tank.
2. Flip over the water tank and remove the water tank cap by twisting it anticlockwise.
3. Fill the tank with cool water. Do not fill with warm or hot water.

Note: We recommend using purified or distilled water in the humidifier.

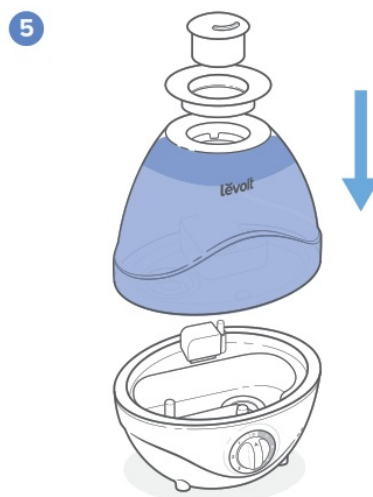
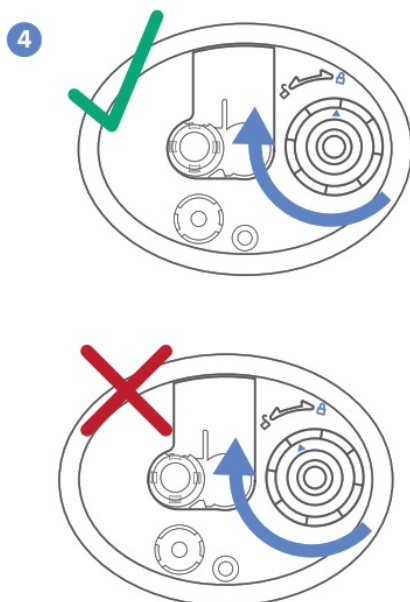


CAUTION


- Do not add water directly into the base chamber.
- Do not add water through the mist tube.
- Do not add essential oils into the humidifier.




4. Replace the water tank cap by firmly twisting it back in place, aligning the arrow with the lock.
5. Place the tank properly on the base. Replace the nozzle and nozzle cap onto the water tank.



USING YOUR HUMIDIFIER

Note: If there is no water in the tank, the humidifier will not turn on and  will light up red. Fill the water tank (see Filling & Refilling, page 6).

1. Plug in the adapter.
2. Turn the dial to the desired setting. [Figure 3.1]
3. Rotate the nozzle to adjust the direction of the mist.
4. When your room has reached a comfortable humidity level, turn your humidifier to a lower setting or turn it off. A comfortable humidity level is above 40% and below 60%.
5. Turn the dial to  to turn the humidifier off.

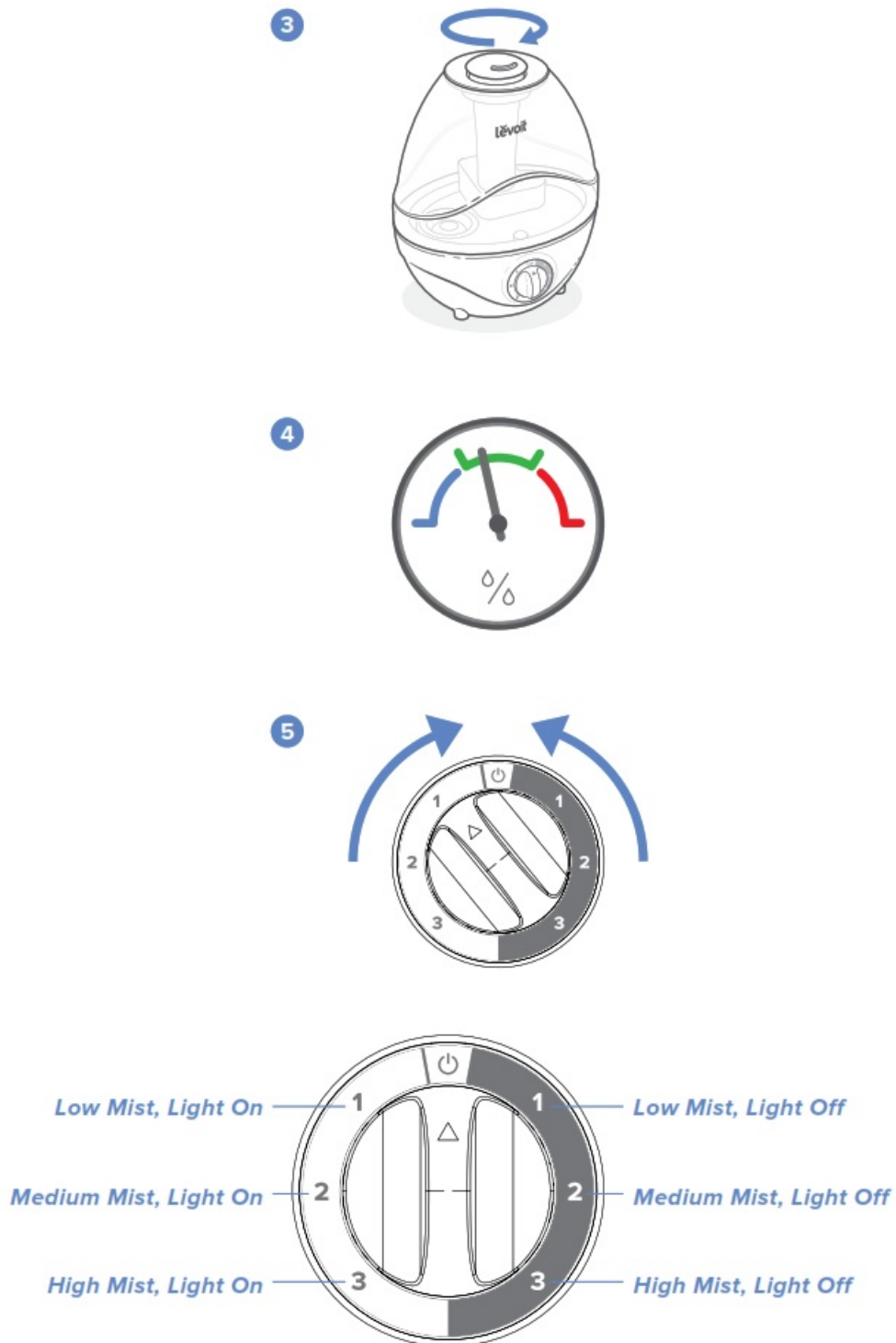


Figure 3.1

IMPORTANT TIPS

- Never pour water directly into the base chamber. [Figure 1.1] Only add water to the water tank. The humidifier will automatically release the correct amount of water into the base chamber.
- Avoid moving or shaking the humidifier. [Figure 1.2] This may cause the water tank to release too much water into the base chamber.
- Before moving the humidifier, turn it off, unplug it, and remove the water tank.
- If your humidifier doesn't produce mist correctly, check the max water line [Figure 1.3] to see if there is too much water in the base chamber. Pour out any extra water if water is over the max line.

Note: The max water line is only for this purpose. Do not pour water into the base.



Figure 1.1



Figure 1.2

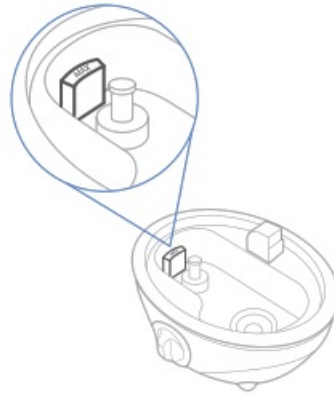


Figure 1.3

CARE & MAINTENANCE

Note:

- All maintenance should be done on a water-resistant surface, such as a kitchen counter.
- Change the water daily to avoid bacteria growth.
- Use a tissue or cloth to clean the nozzle regularly.
- If not using the humidifier for 1 week or longer, do not leave water inside. Clean and dry the humidifier instead.

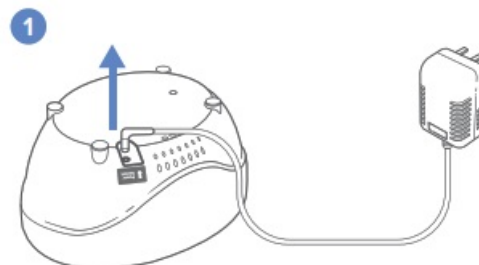
Cleaning

You should clean your humidifier every week, and when you're ready to store it.

Note:

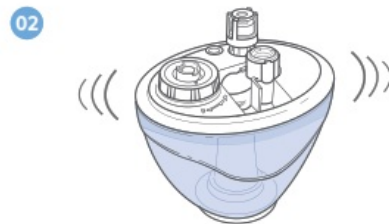
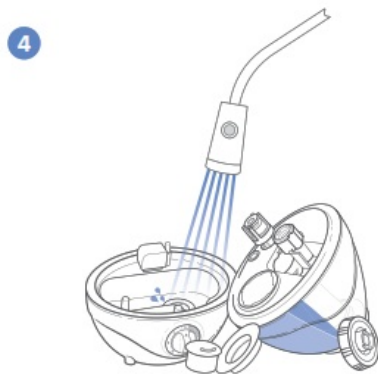
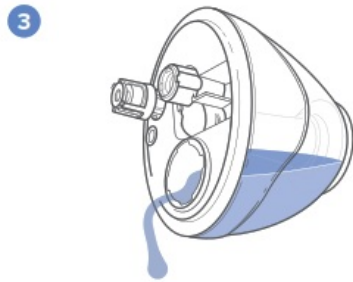
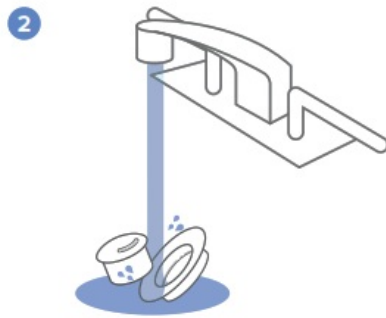
- Never immerse the base in water or liquid. Do not place any part of the humidifier in a dishwasher.
- Do not use detergents to clean the humidifier.

1. Unplug the humidifier and remove the power adapter from the base.



2. Remove and rinse the nozzle and nozzle cap.
3. Remove the water tank from the base. Pour out all water from the tank and base.
4. Rinse the tank and the base chamber with room temperature water.
5. To descale the humidifier:
 01. Fill the water tank with 237 mL / 2 US cups of distilled white vinegar.
 02. Replace the tank cap and swish the vinegar around in the tank.
 03. Place the tank properly on the base. Vinegar will drain into the base chamber and loosen scale (mineral

buildup) in the tank and in the base (including the transducer and float).



04. Soak for 15–20 minutes.

05. Remove the tank and pour out any vinegar.

06. Flip the tank over and remove the tank cap and noise silencer.

07. Place the tank cap and noise silencer in a small container (or the base chamber). Fill with enough vinegar to cover them. Soak for 15–20 minutes.

08. Use a soft cloth and the included cleaning brush to remove scale.

09. Rinse all parts until any vinegar smell is completely gone.

6. Dry all parts with a cloth. Make sure all parts are completely dry.

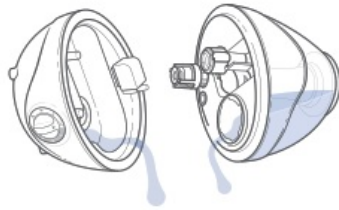
04



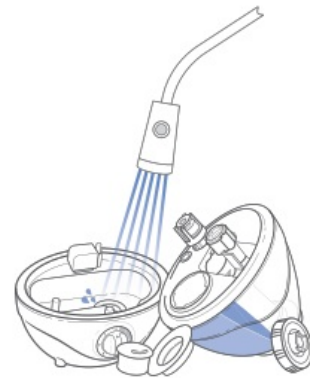
08



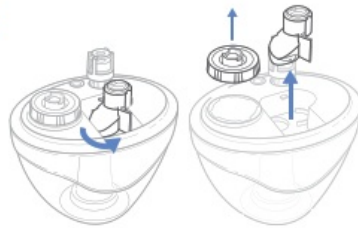
05



09



06

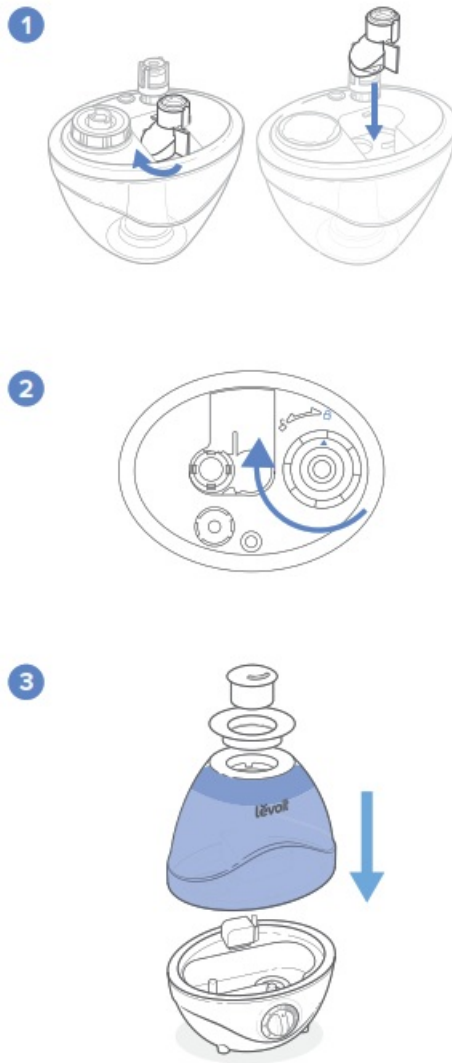


07



Reassembling

1. Flip the water tank over and replace the noise silencer on the tank.
2. Refill the tank, if necessary. Replace the water tank cap by firmly twisting it back in place, aligning the arrow with the lock.
3. Place the tank properly on the base. Replace the nozzle and nozzle cap onto the water tank.




Storing

Follow the cleaning instructions and allow all parts to dry completely before storing. Store in a cool, dry location.

TROUBLESHOOTING

Problem	Possible Solution
Humidifier doesn't turn on.	Make sure the power adapter is correctly plugged into a working outlet.
	Make sure the power adapter is correctly plugged into the humidifier base.
	Turn the mist level dial to a higher setting.
	Fill the water tank.

Little or no mist comes out.	There may be too much water in the base chamber. Empty the base chamber. Refill the water tank (not the base chamber) and place the water tank properly onto the base.
	Make sure the air inlet on the bottom of the base is not blocked. The humidifier should not be set on carpet or other surfaces that may block the air inlet.
	Make sure the nozzle is not blocked or clogged.
	Make sure the humidifier is on a level surface.
	The water temperature may be too low. Turn the mist level dial to the highest setting and let the humidifier run for a while, then adjust to the desired setting.
	If the water tank or base was washed with detergent, rinse thoroughly with clean water to remove any detergent.
Humidifier uses water too quickly.	The humidifier uses up water based on the environmental temperature and humidity. If your environment is cold and/or dry, the humidifier will run out of water faster.
Humidifier produces an unusual smell.	Clean the water tank and base chamber (see Care & Maintenance, page 9).
Water leaks from the humidifier.	Tighten the water tank cap.
	Check the water tank for leaks. If there are leaks, contact Customer Support (see page 15).
Condensation forms around humidifiers or windows.	Humidity may be too high. Turn down the mist level, turn off the humidifier, or open the door to the room.

Problem	Possible Solution
Mist is leaking from the base.	Empty the base chamber. Refill the water tank (not the base chamber) and place the water tank properly onto the base.
White dust appears around the humidifier.	Use purified or distilled water to fill the humidifier. Avoid using water with high mineral content.
	Clean the humidifier (see Care & Maintenance, page 9).
 is red.	Fill the water tank.
	Place the water tank properly on the base.

If your problem is not listed, please contact Customer Support (see page 15).

WARRANTY INFORMATION

Terms & Policy

Arovast Corporation warrants all products to be of the highest quality in material, craftsmanship, and service for 2 years, effective from the date of purchase to the end of the warranty period. Warranty lengths may vary between product categories.

If you have any questions or concerns about your new product, please contact our helpful Customer Support Team.

CUSTOMER SUPPORT

Arovast Corporation

1202 N. Miller St., Suite A Anaheim, CA 92806 USA

Email: support.eu@levoit.com

* Please include your order ID when contacting Customer Support.


levoit

levoit.com

Connect with us @LevoitUK



Documents / Resources

 <p>Levoit CLASSIC 100 Ultrasonic Cool Mist Humidifier Model Classic 100</p> <p>Available in Germany www.levoit.com</p>	<p>levoit Ultrasonic Cool Mist Humidifier [pdf] User Manual Ultrasonic Cool Mist Humidifier, Classic 100</p>
--	--

References

- [🌐 Levoit - Air Purifiers, Humidifiers, Diffusers, Vacuums & More](#)