



levoit LAP-C161-WEU Core Mini True HEPA Air Purifier User Manual

[Home](#) » [Levoit](#) » levoit LAP-C161-WEU Core Mini True HEPA Air Purifier User Manual 

Contents

- [1 LAP-C161-WEU Core Mini True HEPA Air Purifier](#)
- [2 Product Information – Levoit Core Mini True HEPA Air Purifier](#)
- [3 Product Usage Instructions](#)
- [4 Specifications](#)
- [5 SAFETY INFORMATION](#)
- [6 GETTING STARTED](#)
- [7 CARE & MAINTENANCE](#)
- [8 TROUBLESHOOTING](#)
- [9 Documents / Resources](#)
 - [9.1 References](#)
- [10 Related Posts](#)

levoit®

LAP-C161-WEU Core Mini True HEPA Air Purifier



Product Information – Levoit Core Mini True HEPA Air Purifier

Model: LAP-C161-WEU

The Levoit Core Mini True HEPA Air Purifier is a compact and efficient air purifier designed to improve air quality in your home or office. It uses a 3-stage H13 True HEPA filter to capture and remove airborne pollutants such as dust, pollen, pet dander, smoke, and mold spores. The purifier operates quietly and is suitable for rooms up to an ideal size.

Package Contents:

- Levoit Core Mini True HEPA Air Purifier (Model: LAP-C161-WEU)
- 3-Stage H13 True HEPA Filter
- AC Power Adapter

Specifications:

- Power Supply: AC power adapter
- Rated Power: Not specified
- Ideal Room Size: Suitable for small to medium-sized rooms
- Operating Conditions: Not specified
- Noise Level: Not specified
- Air Purifier Dimensions: Not specified
- Air Purifier Weight: 1.0 kg / 2.2 lb
- Power Adapter: Included

Safety Information:

To ensure safe usage of the Levoit Core Mini True HEPA Air Purifier, please follow these guidelines:

- Read and save the instructions provided in the user manual.
- Follow all safety guidelines and instructions to reduce the risk of fire, electric shock, or other injuries.
- Ensure proper handling of the power adapter and cord.
- The air purifier complies with all standards regarding electromagnetic fields (EMF) and is safe to use when handled properly.
- Dispose of the product responsibly by delivering it to an appropriate collection facility for recycling. Proper disposal and recycling help protect natural resources, human health, and the environment.
- The product is RoHS compliant and meets the restrictions on the use of certain hazardous substances in electrical and electronic equipment.

Product Usage Instructions

Getting to Know Your Air Purifier:

The Levoit Core Mini True HEPA Air Purifier features the following components:

- Check Filter Indicator
- Fan Speed Indicators

- Control Button
- Air Outlet
- Air Inlets
- Aroma Pad
- Aroma Box
- Air Purifier Bottom
- Air Purifier Top
- AC Power Adapter Input
- 3-Stage H13 True HEPA Filter
- AC Power Adapter

Getting Started:

Before using the Levoit Core Mini True HEPA Air Purifier, follow these steps:

1. Remove all packaging, including any tape on the aroma box.
2. Rotate the top half of the air purifier anticlockwise and remove it from the bottom half.
3. Remove the filter and AC power adapter from inside the air purifier. Remove all plastic packaging from the filter.
Place the filter back into the air purifier.
4. Place the top half of the air purifier directly back onto the bottom half of the air purifier. Rotate clockwise to secure both halves in place.

Package Contents

- 1 × Core Mini True HEPA Air Purifier
- 1 × 3-Stage H13 True HEPA Filter (Pre-Installed)
- 1 × Aroma Pad (Pre-Installed)
- 1 × AC Power Adapter
- 1 × User Manual

Specifications

Power Supply	12V 1A
Rated Power	7W
Ideal Room Size	16 m ² / 169 ft ² Note: <ul style="list-style-type: none"> Effective for larger rooms, but purification will take longer. Ideal Room Size is based on 2 air changes per hour (ACH).
Operating Conditions	Temperature: <ul style="list-style-type: none"> 10°–40°C / 14°–104°F
	Humidity: < 85% RH
Noise Level	27–44dB
Air Purifier Dimensions	16.4 × 16.4 × 26.4 cm / 6.5 × 6.5 × 10.4 in
Air Purifier Weight	1.0 kg / 2.2 lb
Power Adapter	Input: 100–240V 50/60Hz
	Output: 12V 1A

READ AND SAVE THESE INSTRUCTIONS

SAFETY INFORMATION

To reduce the risk of fire, electric shock, or other injury, follow all instructions and safety guidelines.

General Safety

- Only use your air purifier as described in this manual.
- Do not use without removing the plastic wrap from the filter. The air purifier will not filter air, and may overheat, causing a fire hazard.
- Do not use the air purifier outdoors.
- Keep the air purifier away from water, and wet or damp areas. Never place in water or liquid.
- Do not use in excessively humid areas.
- Keep the air purifier away from heat sources.
- Do not use where combustible gases, vapours, metallic dust, aerosol (spray) products, or fumes from industrial oil are present.
- Keep 1.5 m / 5 ft away from where oxygen is being administered.
- Supervise children when they are near the air purifier. Do not allow children to play with the air purifier.
- Do not place anything into any opening in the air purifier.
- Do not sit on or place heavy objects on the air purifier.
- Keep the inside of the air purifier dry. To prevent moisture buildup, avoid placing in rooms with major

temperature changes or underneath air conditioners.

- Always unplug the air purifier before servicing (such as changing the filter).
- Do not add essential oils to the filter. The filter will be damaged by the oil and will eventually release an unpleasant smell. Only add essential oils (not included) to the aroma box near the top of the air purifier.
- Do not use the air purifier if it is damaged or not working correctly, or if the cord or plug is damaged. Do not try to repair it yourself. Contact Customer Support (see page 12).
- **WARNING:** To reduce the risk of fire or electric shock, do not use this air purifier with any solid-state speed controls (such as a dimmer switch).
- Children should not clean or perform maintenance on the air purifier without supervision.
- This air purifier can be used by children 8 years and older as well as persons with reduced physical, sensory, or mental capabilities or lack of experience and knowledge if they have been given supervision or instruction concerning use of the air purifier in a safe way and understand the hazards involved.
- Not for commercial use. Household use only.

Power Adapter & Cord

- Keep the air purifier near the outlet it is plugged into.
- Never place the cord near any heat source.
- Do not cover the cord with a rug, carpet, or other covering. Do not place the cord under furniture or appliances.
- Keep the cord out of areas where people walk often. Place the cord where it will not be tripped over.
- If the power adapter cord is damaged, it must be replaced by Arovast Corporation or similarly qualified persons in order to avoid an electric or fire hazard. Please contact Customer Support (page 12).

Electromagnetic Fields (EMF)

Your Levoit air purifier complies with all standards regarding electromagnetic fields (EMF). If handled properly and according to the instructions in this user manual, the appliance is safe to use based on scientific evidence available today.



This symbol means the product must not be discarded as household waste, and should be delivered to an appropriate collection facility for recycling. Proper disposal and recycling helps protect natural resources, human health and the environment.

For more information on disposal and recycling of this product, contact your local municipality, disposal service, or the shop where you bought this product.

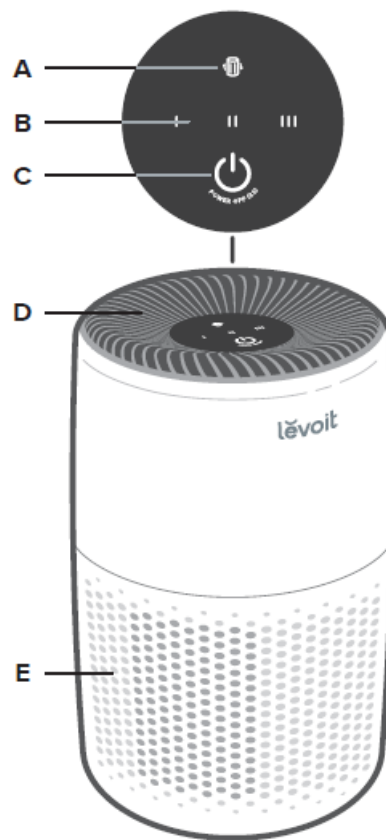
This product is RoHS compliant.

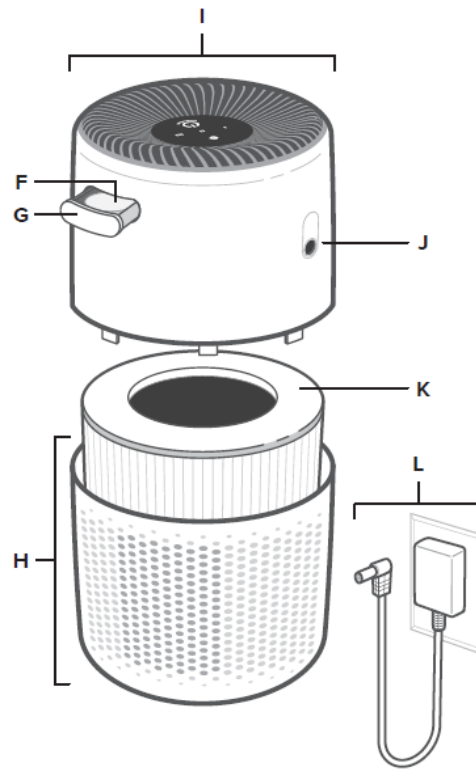
This product is in compliance with Directive 2011/65/EU, and its amendments, on the restriction of the use of certain hazardous substances in electrical and electronic equipment.

GETTING TO KNOW YOUR AIR PURIFIER

- A. Check Filter Indicator

- B. Fan Speed Indicators
- C. Control Button
- D. Air Outlet
- E. Air Inlets
- F. Aroma Pad
- G. Aroma Box
- H. Air Purifier Bottom
- I. Air Purifier Top
- J. AC Power Adapter Input
- K. 3-Stage H13 True HEPA Filter
- L. AC Power Adapter





GETTING STARTED

IMPORTANT:

- The AC power adapter comes stored inside the air purifier.
 - You must remove the plastic from the filter before using.
1. Remove all packaging, including any tape on the aroma box.
 2. Rotate the top half of the air purifier anticlockwise and remove it from the bottom half. [Figure 1.1]
 3. Remove the filter and AC power adapter from inside the air purifier. Remove all plastic packaging from the filter. Place the filter back into the air purifier. [Figure 1.2]
 - 4.

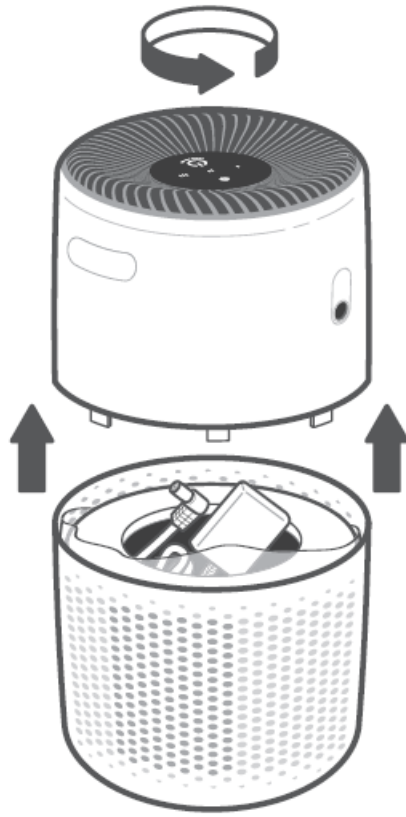


Figure 1.1

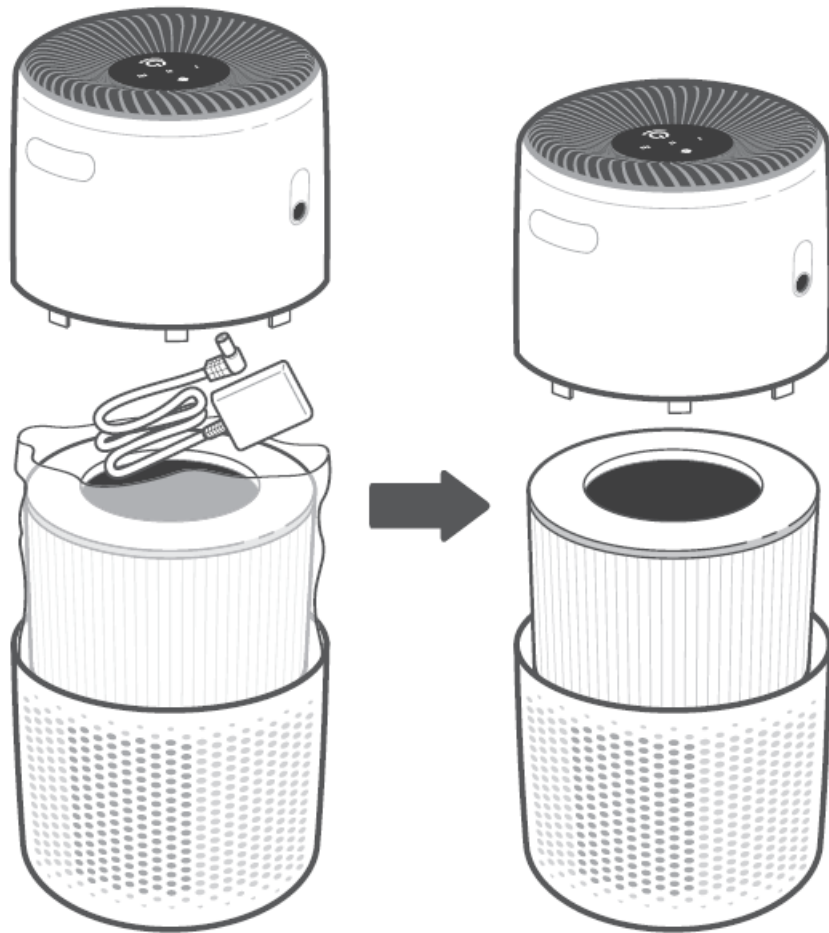


Figure 1.2

Place the top half of the air purifier directly back onto the bottom half of the air purifier. Rotate clockwise to secure both halves in place. [Figure 1.3]

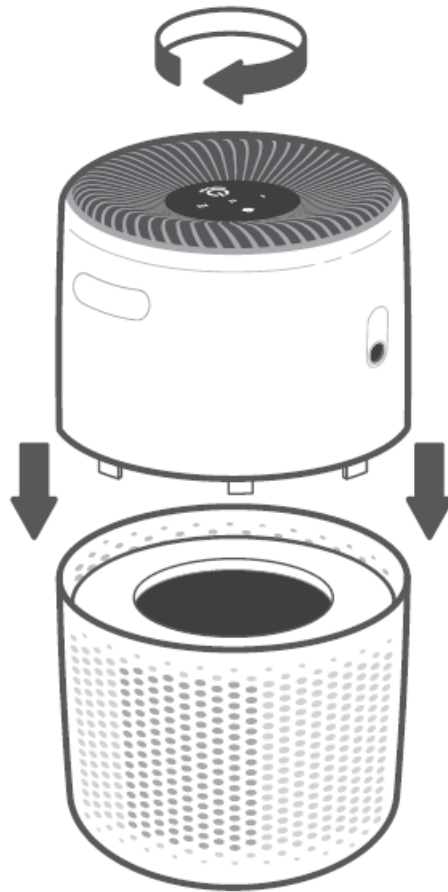


Figure 1.3

5. Connect the AC power adapter to the air purifier. Plug into an outlet.
6. To allow air to circulate freely in and out of the air purifier, there should ideally be 38 cm / 15 inches of clearance on all sides of the air purifier. [Figure 1.4]

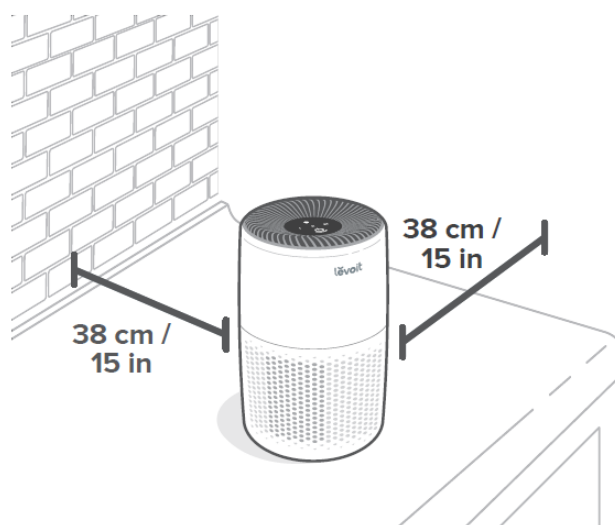


Figure 1.4

USING YOUR AIR PURIFIER

- **WARNING:** Make sure the air outlet and the air inlets are not blocked. This may cause the air purifier to

overheat and stop working.

1. Tap the Control Button to turn on the air purifier.
2. Optionally, tap the Control Button repeatedly to change fan speed between I, II, and III.

Note: The display lights will automatically turn off after 60 seconds of inactivity.

3. Press and hold the Control Button for
4. seconds to turn the air purifier off.

Essential Oils

Do not add essential oils to the filter or the fan. The filter will be damaged by the oil and will eventually release an unpleasant smell. Only add essential oils to the aroma pad, located in the aroma box near the top of the air purifier.

Note: Essential oils are not included.

Adding Essential Oils

1. Push in the aroma box and pull it out.
2. Add 5–7 drops of essential oil to the aroma pad.
3. Place the aroma box back into the air purifier.

Note: Do not mix essential oil blends. Clean the aroma pad before using a new essential oil blend (see Cleaning the Aroma Pad, page 9).

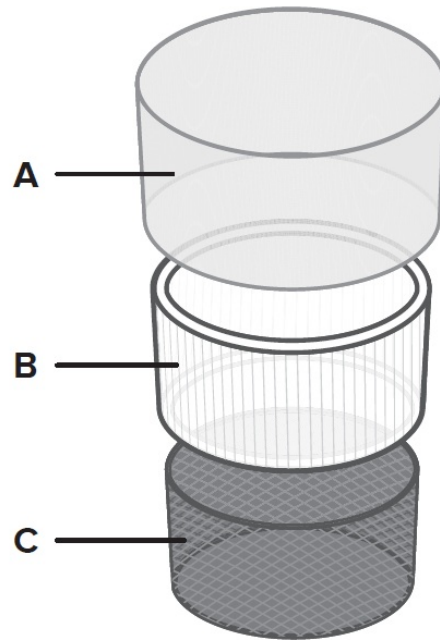
Humidity

Moisture may damage the filter. This air purifier should be used in an area with a humidity level below 85% RH. If you use the air purifier in excessively humid areas, the surface of the filter may become mouldy.

Note: Water or moisture will allow mould to grow. To solve a mould problem, get rid of the source of the moisture and clean up the mould. Air purifiers cannot solve an existing mould problem, and can only remove airborne mould spores and reduce odours.

About the Filters

The air purifier uses a 3-stage H13 True HEPA filtration system to purify air.



- **A. Pre-Filter**

- Captures large particles such as dust, lint, fibres, hair, and pet fur.
- Maximises the filter's life by protecting it.

- **B. H13 True HEPA Filter**

- Traps at least 99.97% of airborne particles 0.3 microns in size.
- Traps airborne particles such as fine dust, smoke particles, and allergens such as pollen and pet dander.

- **C. Activated Carbon Filter**

- Physically adsorbs smoke, odours, and fumes.

CARE & MAINTENANCE

Cleaning the Air Purifier

1. Unplug before cleaning.

Note: Do not clean with abrasive chemicals or flammable cleaning agents.

2. Wipe the outside of the air purifier with a soft, dry cloth. If necessary, wipe with a damp cloth, then immediately dry.
3. Vacuum the inside of the air purifier using a vacuum hose with a crevice attachment. [Figure 2.1]

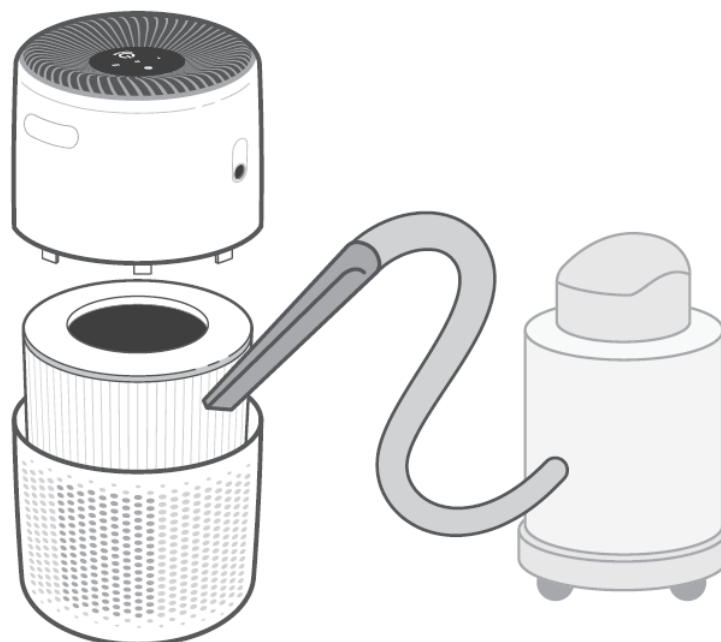


Figure 2.1

Check Filter Indicator

will light up as a reminder to check the filter. Depending on how often you use the air purifier, the indicator should turn on after about 4–6 months. You may not need to change your filter yet, but you should check it when turns on.

Resetting the Check Filter

Indicator

When the lights up red or if you want to change the filter before the lights up, do the following to reset the Check Filter Indicator:

1. Replace the filter (see page 9).
2. With the air purifier plugged in and the fan turned on, press and hold the Control Button for 3 seconds to turn it off.
3. With the air purifier turned off, press and hold the Control Button for 3 seconds.
4. will blink 3 times and turn off when successfully reset.

Cleaning the Filter

The outer pre-filter should be cleaned every 2–4 weeks to increase efficiency and extend the life of your filter. Clean the pre-filter using a soft brush or vacuum hose to remove hair, dust, and large particles. Do not clean the filter with water or other liquids.

Filter	When to Clean	How to Clean	When to Replace
Pre-Filter	Every 2–4 weeks	Use a soft brush or vacuum hose [Figure 2.1]	4–6 months
H13 True HEPA & Activated Carbon Filter	Do not clean		

When Should I Replace the Filter?

The filter should be replaced every 4–6 months. You may need to replace your filter earlier or later depending on how often you use your air purifier. Using your air purifier in an environment with relatively high pollution may

mean you will need to replace the filter more often, even if it is off.

You may need to replace your filter if you notice:

- Increased noise when the air purifier is on
- Decreased airflow
- Unusual odours
- A visibly clogged filter

Note:

- To maintain the performance of your air purifier, only use official Levoit filters. To buy replacement filters, go to Amazon and search B09FK5PN4H. Remember to reset after changing the filter (see page 8).

Replacing the Filter

1. Unplug and pick up the air purifier. Separate the two halves of the air purifier (see Getting Started, page 6).
Remove the old filters.
Clean out any remaining dust or hair inside the air purifier using a vacuum hose. Note: If you remove and set aside the top half of the air purifier, you can use water to clean the bottom half of the air purifier. Do not use water or liquids to clean the top half of the air purifier. [Figure 2.2]
2. Unwrap the new filter and place it into the bottom half of the air purifier (see Getting Started, page 6).
3. Put the two halves of the air purifier securely back together. Plug in the air purifier.
4. Reset the Check Filter Indicator (see page 8).

Cleaning the Aroma Pad

For effective aromatherapy, the aroma pad should always be cleaned before using a new essential oil blend. Do not mix essential oil blends.

To clean:

1. Remove the aroma box by pressing it in, then pulling it out.
2. Remove the aroma pad and rinse under warm, running water.
3. Dry with a clean cloth and place it back into the aroma box.
4. Place the aroma box back inside the air purifier.

Note: Do not pour liquid cleaners or detergents into the aroma pad or box.

Replacing the Aroma Pad

If the aroma pad becomes deformed or damaged after repeated washing, it may need to be replaced. To maintain the performance of your air purifier, only use official Levoit aroma pads. For more information, contact Customer Support .

Storage

If not using the air purifier for an extended period of time, wrap both the air purifier and the filter in plastic packaging and store in a dry place to avoid moisture damage.

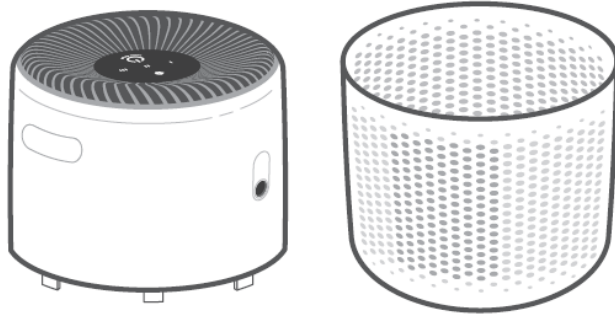


Figure 2.2

TROUBLESHOOTING

Problem	Possible Solution
Air purifier will not turn on or respond to button controls.	Plug in the air purifier.
	Disconnect the AC power adapter from the air purifier and reconnect it.
	Check to see if the AC power adapter is damaged. If it is, stop using the air purifier and contact Customer Support (see page 12).
	Plug the air purifier into a different outlet.
	The air purifier may be malfunctioning. Contact Customer Support (see page 12).
Airflow is significantly reduced.	Make sure the filter is removed from its packaging and properly in place (see Getting Started).
	Press the Control Button to increase fan speed.
	Leave 38 cm / 15 inches of clearance on all sides of the air purifier.
	The pre-filter may be clogged by large particles, such as hair or lint, blocking airflow. Clean the pre-filter (see page 8).
	Replace the filter (see Replacing the Filter).
Air purifier makes an unusual noise while the fan is on.	Make sure the filter is properly in place with plastic packaging removed (see page 6).
	Make sure the air purifier is operating on a hard, flat, level surface.
	Replace the filter (see Replacing the Filter).
	The air purifier may be damaged, or a foreign object may be inside. Stop using the air purifier and contact Customer Support . Do not try to repair the air purifier.
Poor air purification quality.	Press the Control Button to increase fan speed.
	Make sure no objects are blocking the sides or top of the air purifier (inlets or outlet).
	Make sure the filter is removed from its packaging and properly in place .
	Close doors and windows while using the air purifier.
	If the room is larger than 16 m ² / 169 ft ² , air purification will take longer.
	Replace the filter (see Replacing the Filter , .

Problem	Possible Solution
Strange smell coming from the air purifier.	Clean the filter and aroma pad or replace if necessary.
	Contact Customer Support .
	Avoid using your air purifier in an area with high humidity.
The Check Filter Indicator light is still on after replacing the filters.	Reset the Check Filter Indicator .
has not turned on after 4–6 months	is a reminder for you to check the filter and will light up based on how much the air purifier has been used . If you don't use your air purifier often, it will take longer to turn on.
turned on before 4 months	is a reminder for you to check the filter and will light up based on how much the air purifier has been used . If you run your air purifier frequently, it will turn on sooner.

If your problem is not listed, please contact Customer Support (see page 12).

WARRANTY INFORMATION

Product Name	Levoit Core Mini True HEPA Air Purifier
Models	LAP-C161-WEU
For your own reference, we strongly recommend that you record your order ID and date of purchase.	
Date of Purchase	
Order ID	

Terms & Policy

Arovast Corporation warrants all products to be of the highest quality in material, craftsmanship, and service, effective from the date of purchase to the end of the 2-year warranty period.

This warranty does not limit your rights under the applicable local consumer protection laws. If the applicable local consumer protection laws requires the manufacturer to provide a longer warranty period, the warranty period shall be extended to the shortest period required by the laws.

CUSTOMER SUPPORT

If you have any questions or concerns about your new product, please contact our local distributor or our helpful Customer Support Team.

Arovast Corporation

1202 N. Miller St., Suite A
Anaheim, CA 92806
USA

E-Mail:

support.uk@levoit.com

support.de@levoit.com


support.es@levoit.com

support.fr@levoit.com

support.it@levoit.com
support.eu@levoit.com

*Please have your order invoice and order ID ready before contacting Customer Support.

Documents / Resources

	<p>levoit LAP-C161-WEU Core Mini True HEPA Air Purifier [pdf] User Manual LAP-C161-WEU, LAP-C161-WEU Core Mini True HEPA Air Purifier, Core Mini True HEPA Air Purifier, Mini True HEPA Air Purifier, True HEPA Air Purifier, HEPA Air Purifier, Air Purifier, Purifier</p>
---	---

References

-  [Levoit - Air Purifiers, Humidifiers, Tower Fans, Vacuums & More](#)

[Manuals+.](#)