



## LEVITON TSL06-1LT Toggle Slide Dimmer Switch Instruction Manual

[Home](#) » [Leviton](#) » LEVITON TSL06-1LT Toggle Slide Dimmer Switch Instruction Manual 

LEVITON TSL06-1LT Toggle Slide Dimmer Switch Instruction Manual



## Contents

- [1 Applications](#)
- [2 Features and Benefits](#)
- [3 Specifications At-A-Glance](#)
- [4 Maximum Load For Multi-Gang Applications](#)
- [5 Dimensional Drawings](#)
- [6 Wiring Diagrams](#)
- [7 Ordering Information](#)
- [8 Leviton Manufacturing Co., Inc.](#)
- [9 Documents / Resources](#)
  - [9.1 References](#)
- [10 Related Posts](#)

## Applications

Toggle Slide Controls are designed for both single pole (one location) and 3-way (two location) applications. They feature a traditional toggle switch that provides preset ON/OFF switching and a smooth, integrated slide bar for fine adjustment of lighting levels.

Toggle Slide Dimmers provide smooth, slide-action, full-range dimming for incandescent, dimmable LED, dimmable CFL, halogen and magnetic low voltage (MLV) loads. The line also includes a Fan Speed Control.

For a traditional home, the classic style of Toggle Slide Controls offers the ideal way to upgrade the functionality of devices without compromising the character of the décor.

## Features and Benefits

- Integrated linear full-range slide control for easy, precise operation
- Separate ON/OFF toggle switch that preserves the selected setting
- Provides single pole (one location) or 3-way (two location) control when paired with a 3-way switch
- Slim, compact housing fits easily into a standard wallbox
- Suitable for multi-gang installations
- No removal of fins required for multi-gang installations
- Available in White, Ivory and Light Almond
- Built-in radio/TV interference filter

## LED/CFL/Incandescent/Halogen/MLV Dimmers

- TSL06 and TSM10 feature a built-in starting technology
- Wider dimming range for LED and CFL lamps than conventional incandescent dimmers
- Customize the dimming range of LED lamps using the minimum/maximum light level adjustment to eliminate flicker, maximize energy savings, and optimize ambiance
- Forward phase control
- Locator light built into switch can be disabled

## Quiet Fan Speed Control

- 1.5 Amp, 3-speed
- Combines a toggle ON/OFF switch with a contemporary slender slide bar for the selection of low, medium or high fan speeds
- Ideal for libraries, home offices, bedrooms and any area where ceiling fan noise could become distracting

### Typical Specifications

Operating Temperature Range: 0°C to 55°C

Storage Temperature Range: 10°C to 85°C

Relative Humidity: 20% to 90% non-condensing

### Agency Standards and Compliance

#### Dimmers

- cCSAus Certified to Standard 184.1
- Complies with UL 1472
- NOM

#### Fan Speed Control

- cCSAus Certified to C22.2 No. 156
- Complies with UL 1917
- NOM

### Warranty Information

Five-Year Limited Warranty

### Installation Considerations

TSL06 and TSM10: LED and CFL lamps marked or rated as dimmable can be used with this dimmer. For a complete list of approved LED lamps visit [www.leviton.com/led](http://www.leviton.com/led).

### Mode Selector Switch



Provides options to optimize performance for LED lamps to help ensure best performance for the load being controlled (factory preset to Mode A)

Switch also enables the programming mode to adjust maximum and minimum light levels to match the full range of load and helps eliminate flicker for a smoother experience

## Specifications At-A-Glance

	<b>TSL06</b>	<b>TSM10</b>	<b>TSF01</b>
<b>Voltage, Frequency</b>	<b>Dimmer</b>	<b>Dimmer</b>	<b>Fan Speed Control</b>
120VAC-60Hz	Yes	Yes	Yes
<b>Load Rating</b>			
Incandescent/Halogen	600W	1000W	–
LED/CFL	300W	400W	–
MLV	–	1000VA	–
Motor	–	–	1.5A
<b>Mechanical</b>			
Neutral Required	No	No	No
Single Pole/3-Way	Yes	Yes	Yes
Locator Light	Yes	Yes	No

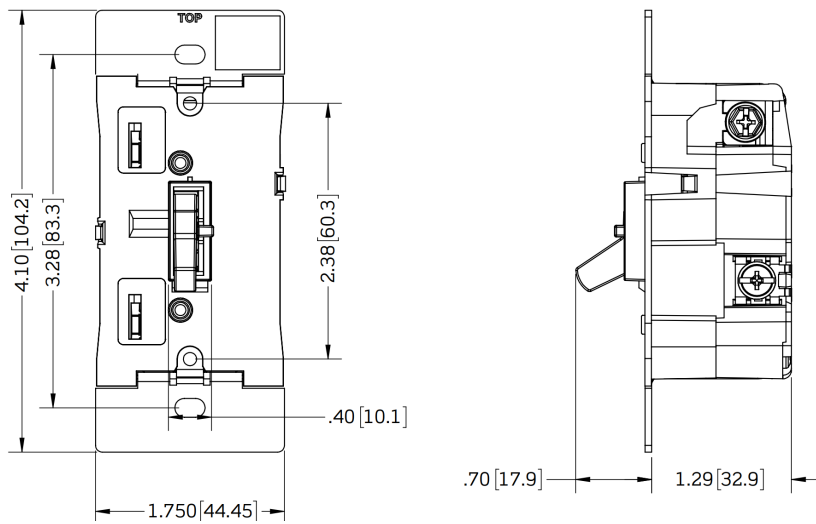
## Maximum Load For Multi-Gang Applications

In multi-gang applications de-rating may be required in accordance with the following chart.

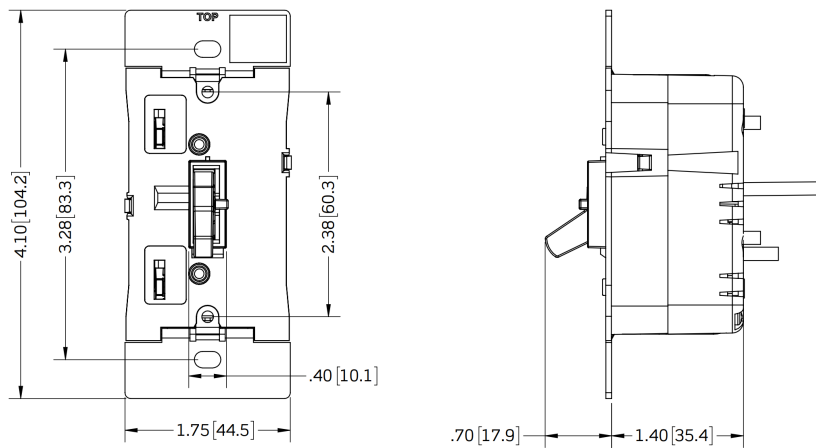
<b>Cat. No.</b>	<b>Single</b>	<b>2-gang</b>	<b>3-gang or more</b>
TSL06	600W Incandescent/Halogen 300 W (2.5A) LED/CFL	500W Incandescent/Halogen 300 W (2.5A) LED/CFL	500W Incandescent/Halogen 300W (2.5A) LED/CFL
TSM10	1000VA MLV  400W (3.75A) LED/CFL  1000W Incandescent/Halogen	800VA MLV  400W (3.33A) LED/CFL  800W Incandescent/Halogen	700VA MLV  400W (3.33A) LED/CFL  700W Incandescent/Halogen
TSF01	1.5A	1.5A	1.5A

## Dimensional Drawings

**Cat. No. TSL06**

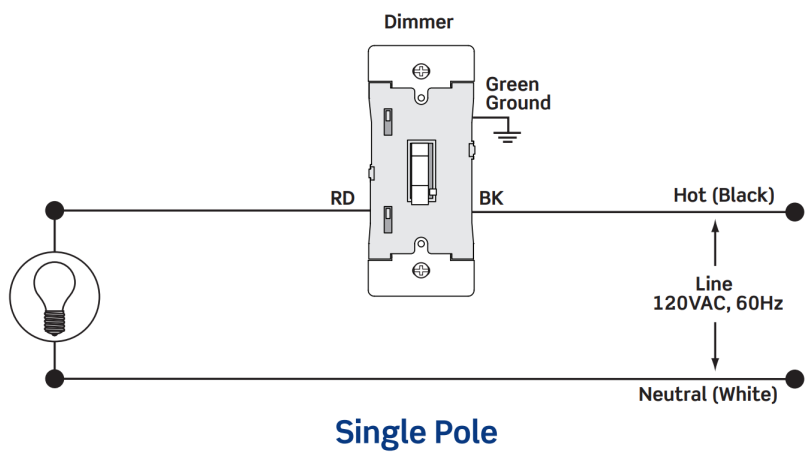


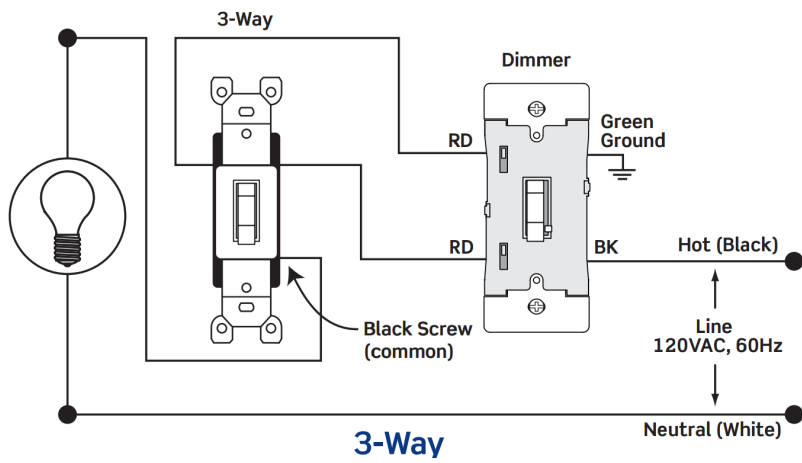
Cat. No. TSM10, TSF01



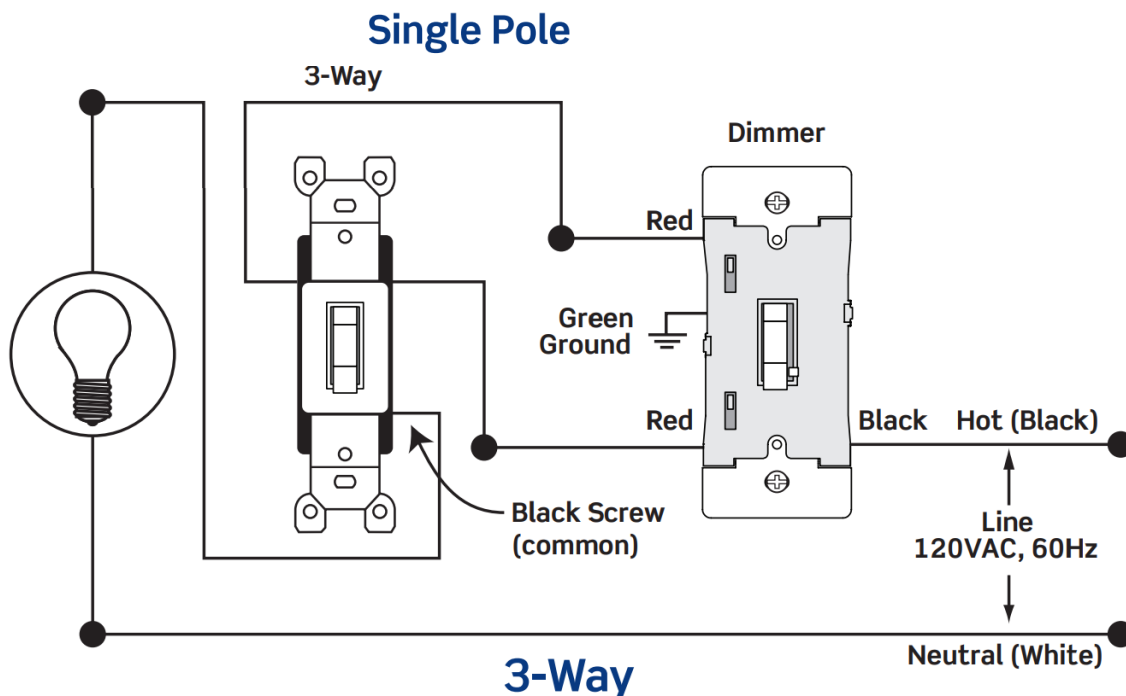
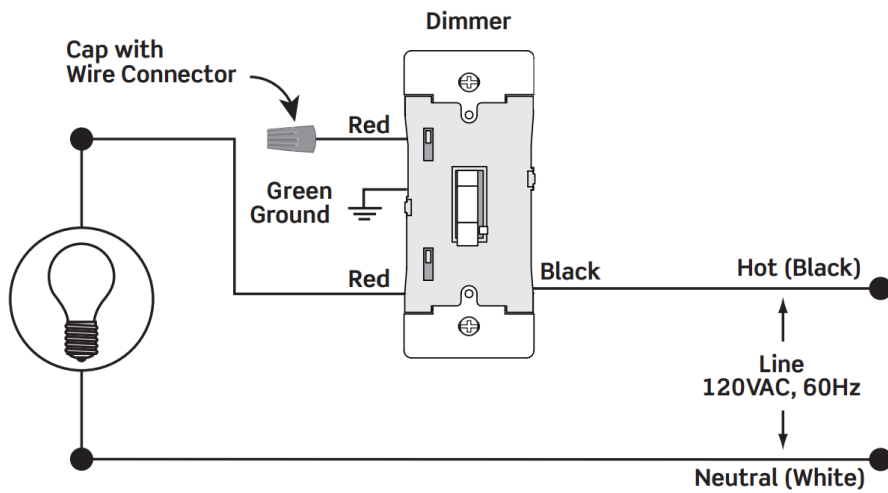
### Wiring Diagrams

Cat. No. TSL06

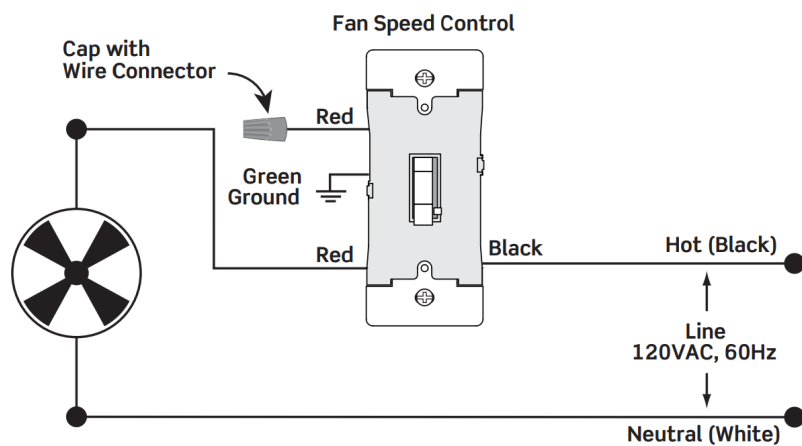




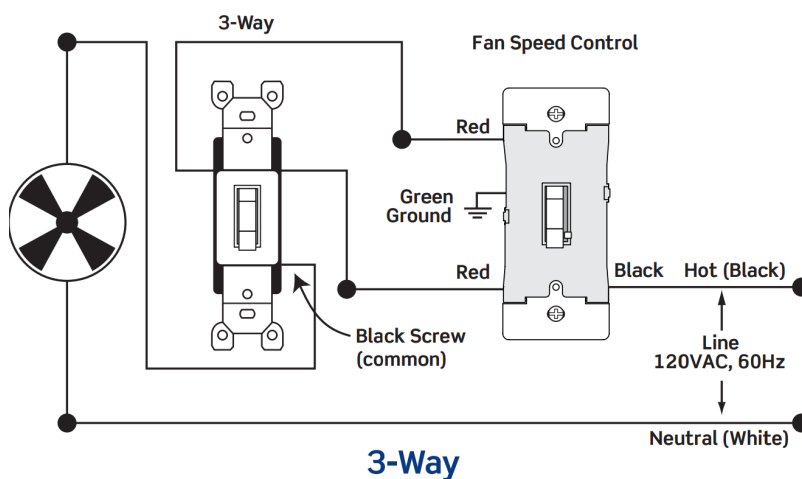
Cat. No. TSM10



Cat. No. TSF01



## Single Pole



## Ordering Information

All Toggle Slide Controls provide single pole or 3-way control when used with a 3-way switch.

Description	Cat. No.	Rating	Color*
LED/CFL/Incandescent Dimmer with LED locator	TSL06	300W LED/CFL 600W Incandescent/Halogen	W, I, T, G, E, B
Magnetic Low Voltage Dimmer with LED locator	TSM10	1000W MLV 400W LED/CFL 1000W Incandescent/Halogen	W, I, T
Quiet Fan Speed Control, 3-speed	TSF01	1.5A Motor	W, I, T

## Leviton Manufacturing Co., Inc.

Tech Line: 1-800-824-3005


Mon-Fri 8am-10pm EST, Saturday 9am-7pm EST, Sunday 9am-5pm EST For 24/7 product support visit [www.leviton.com/support](http://www.leviton.com/support)

Visit our Website at: [www.leviton.com/dimmers](http://www.leviton.com/dimmers)



---

## Documents / Resources

	<p><b><a href="#">LEVITON TSL06-1LT Toggle Slide Dimmer Switch</a></b> [pdf] Instruction Manual TSL06-1LT Toggle Slide Dimmer Switch, TSL06-1LT, Toggle Slide Dimmer Switch, Slide Dimmer Switch, Dimmer Switch, Switch</p>
---	---

## References

- [🌐 Dimmer Light Switches for your home | Smart Dimmers & Dimmers for LED Lights](#)
- [🌐 LED Bulb Compatibility Tool](#)
- [🌐 Leviton Product Support | Contact Us](#)
- [User Manual](#)