



LEVITON DT230 Electronic Countdown Timer Switch Instruction Manual

[Home](#) » [Leviton](#) » **LEVITON DT230 Electronic Countdown Timer Switch Instruction Manual** 

Contents

- [1 LEVITON DT230 Electronic Countdown Timer Switch](#)
- [2 Product Information](#)
- [3 Product Usage Instructions](#)
- [4 INSTALLATION INSTRUCTIONS](#)
- [5 LED Location and Status](#)
- [6 Operation](#)
- [7 Changing Your Device's Color](#)
- [8 FCC STATEMENT](#)
- [9 Documents / Resources](#)
 - [9.1 References](#)
- [10 Related Posts](#)



LEVITON DT230 Electronic Countdown Timer Switch



Product Information

Specifications

- Product Name: Electronic Countdown Timer Switch
- Model Numbers: DT230, DT260, DT202, DT204, DT212
- Lighted Ratings: 20 A Resistive/16 A Inductive, 1,800 W Incandescent/Halogen, 600 W LED/CFL, 1,200 VA ELV/MLV/Fluorescent, 1 HP or 16 A Motor/Fan, 120 VAC, 60 Hz
- Single-Pole, 3-Way/Multi-Way

Product Usage Instructions

Installation Instructions

WARNING: TO AVOID FIRE, SHOCK, OR DEATH, turn OFF the power at the circuit breaker or fuse and test that the power is OFF before wiring!

1. Identify your wires (most commonly shown).
 - **NOTE:** A Neutral wire is required for operation. If the wiring in the wall box does not resemble this configuration, consult an electrician.
2. Wire device. Work on one connection at a time and connect the wires as shown.
3. DO NOT remove the insulating label.

ay Wiring with Two Timers (DT2xx):

To Load:

- Timer 2

From Branch Circuit:

- TRAVELER (Yellow/Red)
- LOAD (Blue)
- LINE (Black)
- NEUTRAL (White)
- GROUND (Green)
- TRAVELER 1 (Yellow/Red)
- LOAD TRAVELER 2
- NEUTRAL GROUND

3-Way Wiring with DD0SR-DLZ Switch Companion

To Load:

- DD0SR-DLZ Switch Companion

From Timer 1:

- LINE
- TRAVELER 2
- NEUTRAL
- GROUND

DT2xx Timer:

- TRAVELER (Yellow/Red)
- LOAD (Blue)
- LINE (Black)
- NEUTRAL (White)
- GROUND (Green)

FAQ:

Q: Can I install the timer in a different location than the load wire?

- **A:** No, the timer must be installed in the same location as the load wire.

Q: What are the countdown timer options?

A: The countdown timer options are as follows:

Model	Button 1	Button 2	Button 3	Button 4
DT230	30 minutes	15 minutes	10 minutes	5 minutes
DT260	60 minutes	30 minutes	20 minutes	10 minutes
DT202	2 hours	1 hour	30 minutes	15 minutes
DT204	4 hours	2 hours	1 hour	30 minutes
DT212	12 hours	1 hour	30 minutes	—

WARNINGS:

- **TO AVOID FIRE, SHOCK, OR DEATH:** TURN OFF THE POWER AT THE CIRCUIT BREAKER OR FUSE AND TEST THAT THE POWER IS OFF BEFORE WIRING!
- TO AVOID PERSONAL INJURY OR PROPERTY DAMAGE, DO NOT install to control a receptacle or a load above the specified rating.
- DO NOT use to control lighting if it is the only light source in the area.
- To be installed and/or used under electrical codes and regulations.
- If you are not sure about any part of these instructions, consult an electrician.

CAUTIONS:

- DO NOT use disinfecting products, including foggers, sprays, or other types of atomized cleaning agents.
- DO NOT spray liquid onto the product.
- To clean, use a damp cloth with mild soap.
- No user-serviceable components. DO NOT attempt to service or repair.
- Use this device WITH COPPER OR COPPER-CLAD WIRE ONLY.

INSTALLATION INSTRUCTIONS

Features

- Easy operation with four preset buttons and one “OFF” button.
- Simple press and hold override function for a 24-hour override.
- For Single-Pole, 3-Way, Multi-Way, and Multi-Timer wiring.
- Zero Cross turn-ON technology that extends the life of the switching relays (turns ON at the minimum voltage).
- You can attach up to nine (9) DD0SR-1Z Switch Companions and up to four (4) DD0SR-DLZ Switch Companions to this Electronic Countdown Timer Switch.
- Color change kits are available in white, light almond, ivory, black, brown, and gray (DTKIT-00x).
- Available with five countdown timer options (30 and 60 minutes, and 2, 4, and 12 hours).
- Available in a 15A single-pole timer (Cat. No. DT1xx).

You Will Need:

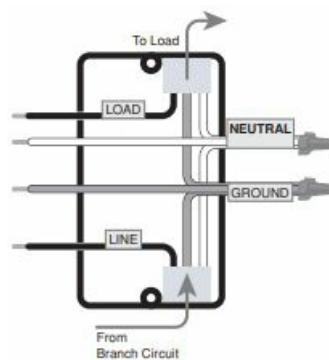
- Slotted/Phillips screwdriver
- Electrical tape
- Cutters
- Pliers

Installation

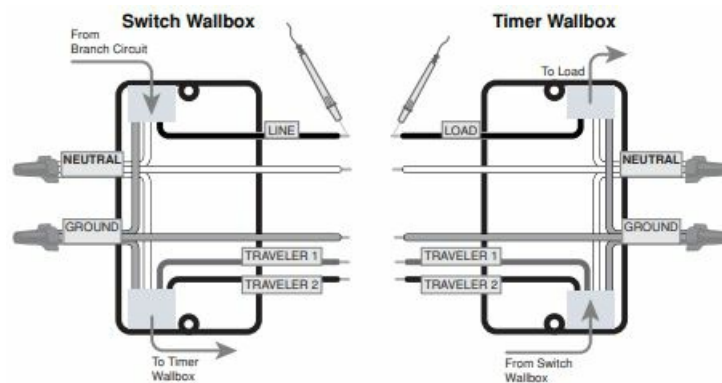
- **WARNING:** TO AVOID FIRE, SHOCK, OR DEATH, turn OFF the power at circuit breaker or fuse and test that the power is OFF before wiring!

1. Identify your wires (most commonly shown).

- **NOTE:** A Neutral wire is required for operation. If the wiring in the wall box does not resemble this configuration, consult an electrician.
- **Single Pole**

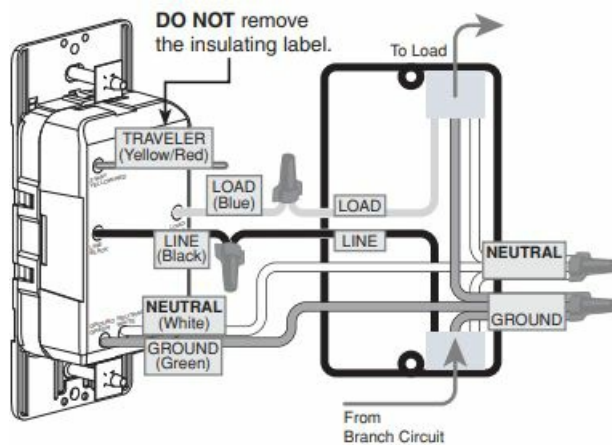


- 3-Way
- **NOTE:** The timer must be installed in the same location as the load wire.

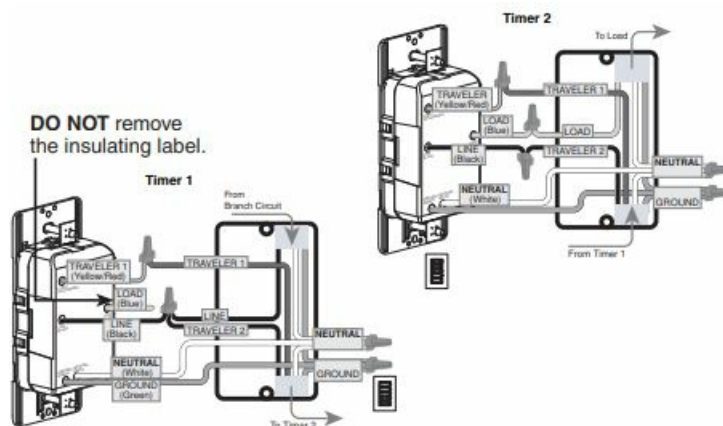


2. Wire device

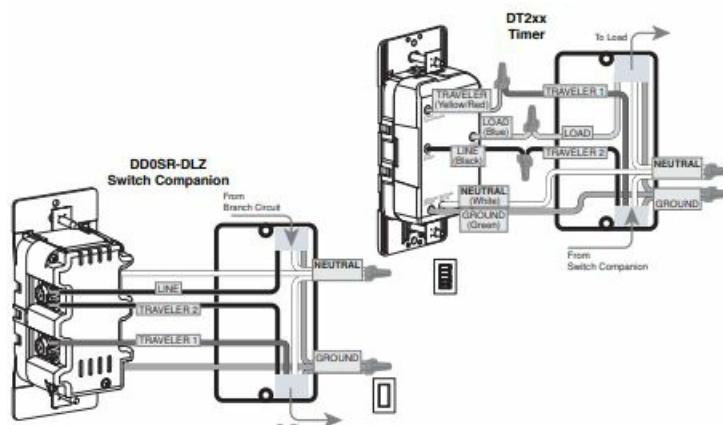
- Work on one connection at a time, and connect the wires as shown.
- **Single Pole**



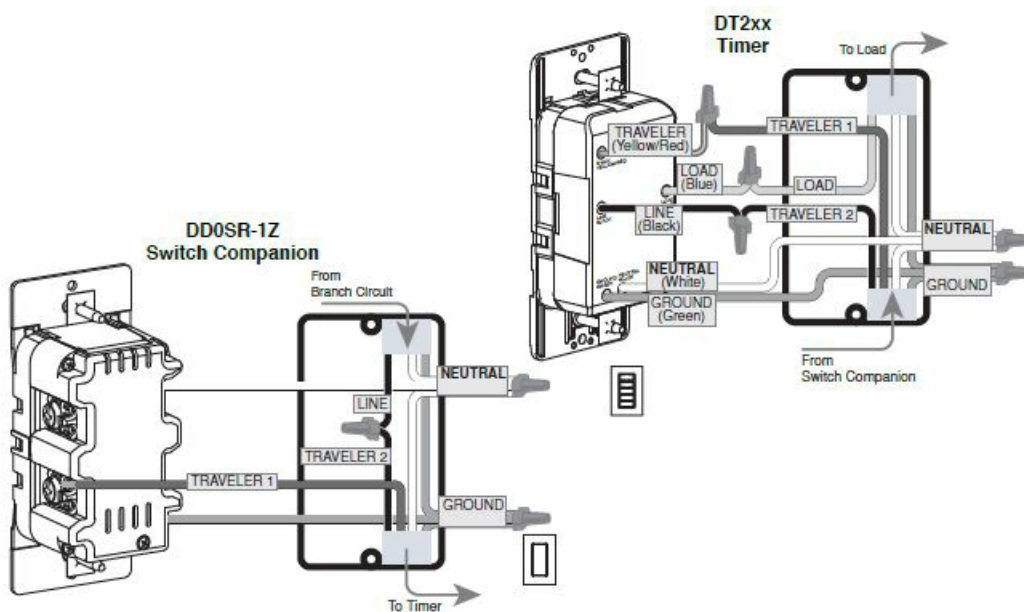
- 3-Way Wiring with Two Timers (DT2xx)



- 3-Way Wiring with DD0SR-DLZ Switch Companion



- 3-Way Wiring with DD0SR-01Z Switch Companion

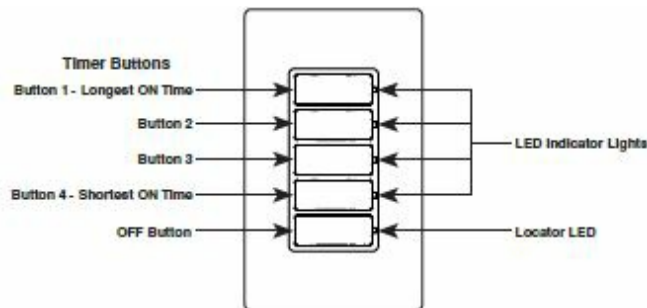


3. Test and mount

- Restore power. Wait 20 seconds for the timer to power up.
- **NOTE:** The bottom green LED blinks once every 5 seconds during power-up.
- Press any timer button to turn the load ON.
- **NOTE:** If load does not turn ON, refer to the “What to do if...” section.
- Turn OFF the power at the circuit breaker before completing the installation.
- Gently push wires into the wall box. Use the screws to attach a timer to the wall box.
- Install wallplate.
- Restore power.

LED Location and Status

- Four (4) timer buttons and an OFF button.
- Each timer button has an adjacent green LED to indicate the current countdown time.
- The green bottom Locator LED is ON when the load is OFF, and it is OFF when the load is ON.



Mode	Location	Status
Power Up	Next to the OFF button	Blinks once every 5 seconds.
Load OFF	Next to the OFF button	ON
Load ON	Next to Button 1, 2, 3, or 4	ON
24-Hour Timer Override	Next to Button 1	Blinks once per second.
Last Minute Load Is ON	Next to Button 4	Blinks once per second.

Operation

1. To turn the load ON, press one of the timer buttons. Each button has a preset countdown time. The green LED adjacent to the selected button illuminates, and the load stays on for the selected period.
2. To select a different countdown time, press the button that corresponds to the desired time. The LED adjacent to the selected button illuminates, and the load stays on for the newly selected period.
3. To turn the load OFF, press the OFF button, or wait until the selected amount of time elapses. The LED

adjacent to each button turns OFF as time passes to the next lower preset level.

Timer Override

- To override the timer countdown, press and hold the top button for more than 5 seconds. The LED blinks once per second to indicate the timer is in the EXTENDED ON state.
- The timer automatically turns OFF after 24 hours. To exit the EXTENDED ON state, press any timer button or the OFF button.

Multi-Location Control

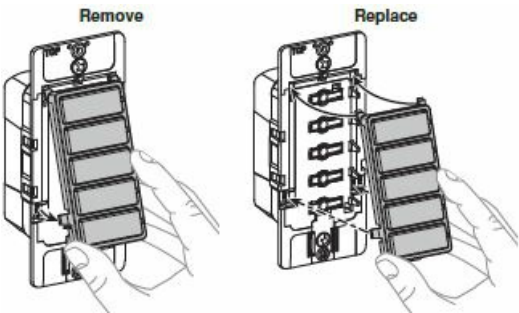
- The Timer can be turned ON or OFF from any of the Wired Switch Companion locations. The default ON time when a wired switch companion is pressed to turn the load ON is the last countdown time selected.
- The timer can be controlled from up to nine (9) other locations with wired switch companions (without LEDs – DD0SR-1Z), or up to four (4) other locations with wired switch companions (with LEDs – DD0SR-DLZ).

Multi-Timer Control

When the timers are connected in a 3-way control, either the timer can turn ON or OFF the load with both timers showing the same countdown LED sequence.

Model	Countdown Timer Options				
	Button 1	Button 2	Button 3	Button 4	Button 5
DT230	30 minutes	15 minutes	10 minutes	5 minutes	Off
DT260	60 minutes	30 minutes	20 minutes	10 minutes	Off
DT202	2 hours	1 hour	30 minutes	15 minutes	Off
DT204	4 hours	2 hours	1 hour	30 minutes	Off
DT212	12 hours	8 hours	4 hours	2 hours	Off

Changing Your Device’s Color



Color change kits are available in White (W), Light Almond (T), Ivory (I), Black (E), Brown (B), and Gray (G) (DTKIT-00x).

What to do if

- Intermittent operation
- Check that the load does not have a bad connection.
- Check if wires are secured firmly to the leads of the timer switch.
- The load does not turn ON and the Locator LED does not turn ON
- Check if the circuit breaker or fuse has tripped.
- Check if the load has burned out.
- Make sure the Neutral connection is wired properly.
- Wired Switch Companion does not operate load.
- Make sure that the total wire length does not exceed 300 ft (90 m).
- Make sure to use a Neutral wire with a Wired Switch Companion.

FCC STATEMENT

This device complies with Part 15 of the FCC Rules. Operation is subject to the following two conditions:

1. this device may not cause harmful interference,
2. this device must accept any interference received, including interference that may cause undesired operation of the device.

This equipment has been tested and found to comply with the limits for a Class B Digital device, according to Part 15 of the FCC Rules. These limits are designed to provide reasonable protection against harmful interference in a residential installation. This equipment generates, uses, and can radiate radio frequency energy and, if not installed and used under the instructions, may cause harmful interference to radio communications. However, there is no guarantee that interference will not occur in a particular installation. If this equipment does cause harmful interference to radio or television reception, which can be determined by turning the equipment OFF and ON, the user is encouraged to try to correct the interference by one or more of the following measures:

- Reorient or relocate the receiving antenna.
- Connect the equipment to an outlet on a circuit different from that to which the receiver is connected.
- Increase the separation between the equipment and the receiver.
- Consult the dealer or an experienced radio/TV technician for help.

FCC CAUTION:

Any changes or modifications not expressly approved by Leviton Manufacturing Co., Inc., could void the user's authority to operate the equipment.

IC STATEMENT

This device complies with Industry Canada license-exempt RSS standard(s). Operation is subject to the following two conditions:

1. this device may not cause interference,
2. this device must accept any interference, including interference that may cause undesired operation of the device.

Patents covering this product, if any, can be found on www.leviton.com/patents.

Leviton and the Leviton logo are the registered trademarks of Leviton Manufacturing Co., Inc.

FOR CANADA ONLY

For warranty information and/or product returns, residents of Canada should contact Leviton in writing at Leviton Manufacturing of Canada ULC the attention of the Quality Assurance Department, 165 Hymus Blvd, Pointe-Claire (Quebec), Canada H9R 1E9, or by telephone at 1 800 405-5320.

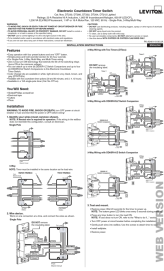
LIMITED 5-YEAR PRODUCT WARRANTY

For Leviton's limited 5-year product warranty, go to www.leviton.com. For a printed copy of the warranty you may call 1-800-323-8920 or write to Leviton Manufacturing Co., Inc.,

Att: Customer Service Dept., 201 North Service Road, Melville, New York 11747.

- For Technical Assistance Call: 1-800-824-3005 (USA Only) or 1-800-405-5320 (Canada Only) at www.leviton.com.
 - © 2023 Leviton Mfg. Co., Inc.
 - Electronic Countdown Timer Switch
 - **Cat. Nos.** DT230, DT260, DT202, DT204, DT212 Lighted
 - **Ratings:** 20 A Resistive/16 A Inductive, 1,800 W Incandescent/Halogen, 600 W LED/CFL, 1,200 VA ELV/MLV/Fluorescent, 1 HP or 16 A Motor/Fan, 120 VAC, 60 Hz – Single-Pole, 3-Way/Multi-Way
-

Documents / Resources

	<p>LEVITON DT230 Electronic Countdown Timer Switch [pdf] Instruction Manual DT230 Electronic Countdown Timer Switch, DT230, Electronic Countdown Timer Switch, Count down Timer Switch, Timer Switch, Switch</p>
---	--

References

- [User Manual](#)