



LEVITON Decora Smart Wi-Fi 4 Button Controller User Guide

[Home](#) » [Leviton](#) » LEVITON Decora Smart Wi-Fi 4 Button Controller User Guide 

LEVITON Decora Smart Wi-Fi 4 Button Controller User Guide



Contents

- 1 Welcome
- 2 What you need to make it work
- 3 Features
- 4 Installation
- 5 Test and install
- 6 Congratulations!
- 7 Get the app
- 8 Launch the app
- 9 Add to your home network
- 10 Configure
- 11 Factory Default
- 12 Diagnostic light
- 13 Bottom button light status
- 14 Safety First
 - 14.1 WARNING: TO AVOID FIRE, PERSONAL INJURY OR DEATH DO NOT USE for the control
 - 14.2 ADDITIONAL RATINGS:
- 15 Limited 5 Year Warranty
 - 15.1 FCC CAUTION
 - 15.2 FCC SUPPLIER'S DECLARATION OF CONFORMITY:
 - 15.3 IC STATEMENT
 - 15.4 RF EXPOSURE AND CO-LOCATION:
- 16 Documents / Resources
- 17 Related Posts

Welcome

The Decora Smart Wi-Fi 4 Button Controller provides sophisticated in-wall control of multiple Decora Smart Wi-Fi devices, room lighting scenes and whole house lighting activities. Using the My Leviton app, easily create "Movie Time", or activities such as "Go to Bed" and run them using your voice, app, or controller buttons. The custom lighting scenes can include any product from the Decora Smart Wi-Fi family including dimmers, switches and smart plugs.



We are here to help



1-800-824-3005 (USA)
1-800-405-5320 (Canada)

**ONLINE**

leviton.com/decorasmart

**CHAT**

www.leviton.com

**EMAIL**

dssupport@leviton.com

What you need to make it work

To install and use your 4-button controller:

1. A home Wi-Fi network with high speed internet connection (802.11 a/b/g/n @ 2.4 or 5 GHz and WPA or WPA2).
2. An iOS (11.0 or later) or Android (6.0 or later) mobile device.
3. An available interior wallbox with a hot, neutral and ground wire. **NOTE:** No lighting loads may be directly wired to your 4 Button Controller. **WARNING:** Do not use with aluminum wire.
4. One or more Decora Smart Wi-Fi products (i.e., dimmer, switch or plug-in) with firmware version 1.5 or higher.
NOTE: Use the My Leviton app to update firmware.

RATINGS	
Power	120VAC, 50/60Hz
Operating Temp	0°C – 40°C (32°F – 104°F)
Operating Humidity	0-90% non condensing

Features

Command buttons

Configure the buttons via the My Leviton app to create room scenes and whole house lighting activities.

Vanishing feedback light

Each button has a feedback light that illuminates with every button press. After the command is sent, the button will no longer be lit.



Installation

The DW4BC is designed for new installation or to be retrofitted by a licensed electrical contractor. A hot, neutral, and ground is required for proper installation. The DW4BC is designed to send scene commands to Decora Smart Wi-Fi products; a load is not directly connected to the DW4BC.

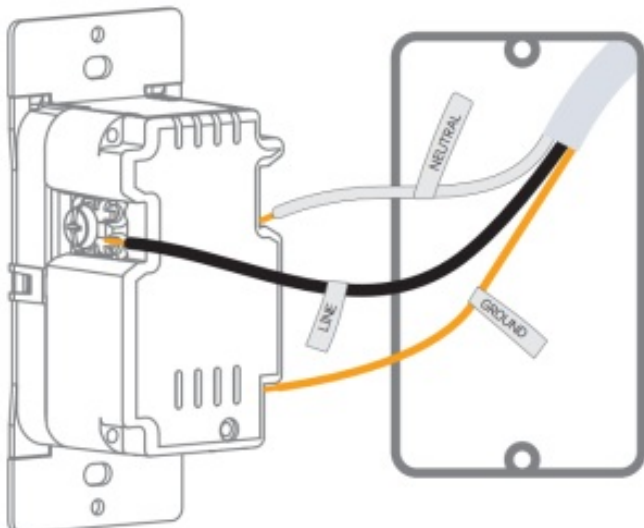
For additional support use the support options in the My Leviton app or contact technical services (page 4).

NOTE: Before you wire, check to make sure a strong Wi-Fi signal is present at the location where you want to install your controller.

WARNING: TO AVOID FIRE, SHOCK OR DEATH, turn off power at the circuit breaker.

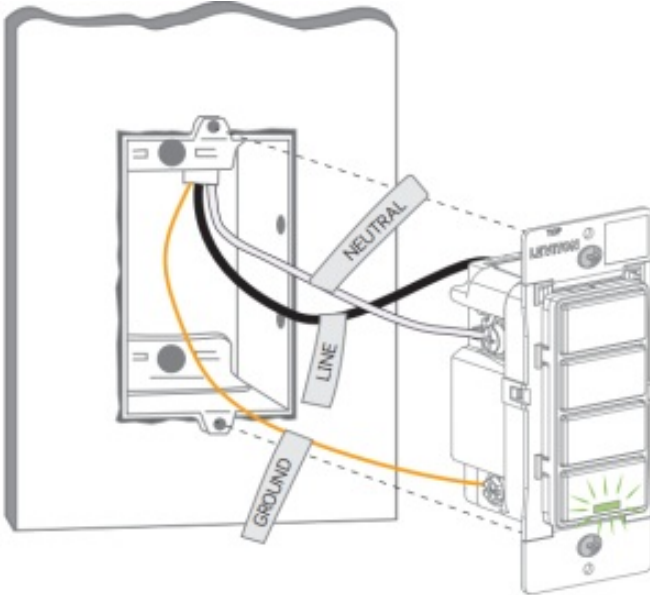
1. Work on only one connection at a time.
2. Connect wires as shown.

NOTE: Neutral connection is required.



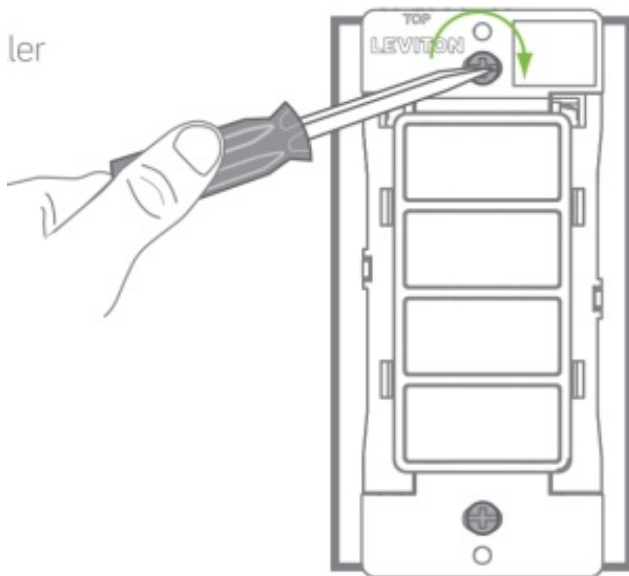
Test and install

1. Restore power. Status light should flash green indicating your controller is ready to be added to a network.

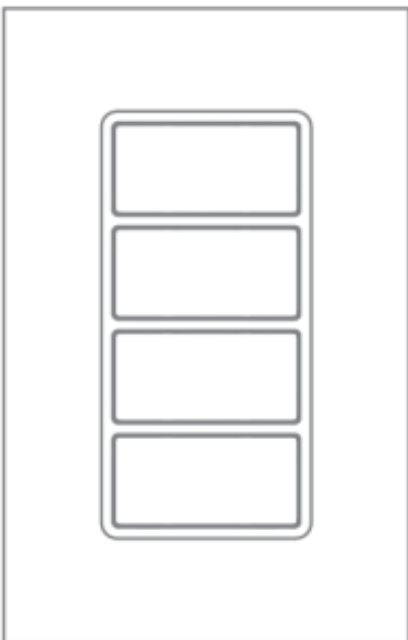


Turn off power at circuit breaker before completing the controller installation.

2. Gently push wires into wall box. Screw controller to box.



3. Install wallplate base and snap on Decora® wallplate. Restore power.



Congratulations!

Your Decora Smart 4 button controller is ready to control your Decora Smart Wi-Fi switches and dimmers.

Get the app

Visit <http://my.leviton.com> and select the link for your smartphone or tablet.



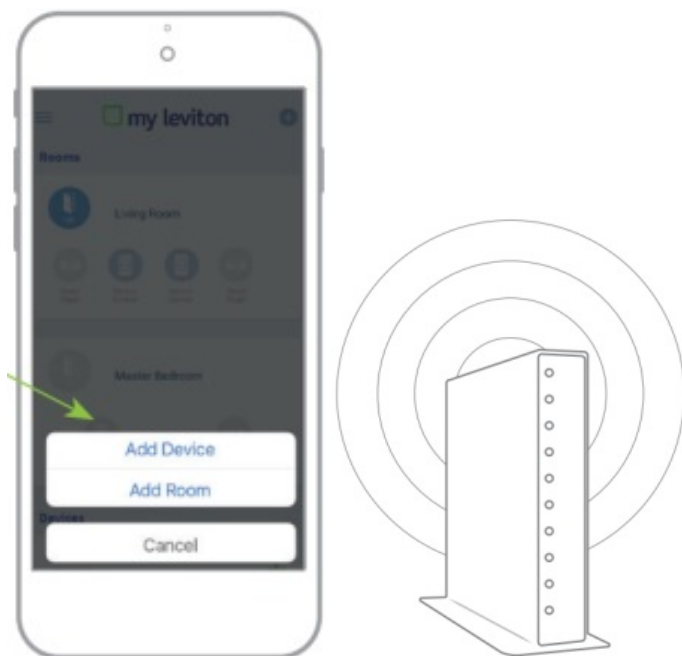
Launch the app

1. Launch the My Leviton App.
2. Log in or choose Sign Up for an Account.
3. Follow the instructions on the screen.



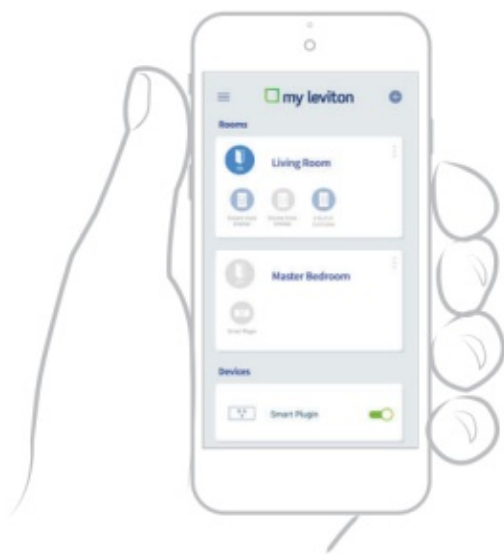
Add to your home network

1. Select the in the upper right corner to add a device.
2. Follow the app instructions to add your device to your home network.



Configure

1. Open the My Leviton App.
2. Follow prompts in the app to create scenes and assign a scene to each button.



NOTE: Watch for firmware and app updates as new features are always being added to the 4 Button Controller.

Factory Default

To reset the 4 button controller to factory settings:

1. Hold the top button for a total of 14 seconds.
2. After the first 7 seconds the LED turns amber. Continue to hold.
3. After a total of 14 seconds, the bottom button's status light will quickly flash red/amber.
4. Release the top button and it will reset.

Diagnostic light

If your device is not properly connecting, the bottom button light can be used as a diagnostic tool. Press the top button for two seconds (but less than 7 seconds) and release.

COLOR	STATUS
Green	Device is connected to Wi-Fi and the My Leviton cloud and is working properly.
Amber	Device is not connected to the Wi-Fi network.
Red	Device is connected to Wi-Fi but not the My Leviton cloud (most likely there is no internet signal).
Alternate green and yellow	Device is connected to Wi-Fi and the My Leviton cloud but it has been unable to set the time from the internet.
Please see My.Leviton.com support for additional diagnostic assistance	

Bottom button light status

When power is first applied to the controller and during the enrollment process, the bottom button light may be used as a diagnostic tool.

COLOR	ACTIVITY	STATUS
Green	Slow Blink	Ready to be added to a Wi-Fi network
Green	Flash	Connecting to a Wi-Fi network
Green or Off	Solid	Normal operation, briefly lights up when a button is pressed
Amber	Blinking	Device was not able to connect to the Wi-Fi network
Green, Red, Amber	Scrolling	Joining My Leviton or identify feature was triggered in the app
Please see My.Leviton.com support for additional diagnostic assistance		

Safety First

WARNING: TO AVOID FIRE, PERSONAL INJURY OR DEATH DO NOT USE for the control

of high power heating appliances such as portable heaters. There can be unexpected consequences if not used with care. For example, an empty coffee pot can be remotely turned on. If that should happen, your coffee pot could be damaged from overheating.

If an electric heater is turned on by remote control while clothing is draped over it, a fire could result. This module will not control lighting that is used with electronic low-voltage and high frequency power supply transformers, nor high pressure discharge lamps (HID lighting). This includes mercury-vapor, sodium vapor and metal halide lamps.

WARNINGS;

- This product is to be installed and/or used in accordance with electrical codes and regulations.
- Indoor use only.

- If you are unsure about any part of these instructions, consult an electrician.
- To reduce the risk of overheating and possible damage to other equipment do not install to control a motor-operated receptacle, fluorescent lighting fixture, or a transformer supplied.
- Turn off power at the circuit breaker when servicing.
- Leviton Wi-Fi enabled devices rely on Wi-Fi communication. Increasing the number of Wi-Fi devices can affect Wi-Fi. Consult the network's wireless access point specifications to determine the maximum number of supported Wi-Fi devices. For installations with a large number of Leviton Wi-Fi devices, a high performance wireless access point capable of supporting a large number of devices may be required.
- Save this instruction sheet. It contains important technical data along with testing and troubleshooting information which will be useful after installation is complete.

ADDITIONAL RATINGS:

- Purpose of control: Operating Control
- Action Control Type: 1
- Pollution Degree: 2
- Impulse Voltage: 2500V

Limited 5 Year Warranty

For Leviton's limited product warranty, go to www.leviton.com. For a printed copy of the warranty, call 1-800-824-3005.

FOR CANADA ONLY

For warranty information and/or product returns, residents of Canada should contact Leviton in writing at Leviton Manufacturing of Canada Ltd to the attention of the Quality Assurance Department, 165 Hymus Blvd, Pointe-Claire (Quebec), Canada H9R 1E9 or by telephone at 1 800-405-5320.

FCC COMPLIANCE STATEMENT

The enclosed device complies with Part 15 of the FCC Rules. Operation is subject to the following two conditions: (i.) This device may not cause harmful interference (ii.) This device must accept any interference received, including interference that may cause undesired operation. Any changes or modifications not expressly approved by Leviton could void the user's authority to operate this equipment. This equipment has been tested and found to comply with the limits for a Class B digital device, pursuant to part 15 of the FCC Rules. These limits are designed to provide reasonable protection against harmful interference in a residential installation. This equipment generates uses and can radiate radio frequency energy and, if not installed and used in accordance with the instructions, may cause harmful interference to radio communications. However, there is no guarantee that interference will not occur in a particular installation. If this equipment does cause harmful interference to radio or television reception, which can be determined by turning the equipment off and on, the user is encouraged to try to correct the interference by one or more of the following measures:

- Reorient or relocate the receiving antenna.
- Increase the separation between the equipment and receiver.
- Connect the equipment into an outlet on a circuit different from that to which the receiver is connected.
- Consult the dealer or an experienced radio/TV technician for help.

FCC CAUTION

Any changes or modifications not expressly approved by Leviton Manufacturing Co., Inc., could void the user's

authority to operate the equipment.

FCC SUPPLIER'S DECLARATION OF CONFORMITY:

Model DW4BC – 4 Button Controller is manufactured by Leviton Manufacturing Co., Inc., 201 N. Service Rd., Melville, NY 11747. www.leviton.com. This device complies with part 15 of the FCC Rules. Operation is subject to the following two conditions: (1) This device may not cause harmful interference, and (2) this device must accept any interference received, including interference that may cause undesired operation.

IC STATEMENT

This device complies with Industry Canada license-exempt RSS standard(s). Operation is subject to the following two conditions: (1) this device may not cause interference, and (2) this device must accept any interference, including interference that may cause undesired operation of the device.

RF EXPOSURE AND CO-LOCATION:

To comply with FCC OET Bulletin 65 and ISED RF exposure limits for general population and uncontrolled exposure, this device shall be installed and operated with a minimum distance of 7.9 inches (20 cm) between the radiator and your body. Also, must not be co-located or operated in conjunction with any other antenna or transmitter.

Copyright and Trademark Information

Decora Smart and Decora are registered trademarks of Leviton Manufacturing Co., Inc. Google Play, Android, App Store, Apple iOS, Google Assistant, are the trademarks of their respective owners and any use of such marks by Leviton is under license. Alexa, and related logos are trademarks of Amazon.com, Inc. or its affiliates. Wi-Fi CERTIFIED logo is a trademark of the Wi-Fi Alliance. Use herein of other third party trademarks, service marks, trade names, brand names and/or product names are for informational purposes only, are/may be the trademarks of their respective owners; such use is not meant to imply affiliation, sponsorship, or endorsement. No part of this document may be reproduced, transmitted or transcribed without the express written permission of Leviton Manufacturing Co., Inc.
Copyright 2019 Leviton Mfg. Co., Inc.

If you need help...



CALL

1-800-824-3005 (USA)

1-800-405-5320 (Canada)



ONLINE

leviton.com/decorasmart



CHAT

www.leviton.com



EMAIL

dssupport@leviton.com

Leviton Manufacturing Co., Inc.

201 North Service Road, Melville, NY 11747
Telephone: 1-800-824-3005

Visit Leviton's website at <http://www.leviton.com>
© 2019 Leviton Manufacturing Co., Inc. All rights reserved.

Specifications subject to change at any time without notice.



Documents / Resources

	<p>LEVITON Decora Smart Wi-Fi 4 Button Controller [pdf] User Guide LEVITON, Decora Smart, Wi-Fi, 4 Button, Controller</p>
--	---

[Manuals+](#).