

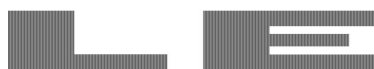


LEVITON C0945 Zigbee BLE Module Instruction Manual

[Home](#) » [Leviton](#) » LEVITON C0945 Zigbee BLE Module Instruction Manual 

Contents

- [1 LEVITON C0945 Zigbee BLE Module](#)
- [2 Module Dimensions](#)
- [3 Module Connections](#)
- [4 Module Placement](#)
- [5 Antenna](#)
- [6 Bill Of Materials](#)
- [7 Warning](#)
- [8 Documents / Resources](#)
- [9 Related Posts](#)

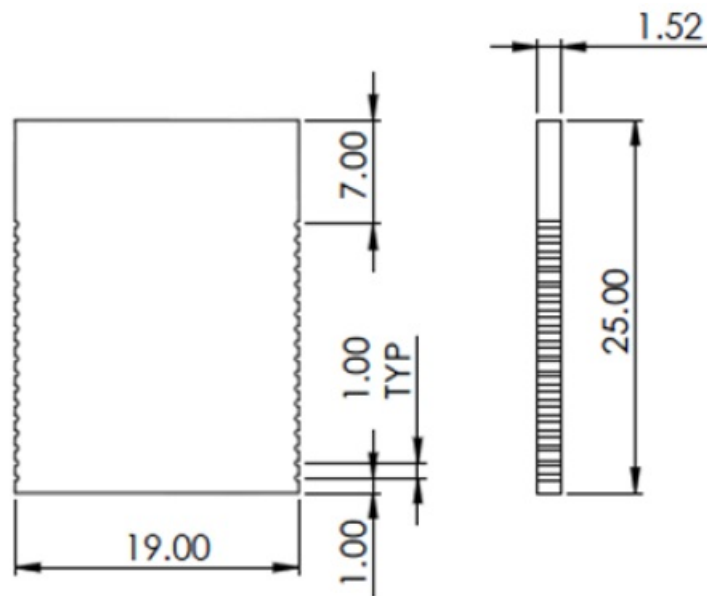


LEVITON C0945 Zigbee BLE Module



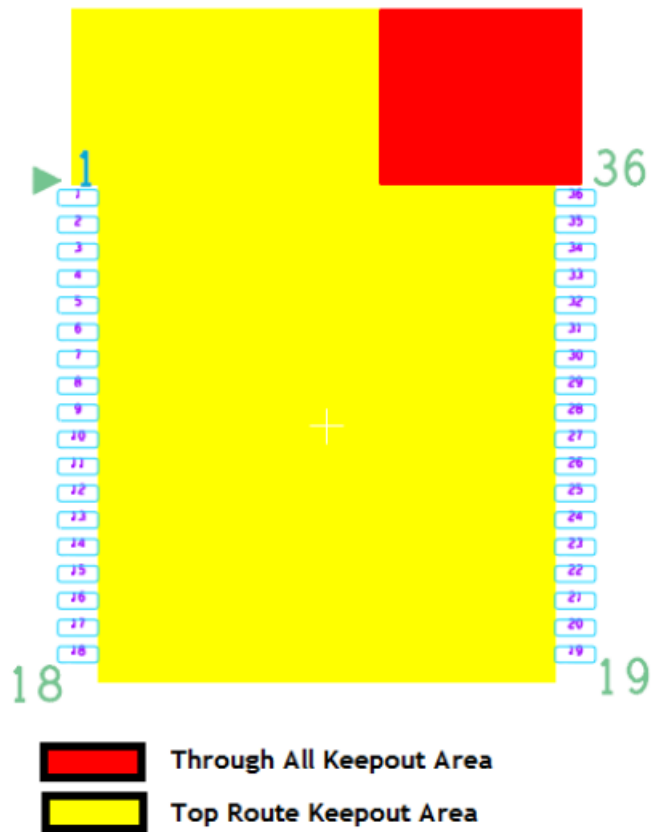
Module Dimensions

- The module is of fixed dimensions and no outside changes are permitted.
- Refer to 'B9604module.dxf' for footprint.



Module Connections

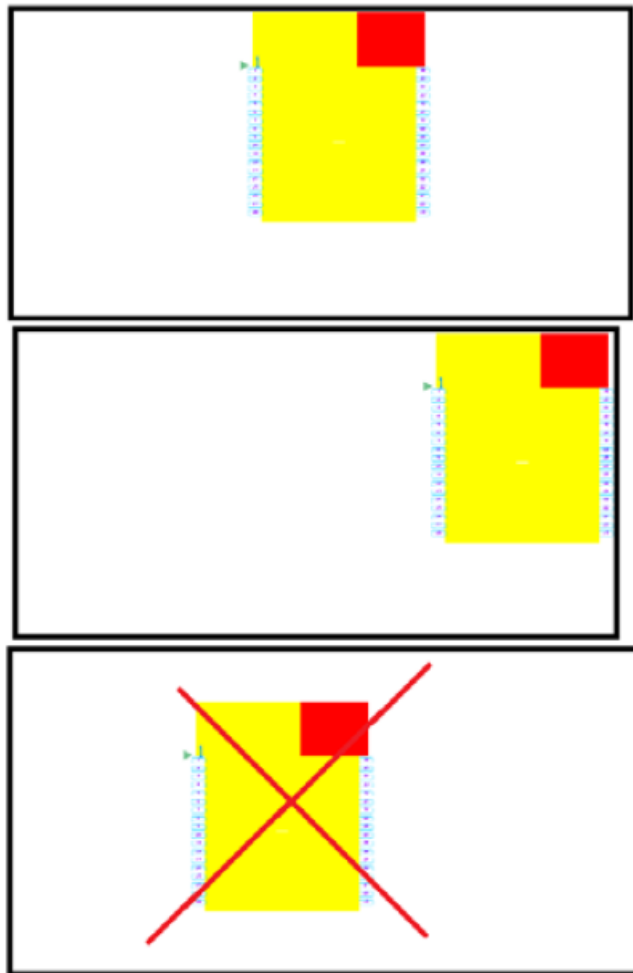
- Recommended Module land Pattern.



- Recommended placing the module along the PCB edge.
- Keep the area under the antenna clear of any copper.
- Do not put any via under the module as they may cause problems.
- Do not route traces on the PCB layer directly under the module.

Module Placement

- Recommended Module placement on host board.



Antenna


- The module comes with a chip antenna design that followed the specifications of the antenna.
- About the signal line between PCB and an antenna on the module
 - It is a 50-ohm line design.
 - Fine-tuning of return loss etc. can be performed using a matching network. However, it is required to check “Class1 change” and “Class2 change” which the authorities define then.
- The concrete contents of a check are the following two points.
 1. An antenna gain is lower than a gain given in antenna specifications.
 2. The emission level is not getting worse.
- Please refer to KDB 996369 D04 Module Integration Guide for guidance, installation instructions and testing requirements.
- Antenna trace path is shown below.

Internal Antenna	
Tuning Value	Tuning # 1
REF DES	
RF1	IND, 5.6nH, SMD, 0402
RF2	CAP, 0.4pF, SMD, 0402
RF3	CAP, 0.5pF, SMD, 0402
RF4	RES, 0R, SMD, 0402
X2	Chip Antenna

Warning

- The module comes with a chip antenna design that followed the specifications of the antenna.
- The module has fixed antenna tuning values.
- The module is intended for Leviton's use only.
- Any party involved should follow provided guidelines for the layout of the module.
- Third-party or outside customer is not allowed to change the antenna tuning values unless consulted and approved by the module manufacturer. Necessary filing and testing to be done by third party or outside customer in that case to prove regulatory compliance.

Documents / Resources

	<p>LEVITON C0945 Zigbee BLE Module [pdf] Instruction Manual ZBMG2, 2ASLN-ZBMG2, 2ASLNZBMG2, C0945 Zigbee BLE Module, C0945, Zigbee BLE Module, Zigbee BLE, BLE Module, Module, Zigbee Module</p>
---	---