

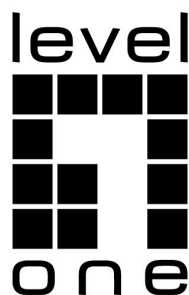


# levelone IGU-1071 Network Switch Managed L2 Plus Gigabit Ethernet Installation Guide

[Home](#) » [LevelOne](#) » levelone IGU-1071 Network Switch Managed L2 Plus Gigabit Ethernet Installation Guide 

## Contents

- [1 levelone IGU-1071 Network Switch Managed L2 Plus Gigabit Ethernet](#)
- [2 Product Information](#)
- [3 Product Usage Instructions](#)
- [4 Power connecting procedure](#)
- [5 Logging on to the equipment](#)
- [6 Explanation of symbols](#)
- [7 Safety instructions](#)
- [8 Care and cleaning](#)
- [9 Documents / Resources](#)
  - [9.1 References](#)
- [10 Related Posts](#)



levelone IGU-1071 Network Switch Managed L2 Plus Gigabit Ethernet



## Product Information

### Specifications:

- **Manufacturer:** Digital Data Communications GmbH
- **Model:** Industrial Managed Switch
- **Location:** Im Defdahl 10 F, 44141 Dortmund, Germany
- **Email Support:** [support@level1.com](mailto:support@level1.com)

## Product Usage Instructions

### Power Connecting Procedure:

If connecting outdoor IP cameras or outdoor WiFi Aps with cable, it is recommended to install an arrester on the cable between the outdoor device and the switch.

### Perform Initial Configuration:

1. Connect a PC to the switch console port using a console cable.
2. Configure the PC's serial port settings: 115200 bps, 8 characters, no parity, one stop bit, 8 data bits, and no flow control.
3. Log in to the CLI using default settings: Username admin and password admin.
4. For detailed switch configuration, refer to the CLI Reference Guide and Web Management Guide.

### Logging on to the Equipment:

1. Connect the RJ-45 interface cable of an Industrial switch to a computer using a network cable.
2. Set the TCP/IP properties of the computer based on the operating system (Windows or macOS).

### 3. Windows:

4. Click Start -> Control Panel -> Network and Internet -> Network and Sharing Center -> Change adapter settings.
5. Right-click Local connection and select Properties.
6. Double-click Internet Protocol 4 (TCP/IPv4).
7. Set the computer's IP address within the range 192.168.1.2 ~ 192.168.1.253.
8. Open a browser, enter 192.168.1.1, and log in with username admin and password admin.

### macOS:

1. Click the Apple icon, go to System Preferences -> Network.
2. Select Ethernet for wired connection and configure IPv4 as Manual.
3. Set the computer's IP address within the range 192.168.1.2 ~ 192.168.1.253 with Subnet Mask 255.255.255.0.
4. Open a browser, enter 192.168.1.1, and log in with username admin and password admin.

### Frequently Asked Questions (FAQ):

- **Q: How do I dispose of the product?**

**A:** Dispose of the product at a recycling point following WEEE guidelines. Do not dispose of it with household waste to prevent harm to the environment or injury.

- **Q: What should I do before connecting the product to avoid damage?**

**A:** Allow the product to reach room temperature to prevent condensation formation that may lead to irreparable damage. This may take several hours.

### Quick Installation Guide

( Industrial Managed Switches )

This Quick Installation Guide only describes the most basic situations and settings. All detailed information is described in the user manual.

- Digital Data Communications GmbH
- Im Defdahl 10 F, 44141 Dortmund, Germany
- Email: [support@level1.com](mailto:support@level1.com)

### Power connecting procedure

Requirement: For operation, a DC Industrial Power Supply is needed (sold separately)

- STEP 1 – Pull out Power Terminal Block.
- STEP 2 – Connect wire to PWR1+, PWR1-, or PWR2+, PWR2-, and Ground the neutral wire to the ground screw.
- STEP 3 – Plug back Power Terminal Block to its place.

**Note:** The Industrial switch is an indoor device. If you need to use it to connect outdoor devices such as outdoor IP cameras or outdoor WiFi Aps with cable, then you need to install an arrester on the cable between outdoor device and the switch.

## Perform Initial Configuration

- Connect PC to the switch console port using console cable.
- Configure the PC's serial port: 115200 bps, 8 characters, no parity, one stop bit, 8 data bits, and no flow control.
- Log in to the CLI using default settings: Username "admin" and password "admin."

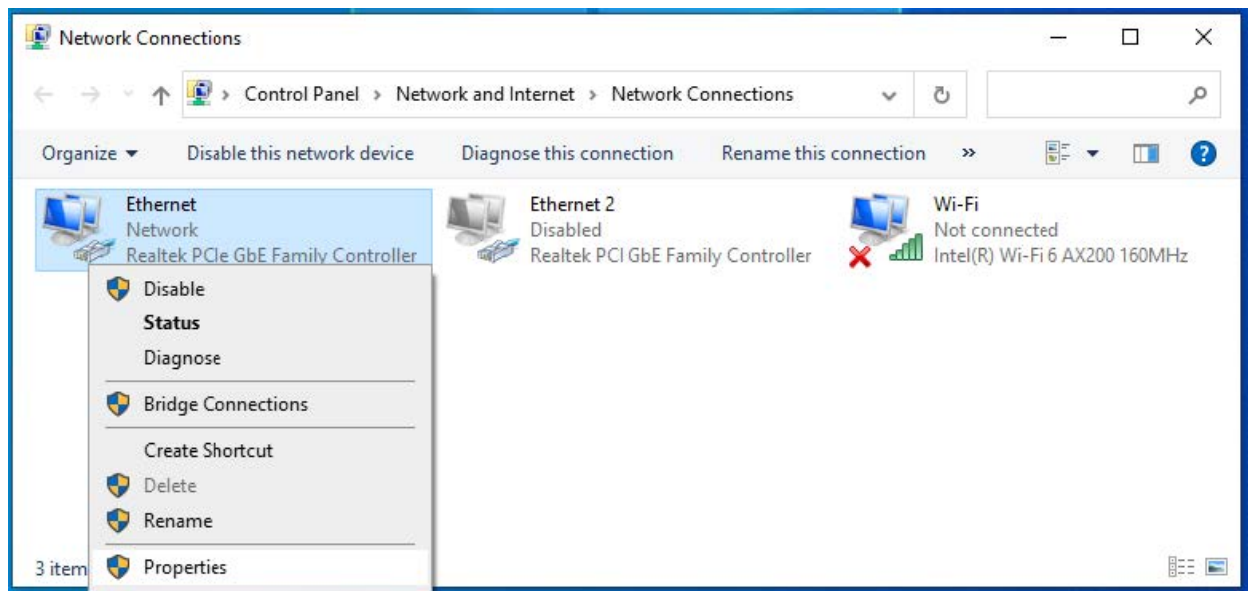
**Note:** For further information on switch configuration, refer to the CLI Reference Guide and Web Management Guide.

## Logging on to the equipment

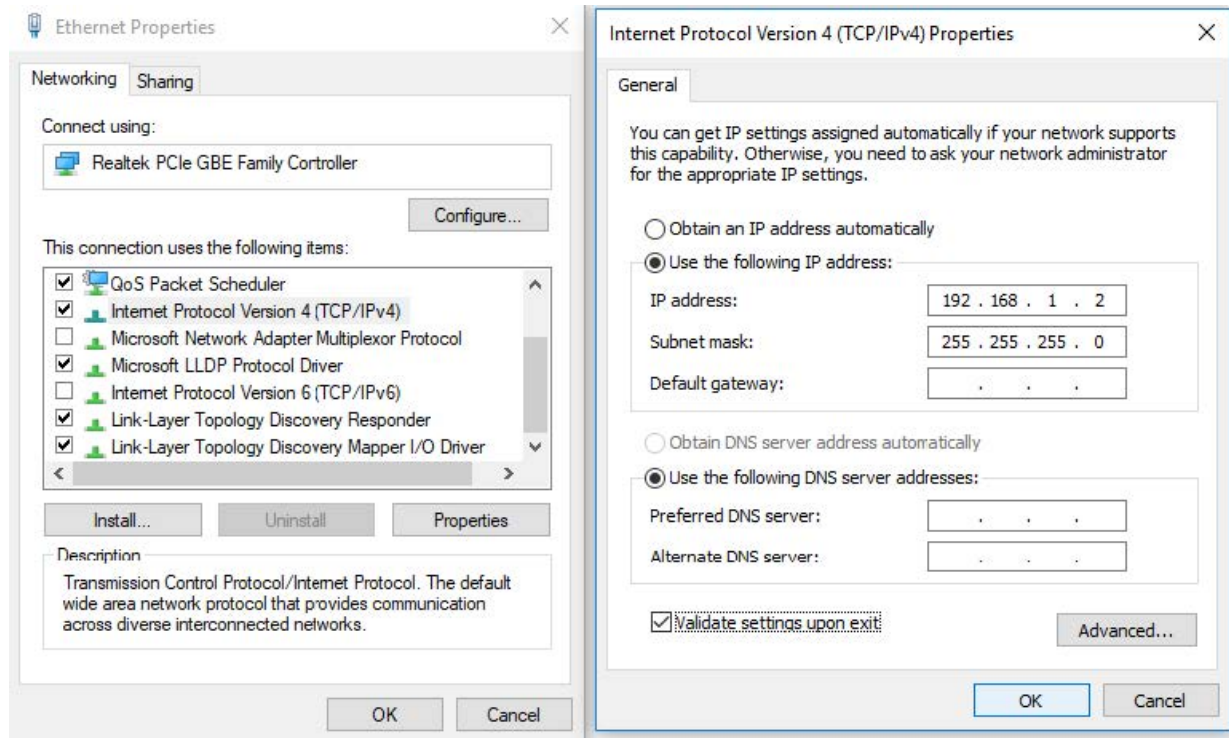
- Connect the RJ-45 interface cable of a Industrial switch with a computer using a network cable.
- Set the TCP/IP properties of the computer.

## Windows

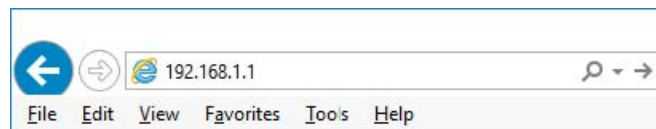
1. Click Start—> Control Panel—> Network and Internet—> Network and Sharing Center—> Change adapter settings, right click Local connection and select Properties.



2. Double-click Internet Protocol 4 (TCP/IPv4)
3. Set the computer's IP address: The computer's IP address should be any one of the following free IP addresses 192.168.1.2 ~ 192.168.1.253, and then click OK, to return to the previous page, click OK.

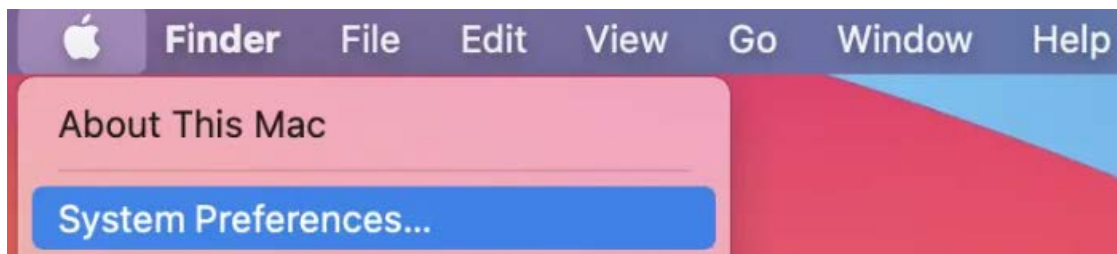


4. Logging on to the equipment: Open a browser and type 192.168.1.1 in the address bar, and then press Enter; in the pop-up login interface, enter the factory logon username “admin”, password “admin” and click OK.

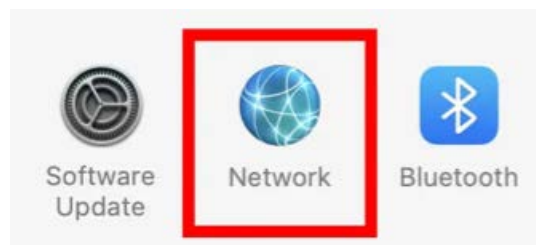


## macOS

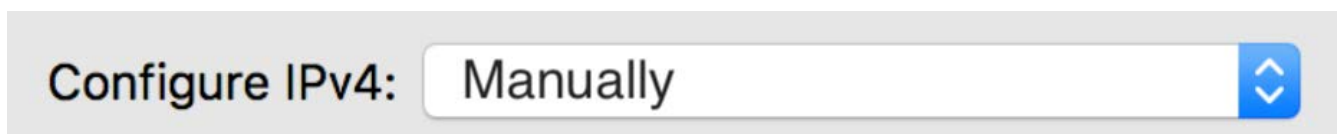
1. Click the Apple icon, from the Apple drop-down list, select System Preferences.



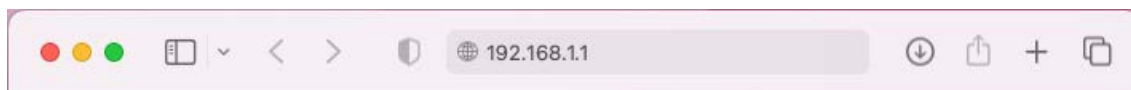
2. Click the Network icon.



3. Select the Ethernet (for wired connection), from the Configure IPv4 drop-down list, select Manually.



4. Set the computer's IP address: The computer's IP address should be any one of the following free IP addresses 192.168.1.2 ~ 192.168.1.253, Subnet Mask 255.255.255.0, and then click Apply.
5. Logging on to the equipment: Open a browser and type 192.168.1.1 in the address bar, and then press Enter; in the pop-up login interface, enter the factory logon username “admin”, password “admin” and click OK.



## Explanation of symbols

The symbol with the exclamation mark in the triangle is used to indicate important information in these operating instructions. Always read this information carefully.



### **Disposal**

WEEE: Dispose the product at a recycling point. Do not dispose together with household waste. Incorrect storage/disposal can harm the environment and/or cause injury.

## Safety instructions

Read the operating instructions carefully and especially observe the safety information. If you do not follow the safety instructions and information on proper handling in this manual, we assume no liability for any resulting personal injury or damage to property. Such cases will invalidate the warranty/ guarantee.

## General information

- The device is not a toy. Keep it out of the reach of children and pets.
- Do not leave the packaging material lying around carelessly. This may become dangerous playing material for children.
- Protect the appliance from extreme temperatures, direct sunlight, strong jolts, high humidity, moisture, flammable gases, steam, and solvents.
- Do not place the product under any mechanical stress.
- If it is no longer possible to operate the product safely, take it out of operation and protect it from any accidental use. Safe operation can no longer be guaranteed if the product:
  - is visibly damaged,
  - is no longer working properly,
  - has been stored for extended periods in poor ambient conditions or
  - has been subjected to any serious transport-related stress.
- Please handle the product carefully. Jolts, impacts, or a fall, even from a low height, can cause damage to the product.
- Consult an expert when in doubt about the operation, safety, or connection of the appliance.
- Maintenance, modifications, and repairs must only be completed by a technician or an authorized repair center.
- If you have questions that remain unanswered by these operating instructions, contact our technical support service or other technical personnel.


## People and product

Never use the product immediately after it has been brought from a cold room into a warm one. This can cause condensation to form, which may lead to irreparable damage. Allow the product to reach room temperature before connecting it and putting it to use. This may take several hours.

## Care and cleaning

- Disconnect the product from the mains before cleaning.
- Do not use any aggressive cleaning agents, rubbing alcohol, or other chemical solutions as they can cause damage to the housing and functioning of the product.
- Clean the product with a dry, fiber-free cloth.

**Documents / Resources**

<div><div>Quick Installation Guide</div><div>(Industrial Managed Switches)</div><div></div></div>	<div><a href="#">levelone IGU-1071 Network Switch Managed L2 Plus Gigabit Ethernet</a> [pdf] Installation Guide</div> <div>IGU-1071 Network Switch Managed L2 Plus Gigabit Ethernet, IGU-1071, Network Switch Managed L2 Plus Gigabit Ethernet, Switch Managed L2 Plus Gigabit Ethernet, L2 Plus Gigabit Ethernet, Gigabit Ethernet, Ethernet</div>
--	---

**References**

- [User Manual](#)

[Manuals+](#), [Privacy Policy](#)

This website is an independent publication and is neither affiliated with nor endorsed by any of the trademark owners. The "Bluetooth®" word mark and logos are registered trademarks owned by Bluetooth SIG, Inc. The "Wi-Fi®" word mark and logos are registered trademarks owned by the Wi-Fi Alliance. Any use of these marks on this website does not imply any affiliation with or endorsement.