

LevelOne IGS-2110P Managed L2 Gigabit Ethernet Power over Ethernet Switch



LevelOne IGS-2110P Managed L2 Gigabit Ethernet Power over Ethernet Switch Installation Guide

[Home](#) » [LevelOne](#) » LevelOne IGS-2110P Managed L2 Gigabit Ethernet Power over Ethernet Switch Installation Guide 

Contents

- 1 LevelOne IGS-2110P Managed L2 Gigabit Ethernet Power over Ethernet Switch
- 2 Product Information
- 3 Product Usage Instructions
- 4 Power connecting procedure
- 5 Explanation of symbols
- 6 Safety instructions
- 7 Care and cleaning
- 8 Documents / Resources
 - 8.1 References
- 9 Related Posts

LevelOne-LOGO

LevelOne IGS-2110P Managed L2 Gigabit Ethernet Power over Ethernet Switch



Product Information

Specifications

- Brand: Hilbert Industrial
- Model: Smart Lite Switches

- Manufacturer: Digital Data Communications GmbH
- Power Supply: DC Industrial Power Supply (Sold Separately)
- Location: Indoor use only
- Compatibility: Windows and macOS

Product Usage Instructions

Power Connecting Procedure

Note: DC Industrial Power Supply needs to be purchased separately.

Logging on to the Equipment

- Connect the RJ-45 interface cable of the Industrial switch to a computer using a network cable.
- Set the TCP/IP properties of the computer based on the operating system.

For Windows:

- Click Start → Control Panel → Network and Internet → Network and Sharing Center → Change adapter settings, right-click Local connection and select Properties.
- Double-click Internet Protocol 4 (TCP/IPv4).
- Set the computer's IP address to any free IP address in the range 192.168.1.2 ~ 192.168.1.253.
- Open a browser, type 192.168.1.1 in the address bar, enter factory login username 'admin', password 'admin' and click OK.

• For macOS:

1. Click the Apple icon, select System Preferences, then click on the Network icon.
2. Select Ethernet, set the IP address to any free IP address in the range 192.168.1.2 ~ 192.168.1.253 with Subnet Mask 255.255.255.0.
3. Open a browser, type 192.168.1.1 in the address bar, enter factory login username 'admin', password 'admin' and click OK.

Running the Application

1. Download and launch the LevelOne IP Locator software from <http://level1.info/iplocator>.
2. Run the LevelOne IP Locator.exe application.
3. The utility will search for all Hilbert series switches on the network.
4. Select a device's IP address for configuration, enter factory username 'admin' and password 'admin', then click Sign in.
5. You can instantly set IP address and other configurations from the settings box.

FAQ

• Explanation of Symbols

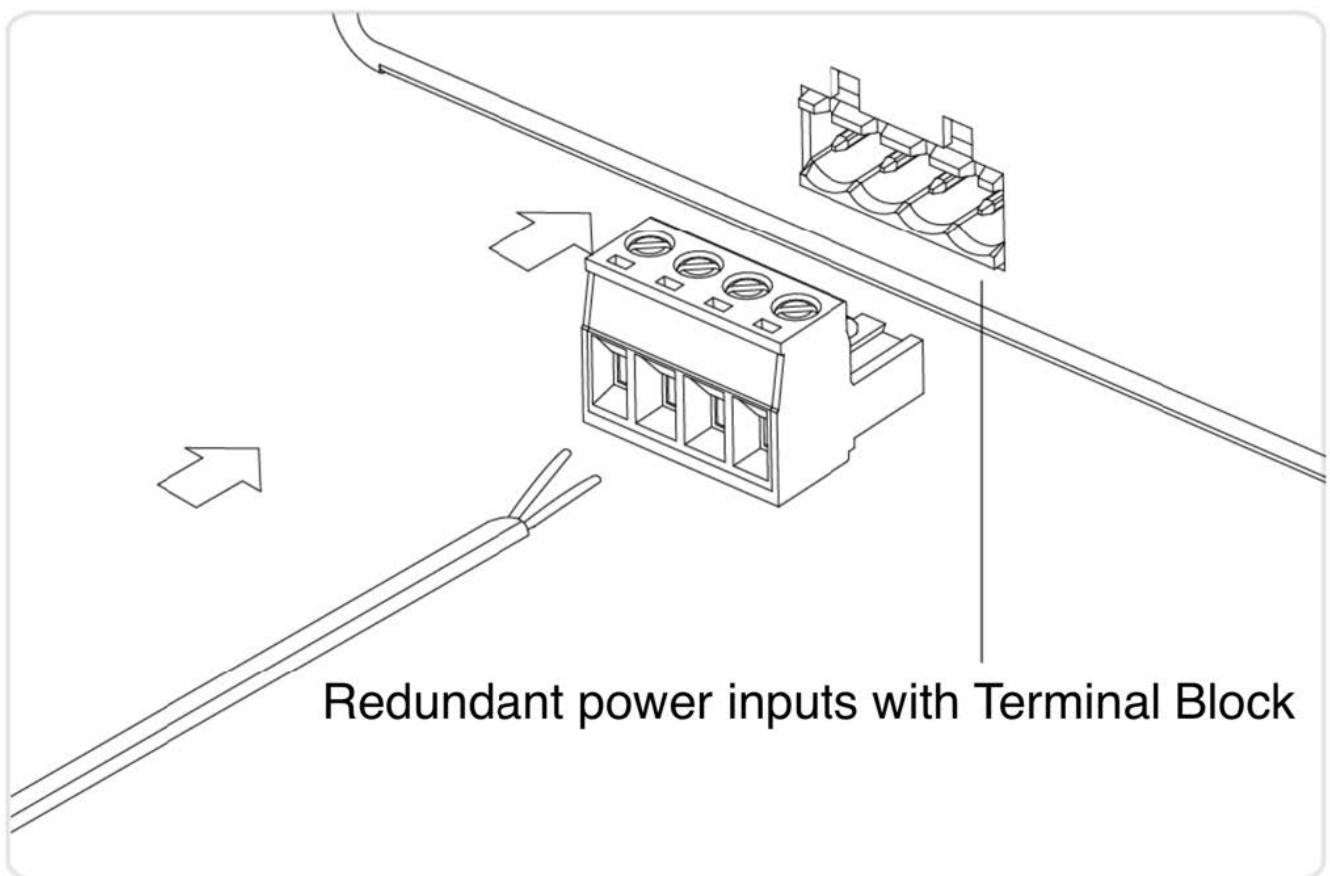
The symbol with the exclamation mark in the triangle indicates important information in the operating instructions. Always read this information carefully.

This Quick Installation Guide only describes the most basic situations and settings. All detailed information is described in the user manual.

- Digital Data Communications GmbH
Im Defdahl 10 F, 44141 Dortmund, Germany
- Email : support@level1.com

Power connecting procedure

- Requirement: For operation, a DC Industrial Power Supply is needed (sold separately)
- STEP 1 – Pull out 4 pin terminal block.
- STEP 2 – Connect wire to V1+, V1-, or V2+, V2-, and Ground the neutral wire to the ground screw.
- STEP 3 – Plug back 4 pin terminal block to its place.



- **Note:** DC Industrial Power Supply Sold Separately

Logging on to the equipment

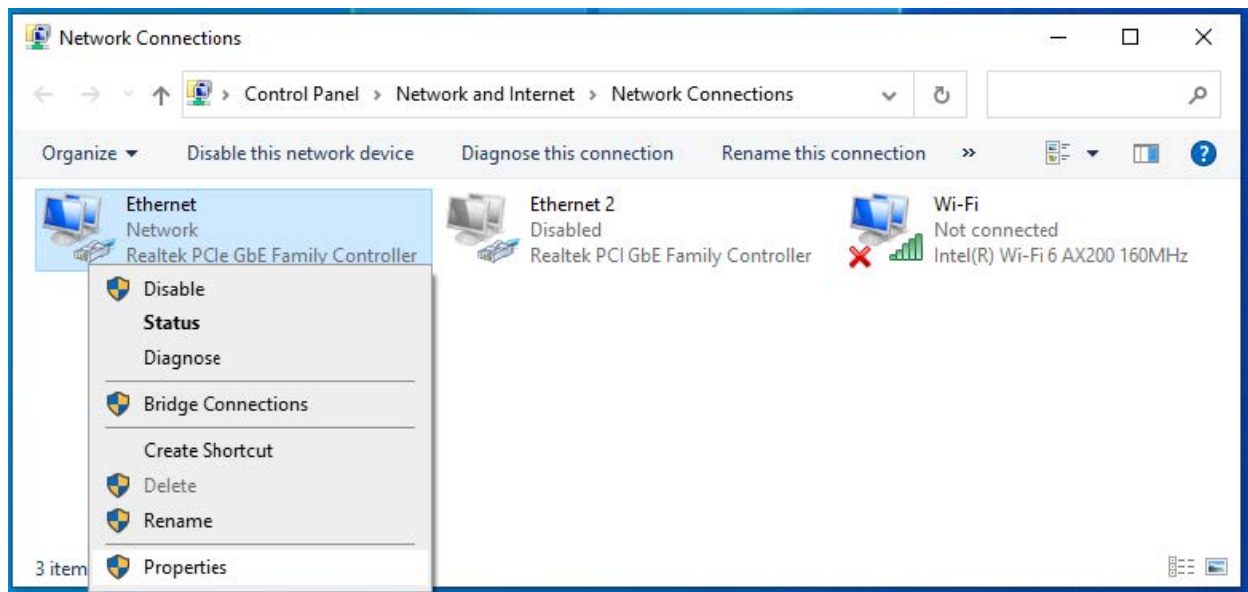
- Connect the RJ-45 interface cable of a Industrial switch with a computer using a network cable.
-



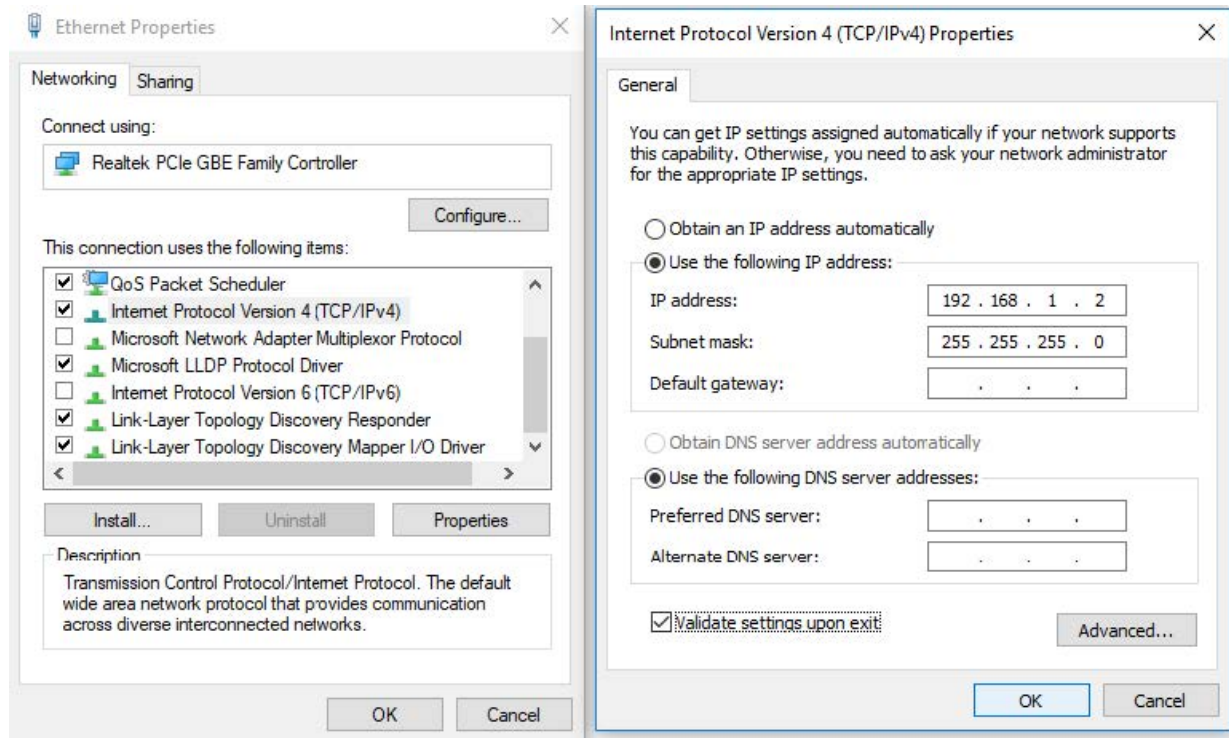
- **Note:** The Industrial switch is an indoor device. If you need to use it to connect outdoor devices such as outdoor IP cameras or outdoor WiFi Aps with cable, then you need to install an arrester on the cable between outdoor device and the switch.
- Set the TCP/IP properties of the computer.

Windows

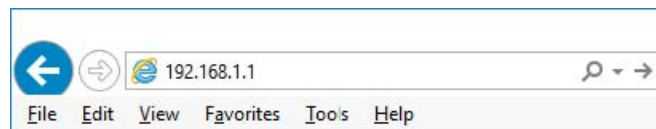
1. Click Start—> Control Panel—> Network and Internet—> Network and Sharing Center—> Change adapter settings, right click Local connection and select Properties.



2. Double-click Internet Protocol 4 (TCP/IPv4)
3. Set the computer's IP address: The computer's IP address should be any one of the following free IP addresses 192.168.1.2 ~ 192.168.1.253, and then click OK, to return to the previous page, click OK.

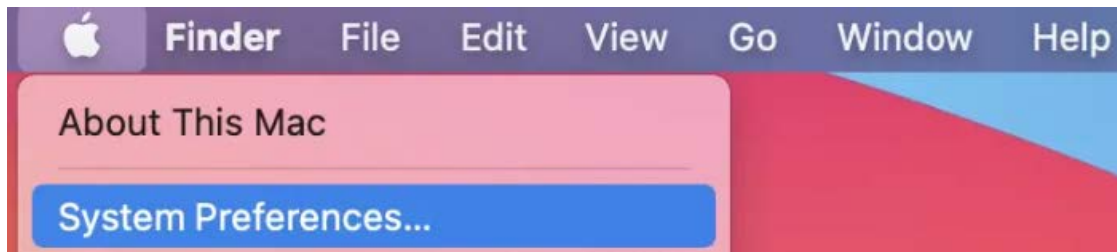


4. Logging on to the equipment: Open a browser and type 192.168.1.1 in the address bar, and then press Enter; in the pop-up login interface, enter the factory logon username “admin”, password “admin” and click OK.

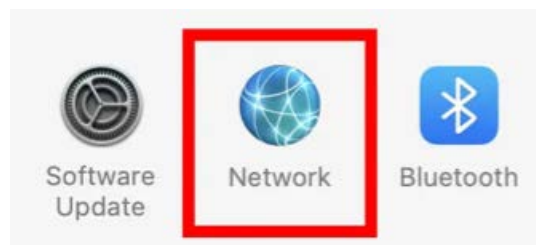


macOS

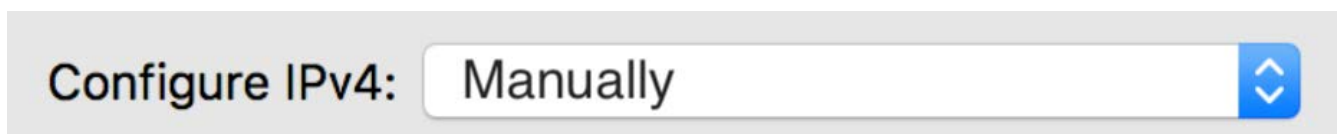
1. Click the Apple icon, from the Apple drop-down list, select System Preferences.



2. Click the Network icon.



3. select the Ethernet (for wired connection), from the Configure IPv4 drop-down list, select Manually.



4. Set the computer's IP address: The computer's IP address should be any one of the following free IP addresses 192.168.1.2 ~ 192.168.1.253, Subnet Mask 255.255.255.0, and then click Apply.
5. Logging on to the equipment: Open a browser and type 192.168.1.1 in the address bar, and then press Enter; in the pop-up login interface, enter the factory logon username “admin”, password “admin” and click OK.



Running the Application

Can be matched with the latest LevelOne IP Locator, the software is the easiest to use switch discovery tool, it can search all Hilbert series switches, instantly know the forgotten IP and other info. Compatible with mainstream Windows and Mac operating systems.

1. Scan the Setup code, download the LevelOne IP Locator and launch it.

<http://level1.info/iplocator>



2. Execute the application "LevelOne IP Locator.exe".



3. The LevelOne IP Locator Utility will search all Hilbert series switches based on the connect network interface card (NIC), instantly know the forgotten IP address and other info.


Index	Device name	Model number	Version	IP Address	Netmask	Gateway	MAC
1	Customizable name 1	IGS-2106	v04.00	192.168.1.1 (Static IP)	255.255.255.0	192.168.1.254	00:11:6B:80:00:00
2	Customizable name 2	IGS-2110P	v04.00	192.168.1.3 (Static IP)	255.255.255.0	192.168.1.254	00:11:6B:80:00:00

first page previous page page 1 of 1 next page last page ItemsPerPage 60 load clearload save

4. Simply click with the mouse on the device's IP address in the device list for configuration. On the displayed login screen, enter the factory username "admin" and password "admin", then click "Sign in".

LevelOne IP Locator-2.7

Index	Device name	Model number	Version	IP Address	Netmask	Gateway	MAC	
1	Customizable name 1	IGS-2106	...	v04.00	192.168.1.1 (Static IP)	255.255.255.0	192.168.1.254	00:11:6B:...
2	Customizable name 2	IGS-2110P	...	v04.00	192.168.1.3 (Static IP)	255.255.255.0	192.168.1.254	00:11:6B:...



Username

Password

first page previous page page 1 of 1 next page last page ItemsPerPage 60

5. A settings box will appear, can instantly set IP address and other info.

LevelOne IP Locator-2.7

Index	Device name	Model number	Version	IP Address	Netmask	Gateway	MAC	
1	Customizable name 1	IGS-2106	...	v04.00	192.168.1.1 (Static IP)	255.255.255.0	192.168.1.254	00:11:6B:...
2	Customizable name 2	IGS-2110P	...	v04.00	192.168.1.3 (Static IP)	255.255.255.0	192.168.1.254	00:11:6B:...

modify allocation

Version

model_number

MAC

device_name

IP Address

Netmask

Gateway

first page previous page page 1 of 1 next page last page ItemsPerPage 60

Explanation of symbols

- The symbol with the exclamation mark in the triangle is used to indicate important information in these operating instructions. Always read this information carefully.



- **Disposal**

WEEE: Dispose the product at a recycling point. Do not dispose together with household waste. Incorrect storage/disposal can harm the environment and/or cause injury.

Safety instructions

Read the operating instructions carefully and especially observe the safety information. If you do not follow the safety instructions and information on proper handling in this manual, we assume no liability for any resulting personal injury or damage to property. Such cases will invalidate the warranty/ guarantee.

General information


- The device is not a toy. Keep it out of the reach of children and pets.
- Do not leave the packaging material lying around carelessly. This may become dangerous playing material for children.
- Protect the appliance from extreme temperatures, direct sunlight, strong jolts, high humidity, moisture, flammable gases, steam, and solvents.
- Do not place the product under any mechanical stress.
- If it is no longer possible to operate the product safely, take it out of operation and protect it from any accidental use. Safe operation can no longer be guaranteed if the product:
 - is visibly damaged,
 - is no longer working properly,
 - has been stored for extended periods in poor ambient conditions or
 - has been subjected to any serious transport-related stress.
- Please handle the product carefully. Jolts, impacts, or a fall, even from a low height, can cause damage to the product.
- Consult an expert when in doubt about the operation, safety, or connection of the appliance.
- Maintenance, modifications, and repairs must only be completed by a technician or an authorized repair center.
- If you have questions that remain unanswered by these operating instructions, contact our technical support service or other technical personnel.

People and product

- Never use the product immediately after it has been brought from a cold room into a warm one. This can cause condensation to form, which may lead to irreparable damage. Allow the product to reach room temperature before connecting it and putting it to use. This may take several hours.

Care and cleaning

- Disconnect the product from the mains before cleaning.
- Do not use any aggressive cleaning agents, rubbing alcohol, or other chemical solutions as they can cause damage to the housing and functioning of the product.
- Clean the product with a dry, fiber-free cloth.

<div><div>Quick Installation Guide</div><div>(Hibert Industrial Smart Lite Switches)</div><div></div></div>	<div><div>LevelOne IGS-2110P Managed L2 Gigabit Ethernet Power over Ethernet Switch [pdf] Installation Guide</div><div>IGS-2110P Managed L2 Gigabit Ethernet Power over Ethernet Switch, IGS-2110P, Managed L2 Gigabit Ethernet Power over Ethernet Switch, Gigabit Ethernet Power over Ethernet Switch, Power over Ethernet Switch, over Ethernet Switch, Ethernet Switch, Switch</div></div>
--	--

References

- [level1.info/iplocator](#)
- [User Manual](#)

[Manuals+](#), [Privacy Policy](#)

This website is an independent publication and is neither affiliated with nor endorsed by any of the trademark owners. The "Bluetooth®" word mark and logos are registered trademarks owned by Bluetooth SIG, Inc. The "Wi-Fi®" word mark and logos are registered trademarks owned by the Wi-Fi Alliance. Any use of these marks on this website does not imply any affiliation with or endorsement.