



[Home](#) » [LevelOne](#) » **LevelOne AP-1 Ceiling Wireless Access Points Installation Guide** 

Contents [[hide](#)]

- [1 LevelOne AP-1 Ceiling Wireless Access Points](#)
- [2 Product introduction](#)
- [3 Operation environment](#)
- [4 Device installation](#)
- [5 Device connection](#)
- [6 Device management](#)
- [7 Use mobile phone to login](#)
- [8 Device management](#)
- [9 FCC Warning Statement](#)
- [10 FAQ and Solutions](#)
- [11 Documents / Resources](#)
 - [11.1 References](#)

LevelOne

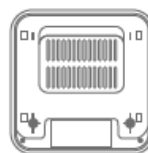
LevelOne AP-1 Ceiling Wireless Access Points



Product introduction



Front

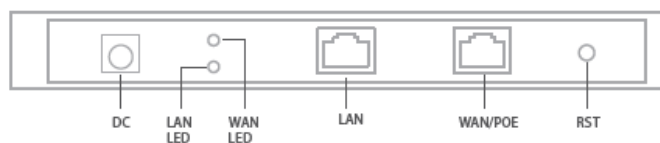


Back

One LED Indicator	Designation	Normal Status	Explanation
	SYSTEM/WIFI LED	Green Light	System boots up successfully
		Blue light	WIFI boots up successfully
Three LED Indicator	Designation	Normal Status	Explanation
	SYSTEM LED	Bright	System boots up successfully
		Flashing	System reset default
	2.4G LED	Flashing	2.4G Wireless boots up successfully
	5G LED	Flashing	5G Wireless boots up successfully

*The number of LEDs for different models of ceiling mount AP will be different, please refer to the actual product.

Ports Definition



Ports & Buttons	Explanation
DC Socket	Power input port
LED Indicator	LED indicator will bright up when Ethernet cable is connected to WAN/LAN ports
Reset Button	Reset device to factory default settings, press it for 10 seconds when powered on, device will reboot
WAN Port	Connect to internet through ADSL modem or FTTH broadband. Under AP and repeater mode, WAN port will be changed to LAN port
LAN Port	LAN port can connect LAN device

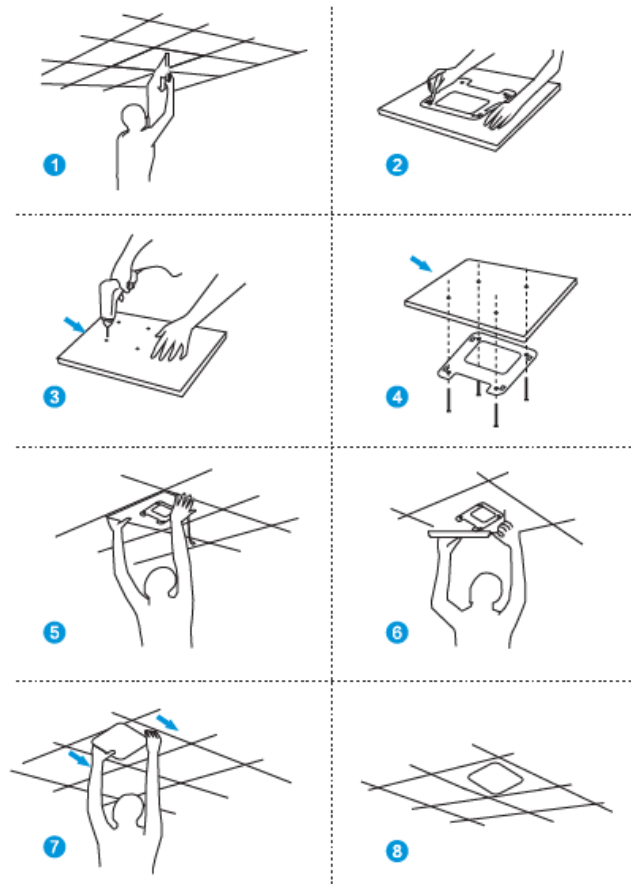
* The interface for different models of products may be different, the above diagram is only for reference , pls refer to the actual product !

Operation environment

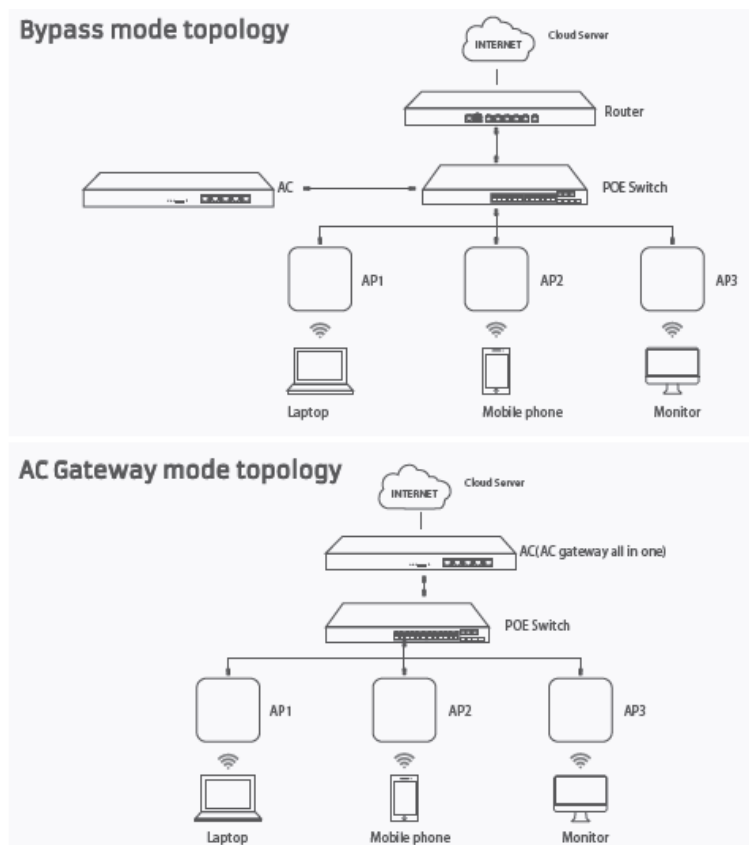
Suitable for safe use in areas below 2000 meters above sea level

Only Suitable for safe use in non-tropical climatic conditions.

Device installation



Device connection



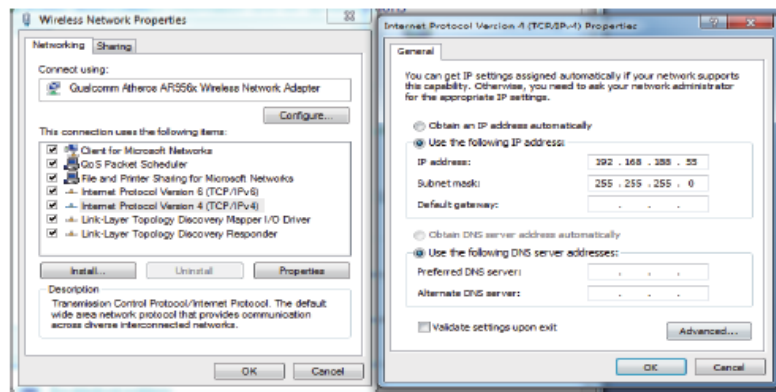
Tips: If the AP supports 24V POE, pls use 24V PoE switch or POE adapter; if the AP is a standard 48V POE device, please use a standard IEEE802.3at POE switch or POE adapter. When deploy a large wireless network, there are many APs in this network, it is recommended to use a wireless AC controller in the network to centrally manage all APs in the network.

Device management

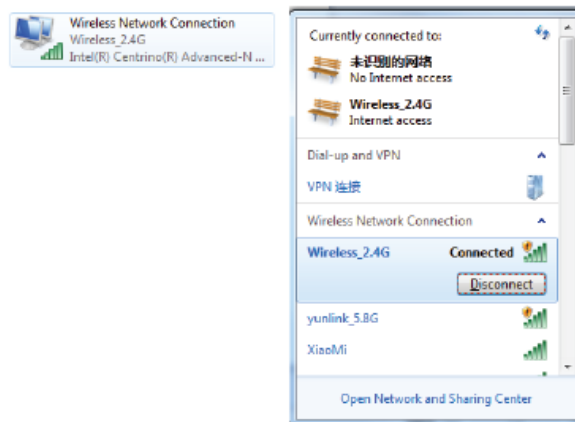
Management from WEB UI

Connect PC by wireless

1. To connect an AP wirelessly, you need set the IP address of the TCP/IP properties of the wireless network card to 192.168.188.X (X is number range of 2-252) first, so that the AP and PC in the same IP segment, and set the subnet mask to 255.255.255.0, as shown in the following picture:

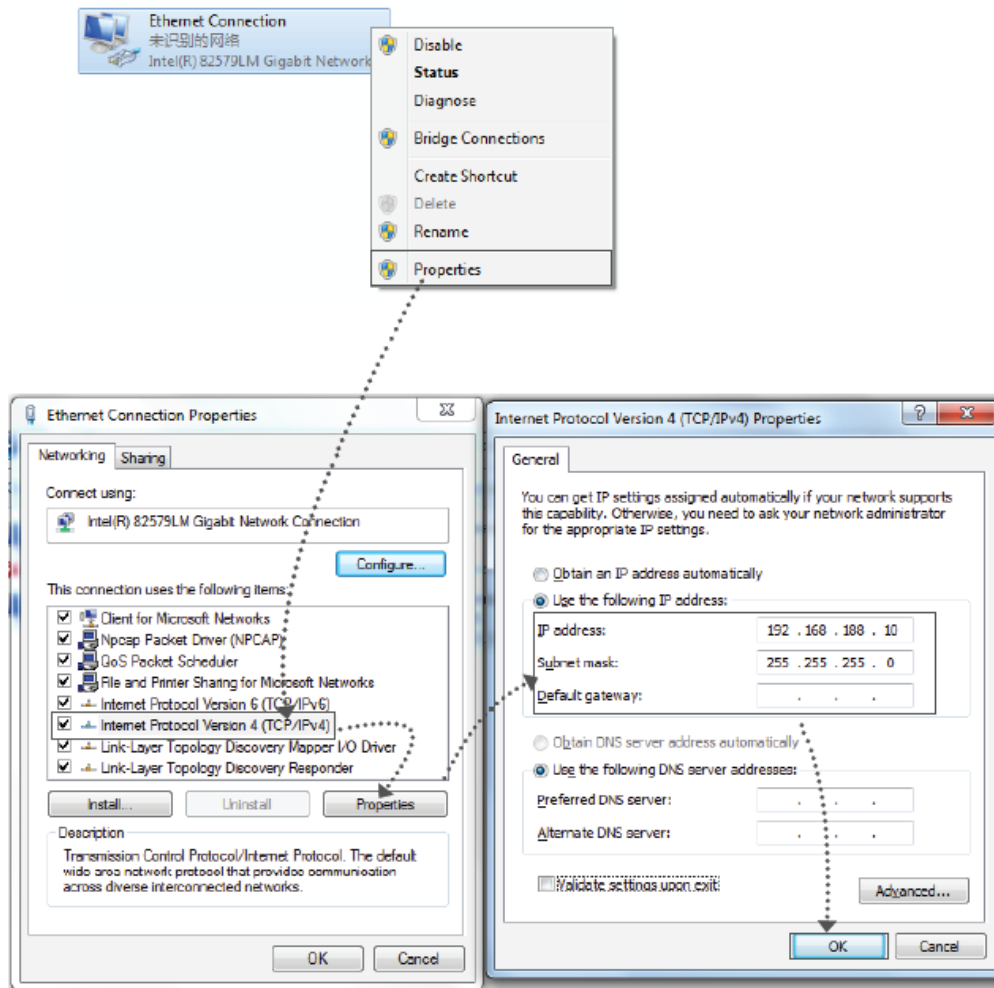


2. After setting the IP address of PC, connect PC with AP in wireless, double-click “Wireless network Connection”, in the pop-up wireless SSID list, select “Wireless 2.4G”, click “Connect”, then enter the password in the pop-up password dialogue box, the default password is “66666666”, click “OK” to connect.



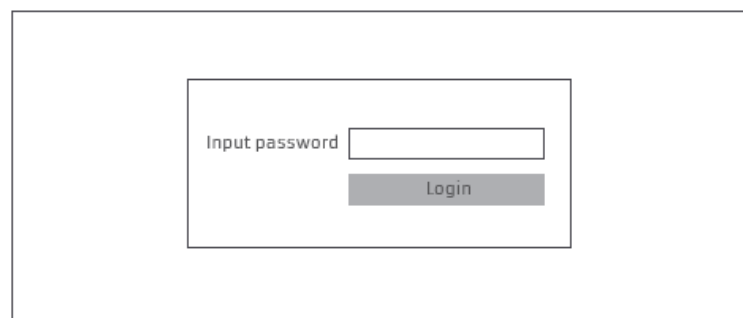
Connect PC by wired port

Using the wired connection, set the IP address of the TCP/IP properties of the wired network card to 192.168.188.X (X is number range of 2-252), and the PC will be the same IP segment as AP.



AP mode

1. Use Internet Explorer to visit <http://192.168.188.253>, pop up the login dialogue box shown in 3. In FAT AP mode user interface home page is as shown below: in the following picture, input the default login password: admin, then press “Login” to enter the wireless AP’s management user interface page.



2. By default it is in Fit AP mode, users need click the button at the right corner to change it to FAT AP mode if needed.

Fit AP

Information

IP Address

192.168.188.253

Subnet

255.255.255.0

Mac Address

44:D1:FA:75:BF:3F

Gateway

192.168.188.1

AC Address

172.16.0.1

Settings

IP Mode

DHCP

Apply

Reset

Reboot

3. Setup Wizard page,choose AP mode as the current working mode

Home

Wizard

WIFI

Network

Manage

Operation Mode

AP Mode

Fit AP

Flow(2G Wifi)bps

Uptime 01:05:39

Device Information

CPU Usage 1%

Memory Usage 20%

Device Description

Click Settings

LAN Information

IP Mode

Get IP From AC

Lan IP

192.168.188.253

Subnet

255.255.255.0

AC Address

172.16.0.1

MAC Address

44:D1:FA:75:BF:3F

WIFI Information

Status

ON

SSID

Wireless-2.4G

Channel

11

Encrypt

Open

MAC Address

44:D1:FA:75:BF:41

Home

Wizard

WIFI

Network

Manage

Gateway

Repeater Mode

WISP Mode

Current Mode

AP Mode

In this mode the AP wireless interface and cable interface are bridging together. Without NAT, firewall and all network related functions.

4. Enter AP Mode setup page,choose "Get IP from AC" in connection type, click Next

5. Enter Wifi setup page,set up SSID, Channel, Encryption parameters as shown below:

6. Click Next and setup completed

AP Mode

① ————— ② ————— ✓

LAN Settings

IP Mode: Get IP From AC

Static IP

Get IP From AC

Get IP From Gateway

Next

AP Mode

① ————— ② ————— ✓

2G WIFI Setting

Wifi Status: ☐

SSID: Wireless2.4G

Hide your SSID?: ☐

Channel: 20M Auto

Encrypt: Open

Timing: 1 Day

Back Next

AP Mode

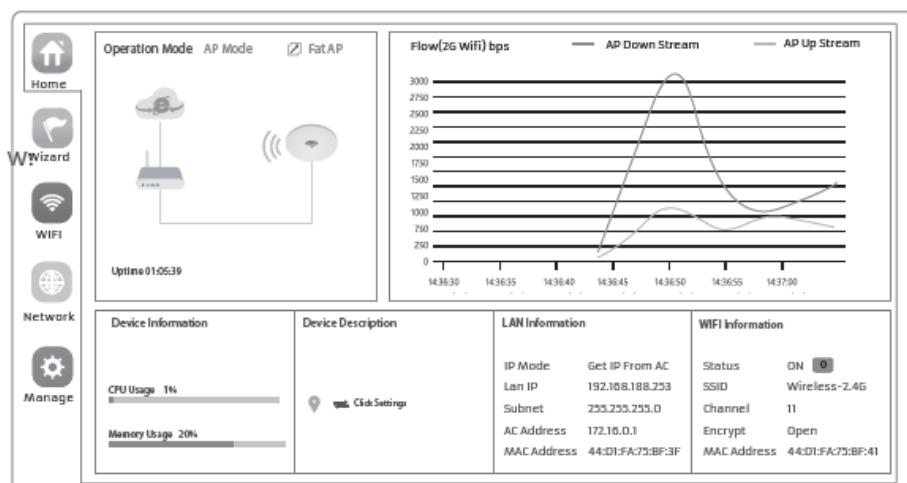
① ————— ② ————— ✓

Have completed your configuration !

Internet connection and status view

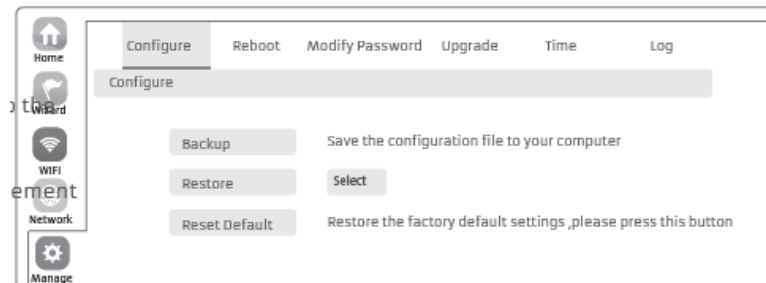
IP settings: After the configuration is completed, the wireless AP will restart and enter the Operation Mode you set. Then change the IP address of your computer to Obtain an IP address automatically, computer and other wireless devices can connect to the AP for Internet access.

View status: Manually set a fixed IP address for your computer to 192.168.188.X (X is WIFI number range of 2-252) , then login the wireless AP by its IP address to enter the management user interface and view it status, as shown in the following picture.



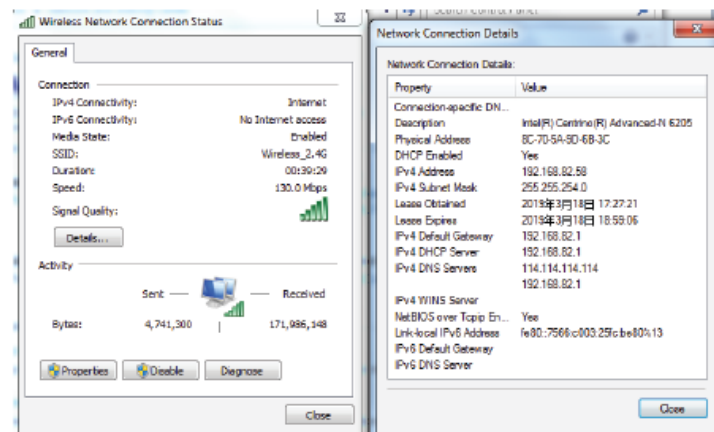
Device Management

Users can backup, reboot and reset to factory default settings through device management menu options. Also you can modify the WEB login password, upgrade firmware, time synchronization and system log statistics and other functional settings as shown in picture below.

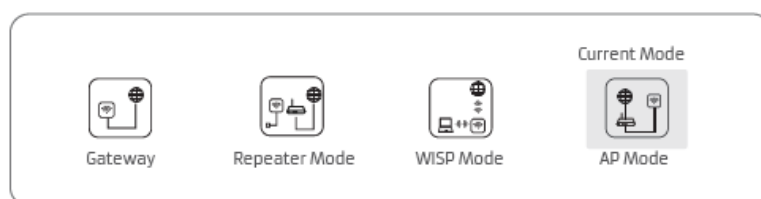


Wireless testing

1. Use Laptop or mobile phone to test whether the wireless network can surf the Internet: click wireless network , select the wireless SSID, enter the password to connect the wireless AP, test whether you can surf the Internet.
2. Check the status of the wireless network connection: signal quality, speed, Bytes sent and received. Click on Details, check if the IP address and DNS server address etc. obtained correctly, confirm that the device is working properly.



Other mode



1. Gateway Mode

Realize router function, WAN port connect with modem (ADSL or Fiber) , or WAN port connect internet by dynamic or static IP type.

2. Repeater mode

Realize wireless bridge and forwarding without compatibility matching with the upper device.

3. WISP Mode

Wireless ISP clients connect to the wireless base station by wireless, to realize local LAN internet connection sharing.

4. AP mode

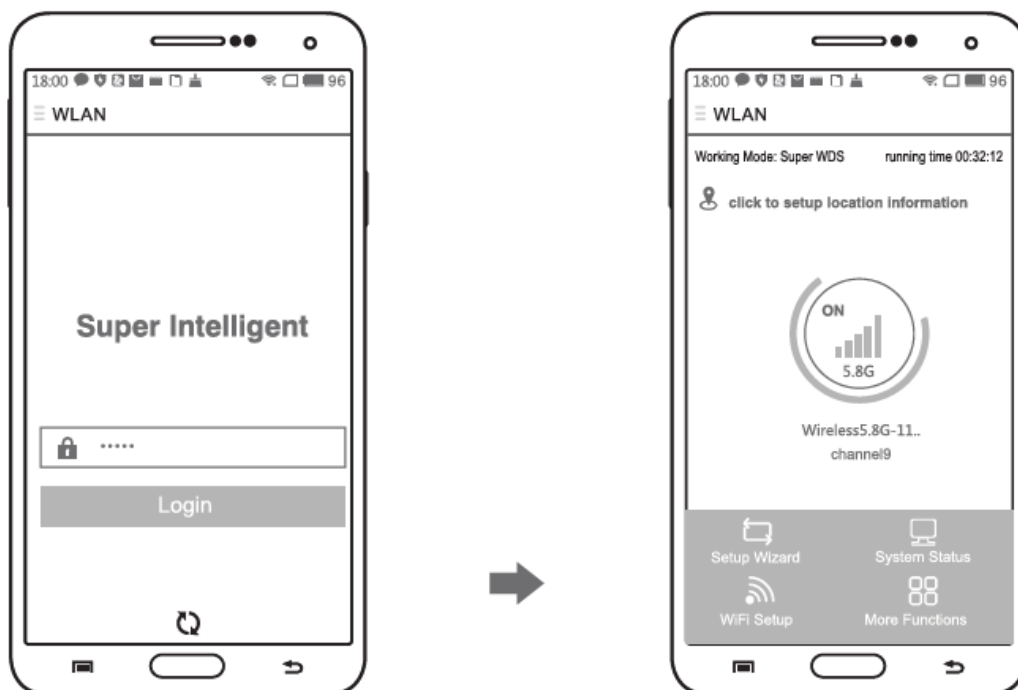
Under AP mode, NAT, DHCP, firewall, and all WAN related functions are turned off, all wireless and wired interfaces are bridged together, no distinguishing Operation mode setupshing between LAN and WAN.

Based on the Quick Setup Wizard for each mode shown in the above picture, Set the parameters and options that user needs, and click Next

Use mobile phone to login

Mobile phone login web page of AP (default password is admin)

When mobile phone connect to AP through wireless, need to configure static IP according to below steps





How to set static IP for Android system mobile phone

Open the phone click “settings”, choose “WLAN”, find and long press the SSID of the AP, pop-up menu select “Static IP”, set a static IP 192.168.188.X (X can not be 253 or 252) (the static IP should be same IP segment as AP) for mobile phone, then input the right Gateway IP, network mask and DNS .

How to set static IP for IOS system mobile phone

Click “settings”, choose “Wi-Fi”, click exclamation mark after connect wireless signal successfully, setup the static IP 192.168.188.X(X can not be 253 or 252), then input gateway IP, subnet mask and DNS, please note: the static IP should be in the same IP segment as AP.

*This manual is only used for instructions and provides an accurate information as we can , but we can not make sure all the information in this manual is correct.This manual may be updated because of the products upgrade,we have the right to revise the manual without any notice.

Device management

Note:5G band (W52) indoor use only.

FCC Warning Statement

Changes or modifications not expressly approved by the party responsible for compliance could void the user’s authority to operate the equipment. This equipment has been tested and found to comply with the limits for a Class B digital device, pursuant to Part 15 of the FCC Rules. These limits are designed to provide reasonable protection

against harmful interference in a residential installation. This equipment generates uses and can radiate radio frequency energy and, if not installed and used in accordance with the instructions, may cause harmful interference to radio communications. However, there is no guarantee that interference will not occur in a particular installation. If this equipment does cause harmful interference to radio or television reception, which can be determined by turning the equipment off and on, the user is encouraged to try to correct the interference by one or more of the following measures:

- Reorient or relocate the receiving antenna.
- Increase the separation between the equipment and receiver.
- Connect the equipment into an outlet on a circuit different from that to which the receiver is connected.
- Consult the dealer or an experienced radio/TV technician for help.

This device complies with part 15 of the FCC Rules. Operation is subject to the following two conditions:

1. This device may not cause harmful interference, and
2. this device must accept any interference received, including interference that may cause undesired operation.

RF Exposure Statement

To maintain compliance with FCC's RF Exposure guidelines, This equipment should be installed and operated with minimum distance of 20cm the radiator your body. This device and its antenna(s) must not be co-located or operation in conjunction with any other antenna or transmitter.

FAQ and Solutions

NOTE: All the APs support both FAT and FIT AP mode , the default mode is FIT AP mode.

Forget login name and password ?

Reset to factory default settings: press the reset button for above 10 seconds and

release it , the device will reboot and reset to factory default settings autom

Can not Login wireless AP management WEB interface ?

Check if PC with static IP and if this IP is in the same IP segment of AP, make sure it is not set to other IP range. Reset AP to factory default settings and re-connect to AP. Make sure wireless AP IP address is 192.168.188.253 and not occupied by other devices. Check if there is something wrong with PC and Ethernet cable, recommend to use CAT 5e or above UTP cable.

Forget wireless network password ?

Connect AP by wired ,login WEB management interface ,click wireless settings basic settings Encryption-Password, and set a new password for wireless network. Reset AP to factory default settings, the default password is 66666666.

Can not obtain IP Address ?

In gateway or WISP mode, check if DHCP server is enabled In repeater or AP mode, check if upper network connection is normal ,or if LAN network DHCP server is working


How to change FIT AP to FAT AP ?

Switch FAT and FIT mode by clicking the button at right corner ,then device will reboot .After rebooting,please clear history buffer files in IE and then login.

AC controller device list can not get AP devices ?

The mode for AC controller and AP are different, AC controller with model prefixed AC is used to control FAT AP, the model prefixed in FAC or BW is used to control

Documents / Resources

	LevelOne AP-1 Ceiling Wireless Access Points [pdf] Installation Guide PC26, TVV-PC26, TVVPC26, AP-1 Ceiling Wireless Access Points, AP-1, Ceiling Wireless Access Points, Wireless Access Points, Access Points, P oints
---	---

References

- [User Manual](#)

LevelOne

Access Points, AP-1, AP-1 Ceiling Wireless Access Points, Ceiling Wireless Access Points, LevelOne, PC26, Points, TVV-PC26, TVVPC26, Wireless Access Points

Leave a comment

Your email address will not be published. Required fields are marked *

Comment *

Name

Email

Website

☐ Save my name, email, and website in this browser for the next time I comment.

Post Comment

Search:

Search

[Manuals+](#) | [Upload](#) | [Deep Search](#) | [Privacy Policy](#) | [@manuals.plus](#) | [YouTube](#)

This website is an independent publication and is neither affiliated with nor endorsed by any of the trademark owners. The "Bluetooth®" word mark and logos are registered trademarks owned by Bluetooth SIG, Inc. The "Wi-Fi®" word mark and logos are registered trademarks owned by the Wi-Fi Alliance. Any use of these marks on this website does not imply any affiliation with or endorsement.