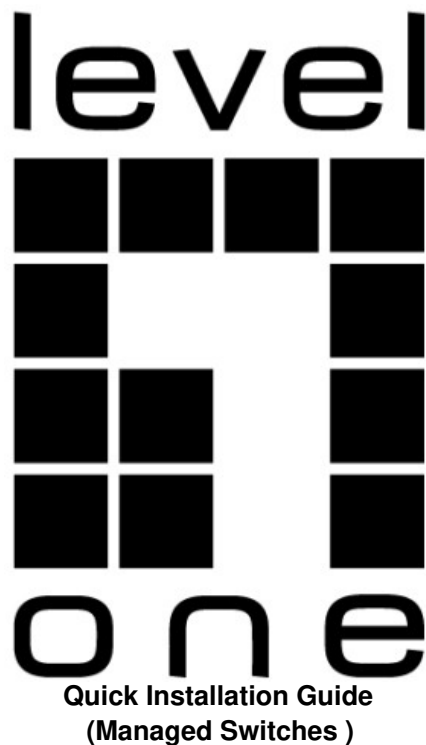




level one XQS-3126 Network Switch Managed Zwart Installation Guide

[Home](#) » [level one](#) » level one XQS-3126 Network Switch Managed Zwart Installation Guide 



Contents

- [1 XQS-3126 Network Switch Managed Zwart](#)
- [2 Equipment Installation](#)
- [3 Perform Initial Configuration](#)
- [4 macOS](#)
- [5 Safety instructions](#)
- [6 Care and cleaning](#)
- [7 Documents / Resources](#)
 - [7.1 References](#)

XQS-3126 Network Switch Managed Zwart

This Quick Installation Guide only describes the most basic situations and settings. All detailed information is described in the user manual.

Equipment Installation

1. Installed in the rack

Install the switch on a 19-inch standard rack, and the installation steps are as follows:

- Check the grounding and stability of the rack;
- Install the two L-shaped brackets in the accessories on both sides of the switch panel, and fix them with the screws in the accessories;
- Place the switch in the appropriate location of the rack, and support it using a tray;
- Secure the L-shaped brackets on the guide slots fixed at both ends of the rack, to ensure that the switch can be mounted on the rack in a stable, horizontal manner;
- Use a power cord to connect the switch power connector with the power socket.

2. Installed on the working table

Install the switch on a working table, and the installation steps are as follows:

- Place the switch with its bottom up on a sufficiently large, stable and properly-grounded working table;
- Flip over the switch, and place it on the working table stably;
- Use a power cord to connect the switch power connector with the power socket.
- The switch uses 100-240V, 50/60Hz AC, and make sure that both power supply and grounding are normal before power on.
- After power on, please check the switch's power indicator (Power) is on, and if so, it indicates that the power supply is connected properly.
- Do not place heavy objects on the top of the switch.

Perform Initial Configuration

- Connect PC to the switch console port using console cable.
- Configure the PC's serial port: 115200 bps, 8 characters, no parity, one stop bit, 8 data bits, and no flow control.
- Log in to the CLI using default settings: Username "admin" and password "admin."

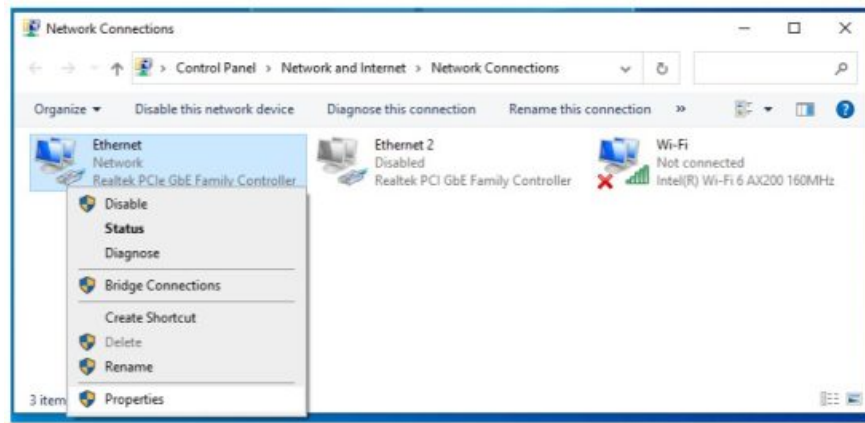
Note: For further information on switch configuration, refer to the CLI Reference Guide and Web Management Guide.

Logging on to the equipment

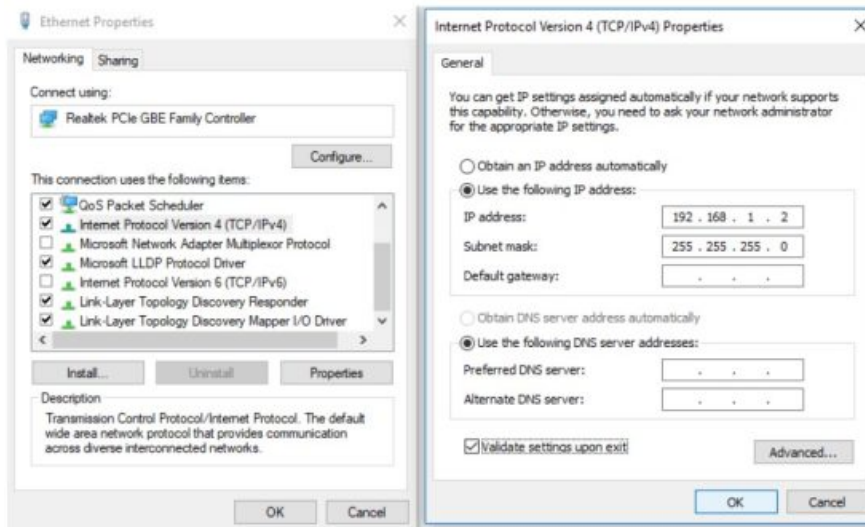
- Connect the RJ-45 interface cable of a Industrial switch with a computer using a network cable.
- Set the TCP/IP properties of the computer.

■ Windows

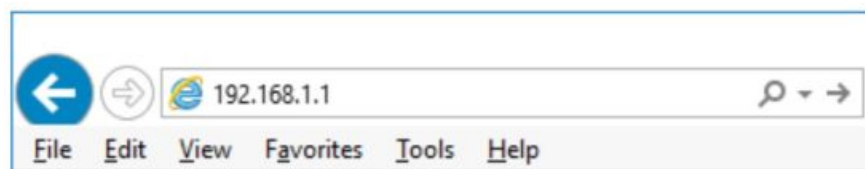
1. Click Start—> Control Panel—> Network and Internet—> Network and Sharing Center—> Change adapter settings, right click Local connection and select Properties.



2. Double-click Internet Protocol 4 (TCP/IPv4)
3. Set the computer's IP address: The computer's IP address should be any one of the following free IP addresses [192.168.1.2](#) ~ [192.168.1.253](#), and then click OK, to return to the previous page, click OK.

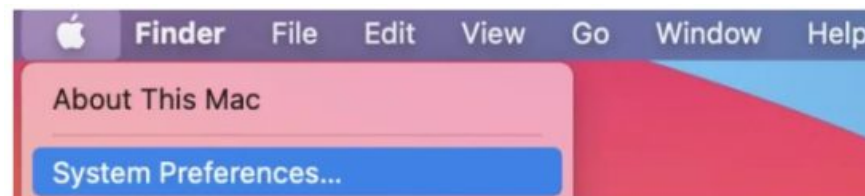


4. Logging on to the equipment: Open a browser and type [192.168.1.1](#) in the address bar, and then press Enter; in the pop-up login interface, enter the factory logon username “admin”, password “admin” and click OK.

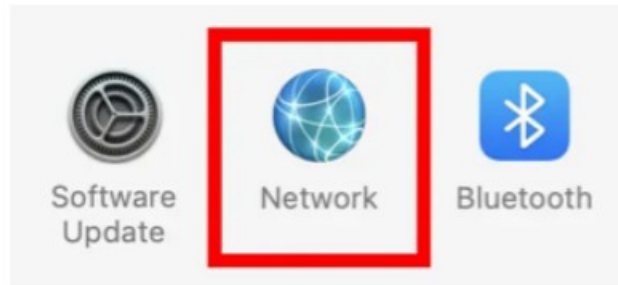


macOS

1. Click the Apple icon, from the Apple drop-down list, select System Preferences.



2. Click the Network icon.



3. Select the Ethernet (for wired connection), from the Configure IPv4 drop-down list, select Manually.



4. Set the computer's IP address: The computer's IP address should be any one of the following free IP addresses [192.168.1.2](#) ~ [192.168.1.253](#), Subnet Mask [255.255.255.0](#), and then click Apply.

5. Logging on to the equipment: Open a browser and type [192.168.1.1](#) in the address bar, and then press Enter; in the pop-up login interface, enter the factory login username "admin", password "admin" and click OK.



Explanation of symbols

The symbol with the exclamation mark in the triangle is used to indicate important information in these operating instructions. Always read this information carefully.



Disposal

WEEE: Dispose the product at a recycling point. Do not dispose together with household waste. Incorrect storage/disposal can harm the environment and/or cause injury.



Safety instructions

Read the operating instructions carefully and especially observe the safety information. If you do not follow the safety instructions and information on proper handling in this manual, we assume no liability for any resulting personal injury or damage to property. Such cases will invalidate the warranty/ guarantee.

a) General information

- The device is not a toy. Keep it out of the reach of children and pets.
- Do not leave the packaging material lying around carelessly. This may become dangerous playing material for children.
- Protect the appliance from extreme temperatures, direct sunlight, strong jolts, high humidity, moisture, flammable gases, steam, and solvents.
- Do not place the product under any mechanical stress.
- If it is no longer possible to operate the product safely, take it out of operation and protect it from any accidental use. Safe operation can no longer be guaranteed if the product:
 - is visibly damaged,
 - is no longer working properly,
 - has been stored for extended periods in poor ambient conditions or
 - has been subjected to any serious transport-related stress.
- Please handle the product carefully. Jolts, impacts, or a fall, even from a low height, can cause damage to the product.

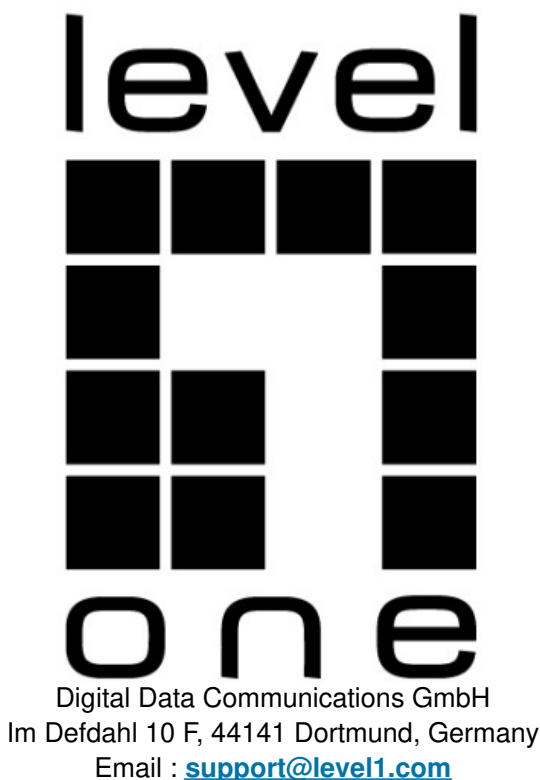
- Consult an expert when in doubt about the operation, safety, or connection of the appliance.
- Maintenance, modifications, and repairs must only be completed by a technician or an authorized repair center.
- If you have questions that remain unanswered by these operating instructions, contact our technical support service or other technical personnel.

b) People and product


- Never use the product immediately after it has been brought from a cold room into a warm one. This can cause condensation to form, which may lead to irreparable damage. Allow the product to reach room temperature before connecting it and putting it to use. This may take several hours.

Care and cleaning

- Disconnect the product from the mains before cleaning.
- Do not use any aggressive cleaning agents, rubbing alcohol, or other chemical solutions as they can cause damage to the housing and functioning of the product.
- Clean the product with a dry, fiber-free cloth.



Documents / Resources

| | |
|--|---|
| <p>Quick Installation Guide (Managed Switches)</p>  | <p>level one XQS-3126 Network Switch Managed Zwart [pdf] Installation Guide XQS-3126 Network Switch Managed Zwart, XQS-3126, Network Switch Managed Zwart, Switch Managed Zwart, Managed Zwart</p> |
|--|---|

References

- [User Manual](#)

[Manuals+](#), [Privacy Policy](#)

This website is an independent publication and is neither affiliated with nor endorsed by any of the trademark owners. The "Bluetooth®" word mark and logos are registered trademarks owned by Bluetooth SIG, Inc. The "Wi-Fi®" word mark and logos are registered trademarks owned by the Wi-Fi Alliance. Any use of these marks on this website does not imply any affiliation with or endorsement.