



Levana Mila Additional Monitor User Guide

[Home](#) » [Levana](#) » **Levana Mila Additional Monitor User Guide** 

Contents

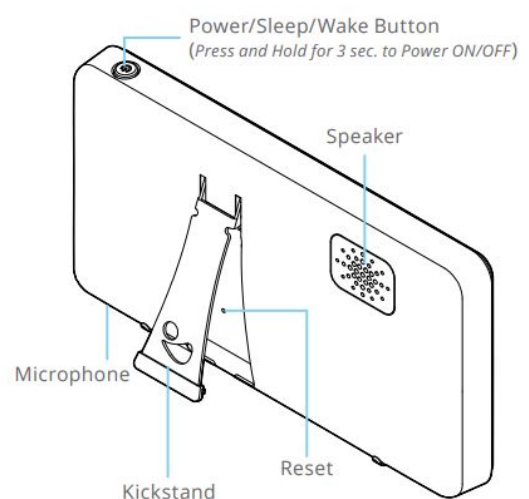
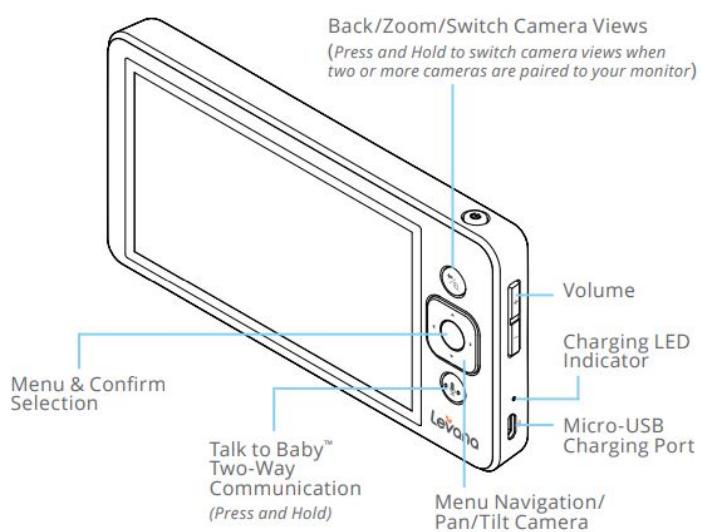
- [1 Levana Mila Additional Monitor](#)
- [2 Monitor Buttons and Functions](#)[Camera Buttons & Functions](#)[Notification Bar](#)
- [3 Setting Up Your Mila Baby Monitor](#)
- [4 Using Your Mila Baby Monitor](#)
- [5 Lullabies](#)
- [6 Pairing Additional Cameras](#)
- [7 Frequently Asked Questions](#)
- [8 IC STATEMENT](#)
- [9 We Want to Hear From You](#)
- [10 Documents / Resources](#)
 - [10.1 References](#)
- [11 Related Posts](#)

Levana Mila Additional Monitor

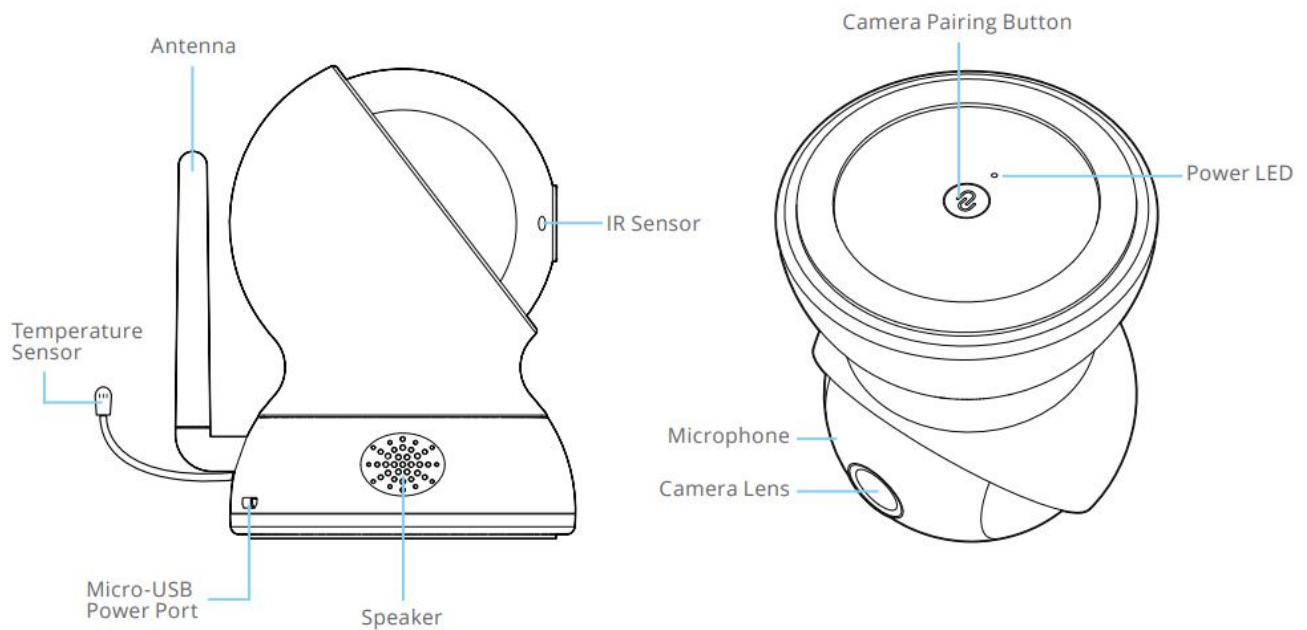




Monitor Buttons and Functions



Camera Buttons & Functions



Notification Bar

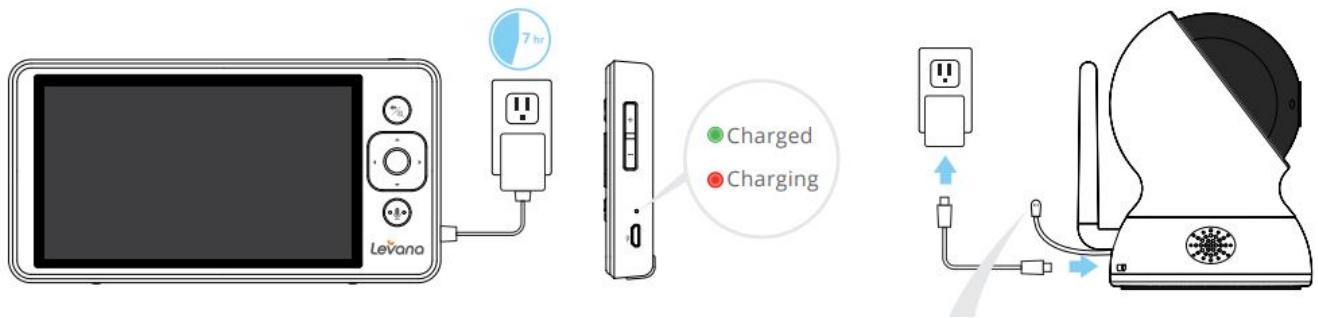


1. Signal Strength
2. Voice Activated Power Save Mode
3. Monitor Mode: Audio Only
4. Monitor Mode: Always On
5. Temperature Alert (if activated)
6. Lullaby Playing
7. Monitor Audio Muted
8. Sound Indicator (at active camera)
9. Temperature (at active camera)
10. Time
11. Battery Level

TIP: This icon represents the Lullaby duration you have set. The dots located beside the camera icon indicate which paired camera you are viewing.

Setting Up Your Mila Baby Monitor

Charge the Monitor for 7 hours and Plug in the Camera



IMPORTANT: We recommend placing your camera(s) no more than 5ft. away from your baby, as audio may not be detected if placed further. For a safe setup, never mount cameras directly above the crib or baby. Power cords must be kept at least 3ft. away from the crib and baby's reach at all times.

TIP: Ensure the camera's temperature sensor is unobstructed. When the camera is placed near a window or air vent, the accuracy of the temperature rating may be affected.

Using Your Mila Baby Monitor

Viewing Modes

Navigate to the Menu and select Viewing Modes. Please note that Multi-Camera Views require two or more paired cameras.

TIP: Press and hold the button to switch cameras when there are two or more cameras paired to your monitor.

1. Full-Screen View



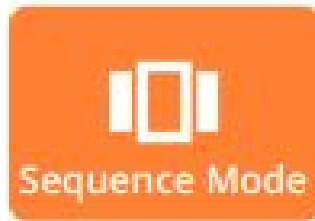
This mode allows you to see one camera in full-screen view.

2. Multi-Camera Views



Split and Quad Screen allows you to see up to four cameras at once.

3. Sequence Mode



When there are two or more paired cameras, your monitor can cycle through each camera on full screen every 5 seconds.

IMPORTANT: The camera with an orange border is the Active camera. This means the audio, pan & tilt functions, and Talk to Baby™ are active for this camera only.

Monitor Modes

Navigate to the Menu and select Monitor Mode. Each option will change how your audio and cameras are displayed on the monitor.

Always On

This mode keeps your display and audio ON, unless you press the Sleep/Wake button.

TIP: When you press the orange Sleep/Wake button, Mila will not display any video or play any audio.

Audio Only

This mode turns OFF your display and keeps audio playback from your cameras ON. If you have multiple cameras paired, you'll only hear audio for the Active camera. In Sequence Mode, audio will cycle through all paired cameras every 5 seconds.

Voice Activated

This mode puts your video display to sleep and wakes your monitor for 20 seconds when noise is detected at the camera. If two or more cameras are paired, your monitor will wake up to the specific camera that detects noise. The sensitivity of the camera can be adjusted. Low: If you only want to hear loud screaming or crying, Medium: If you want to hear babbling and talking, or High: If you want to hear everything from low whispers to crying.

Lullabies

Navigate to the Menu, select Lullabies, and select the camera you want to play Lullabies or White Noise from. Each camera can play a different lullaby.



1. Lullaby

Choose between three classic lullabies, soothing nature sounds or white noise.

2. Sound Activation

When turned ON, your selected lullaby will play for five minutes when Mila detects noise from your baby.

3. Duration

Select ON to play a lullaby continuously or choose a preset duration. Duration does not need to be turned ON for Sound Activation to be active.

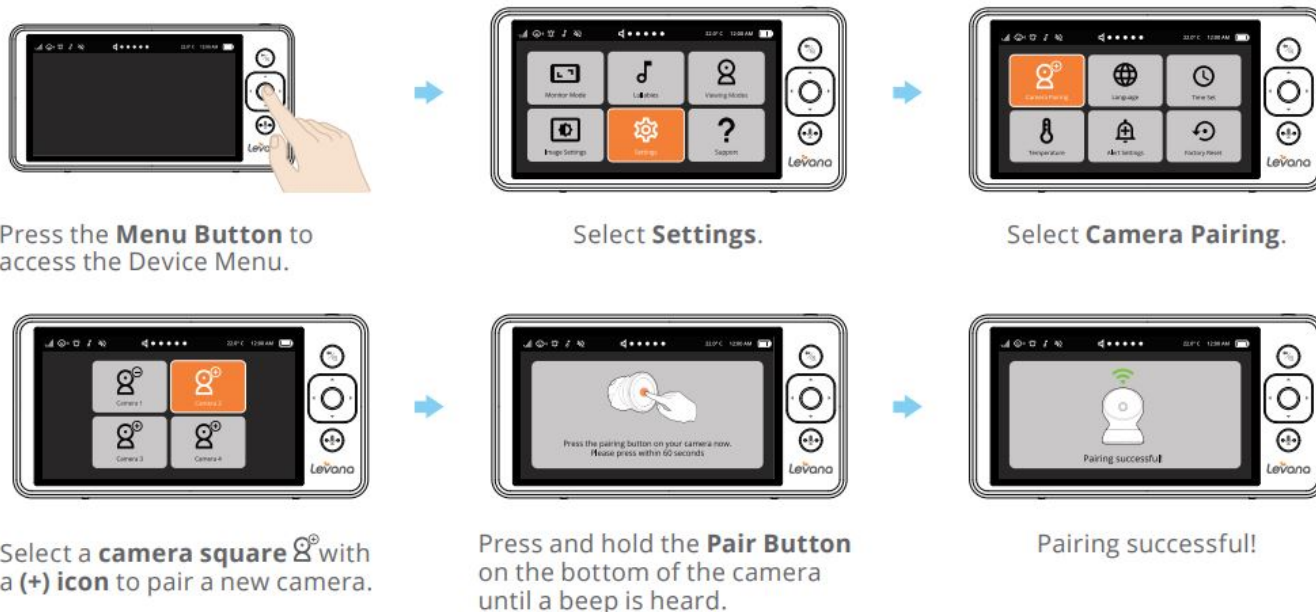
4. Camera Volume

Adjust the volume output from the selected camera. This will apply to the Lullabies and Talk-to-Baby™ volume.

TIP: While using Lullabies in the Voice Activated Monitor Mode, the microphone is muted and will not activate for noise in the room. We recommend using Always On or Audio Only while playing Lullabies from the camera.

Pairing Additional Cameras

Your initial Mila Baby Monitor will come to you with the camera(s) paired. Follow these steps if adding additional cameras.



TIP: Camera must be plugged-in to pair with Mila's monitor.

Frequently Asked Questions

How can I change which camera I am viewing?

Press and hold the button to switch your Active camera. When doing this in Split or Quad Screen View, the Active camera will have an orange border.

TIP: Audio playback, Talk to Baby™, and pan & tilt functions will only affect the Active camera.

Why can't I hear audio from one of my cameras while in Split Screen Monitor Mode?

While in Split or Quad Screen and Always On Monitor Mode, Mila will only play audio from the Active camera.

Note: The Active camera will have an orange border. If you need to detect audio from all cameras, we recommend using Sequence Mode. This will cycle through each camera in Full-Screen every 5 seconds.

Why is the temperature on my monitor different from the thermostat in my home?

Mila's thermostat is located on the camera (See Camera Buttons & Functions page). If your camera is placed near a window or air vent, the accuracy of the temperature rating may be affected. When moving the camera, it may take some time for Mila's thermostat to adjust to the temperature of the new location.

Why can't I hear my baby through the monitor when they're making noise?

Sometimes Mila's camera is too far away from your baby to detect the sounds being made. We recommend placing your camera within 3-5ft. from your little one for the best audio performance. While using Lullabies in Voice Activation Monitor Mode, the microphone on that camera is muted. This means you will not be notified if additional noise is detected. If playing Lullabies/White Noise from Mila's camera, we recommend using Always On or Audio Only.

How can I make my Mila battery last longer?

The less time your screen is turned on, the more battery life you will be able to preserve. We recommend using Voice Activation when possible so that you're only being notified when your little one makes a sound. There are options for setting the sensitivity of your Voice Activation. Using the Low Sensitivity will reduce the number of times Mila wakes up, only notifying you when noises such as crying or screaming are detected. Mila also features an Audio Only mode if you wish to have constant audio, but do not need to see your little one.

My video stream has gone black. How can I fix it?

Though rare, it is possible that other wireless devices in your home may interfere with Mila. If this happens, just press and hold the Menu button for 10 seconds and your video should resume.

Need More Help?

Our mission is to bring you the peace of mind you deserve during your parenting journey. If your experience with your monitor is anything short of amazing, we're here to fix that!



Open the camera & scan this QR code to access all of our Mila support articles & tips or visit: mylevana.com/support

WARNING

STRANGULATION HAZARD: Children have STRANGLED in cords. Keep this cord out of reach of children (more than 3ft. (0.9 m) away).

This device complies with part 15 of the FCC Rules. Operation is subject to the following two conditions: (1) This device may not cause harmful interference. (2) This device must accept any interference received, including interference that may cause undesired operation.

IC STATEMENT

This device contains license-exempt transmitter(s)/receiver(s) that comply with Innovation, Science and Economic Development Canada's license-exempt RSS(s). Operation is subject to the following two conditions:

1. This device may not cause interference.
2. This device must accept any interference, including interference that may cause undesired operation of the device.

This equipment complies with IC RSS-102 radiation exposure limits set forth for an uncontrolled environment. This equipment should be installed and operated with minimum distance 20cm between the radiator and your body.

We Want to Hear From You

Help your fellow parents decide which monitor is best for their families. Please leave an honest review wherever you purchased your Mila!

mylevana.com


[/mylevana](https://www.instagram.com/mylevana)

@mylevana

Worry Less, Do More

Learn about all of your Mila Baby Monitor’s features and tips by viewing our support videos.

Documents / Resources

	Levana Mila Additional Monitor [pdf] User Guide Mila, Additional Monitor, Mila Additional Monitor
---	--

References

-  [YouTube](#)