



## LETSCOM Wireless Earbuds ST-BE30 User Manual

[Home](#) » [Letscom](#) » LETSCOM Wireless Earbuds ST-BE30 User Manual 

LETSCOM Wireless Earbuds ST-BE30 User Manual

# LETSCOM<sup>®</sup>

# Wireless Earbuds ST-BE30

## User Manual

Thank you for purchasing our products. This manual addresses the safety guidelines, warranty and operating instructions. Please review this manual thoroughly before operating your device.

## Contents

- 1 Package Contents
- 2 At a Glance
- 3 Earbud LED Indicator Guide
- 4 Charging Case LED Indicator Guide (with earbuds in the case)
  - 4.1 Charging case is being charged
  - 4.2 Charging case is not being charged
- 5 Wearing the Earbuds
- 6 Using the Earbuds
  - 6.1 Charge the earbuds
  - 6.2 Charge the charging case
  - 6.3 Power on/off
  - 6.4 Pair
  - 6.5 Play/pause playing songs
  - 6.6 Last/Next song
  - 6.7 Volume
  - 6.8 Answer/hang up/reject calls
  - 6.9 Reset the earbuds/clear all pairing information on the earbuds
- 7 Trouble Shooting
- 8 Specifications
- 9 SAFETY AND WARRANTY
- 10 WARRANTY
- 11 Related Posts

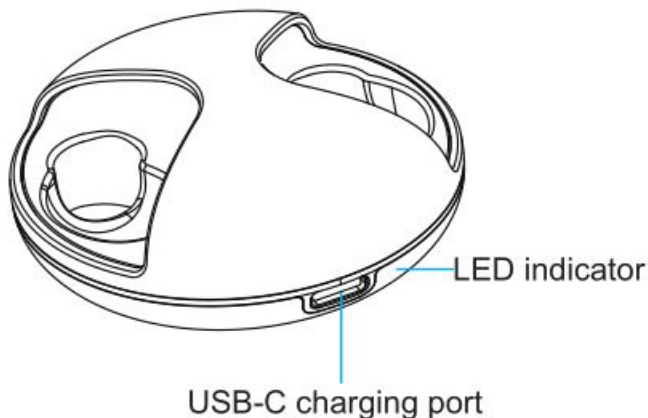
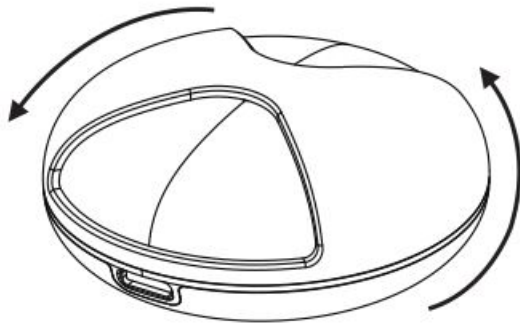
## Package Contents

- Wireless earbuds × 1 pair (left and right)
- Charging case × 1
- Eartips × 3 pairs (large, medium, small)
- USB-C charging cable × 1
- User manual × 1

## At a Glance

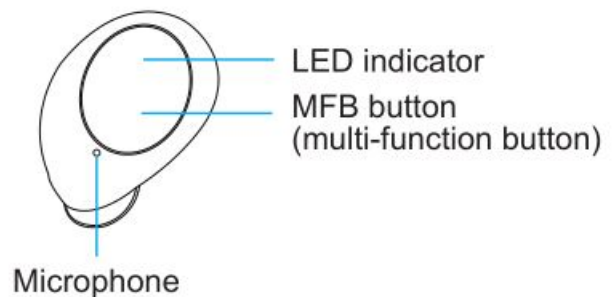
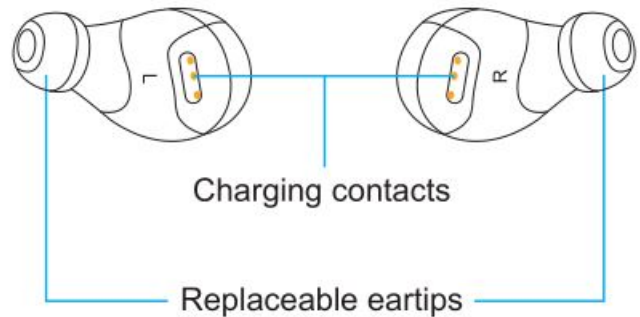
### Charging Case

Rotate the jet black cover of the charging case to open/close.



### Left Earbud (Main Earbud)

### Right Earbud



### Earbud LED Indicator Guide

- Power on: LED indicators flash blue 5 times
- Power off: LED indicators stay red for 2 seconds and go off
- Pairing mode (using both earbuds): LED indicator on the left earbud flashes red and blue alternately
- Pairing mode (using only one earbud): LED indicator on the earbud flashes red and blue alternately
- Connected to a Bluetooth device: LED indicators flash blue once every 6 seconds
- Disconnected: LED indicator on the left earbud flashes red and blue alternately
- Earbuds are being charged: LED indicators stay red
- Earbuds are fully charged: LED indicators turn blue and are off in 1 minute
- Low battery: LED indicators flash red twice and blue once every 4 seconds and a voice reminder prompts

### Charging Case LED Indicator Guide (with earbuds in the case)

#### Charging case is being charged

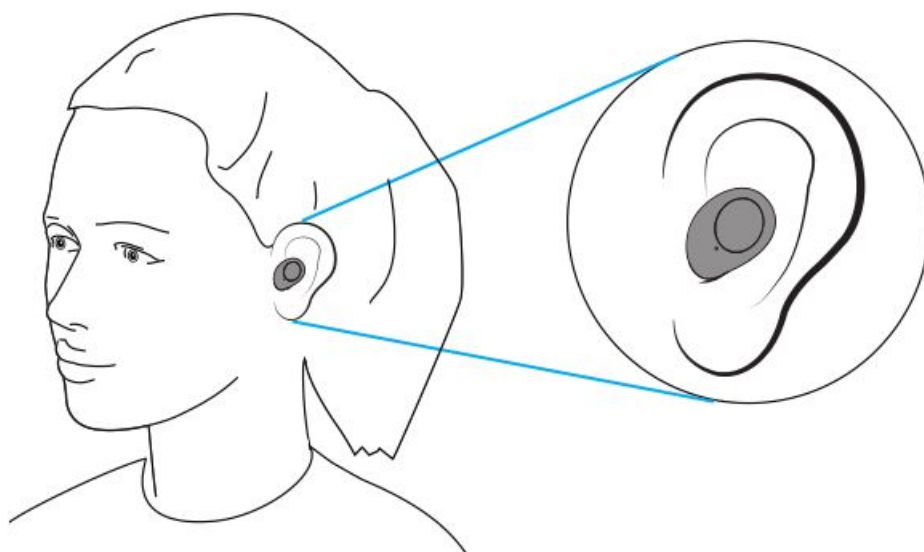
- 1-25% battery: the 4 indicators flash alternatively
- 25%-50% battery: the leftmost indicator stays on, and the rest 3 indicators flash alternatively
- 50%-75% battery: the left 2 indicators stay on, and the right 2 indicators flash alternatively
- 75%-100% battery: the left 3 indicators stay on, and the rightmost indicator flashes
- Fully charged: the 4 indicators stay on

### Charging case is not being charged

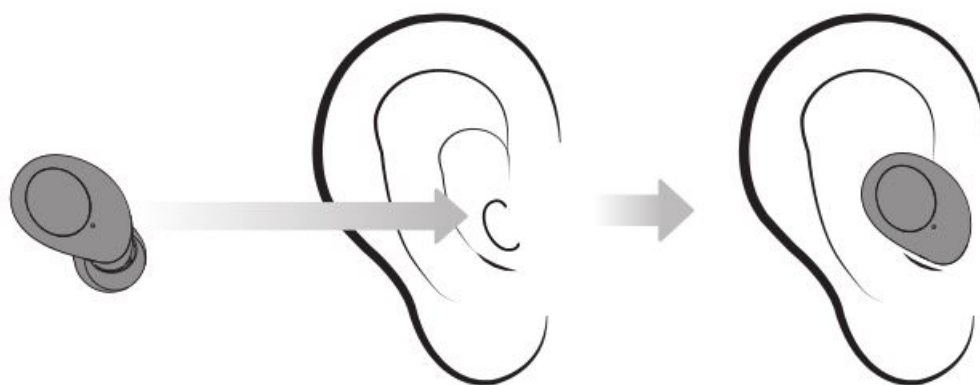
- 1-25% battery: the leftmost indicator stays on
- 25%-50% battery: the left 2 indicators stay on
- 50%-75% battery: the left 3 indicators stay on
- 75%-100% battery: the 4 indicators stay on
- Low battery: the leftmost indicator flashes

**Note:** Indicators will be off in 1 minute.

### Wearing the Earbuds



Insert the earbud into your ear and rotate to fit comfortably. Ensure the microphone is pointing towards your mouth.

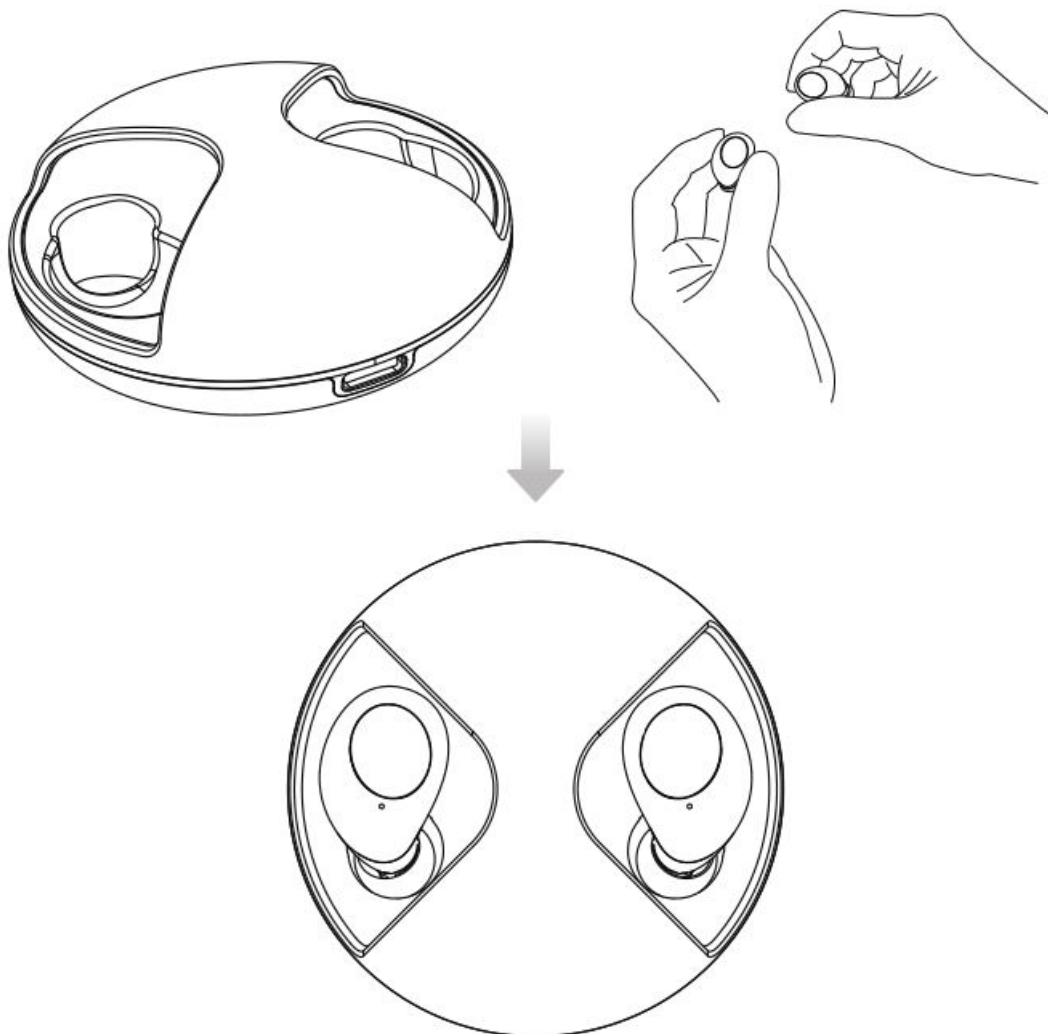


### Using the Earbuds

When you use the earbuds for the first time, remove the insulating films on the charging contacts of the earbuds.

#### Charge the earbuds

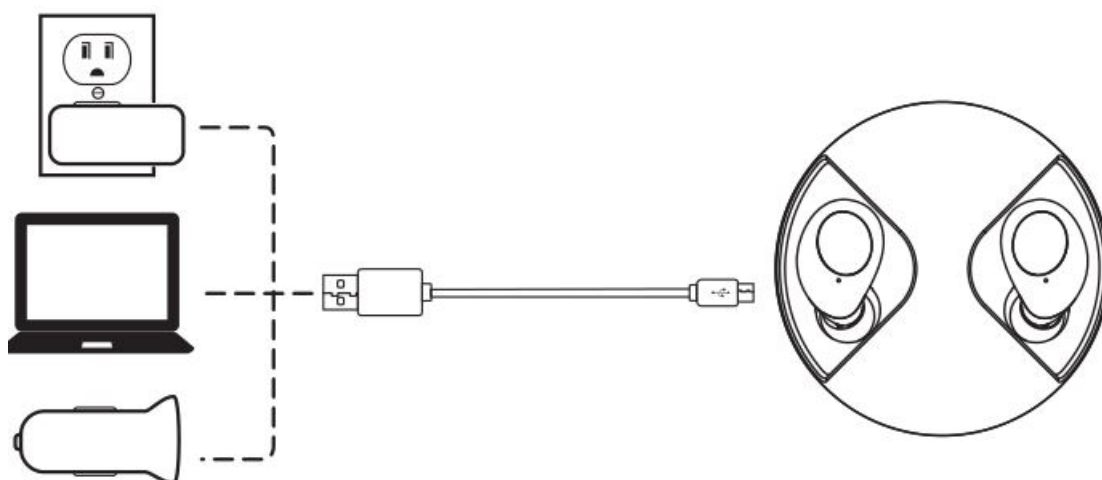
1. Align the charging contacts on the right earbud with the charging pins on the right side of the case.
2. Repeat step 1 and to charge the left earbud.



3. When the earbuds LED indicators stay red, close the case.

#### **Charge the charging case**

1. Plug the small end of the USB-C cable into the USB-C port of the charging case.
2. Plug the other end into a USB wall charger or computer (DC 5V) that is powered on.



#### **Notes:**

1. It takes approx. 1 hour to fully recharge the earbuds.
2. The earbuds and the charging case charge simultaneously. The charging case can be used as a standalone

charger.

3. When the charging case is out of power, you put the earbuds back into the case and close the case, the earbuds will not turn off automatically. Turn off the earbuds manually.
4. When the charging case is out of power, the earbuds will not turn on automatically the time you take them out. Turn on the earbuds manually.

#### **Power on/off**

##### **Power on**

- The earbuds are automatically on when you take them out of the charging case.
- Press and hold the MFB buttons on both earbuds for 4 seconds to turn on.

##### **Note**

When you use the earbuds for the first time, remove the insulating films on the charging contacts of the earbuds, and turn on the earbuds by pressing and holding the MFB buttons on both earbuds for 4 seconds.

##### **Power off**

- The earbuds are automatically off when you put them back into the charging case.
- Press and hold the MFB buttons for 6 seconds to turn them off (when both earbuds are paired with your phone, press and hold the MFB button on either left or right earbud, the other earbud will be off at the same time).

##### **Note**

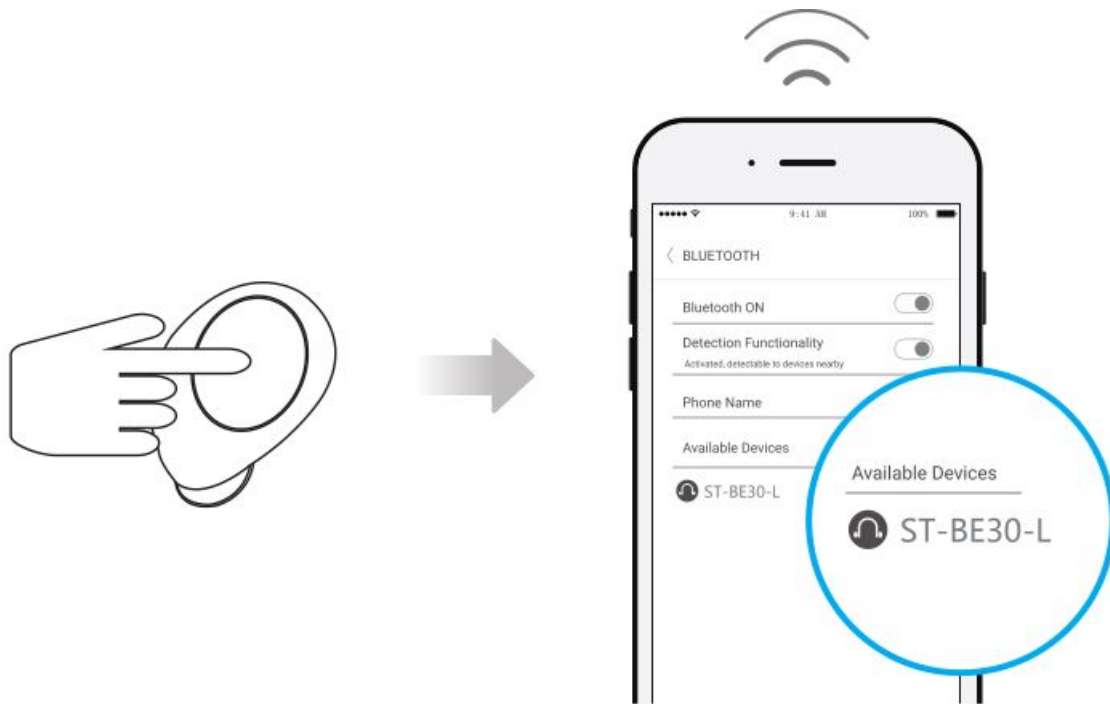
When the earbuds are being charged in the charging case and the charging case is out of power, the earbuds will turn on

automatically. If the Bluetooth of your Bluetooth device connected to the earbuds before is on and device is within pairable range, earbuds will connected to your device automatically; if the Bluetooth of your Bluetooth device connected to the earbuds before is off or device is not within pairable range, earbuds will be off in 5 minutes.

#### **Pair**

##### **Pair both earbuds (Pair use)**

1. Make sure the earbuds and your phone or other Bluetooth devices are next to each other (within 3 feet, no obstacles between).
2. Turn on the Bluetooth of your phone or other Bluetooth devices.
3. Turn on the earbuds (when they are in shutdown state) and the earbuds enter pairing mode (LED indicator on the left earbud flashes red and blue alternately).
4. In the list of found Bluetooth devices in your phone or other Bluetooth devices, choose "ST-BE30-L" to pair.
5. Enter "0000" if your phone or Bluetooth device asks you to enter a code to pair.



#### Notes:

- The earbuds will directly enter pairing mode the first time you turn them on.
- The earbuds will connect to the last paired Bluetooth device automatically when they are turned on. Please turn on the Bluetooth of your Bluetooth device before turning on the earbuds.
- If pairing failed, turn off the earbuds first and then press and hold the MFB button of the left earbud until the indicator on the left earbud flashes red and blue alternately and earbud enters pairing mode. Choose "ST-BE30-L" in your phone to pair and turn on the right earbud.
- When both earbuds are connected to your phone, if you put the right earbud back to the charging case, you can use the left earbud alone without interruption; but if you put the left earbud back to the charging case, the right earbud is also disconnected to your phone and you have to pair the right earbud with your phone again to use the right earbud alone.
- When the earbuds are on but not paired with your phone or other Bluetooth devices, they will exit the pairing mode and be automatically off in 5 minutes.

#### Pair ONE earbud (Mono Use)

You can use both earbuds simultaneously or use either of the two earbuds alone.

1. Make sure the earbud and your phone or other Bluetooth devices are next to each other (within 3 feet, no obstacles between).
2. Turn on the Bluetooth of your phone or other Bluetooth devices.
3. Take the earbud out of the charging case.
4. Turn off the earbud by pressing and holding the MFB button for 6 seconds.
5. Press and hold the MFB button on the earbud until the indicator flashes red and blue alternately and earbud enters pairing mode.
6. In the list of found Bluetooth devices in your phone or other Bluetooth devices, choose "ST-BE30-L" if you use the left earbud or "ST-BE30-R" if you use the right earbud to pair.

**Note:**

When the left/right earbud is connected to your phone and you take the other earbud out of the charging case, earbuds will pair with each other and then link back to your phone automatically (in the condition that you have paired both earbuds with your phone before) .

**Play/pause playing songs**

Press the MFB button to pause and press the MFB button again to resume playing songs.

**Last/Next song**

Press and hold the MFB button on the left/right earbud for 3 seconds until you hear a “Do” sound to skip to the last/next song.

**Volume**

Press the MFB button on the left/right earbud twice to decrease/increase the volume.

**Answer/hang up/reject calls**

- Press the MFB button or operate on your phone to answer an incoming call.
- Press the MFB button or operate on your phone to hang up an ongoing call.
- Press and hold the MFB button for 3 seconds to reject an incoming call.

**Note:**

To make/answer calls using ST-BE30 earbuds, choose “ST-BE30-L” as “Audio” route on your phone when you are making/answering calls.

**Reset the earbuds/clear all pairing information on the earbuds**

Turn off the earbuds and press and hold the MFB buttons for 14 seconds until the indicators on earbuds flash red and blue alternatively and then go off.

**Trouble Shooting****Q: What should I do if the pairing failed?****A:**

1. Put the earbuds back to the charging case and make sure that they are off.
2. Take the earbuds out of the case and they are automatically on.
3. Wait that the indicator on the left earbud flashes red and blue alternately and earbuds enter pairing mode.
4. Choose “ST-BE30-L” in your phone to pair.

If the pairing still fails, check the following points:

- Make sure the earbuds and your Bluetooth device are next to each other or within 3 feet and there are no obstacles between.
- There are no signal interference nearby (check the “Connection is not stable” part for signal interference



conditions).

- Try to reboot your Bluetooth device.

**Q: Earbuds are connected to phone A. What should I do if I want to pair earbuds with phone B when I am not able to disconnect earbuds from phone A?**

**A:**

1. Turn off the earbuds by pressing and holding the MFB buttons for 6 seconds.
2. Press and hold the MFB button of the left earbud until the indicator on the left earbud flashes red and blue alternately and earbud enters pairing mode.
3. Choose "ST-BE30-L" in phone B to pair and turn on the right earbud.

**Q: Why isn't the sound clear/consistent sometimes?**

**A:** Connection is not stable.

Bluetooth signal is transmitted wirelessly and signals can be affected, which results in intermittent sound of earbuds, in the following conditions:

- The distance between the earbuds and your Bluetooth device is at the edge of the Bluetooth pairable distance.
- Transmitted signals encounter obstacles or human body blockage.
- There are high-power electronic devices nearby.
- There are other Bluetooth devices and are being turned on/off nearby.

To resume stable connection between the earbuds and your Bluetooth device, try to avoid the above conditions and do the pairing again following the steps in the pairing failed part.

**Q: Is there a latency when I am watching a video from laptop or cell phone?**

**A:**

1. Video latency depends not only on the earbuds, but also the cell phones and the apps.
2. Due to the Bluetooth 5.0 and high sensitivity antenna, the latency is hardly noticed on iOS devices, such as iPhone and iPad series.

For Android and Windows devices, the latency may be noticed in a few apps.

**Q: Why is the power running out fast?**

**A:** The earbuds playtime varies according to volume level and audio content. The following conditions may cause fast power consumption:

- When the charging case is out of power, you put the earbuds back into the case and close the case, the earbuds will not turn off automatically. To avoid unwanted power consumption, turn off the earbuds manually.
- When the earbuds are being charged in the charging case and the charging case is out of power, the earbuds will turn on automatically. To avoid unwanted power consumption, turn off the earbuds manually.

## Specifications

Model	ST-BE30
Bluetooth Standard	V5.0
Operating Range	33 feet/10 meters (No obstacles between)
Supporting Protocols	A2DP/HFP/HSP/AVRCP
Charging Time	1 hour (earbuds); 2.5 hours (charging case)
Talk/Playing Time	about 4.5 hours (Varies according to volume level and audio content)
Waterproof Rate	IPX5
Charging Voltage	DC 5V
Battery Type	Li-polymer
Battery Capacity	42mAh (each earbud); 600mAh (charging case)

## SAFETY AND WARRANTY

### Important Safety Instructions

- Use of earbuds will impair your ability to hear other sounds. Use caution while using your earbuds when you are engaging in any activity that requires your full attention.
- If you have a pacemaker or other electrical medical devices, you should consult your physician before using this product.
- This package contains small parts that may be hazardous to children and should be kept out of reach from children. This product is not a toy – never allow children to play with this product. Always store the product out of reach from children. The bags themselves or the many small parts they contain may cause choking if ingested.
- Never try to dismantle the product yourself, or push objects of any kind into the products, as this may cause short circuits which could result in a fire or electric shock.
- None of the components can be replaced or repaired by users. Only authorized dealers or service centers may open the product. If any parts of your product require replacement for any reason, including normal wear and tear or breakage, please contact us.
- Avoid exposing your product to heat and humidity to protect against damage to the product or injury to you.

- Keep all products, cords, and cables away from operating machinery.
- If the product overheats, if the product has been dropped or damaged, if the product has a damaged cord or plug, or if the product has been dropped in a liquid, discontinue use and contact us.
- Do NOT use in areas where there are explosive hazards.
- Do NOT submerge the earbuds in water. Do NOT expose the earbuds to moving water (e.g., from a faucet, etc.).
- Do NOT wear the earbuds while showering or bathing, or when participating in water sports, e.g., swimming, waterskiing, surfing, etc.
- This product contains magnetic material. Consult your physician on whether this might affect your implantable medical device.
- Leaving the product in hot or cold places, such as in a closed car in the summer and winter conditions, will reduce the capacity and lifetime of the earbuds.
- Dispose of the product according to local standards and regulations.
- **Remember:** Always drive safely, avoid distractions and follow local laws!

Using the earbuds while operating a motor vehicle, motorcycle, watercraft or bicycle may be dangerous, and is illegal in some jurisdictions, just as use of the earbuds with both ears covered while driving is not permitted in certain jurisdictions. Check your local laws. Use caution while using your earbuds when you are engaging in any activity that requires your full attention. While engaging in any such activity, removing the earbuds from your ear or turning off your earbuds will keep you from being distracted, so as to avoid accident or injury. Do not take notes or read documents while driving.

- When using and charging this product, basic precautions should always be followed, including the following:
  - Read all the instructions before using the charging case.
  - To reduce the risk of injury, close supervision is necessary when the charging case is used near children.
  - Do not expose charging case to water, rain, liquids or snow.
  - Use of a power supply or charger that is not recommended or sold by power pack manufacturer may result in a risk of fire or injury.
  - Do not use the charging case in excess of its output range.
  - Do not use a charging case that is damaged or modified. Damaged or modified batteries may exhibit unpredictable behavior resulting in fire, explosion or risk of injury.
  - Do not disassemble the charging case. Incorrect reassembly may result in risk of fire or injury.
  - Do not open, crush or expose a charging case to fire or excessive temperature. Exposure to fire or extreme temperature may cause explosion.
  - Have servicing performed by a qualified repair person using only identical replacement parts.

## WARRANTY

We strive to build our products with the highest attention to detail and craftsmanship. However, sometimes there are occurrences of defect.

We are happy to offer 1-year hassle-free warranty to all our products as we continue to make amazing wireless product. Please contact us if you have any questions about our devices.

