



## LETSCOM LCW01 Smart Watch User Guide

[Home](#) » [Letscom](#) » LETSCOM LCW01 Smart Watch User Guide 

# LETSCOM

### LCW01 Smart Watch User Guide

If you are looking for a more detailed, and more convenient way to understand your device you will be able to find a detailed user manual, how-to videos, FAQs, and more information all on our official website, visit: <https://www.letscom.com/product-help> to find out more.



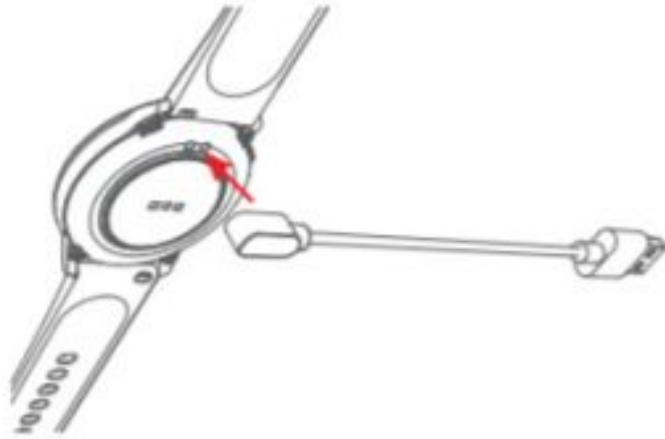
### Contents

- [1 Charging](#)
- [2 Installing the OnWear App](#)
- [3 Pairing](#)
- [4 Controls](#)
- [5 Documents / Resources](#)
- [6 Related Posts](#)

### Charging

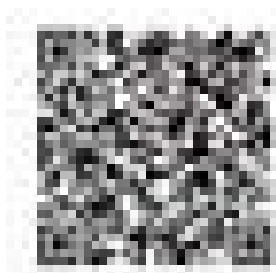
Please fully charge your watch before initial use.

1. Insert the USB plug of the charging cable into a USB charger.
2. Attach the other end to the charging contacts on the back of the watch.



### Installing the OnWear App




You can download OnWear from App Store/Google Play or scan the QR code below to download.



<https://www.letscom.com/download>

**Note:** OnWear app is only compatible with smartphones, not tablets or PCs.

### Pairing

	
<p>1. Turn on the Bluetooth of your phone.</p>	<p>2. Open the OnWear app, go to the “Device” page, and tap “Pair device”.</p>
	
<p>3. Tap “LCW01” to pair.</p>	

### Controls

### Buttons

 Press	<ul style="list-style-type: none"> <li>• Wake the screen</li> <li>• Return to the home screen</li> <li>• Pause/end the sport</li> </ul>
--	---





- Go to the sports interface
- Enter the sports tracking mode
- Pause/resume the sport.

## Touch Screen

- Swipe to go to different interfaces
- Tap to enter the function
- Swipe the screen to the right to return to the previous interface



## FCC ID: 2AW9KLCW01

**NOTE:** This equipment has been tested and found to comply with the limits for Class **B** digital devices, in accordance with section 15 of the FCC Rules. These limits are designed to provide reasonable protection against harmful interference in a residential installation. This equipment generates uses and can radiate radio frequency energy and, if not installed and used in accordance with the instructions, may cause harmful interference to radio communications. However, there is no guarantee that interference will not occur in a particular installation. If this equipment does cause harmful interference to radio or television reception, which can be determined by turning the equipment off and on, the user is encouraged to try to correct the interference by one or more of the following measures:

- Reorient or relocate the receiving antenna.
- Increase the separation between the equipment and receiver.
- Connect the equipment into an outlet on a circuit different from that to which the receiver is connected.
- Consult the dealer or an experienced radio/TV technician for help

Changes or modifications not expressly approved by the party responsible for compliance could void the user's authority to operate the equipment.

This device complies with Part 15 of the FCC Rules. Operation is subject to the following two conditions:

1. this device may not cause harmful interference, and
2. this device must accept any interference received, including interference that may cause undesired operation.

#### FCC RF exposure statement:

The device has been evaluated to meet general RF exposure requirements. The device can be used in portable exposure conditions without restriction.

This device is in compliance with the essential requirements and other relevant provisions of UK Radio Equipment Regulations (SI 2017/1206); UK Electrical Equipment (Safety) Regulations (SI 2016/1101); and UK Electromagnetic Compatibility Regulations (SI 2016/1091). All essential radio test suites have been carried out.

Manufacturer: HUMBOLDT TECHNOLOGY (HK) LIMITED

Address: ROOM 13 27/F HO KING COMMERCIAL CENTRE 2-16 FA YUEN STREET, MONGKOK, KL, HONGKONG

About declaration of conformity :

The conformity declaration file is provided separately

Function	Operation Frequency	Max RF output power:	Limit
BLE	2402-2480 MHz	-11.54dBm	20dBm.



Europe business name: AMZLAB GmbH

Europe business address: Laubenhof 23, 45326 Essen, Germany

Europe phone number: +491745298066

#### Documents / Resources

	<p><a href="#">LETSCOM LCW01 Smart Watch</a> [pdf] User Guide LCW01, 2AW9KLCW01, Smart Watch, LCW01 Smart Watch</p>
--	---