

LEPOWER

LEPOWER A32B
Monitor Arm



LEPOWER A32B Monitor Arm Instruction Manual

[Home](#) » [LEPOWER](#) » LEPOWER A32B Monitor Arm Instruction Manual 

Contents

- [1 LEPOWER A32B Monitor Arm](#)
- [2 PARTS](#)
- [3 Documents / Resources](#)
 - [3.1 References](#)
- [4 Related Posts](#)

LEPOWER

LEPOWER A32B Monitor Arm



Monitor Arm

- LC-EQE-A32B
- VESA Compatible 75×75 100×100
- 32" Max

Contact Information

- Silent Power Electronics GmbH Formerweg 8 47877 Willich Deutschland
- Visit us at www.lc-power.com or contact us at the following address:
- Email: support@lc-power.com

Warnings and Cautions

- Read the entire instruction manual before you start installation and assembly. If you have any questions regarding any of the instructions or warnings, please contact your local distributor.
- This product should only be installed by someone of good mechanical aptitude, who has basic building experience and fully understands this manual.
- Ensure the mounting surface can safely support the combined load of the equipment and all attached hardware and components.
- If mounting to wood wall studs, make sure that mounting screws are anchored into the center of the studs. Use of an "edge to edge" stud finder is highly recommended.
- Always use an assistant or mechanical lifting equipment to safely lift and position equipment.
- Tighten screws firmly, but do not over-tighten. Over-tightening can cause damage to the items, greatly reducing their holding power.
- This product is intended for indoor use only. Using this product outdoors could lead to product failure and personal injury.

Specifications

Model	LC-EQE-A32B
VESA Compatibility	75×75, 100×100
Maximum Screen Size	32"

Installation Instructions

Parts List

- A (x1)
- B (x1)
- C (x1)
- D (x1)
- E (x1)
- F (x1)
- G (x1)
- H (x2)
- I (x1)
- J (x1)
- K (x3)
- L (x1)
- M (x1)
- M-A (x4)
- M-B (x4)
- M-C (x4)

Step-by-Step Instructions

- Step 1
Attach part E to part F using the provided screws.
- Step 2
Clamp Mounting: Attach part C to the edge of the desk using the provided clamp and screws.
Grommet Mounting: Drill a hole in the desk and secure part C using the provided grommet and screws.
- Step 3
Attach part B to part E using the provided screws. Ensure the VESA mount is securely attached to the monitor.
- Step 4
Attach the monitor to the arm assembly using the VESA mount. Ensure all screws are tightened securely.
- Step 5
Adjust the monitor arm to the desired position and tighten all screws to secure the monitor in place.
- Step 6
Ensure the monitor is securely attached and all screws are tightened. Do not exceed the maximum weight

capacity of the monitor arm.

- Step 7

Adjust the monitor arm to the desired height and angle. Ensure the monitor is securely attached and all screws are tightened.

- Step 8

If the monitor does not stay in the desired position, tighten the screws as shown.

FAQ

- **Q: What is the maximum screen size supported by the monitor arm?**

A: The monitor arm supports screens up to 32 inches.

- **Q: What VESA standards are compatible with this monitor arm?**

A: The monitor arm is compatible with VESA 75×75 and 100×100 standards.

- **Q: Can I use this monitor arm outdoors**

A: No, this product is intended for indoor use only.

- **Q: How do I mount the monitor arm to my desk**

A: You can mount the monitor arm using either the clamp mounting method or the grommet mounting method. Detailed instructions are provided in the manual.

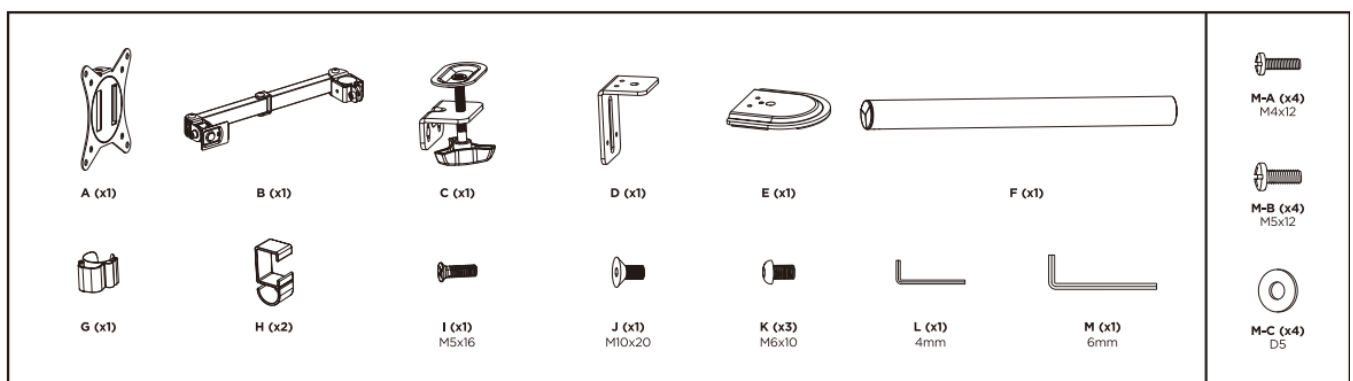
- **Q: What should I do if the monitor does not stay in the desired position**

A: If the monitor does not stay in the desired position, tighten the screws as shown in the manual.

Instruction Manual

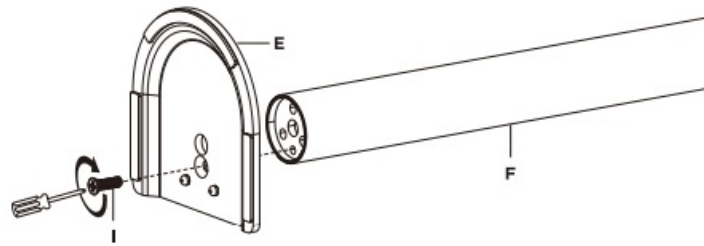


PARTS

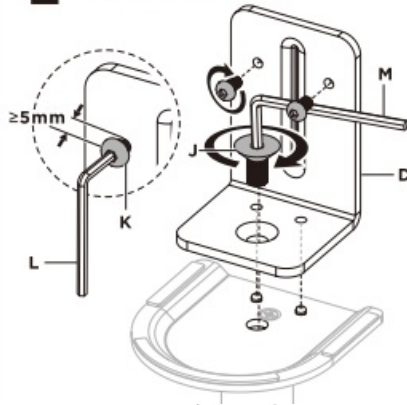


ASSEMBLY

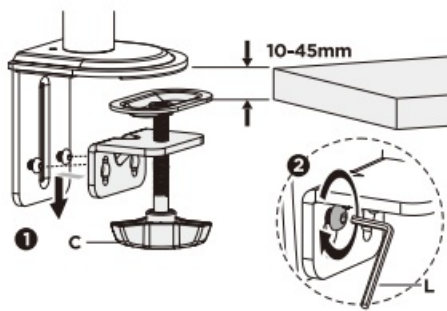
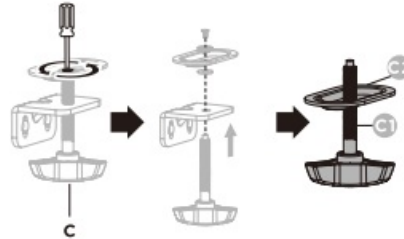
1



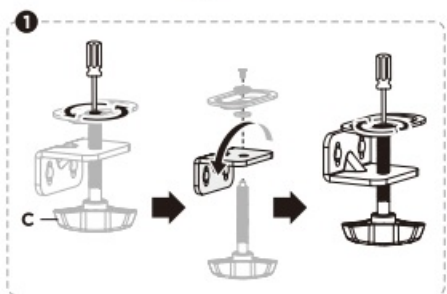
2 Clamp Mounting



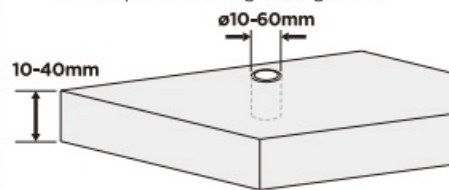
Grommet Mounting



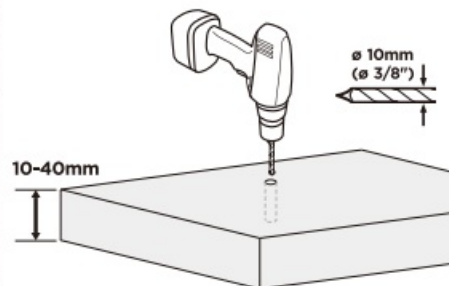
OR

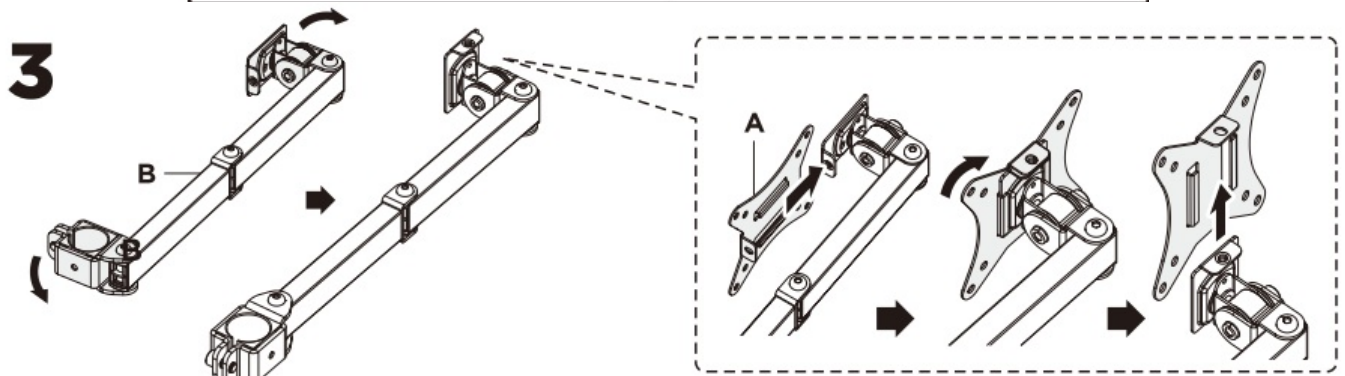
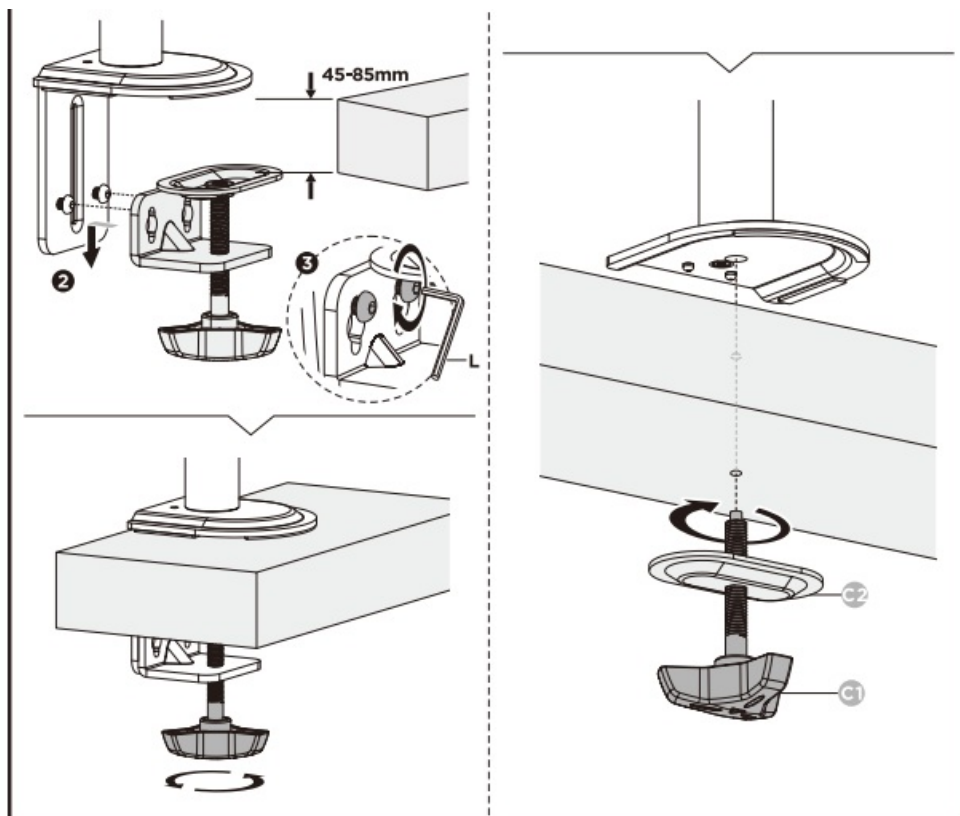


Desktop with Existing Through-Hole.

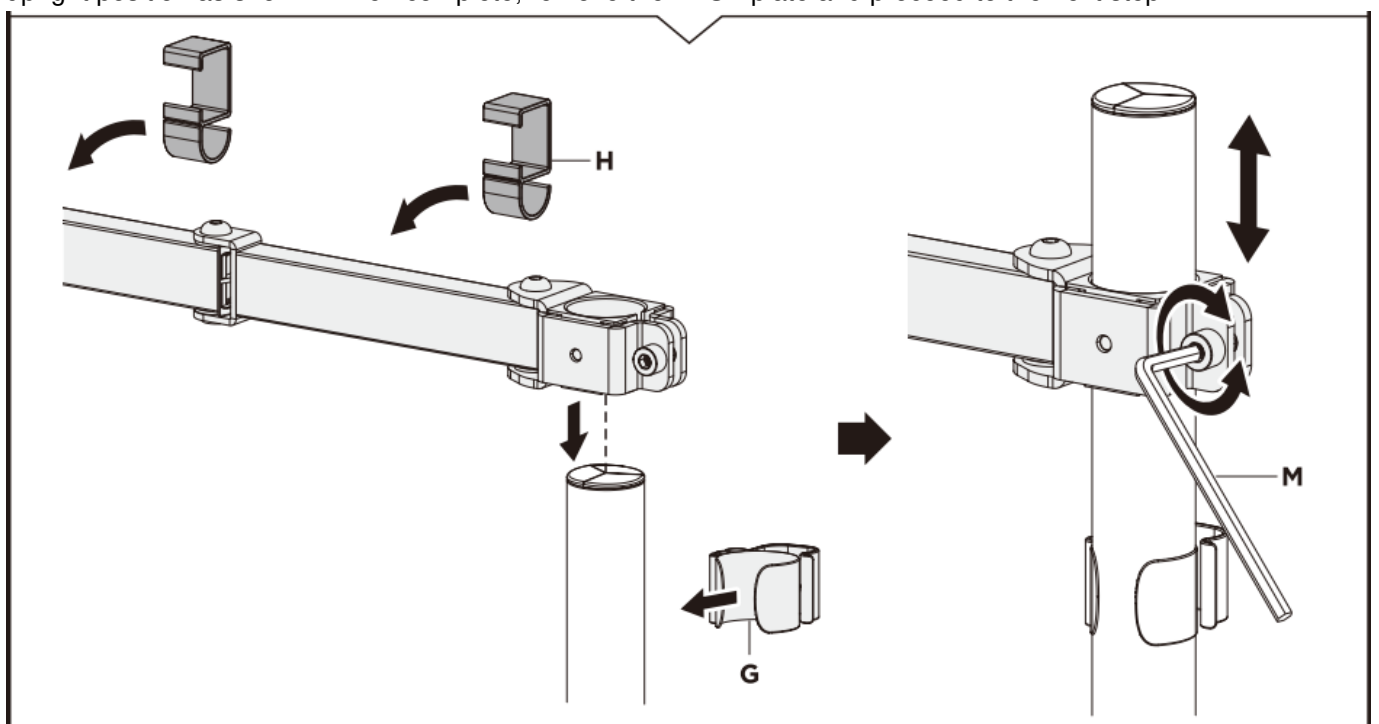


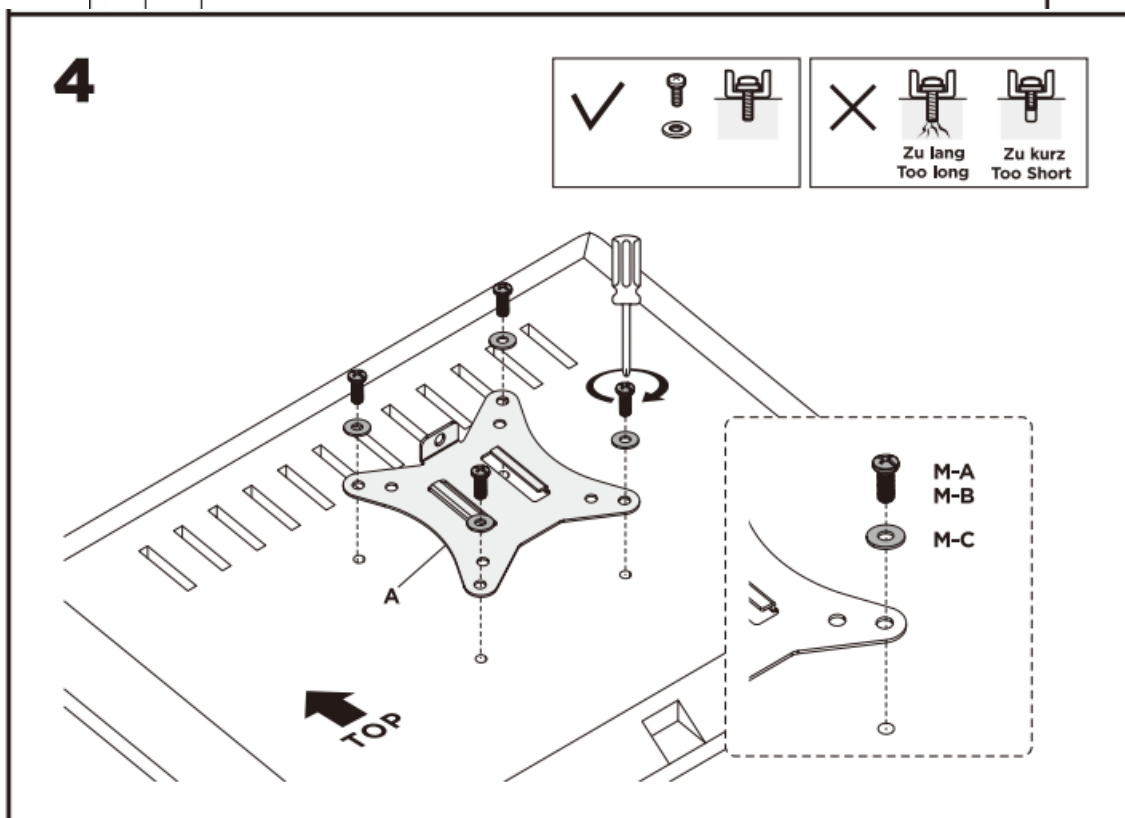
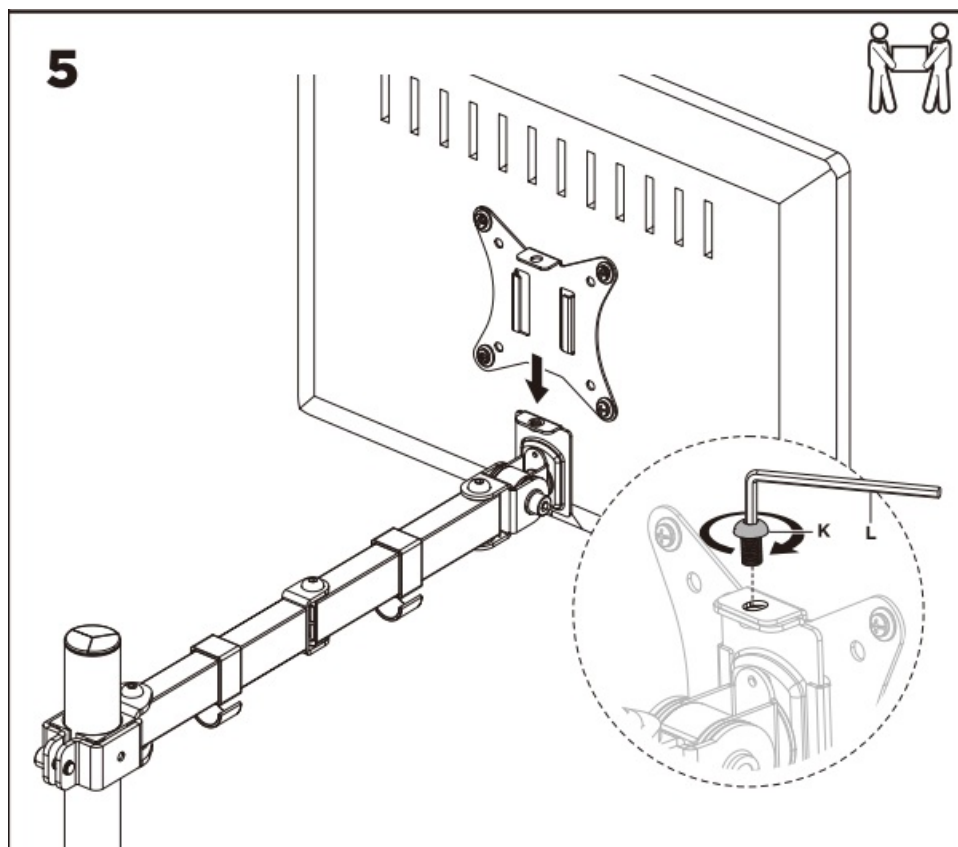
OR

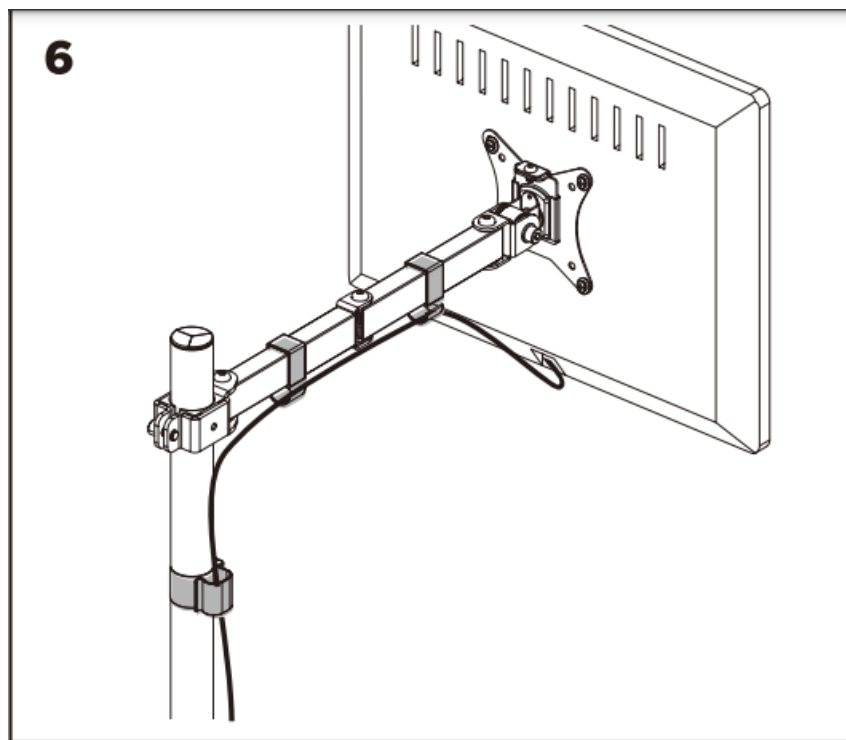




You will need to position the VESA Mounts to an UP position. To do that insert the VESA plate and rotate it to an upright position as shown. When complete, remove the VESA plate and proceed to the next step.



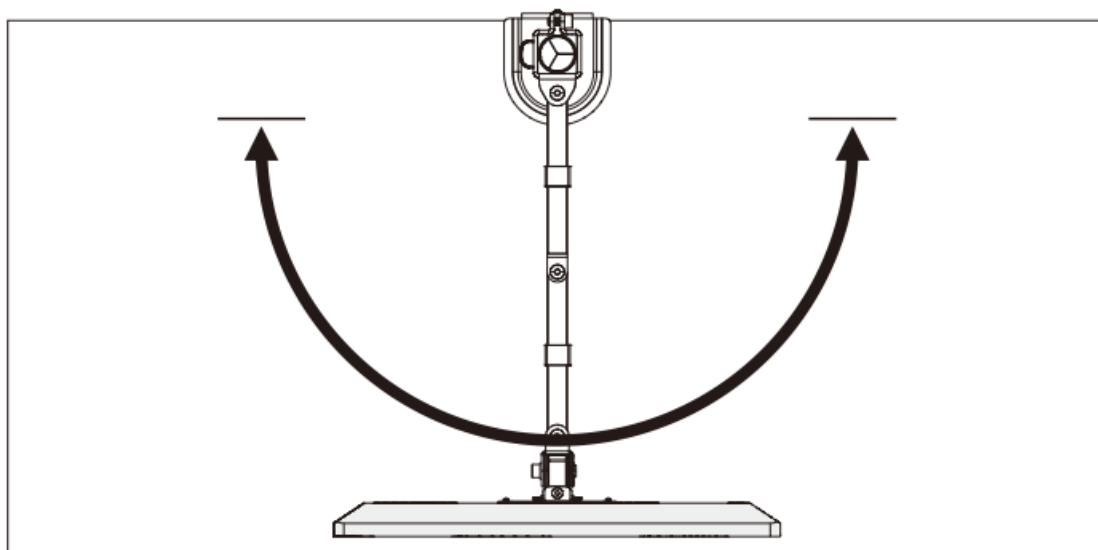


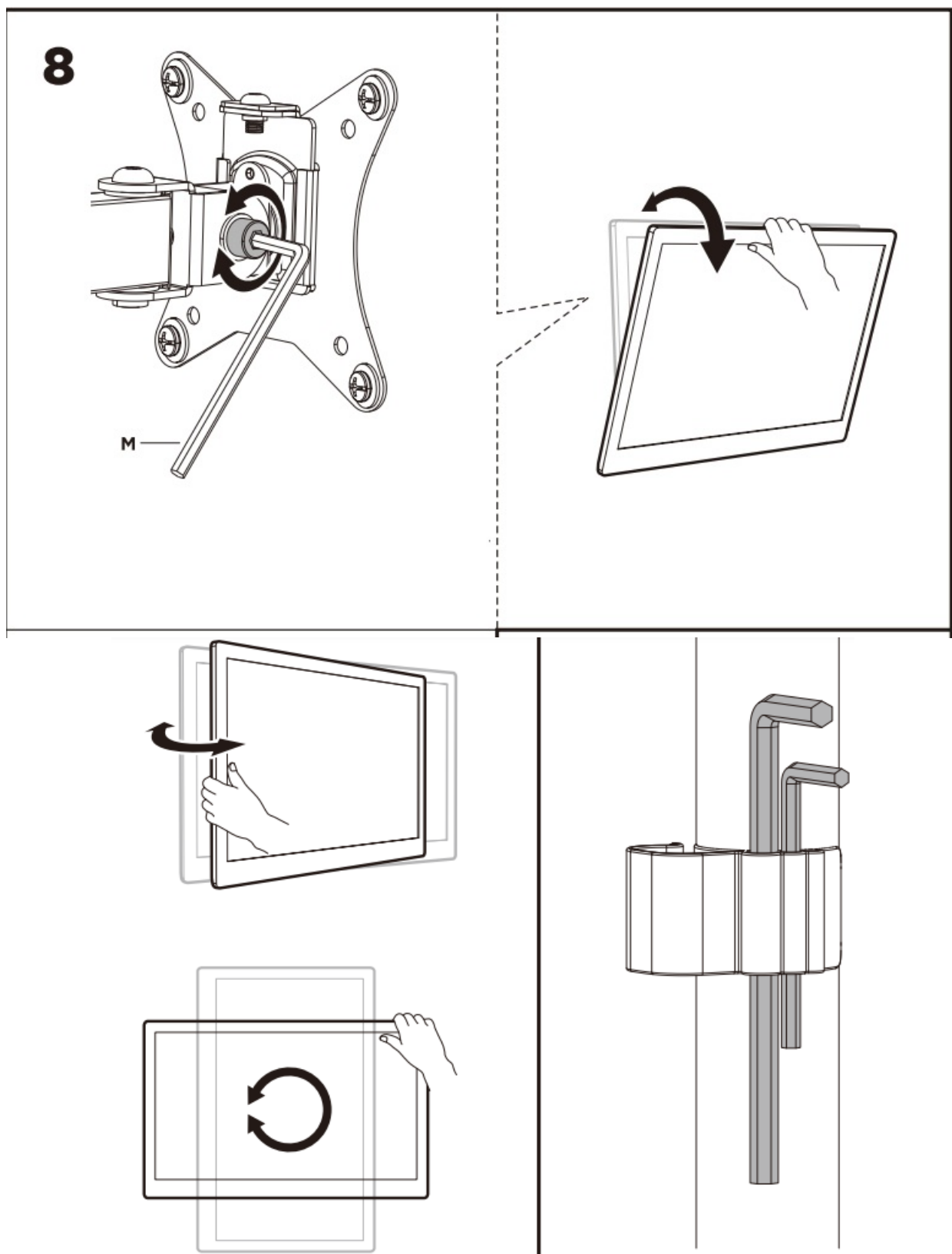


7



CAUTION:
DO NOT use the display beyond the arrow range, avoid tipping.





Read the entire instruction manual before you start installation and assembly. If you have any questions regarding any of the instructions or warnings, please contact your local distributor for assistance.

CAUTION: Use with products heavier than the rated weights indicated may result in instability causing possible injury.

- Please closely follow the assembly instructions. Improper installation may result in damage or serious personal injury.
- Safety gear and proper tools must be used. This product should only be installed by professionals.

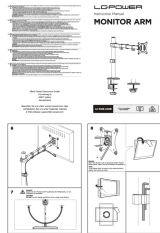
- Make sure that the supporting surface will safely support the combined weight of the equipment and all attached hardware and components.
- Use the mounting screws provided and DO NOT OVER TIGHTEN mounting screws.
- This product contains small items that could be a choking hazard if swallowed. Keep these items away from children.
- **IMPORTANT:** Ensure that you have received all parts according to the component checklist prior to installation. If any parts are missing or faulty, contact your place purchase for a replacement.
- **MAINTENANCE:** Check that the product is secure and safe to use at regular intervals (at least every three months)

Silent Power Electronics GmbH

www.lc-power.com

E-Mail-Addresses : support@lc-power.com

Documents / Resources

	<p>LEPOWER A32B Monitor Arm [pdf] Instruction Manual A32B, LDT66-C012, A32B Monitor Arm, A32B, Monitor Arm, Arm</p>
------------------------------------------------------------------------------------	-----------------------------------------------------------------------------------------------------------------------------------------

References

- [User Manual](#)

[Manuals+](#), [Privacy Policy](#)

This website is an independent publication and is neither affiliated with nor endorsed by any of the trademark owners. The "Bluetooth®" word mark and logos are registered trademarks owned by Bluetooth SIG, Inc. The "Wi-Fi®" word mark and logos are registered trademarks owned by the Wi-Fi Alliance. Any use of these marks on this website does not imply any affiliation with or endorsement.