



Contents [[hide](#)]

- [1 LEOTEK SN-NB01 Plus Lighting Controller](#)
- [2 Specifications](#)
- [3 Product Usage Instructions](#)
- [4 Revision History](#)
- [5 Product History](#)
- [6 FCC regulatory notice](#)
- [7 SN-NB01 Plus](#)
- [8 Installation Notes](#)
- [9 FAQs](#)
- [10 Documents / Resources](#)
 - [10.1 References](#)



LEOTEK SN-NB01 Plus Lighting Controller



Specifications

- **Product Name:** Leotek Lighting Controller (SN-NB01 Plus)
- **Model:** SN-NB01 Plus
- **Manufacturer:** Leotek Networks Inc.
- **Revision:** 1.0
- **Date:** March 2, 2024

Product Usage Instructions

Installation

1. Mount the street light controller to the NEMA 7 base of the light fixture.
2. Confirm whether the connection is complete and assemble, and tighten.

Starting to Use

Once the installation is complete, you can start using the Leotek Lighting Controller by following these steps:

1. Power on the street light.
2. Ensure the controller is properly connected to the light fixture.
3. Refer to the user manual for specific instructions on programming and controlling the lighting.

Notice

1. Leotek Networks Inc. reserves the right to change specifications detailed in this document at any time without notice, and assumes no responsibility for any errors within this document
2. This document contains proprietary technical information that is the property of Leotek Networks inc. and shall not be disclosed to others in whole or in part, reproduced, copied, or used as the basis for design, manufacturing, or sale of apparatus without the written permission of Leotek Networks Inc.

Revision History

Revision	Date	By Whom	Remark
1.0	2024/03/2	Leotek team	<ul style="list-style-type: none">First Release
			<ul style="list-style-type: none">
			<ul style="list-style-type: none">
			<ul style="list-style-type: none">
			<ul style="list-style-type: none">
			<ul style="list-style-type: none">
			<ul style="list-style-type: none">
			<ul style="list-style-type: none">
			<ul style="list-style-type: none">
			<ul style="list-style-type: none">

Product History

Revision	Date	By Whom	Remark
----------	------	---------	--------

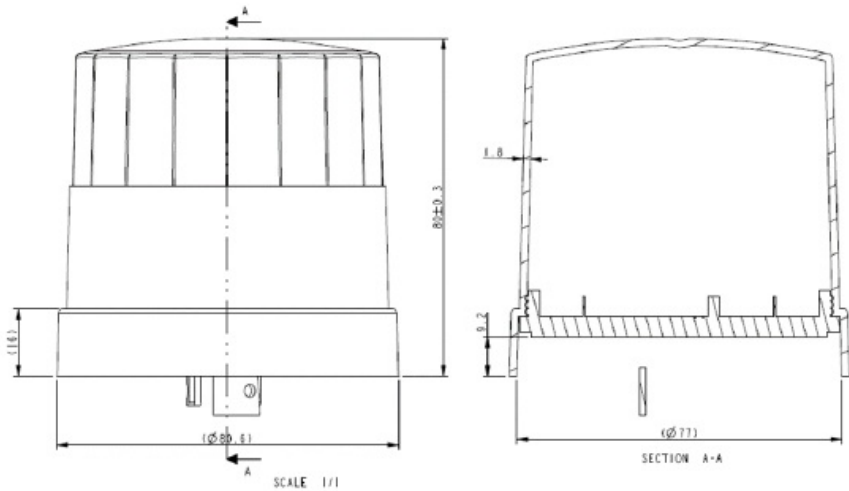
			•
			•
			•

FCC regulatory notice



SN-NB01 Plus

Size

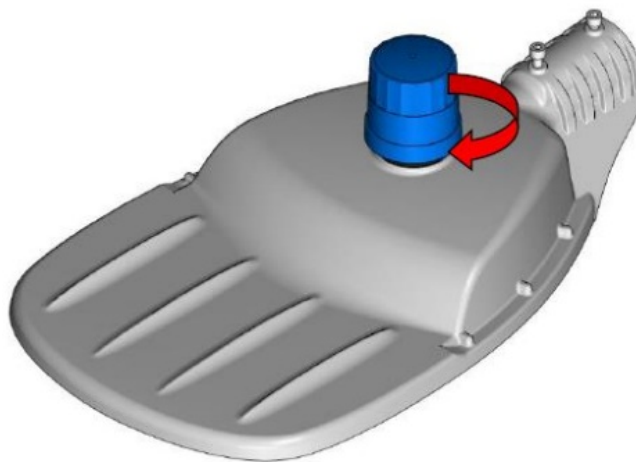


Installation Notes

1. Mount the street light controller to the NEMA 7 base of the light fixture.



2. Confirm whether the connection is complete and assemble, and tighten.



3. Start Using

Warning

This device complies with part 15 of the FCC Rules. Operation is subject to the following two conditions: (1) This device may not cause harmful interference, and (2) this device must accept any interference received, including interference that may cause undesired operation. Changes or modifications not expressly approved by the party responsible for compliance could void the user's authority to operate the equipment.

This equipment has been tested and found to comply with the limits for a Class A digital device, pursuant to part 15 of the FCC Rules. These limits are designed to provide reasonable protection against harmful interference when the equipment is operated in a commercial environment. This equipment generates, uses, and can radiate radio frequency energy and, if not installed and used in accordance with the instruction manual, may cause harmful interference to radio communications. Operation of this equipment in a residential area is likely to cause harmful interference, in which case the user will be required to correct the interference at his own expense. This device should be installed and operated with minimum distance 20 cm between the radiator & your body.

FCC Responsible party info

- **Company name:** LEOTEK Corporation
- **Address:** 1955 Lundy Ave, San Jose, CA 95131
- **Tel or Email address:** Tony.Pan@liteon.com

FAQs

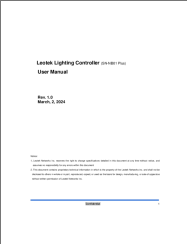
Q: Can I use the Leotek Lighting Controller with any type of street light?

A: The Leotek Lighting Controller (SN-NB01 Plus) is designed to work with street lights that have a NEMA 7 base. Ensure compatibility before installation.

Q: How do I reset the controller if needed?

A: To reset the controller, locate the reset button on the device and press it for 10 seconds. The controller will restart and reset to factory settings.

Documents / Resources

	LEOTEK SN-NB01 Plus Lighting Controller [pdf] User Manual SN-NB01PW, SN-NB01P, SN-NB01 Plus Lighting Controller, SN-NB01 Plus, Lighting Controller, Controller
---	---

References

- [User Manual](#)

LEOTEK

controller, LEOTEK, Lighting Controller, SN-NB01 Plus, SN-NB01 Plus Lighting Controller, SN-NB01P, SN-NB01PW

Leave a comment

Your email address will not be published. Required fields are marked *

Comment *

Name

Email

Website

☐ Save my name, email, and website in this browser for the next time I comment.

Post Comment

Search:

Search

[Manuals+](#) | [Upload](#) | [Deep Search](#) | [Privacy Policy](#) | [@manuals.plus](#) | [YouTube](#)

This website is an independent publication and is neither affiliated with nor endorsed by any of the trademark owners. The "Bluetooth®" word mark and logos are registered trademarks owned by Bluetooth SIG, Inc. The "Wi-Fi®" word mark and logos are registered trademarks owned by the Wi-Fi Alliance. Any use of these marks on this website does not imply any affiliation with or endorsement.

