



## ThinkPad E15 Setup Manual

[Home](#) » [Lenovo](#) » ThinkPad E15 Setup Manual 

### Contents

- [1 Setup Manual](#)
  - [1.1 ThinkPad E15](#)
- [2 Initial Setup](#)
- [3 Overview](#)
- [4 Additional Information](#)
- [5 E-Manual](#)
- [6 Related Posts](#)

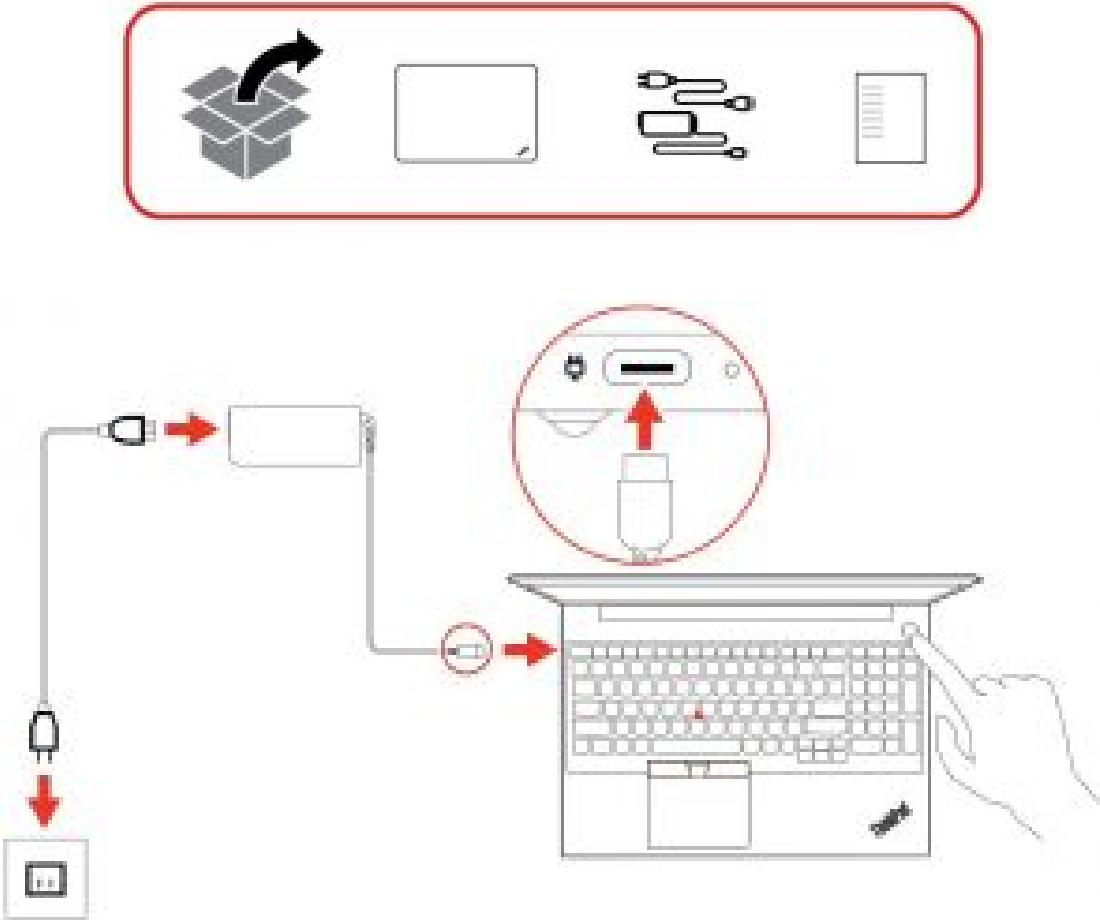
### Setup Manual

# Lenovo

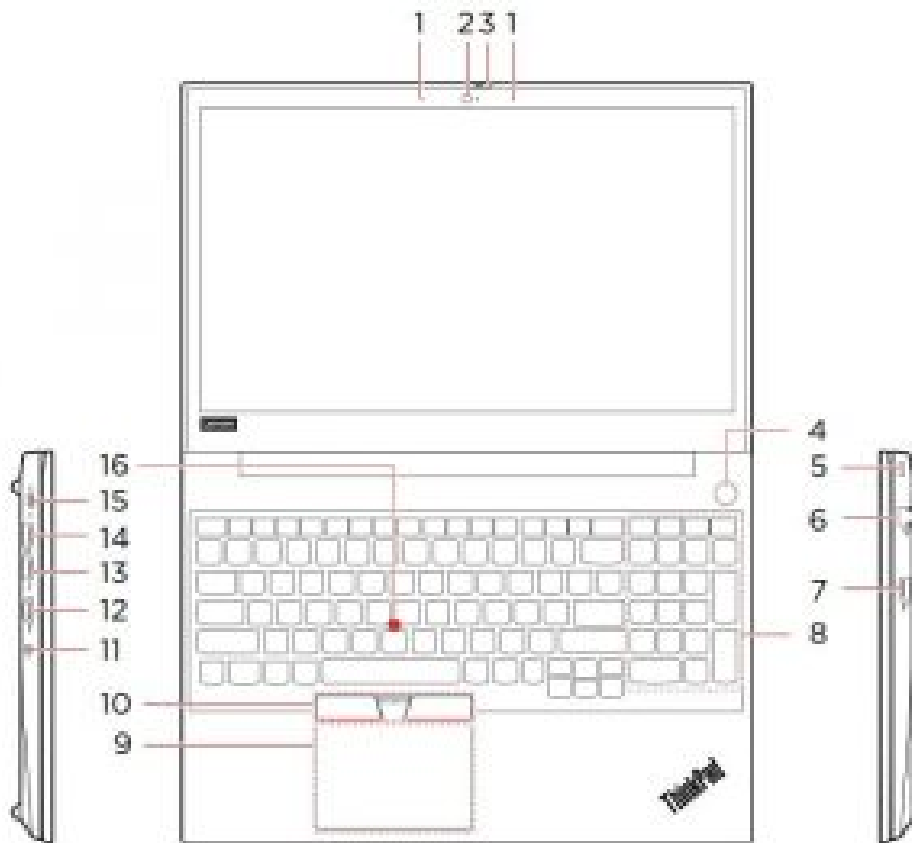


ThinkPad E15

Initial Setup



Overview



1. Microphones
2. Camera
3. ThinkShutter
4. Power button with or without fingerprint reader
5. Security-lock slot
6. Ethernet connector
7. USB 2.0 connector
8. Numeric keypad
9. Trackpad
10. TrackPoint® buttons
11. Audio connector
12. HDMI™ connector
13. USB 3.1 connector Gen 1
14. Always On USB 3.1 connector Gen 1
15. USB-CTM connector
16. TrackPoint pointing stick

Read the statement on USB transfer rate in the User Guide. Refer to the Safety and Warranty Guide for accessing the User Guide.

## Additional Information

### Specific absorption rate for European Union

YOUR DEVICE MEETS INTERNATIONAL GUIDELINES FOR EXPOSURE TO RADIO WAVES.

The Europe 10g Specific Absorption Rate (SAR) limit for mobile devices is 2.0 W/kg. To view your product specific SAR value, go to <https://support.lenovo.com/us/en/solutions/sar>.

If you are interested in further reducing your RF exposure then you can easily do so by limiting your usage or simply keeping the device away from the body.

#### **European Union — compliance with the Radio Equipment Directive**

Hereby, Lenovo (Singapore) Pte. Ltd., declares that the radio equipment type ThinkPad E15 is in compliance with Directive 2014/53/EU.

The full text of the system EU declaration of conformity is available at the following Internet address:

<https://www.lenovo.com/us/en/compliance/eu-doc>

This radio equipment operates with the following frequency bands and maximum radio-frequency power:

Technology	Frequency band [MHz]	Maximum transmit power
WLAN 802.11b/g/n/ax	2400 - 2483.5	< 20 dBm
WLAN 802.11a/n/ac/ax	5150 - 5725	< 23 dBm
WLAN 802.11a/n/ac/ax	5725 - 5875	< 13.98 dBm
Bluetooth BR/EDR/LE	2400 - 2483.5	< 20 dBm

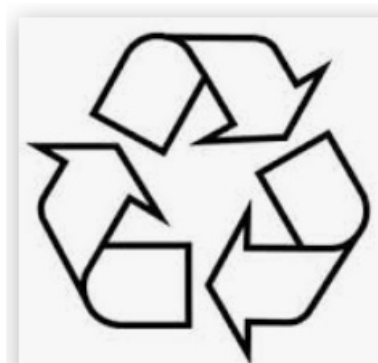


**Second Edition (November 2019)**

**© Copyright Lenovo 2019.**

LIMITED AND RESTRICTED RIGHTS NOTICE: If data or software is delivered pursuant to a General Services Administration "GSA" contract, use, reproduction, or disclosure is subject to restrictions set forth in Contract No. GS-35F-05925.

**Reduce | Reuse | Recycle**



**Read More About This Manual & Download PDF:**

ThinkPad E15 Setup Manual – [Optimized PDF](#)

ThinkPad E15 Setup Manual – [Original PDF](#)

**Questions about your Manual? Post in the comments!**