



ThinkPad E15 Notebook Computer Setup Manual

[Home](#) » [Lenovo](#) » ThinkPad E15 Notebook Computer Setup Manual 

ThinkPad E15 Notebook Computer Setup Manual

ThinkPad E15

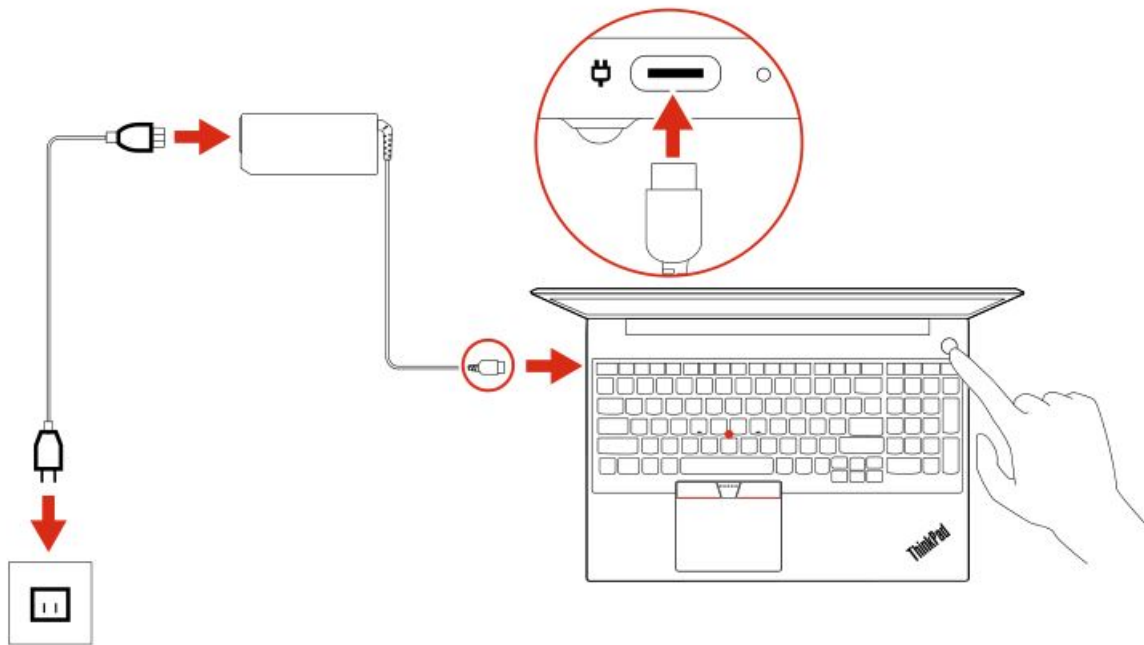
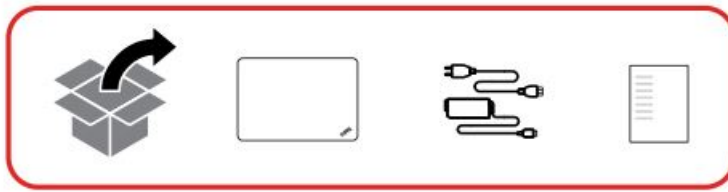
Setup Guide



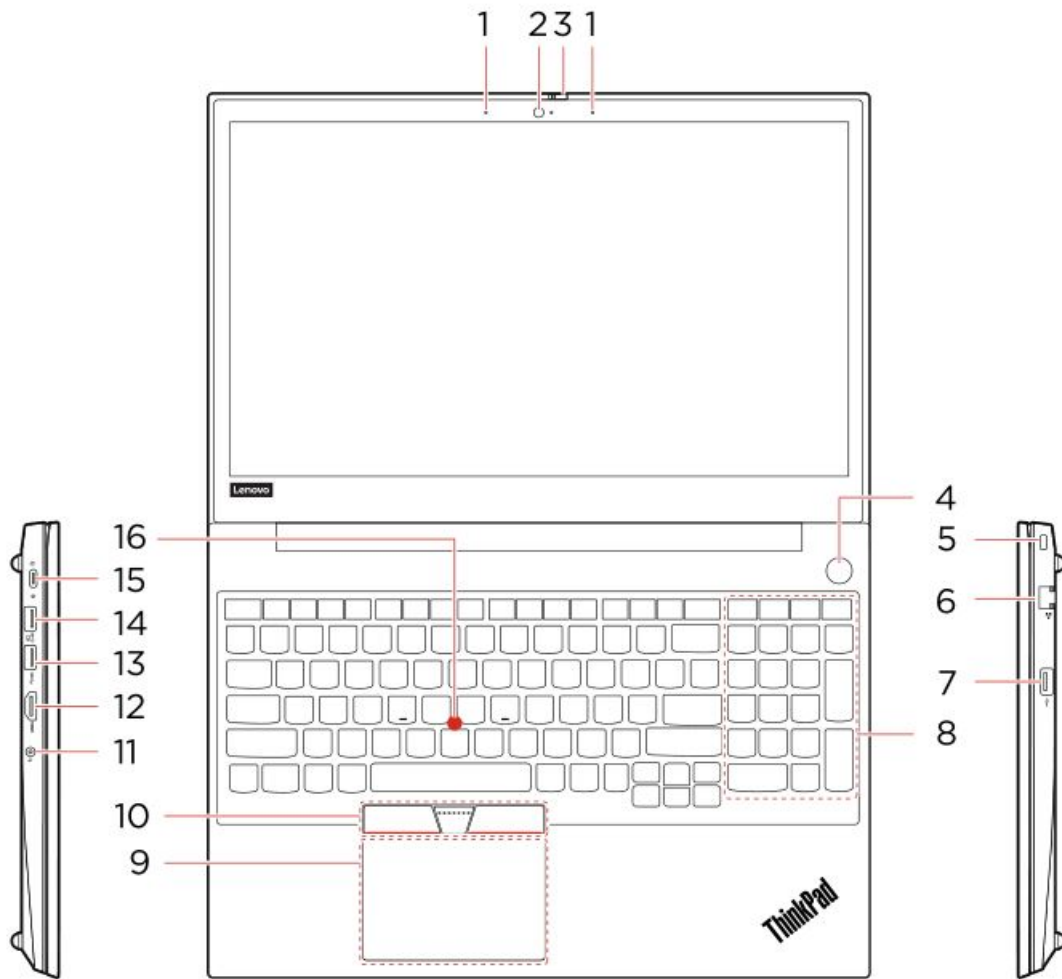
Contents

- [1 Initial Setup](#)
- [2 Overview](#)
- [3 Additional information](#)
- [4 E-manual](#)
- [5 Related Posts](#)

Initial Setup



Overview



1. Microphones
2. Camera
3. * ThinkShutter
4. * Power button/Fingerprint reader
5. Security-lock slot
6. Ethernet connector
7. USB 2.0 connector
8. Numeric keypad
9. Trackpad
10. TrackPoint® buttons
11. Audio connector
12. HDMI™ connector
13. USB 3.1 connector Gen 1
14. Always On USB 3.1 connector Gen 1
15. USB-C™ connector
16. TrackPoint pointing stick

* For selected models



Read the statement on USB transfer rate in the User Guide. Refer to the Safety and Warranty Guide for accessing the User Guide.

Additional information

Specific absorption rate for European Union

YOUR DEVICE MEETS INTERNATIONAL GUIDELINES FOR EXPOSURE TO RADIO WAVES.

The Europe 10g Specific Absorption Rate (SAR) limit for mobile devices is 2.0 W/kg. To view your product specific SAR value, go to <https://support.lenovo.com/us/en/solutions/sar>.

If you are interested in further reducing your RF exposure then you can easily do so by limiting your usage or simply keeping the device away from the body.

European Union — compliance with the Radio Equipment Directive

Hereby, Lenovo (Singapore) Pte. Ltd., declares that the radio equipment type ThinkPad E15 is in compliance with Directive 2014/53/EU.

The full text of the system EU declaration of conformity is available at the following Internet address:
<https://www.lenovo.com/us/en/compliance/eu-doc>

This radio equipment operates with the following frequency bands and maximum radio-frequency power:

Technology	Frequency band [MHz]	Maximum transmit power
WLAN 802.11b/g/n/ax	2400 - 2483.5	< 20 dBm
WLAN 802.11a/n/ac/ax	5150 - 5725	< 23 dBm
WLAN 802.11a/n/ac/ax	5725 - 5875	< 13.98 dBm
Bluetooth BR/EDR/LE	2400 - 2483.5	< 20 dBm

E-manual



https://support.lenovo.com/docs/e14_e15

First Edition (September 2019 9))
© Copyright Lenovo 2019 9. .

LIMITED AND RESTRICTED RIGHTS NOTICE: If data or software is delivered pursuant to a General Services Administration "GSA" contract, use, reproduction, or disclosure is subject to restrictions set forth in Contract No. GS-35F-05925.

Reduce | Reuse | Recycle



Printed in China

ThinkPad E15 Notebook Computer Setup Manual – [Optimized PDF](#)
ThinkPad E15 Notebook Computer Setup Manual – [Original PDF](#)

Manuals+.