

Lenovo LPDDR4X Chromebox Micro For Digital



Lenovo LPDDR4X Chromebox Micro For Digital Instructions

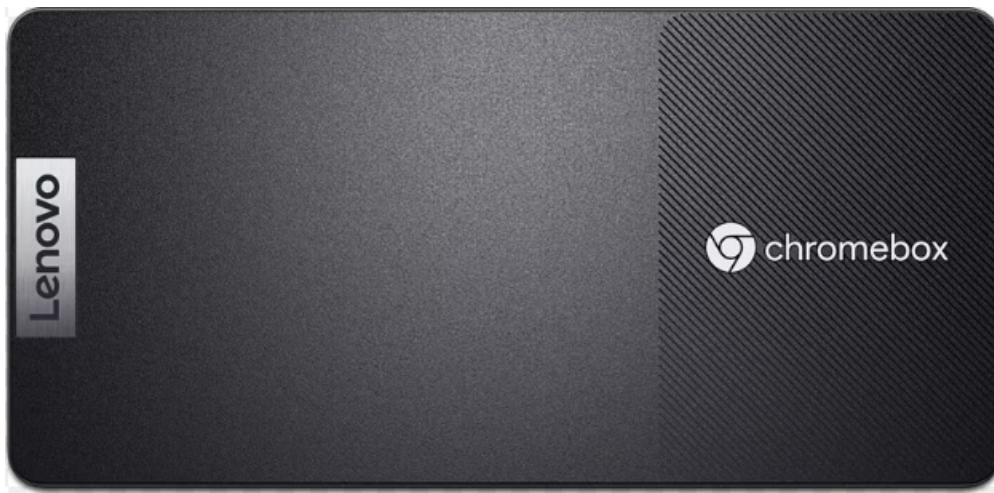
[Home](#) » [Lenovo](#) » [Lenovo LPDDR4X Chromebox Micro For Digital Instructions](#) 

Contents

- [1 Lenovo LPDDR4X Chromebox Micro For Digital](#)
- [2 Product Specifications](#)
- [3 Product Usage Instructions](#)
- [4 Frequently Asked Questions](#)
- [5 Lenovo Chromebox Micro Solution Industries](#)
- [6 Lenovo Chromebox Micro](#)
- [7 Lenovo Chromebox Micro:](#)
- [8 Lenovo OEM Solutions Powering what's next in digital signage experiences](#)
- [9 Product Specifications](#)
- [10 Instorescreen: Purpose Built](#)
- [11 Benefits of ChromeOS](#)
- [12 Device Management](#)
- [13 Documents / Resources](#)
 - [13.1 References](#)
- [14 Related Posts](#)



Lenovo LPDDR4X Chromebox Micro For Digital



Product Specifications

- Product Name: Lenovo Chromebox Micro
- Size: Micro
- Performance: Macro

Product Usage Instructions

Lenovo Chromebox Micro Solution Industries

The Lenovo Chromebox Micro is a powerful device designed for various industries and environments. It simplifies information delivery and enhances user experience with state-of-the-art technology.

Retail:

- Wayfinding
- In-store advertisements
- Kiosks
- Digital menu boards
- Drive-through displays

Healthcare & Hospitality Displays:

- Virtual concierge
- Wayfinding
- Infotainment
- Waiting room displays

Corporate:

- Logos and wayfinding
- Product and service information
- Presentation tools for conference rooms

Lenovo Chromebox Micro: Retail Solutions

In retail environments, the Lenovo Chromebox Micro enhances the customer experience through various display solutions:

1. **Branding:** Logos and animations for corporate branding.
2. **Wayfinding:** Real-time, dynamic, and interactive digital displays for directions.
3. **Information:** Inform and advertise products, promotions, services, and events.
4. **Point of Sale:** POS displays to highlight products, promotions, and encourage impulse purchases.
5. **Kiosks:** Interactive touchscreen kiosks for user convenience and service optimization.

Frequently Asked Questions

Q: Can the Lenovo Chromebox Micro be used for educational purposes?

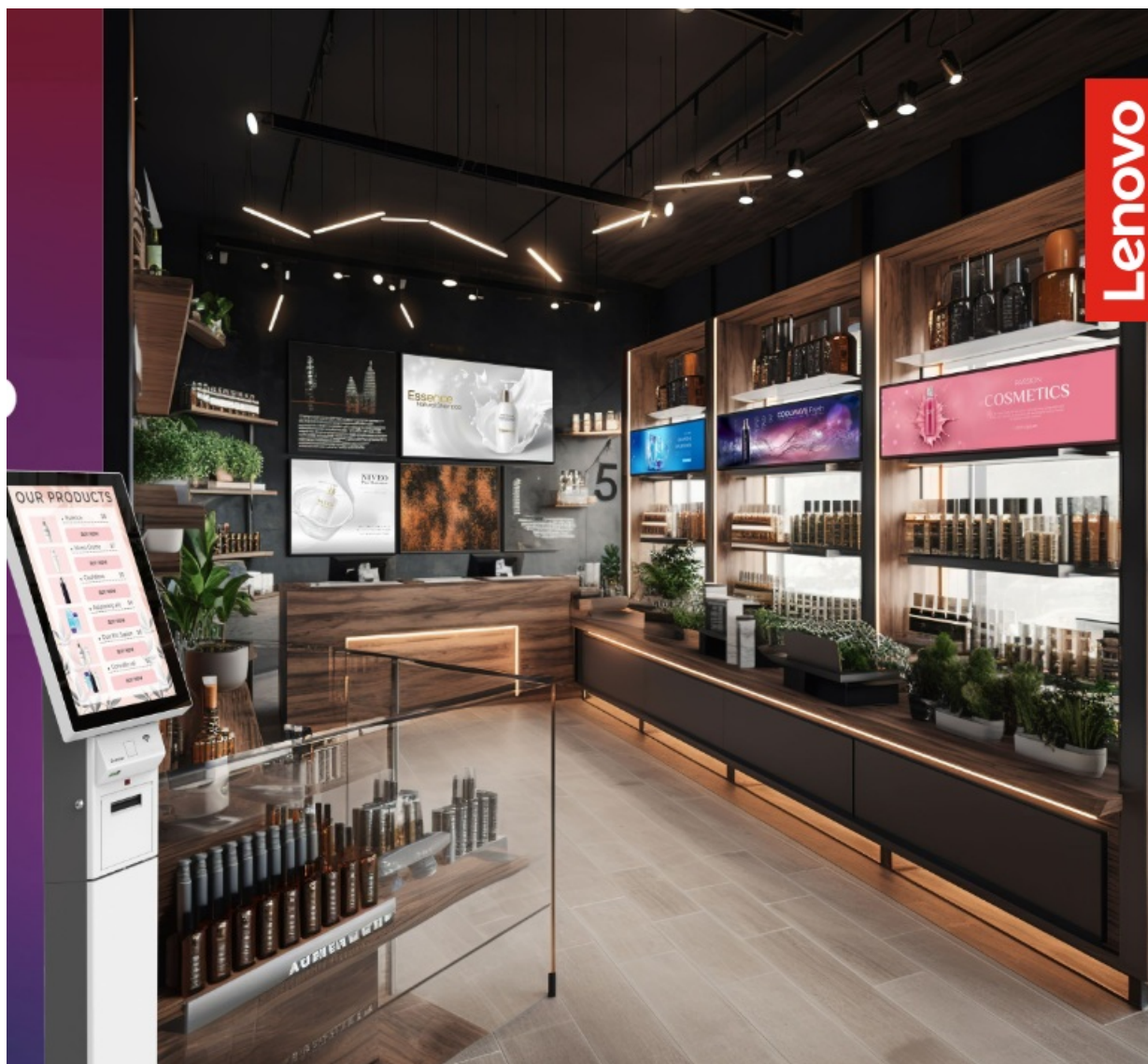
A: Yes, the Lenovo Chromebox Micro can display school/university logos, campus communication, schedules, and emergency procedures. It also supports interactive and non-interactive LCDs for classrooms and lecture halls.

Q: What industries can benefit from using the Lenovo Chromebox Micro?

A: The Lenovo Chromebox Micro is versatile and suitable for industries such as retail, healthcare, hospitality, corporate settings, airports, entertainment venues, control rooms, surveillance applications, and education institutions.

Lenovo Chromebox Micro Solution Guide

Micro Size, Macro Performance



Lenovo



Lenovo Chromebox Micro Solution Industries

- The Lenovo Chromebox Micro is a marvel of technological design and innovation, it is the powerhouse behind an extensive array of digital solutions tailored for a diverse range of industries and environments.
- The advanced features and robust performance make it ideal for enhancing customer engagement and streamlining operations across numerous environments. From retail to corporate sectors, and from educational institutions to transportation hubs, the Lenovo Chromebox Micro is pivotal in delivering dynamic and effective digital communications. Its applicability extends to specialized areas like healthcare, hospitality, and high-stakes control rooms, highlighting its adaptability and efficiency in meeting diverse digital display needs.
- This device not only simplifies the delivery of information and promotional content but also elevates the user experience through its state-of-the-art technology.



Retail:

Wayfinding, in-store advertisements, kiosks, digital menu boards, and drive-through displays at retail outlets and restaurants.



Healthcare & Hospitality Displays:

Virtual concierge, wayfinding, infotainment, and waiting room displays in healthcare and casino settings.



Corporate:

Logos, wayfinding, product and service information in receptions, lobbies, banks, and manufacturing units. Presentation tools for conference and meeting rooms.



Airport & Transportation:

Flight, gate, and baggage info, wayfinding, and promotion displays in airports.



Entertainment:

Promotions, schedules, entrance displays, and infotainment across large venues, worship houses, and museums.



Control & Surveillance:

Data visualization for control rooms, network centers, and high-performance security/surveillance applications.



Education:

School/university logos, campus communication, schedules, and emergency procedure displays. Interactive and non-interactive LCDs for classrooms and lecture halls.

Lenovo Chromebox Micro

Retail Solutions

In the contemporary retail environment, stores leverage diverse displays to enhance the customer experience. Branding elements, both inside and outside, solidify corporate identity, while digital wayfinding tools guide customers effortlessly. Informational and POS displays spotlight promotions and products, nudging impulse purchases. Interactive kiosks offer convenience, merging service with technology. Meanwhile, end-cap displays transform the shopping journey, and decorative elements elevate the store's atmosphere. Additionally, communication tools ensure that staff remain cohesive and well-informed, optimizing the overall in-store shopping experience.



1. Branding

For corporate branding, logos and animations.

2. Wayfinding

Digital Displays for directions can be real-time, dynamic and interactive.

3. Information

Inform and advertise products, promotions, services and events.

4. Point of Sale

POS Displays can be used to draw attention to products, promotions or offers and encourage impulse purchases as customers finalize their transactions.

5. Kiosks

Interactive touchscreen kiosks are versatile and adaptable, offering users convenience while optimizing service delivery for businesses and institutions.

6. End-cap and Shelf

Transforms shopping into a dynamic experience while spotlighting products and encouraging impulse purchases.

7. Decorative

Primarily serves aesthetic purposes aiming to enhance the visual appeal of the environment.

8. Employee Communications

Corporate communication displays in the workplace can lead to more informed, engaged and cohesive teams.

Lenovo Chromebox Micro:

Other Vertical Solutions

The Lenovo Chromebox Micro is the driving force behind advanced digital displays in various industries. This device enables interactive learning through whiteboards in education, streamlines check-ins with self-service kiosks in travel, and enhances operational oversight with monitor and control displays in manufacturing. It also improves employee management with check-in displays and delivers timely information in waiting areas. The Lenovo Chromebox Micro is essential for efficient communication and management across diverse sectors.



1. Interactive Whiteboards

Touch-sensitive displays that allow users to write, draw, and interact with content directly on the screen.

2. Campus and workplace Communications

Displays can be visual communication tools used within institutions to convey information, announcements, and events.

3. **Waiting Rooms**

Placed in reception or waiting areas, providing visitors with information, entertainment, or updates while they await their appointment or service.

4. **Check-in Kiosks**

Self-service terminals that allow guests or passengers to register, obtain boarding passes or tickets, and manage their bookings without manual assistance.

5. **Transport**

Gate and baggage displays found at transportation hubs provide passengers with real-time updates on travel status, departure/arrival gates, and baggage claim locations.

6. **Monitor and Control**

Essential for helping operators monitor and manage manufacturing processes. They provide real-time data on machinery performance, production metrics, and system health.

7. **Employee Check-in**

A digital interface designed for employees to mark their attendance facilitating efficient time tracking.

Lenovo OEM Solutions Powering what's next in digital signage experiences

Lenovo OEM Solutions enable brands around the world to bring innovative products—built with Lenovo's reliable hardware and backed by our OEM services and capabilities—to market.

Founded on the pillars of predictability, innovation, and partnership, Lenovo OEM serves to bridge the gap between what our OEM customers are currently capable of, and what they envision themselves achieving. By closely aligning our solutions to a customer's specific needs, we accelerate success and help you deliver world-class service.

We leverage our extensive network of vetted 3rd party product and software partnerships to provide end-to-end turnkey solutions that can be customized or ready to deploy. Delivering more innovation, efficiency, and faster time to profit for your business.

We achieve this in three simple ways:

- **Predictable Deployment / Implementation Services**

Accelerate your time to productivity. We'll help you streamline implementation and management of new technologies so you can get back to business.

- **Innovative End-to-End Hardware**

Lenovo is your partner for innovative, dependable hardware, specialized for your unique requirements, so you can focus on what makes your solution remarkable.

- **Reliable Partner & Solution Services**

You can count on us to be your trusted advisor. We'll work with you to develop comprehensive solutions that stand the test of time.




Lenovo OEM Solutions can offer



Multi-Level Customization

Lenovo offers customization at every turn to ensure that your embedded hardware suits your needs.



Global Specialization

Lenovo's global presence grants you access to the highest level of service, no matter where you are in the world.



Extended Lifecycle Management

Lenovo is dedicated to extending the life of our machines and providing enhanced support services.



E2E Program Management

Lenovo supports your end-to-end solution stages, from pre-design to transition management.

Product Specifications



- **Processor**

Intel Celeron N4500, dual core Burst: 2.8GHz

Base: 1.1GHz

- **Connectivity**

Wi-Fi 6

Bluetooth 5.2

Gigabit Ethernet

- **Weight and Volume**

350g, 0.25L

- **Memory**

8GB LPDDR4X

- **Storage**

32GB eMMC

- **Ports**

2 x USB-C 3.2 Gen 1 2 x USB-A 3.2 Gen 1 1 x HDMI 1.4

1 x RJ45

1 x Audio Jack

- **Dimensions**

163 x 79 x 19.7mm

- **Security and Durability**

Commercial grade and MIL-Spec 24/7 operation, easy-on

Humid resistance and dust proof H1 security chip

- **Operating System**

ChromeOS

- **Serviceability and Manageability**

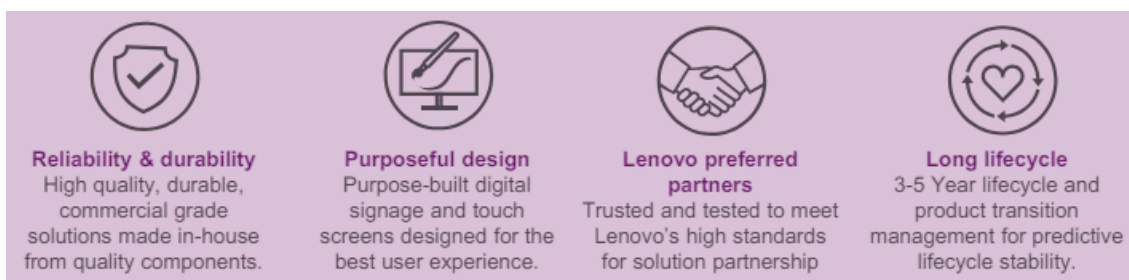
Lenovo Warranty: 1 year Warranty Extension: 3 years Chrome Enterprise Upgrade Kiosk & Signage Upgrade

Instorescreen: Purpose Built

Digital Signage

Technology in retail has in the past been based on consumer products such as TVs, computer monitors or at best a few custom application screens. With Smart Retail 2.0 any technology that we offer has been developed specifically for retail environments, with the help of our retail experts. There are no compromises or cost cutting corners, we have invested heavily in order to provide you with the best products possible.

Instorescreen Core Principles



Instorescreen and Lenovo OEM Benefits

- **Full OEM Portfolio of Offerings**

- Commercial product offerings including PCs, Smart Edge Gateways, Tablets, Servers, Storage, Networking & 3rd Party offerings.
- Extended Life Program: providing 3- 5 years, lifecycle across multiple platforms.
- Global warranty and premier services.

- **Global OEM Specialization**

- Dedicated OEM sales specialists with global and regional coverage.
- Dedicated engineering resources focused on innovation for your solution development needs.
- Vertical positioning and industry expertise.

- **OEM Capabilities**

- E2E program management for your solution.
- Multi-level customization services, including blank chassis, bezels, packaging, logos, documentation, WW Label, imaging and global deployment services.
- Strategic technology partnerships, including Intel IOTG Solution Alliance, RFP Ready Kits and Market Ready Solutions.

Instorescreen inFLEX Displays:

Designed for the Lenovo Chromebox Micro



inFLEX Display

InFlex Display is the latest product series from Instorescreen.

- 15.6" or 21.5" size
- Full HD LCD IPS Panel
- Hardened, easy to clean protective glass
- Durable and sturdy metal Enclosure
- Commercial grade (24/7 usage)

The Perfect Fit

At 6.42 x 3.11 x 0.78 Inches the Lenovo Chromebox Micro can fit comfortably secured at the rear of the 15.6 or 21.5 Inch inflex Display ensuring unhindered access to all ports, while offering a streamlined and integrated appearance.

Benefits of ChromeOS

ChromeOS delivers a seamless, fully integrated solution for customer and employee-facing kiosks and digital signage. With a secure operating system, broad range of devices, optimized app solutions and remote management, ChromeOS can help modernize your business.

- **Help for almost any business**

Tools to enhance information access, speed up transactions, and streamline workflows across various industries, from retail to restaurants.

- **Ensure system security and data safety**

- No ransomware reported on a ChromeOS device, ever.

- ChromeOS blocks executables, prevents apps and extensions from modifying the OS, and has tamper-proof hardware.

- **Reduce maintenance and improve reliability**

Devices boot directly into kiosk and digital signage mode and launch your app. You can control updates and opt into a long-term support channel to ensure reliability.

- **Easily monitor, control and manage devices**

Manage your devices from anywhere. Use the Google Admin console to deploy apps, monitor the health of devices, capture system logs, reboot, take screenshots, remotely control through Chrome Remote Desktop and more.

Device Management

ChromeOS is not just a robust operating system for devices; it's a comprehensive solution for efficiently and securely managing an entire digital ecosystem. Chrome Enterprise Upgrade and Kiosk & Signage Upgrade are two upgrade options tailored to optimize business kiosks and digital signage.

Kiosk & Signage Upgrade

Tailored for single-application, purpose-built devices like kiosks and digital signs. It focuses on simplified remote management, security for public devices, and specific functionalities suited for kiosks and digital signage.

Chrome Enterprise Upgrade

A comprehensive solution for managing a wide range of ChromeOS devices within an organization. It offers advanced security and policy options, extensive device management capabilities, and support for a broader range of enterprise needs.

In summary, both services are built around ChromeOS, offer management features and have 24/7 IT admin support. However, "Kiosk and Signage Upgrade" is tailored for single-application, public-facing devices like kiosks and digital signs. In contrast, "Chrome Enterprise Upgrade" is designed for broader enterprise use, providing extensive management and security features for a range of ChromeOS devices within an organization.



End-to-end integrated solution: Chrome Enterprise Recommended:

Let's talk about what's possible with Lenovo Chromebox Micro

Get in touch to find out how Lenovo OEM Solutions and Lenovo Chromebox Micro can accelerate time to market for your solutions and help to establish valuable, sustainable customer relationships.

[Contact Us](#)



Documents / Resources



[Lenovo LPDDR4X Chromebox Micro For Digital](#) [pdf] Instructions

LPDDR4X Chromebox Micro For Digital, LPDDR4X, Chromebox Micro For Digital, Micro For Digital, For Digital, Digital

References

- [User Manual](#)

This website is an independent publication and is neither affiliated with nor endorsed by any of the trademark owners. The "Bluetooth®" word mark and logos are registered trademarks owned by Bluetooth SIG, Inc. The "Wi-Fi®" word mark and logos are registered trademarks owned by the Wi-Fi Alliance. Any use of these marks on this website does not imply any affiliation with or endorsement.