



Lenovo KB299W Go Wireless Split Keyboard User Guide

[Home](#) » [Lenovo](#) » Lenovo KB299W Go Wireless Split Keyboard User Guide 

Contents

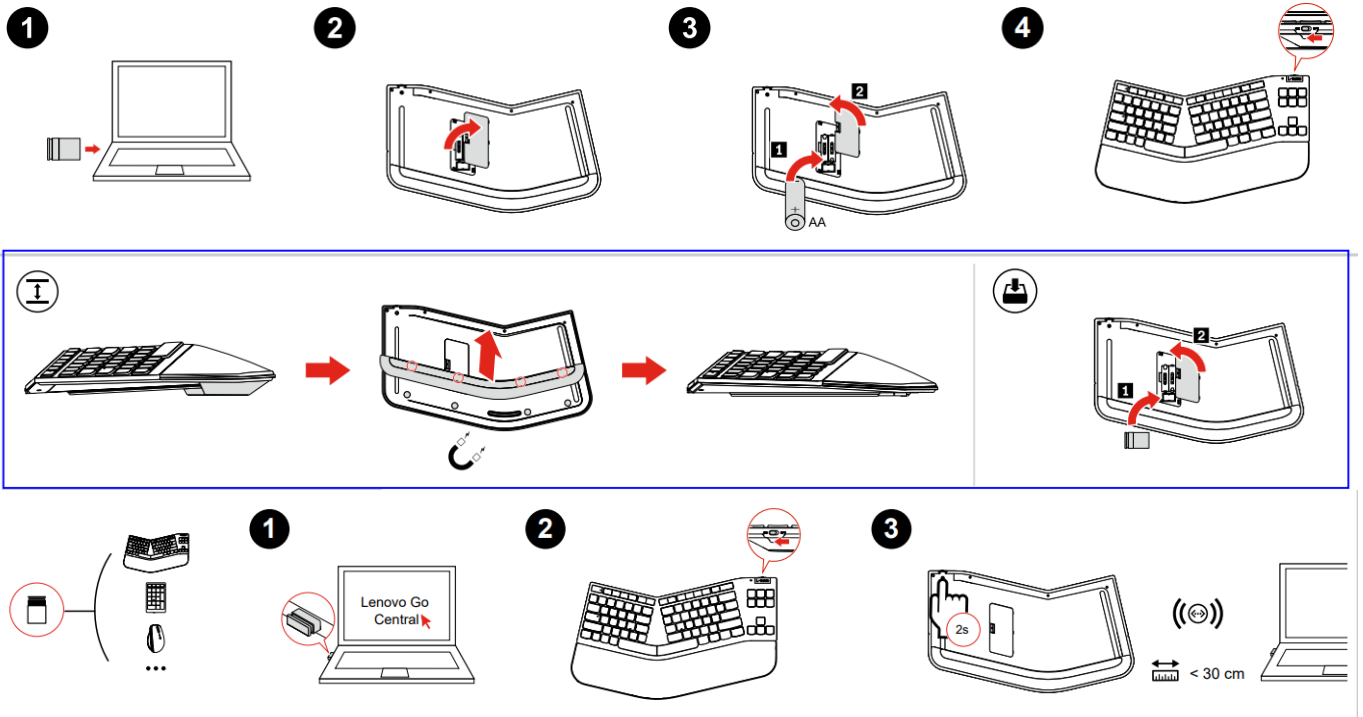
- [1 Lenovo KB299W Go Wireless Split Keyboard](#)
- [2 INSTALLATION INSTRUCTION](#)
- [3 FCC STATEMENT](#)
- [4 Documents / Resources](#)
 - [4.1 References](#)
- [5 Related Posts](#)

Lenovo

Lenovo KB299W Go Wireless Split Keyboard



INSTALLATION INSTRUCTION



Note: The cork color might be slightly different due to its natural color variation.

FCC STATEMENT

Federal Communications Commission (FCC) Supplier's Declaration of Conformity This equipment has been tested and found to comply with the limits for a Class B digital device, pursuant to Part 15 of the FCC Rules. These limits are designed to provide reasonable protection against harmful interference in a residential installation. This equipment generates, uses, and can radiate radio frequency energy and, if not installed and used in accordance with the instructions, may cause harmful interference to radio communications. However, there is no guarantee that interference will not occur in a particular installation. If this equipment does cause harmful interference to radio or television reception, which can be determined by turning the equipment off and on, the user is encouraged to try to correct the interference by one or more of the following measures:

- Reorient or relocate the receiving antenna.
- Increase the separation between the equipment and receiver.
- Connect the equipment into an outlet on a circuit different from that to which the receiver is connected. for help.

Lenovo is not responsible for any radio or television interference caused by using other than recommended cables and connectors or by unauthorized changes or modifications to this equipment. Unauthorized changes or modifications could void the user's authority to operate the equipment. This device complies with Part 15 of the FCC Rules. Operation is subject to the following two conditions: (1) this device may not cause harmful interference, and (2) this device must accept any interference received, including interference that may cause undesired operation. Industry Canada Compliance Statement

CAN ICES-003(B)/NMB-003(B)

This device complies with Industry Canada licence-exempt RSS standard(s). Operation is subject to the following two conditions: (1) this device may not cause interference, and (2) this device must accept any interference, including interference that may cause undesired operation of the device.

- Responsible Party:

- Lenovo (United States) Incorporated 7001 Development Drive
- Morrisville, NC 27560
- Email: FCC@lenovo.com

Documents / Resources



[Lenovo KB299W Go Wireless Split Keyboard](#) [pdf] User Guide
KB299W, Go Wireless Split Keyboard

References

- [Lenovo configurator](#)
- [Lenovo Go Accessories - Reference Guide - Lenovo Support US](#)
- [Lenovo Go Wireless Split Keyboard - Overview and Service Parts - Lenovo Support US](#)
- [Regulatory Compliance | UK Declaration of Conformity | Lenovo US](#)