



Lenovo Go USB-C Wireless Mouse User Guide

[Home](#) » [Lenovo](#) » Lenovo Go USB-C Wireless Mouse User Guide

Contents [[hide](#)]

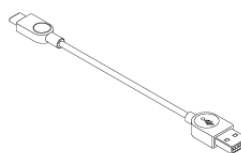
- 1 [Lenovo Go USB-C Wireless Mouse](#)
- 2 [IN THE BOX](#)
- 3 [CHARGING](#)
- 4 [Mouse modeOpen](#)
- 5 [Call mode \(MicrosoftTeams\)](#)
- 6 [Lenovo Unified Pairing Receiver](#)
- 7 [Safety information](#)
- 8 [Built-in rechargeable battery notice](#)
- 9 [Documents / Resources](#)
 - 9.1 [References](#)
- 10 [Related Posts](#)



Lenovo Go USB-C Wireless Mouse

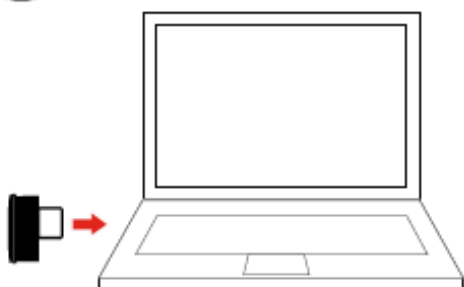


IN THE BOX



CHARGING

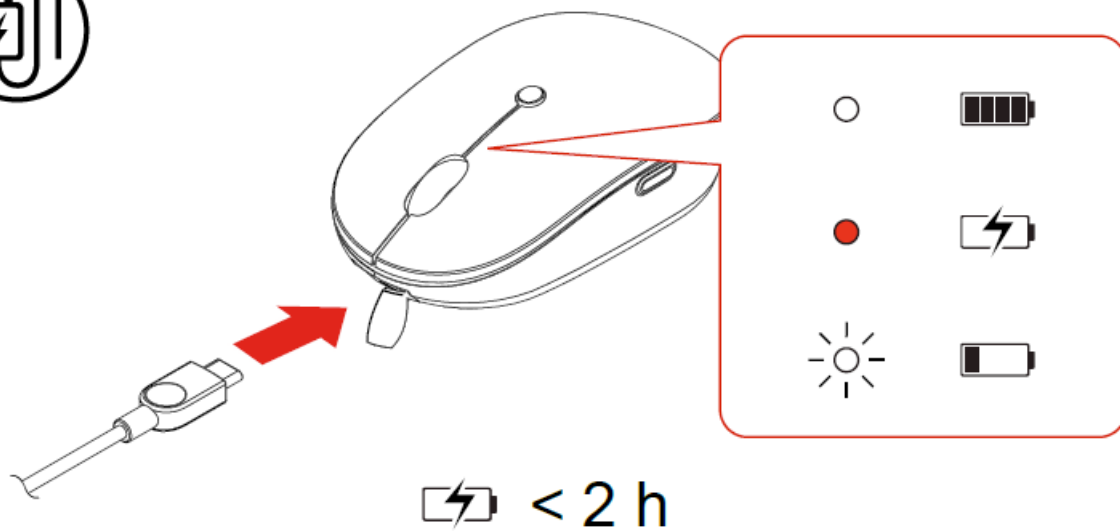
1



2



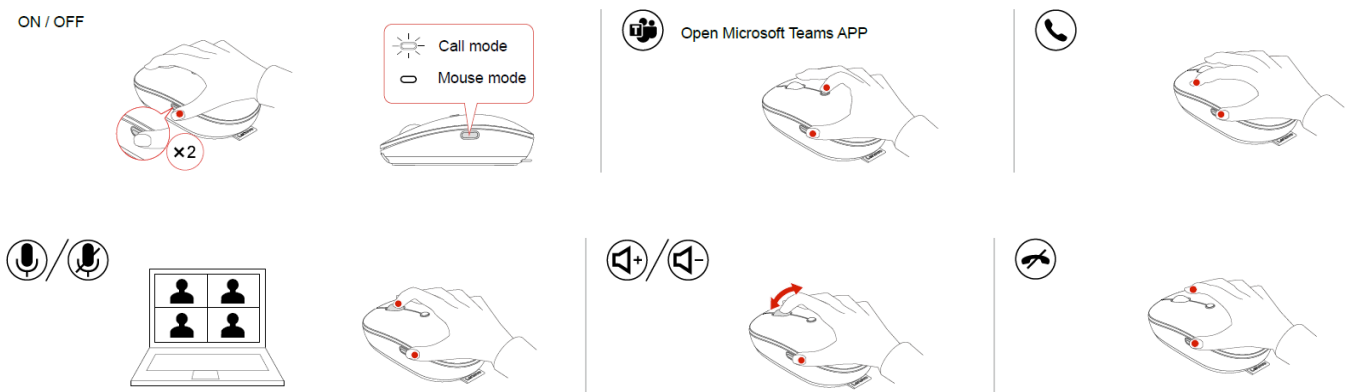
DPI



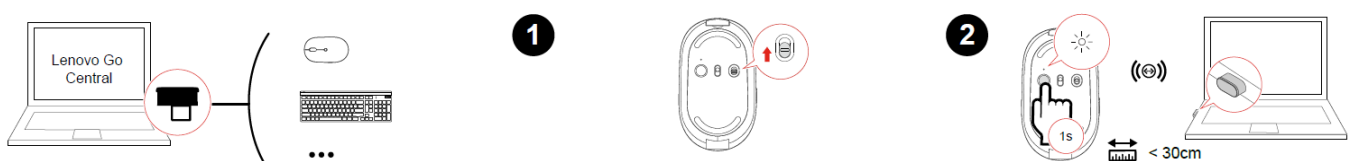
Mouse modeOpen



Call mode (MicrosoftTeams)



Lenovo Unified Pairing Receiver



Safety information

The operating temperature range for the product is between 0°C (32°F) and 40°C (104°F).

General battery notice

DANGER

Batteries supplied by Lenovo for use with your product have been tested for compatibility and should only be replaced with approved parts. Except the battery specified by Lenovo, a disassembled or modified battery is not covered by the warranty. Battery abuse or mishandling can cause overheating, liquid leakage, or an explosion. To avoid possible injury, do the following:

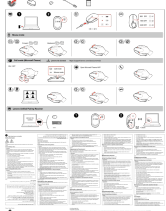
- Do not open, disassemble, or service any battery.
- Do not crush or puncture the battery.
- Do not short-circuit the battery, or expose it to water or other liquids.
- Keep the battery away from children.
- Keep the battery away from fire.
- Do not leave the battery in an extremely high-temperature environment or an extremely low air pressure environment.
- Stop using the battery if it is damaged, or if you notice any discharge or the buildup of foreign materials on the battery leads. We recommend that the batteries be charged about once every three months to prevent overcharge.
- Do not put the battery in trash that is disposed of in landfills. When disposing of the battery, comply with local laws or regulations.

Built-in rechargeable battery notice

DANGER

- Do not attempt to replace the internal rechargeable lithium batteries.
- Replacement of the battery must be done by a Lenovo-authorized repair facility or technician.
- Only recharge the battery strictly according to instructions included in the product documentation.
- Lenovo-authorized repair facilities or technicians recycle Lenovo batteries according to local laws and regulations.

Documents / Resources

	<p>Lenovo Go USB-C Wireless Mouse [pdf] User Guide Go USB-C Wireless Mouse, Go Wireless Mouse, Wireless Mouse, USB-C Wireless Mouse, USB-C Mouse, Go Mouse, Mouse</p>
---	---

References

- [Lenovo configurator](#)
- [Lenovo Go Accessories - Reference Guide - Lenovo Support US](#)
- [Lenovo Go USB-C Wireless Mouse - Overview and Service Parts - Lenovo Support US](#)
- [Regulatory Compliance | Personal Computer Safety | Lenovo US](#)
- [Regulatory Compliance | Lenovo US](#)

- [L Regulatory Compliance | EU Declaration of Conformity | Lenovo US | Lenovo US](#)
- [L Regulatory Compliance | UK Declaration of Conformity | Lenovo US](#)