



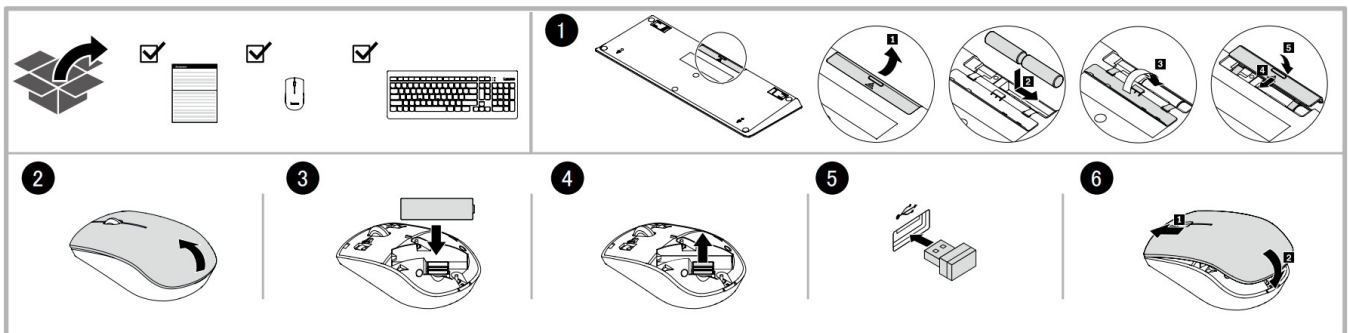
Lenovo Essential Wireless Keyboard and Mouse Combo User Manual

[Home](#) » [Lenovo](#) » Lenovo Essential Wireless Keyboard and Mouse Combo User Manual 



Essential Wireless Keyboard and Mouse Combo
User Manual

<https://support.lenovo.com>



<http://www.lenovo.com/safety>

Lenovo provides electronic manuals for a greener planet. For detailed product information, refer to the electronic manuals. For product settings, download and install the latest device driver. To obtain the regulatory notice and device driver, go to <http://www.lenovo.com/support/keyboards>.

Notes:

- The product is supported only on Windows® 7, Windows 8, Windows 8.1, or Windows 10 operating systems.
- For the Windows 8.1 and Windows 10 operating systems, you can use the Fn+F9 key combination to quickly access the window for computer settings. However, for the Windows 7 operating system, the Fn+F9 key

combination has no function by default.

Reduce



Contents

- [1 Compliance information](#)
- [2 Wireless-radio compliance information](#)
- [3 Export Classification Notice](#)
- [4 Documents / Resources](#)
 - [4.1 References](#)
- [5 Related Posts](#)

Compliance information

The latest compliance information is available at: <https://www.lenovo.com/compliance>

Electronic emission notices

The following information refers to the Lenovo Essential Wireless Keyboard and Mouse Combo.
Federal Communications Commission Declaration of Conformity

Keyboard – KBRFBU71A

Mouse – MORFKHOA

USB Receiver – MORFFHL-DA

This equipment has been tested and found to comply with the limits for a Class B digital device, pursuant to Part 15 of the FCC Rules. These limits are designed to provide reasonable protection against harmful interference in a residential installation. This equipment generates, uses, and can radiate radio frequency energy and, if not installed and used in accordance with the instructions, may cause harmful interference to radio communications. However, there is no guarantee that interference will not occur in a particular installation. If this equipment does cause harmful interference to radio or television reception, which can be determined by turning the equipment off and on, the user is encouraged to try to correct the interference by one or more of the following measures:

- Reorient or relocate the receiving antenna.
- Increase the separation between the equipment and receiver.
- Connect the equipment into an outlet on a circuit different from that to which the receiver is connected.
- Consult an authorized dealer or service representative for help.

Lenovo is not responsible for any radio or television interference caused by using other than specified or recommended cables and connectors or by unauthorized changes or modifications to this equipment. Unauthorized changes or modifications could void the user's authority to operate the equipment.

This device complies with Part 15 of the FCC Rules. Operation is subject to the following two conditions: (1) this device may not cause harmful interference, and (2) this device must accept any interference received, including interference that may cause undesired operation. Responsible Party:

Lenovo (United States) Incorporated 1009 Think Place – Building One



Industry Canada Compliance Statement

CAN ICES-3(B)/NMB-3(B)



Battery recycling information for Taiwan



Wireless-radio compliance information

Product models equipped with wireless communications comply with the radio frequency and safety standards of any country or region in which they have been approved for wireless use.

Besides this document, ensure that you read the Regulatory Notice for your country or region before using the wireless devices. To obtain a PDF version of the Regulatory Notice, go to <http://www.lenovo.com/support/keyboards>.

Brazil wireless-radio compliance information

This equipment is not protected against harmful interference and may not cause interference with duly authorized systems.

- For the Lenovo Essential Wireless Keyboard



- For the Lenovo Essential Wireless Mouse



- For the USB receiver of the Lenovo Essential Wireless Mouse



Singapore wireless-radio compliance information

Complies with
IMDA Standards
DB102306

Export Classification Notice

This product is subject to the United States Export Administration Regulations (EAR) and has an Export Classification Control Number (ECCN) of 5A992.c. It can be re-exported except to any of the embargoed countries

in the EAR E1 country list.

Product information for China

Trademarks

LENOVO and the LENOVO logo are trademarks of Lenovo.

Windows is a trademark of the Microsoft group of companies.

All other trademarks are the property of their respective owners.

© 2018 Lenovo.



SP40Q11098

Fourth Edition (August 2018)

© Copyright Lenovo 2017, 2018.

LIMITED AND RESTRICTED RIGHTS NOTICE: If data or software is delivered pursuant to a General Services Administration “GSA” contract, use, reproduction, or disclosure is subject to restrictions set forth in Contract No. GS-35F-05925.

Documents / Resources

	Lenovo Essential Wireless Keyboard and Mouse Combo [pdf] User Manual KKBRFBU71A, EMJKKBRFBU71A, Essential Wireless Keyboard, Mouse Combo, Wireless Keyboard
--	--

References

- [Lenovo configurator](#)
- [İzmir Adapa Bilgi Sistemleri A.Ş.-Kurumsal Donanım Çözümleri](#)
- [BDH Bilişim Destek Hizmetleri A.Ş.](#)
- [Bilgi Birikim Sistemleri | anasayfa](#)
- [Bilsistek Bilgi Sistemleri](#)
- [BSD Bilgisayar](#)
- [Home - Devoteam Turkey](#)
- [Egebimtes - Dijital dönüşüm için güvenilir çözüm ortağınız](#)
- [INTERCOMP | İşinizi En Hızlı Büyütmenin Yolu, Bilişimde Doğru Çözüm Ortağınız](#)
- [Keyboards and Numeric Keypads - Reference Guide - Lenovo Support US](#)
- [lenovo.com/support/keyboards](#)
- [Peritus Bilgisayar Sistemleri Sanayi ve Ticaret Ltd. Şti](#)
- [Anasayfa | Promet Bilgi Sistemleri A.Ş.](#)
- [Seri Bilgi Teknolojileri](#)
- [Lenovo Support | Drivers, Troubleshooting, Warranty, Repair | Lenovo Support US](#)
- [Regulatory Compliance | Lenovo US](#)