



# LENNOX M0STAT64Q-2 Indoor Unit Programmable Controller Instruction Manual

[Home](#) » [Lennox](#) » LENNOX M0STAT64Q-2 Indoor Unit Programmable Controller Instruction Manual 

## Contents

- [1 LENNOX M0STAT64Q-2 Indoor Unit Programmable Controller](#)
- [2 WARNING](#)
- [3 Specifications](#)
- [4 Shipping and Packing List](#)
- [5 General](#)
- [6 Dimensions](#)
- [7 Wiring Connections](#)
- [8 Installation](#)
- [9 Display](#)
- [10 Description of Butt](#)
- [11 Setup](#)
- [12 Operation](#)
- [13 Timer and Schedules](#)
- [14 Troubleshooting Fault Codes](#)
- [15 Documents / Resources](#)
- [16 Related Posts](#)



**LENNOX M0STAT64Q-2 Indoor Unit Programmable Controller**



## WARNING

This manual must be left with the owner for future reference.

Improper installation, adjustment, alteration, service or maintenance can cause property damage, personal injury or loss of life.

Installation and service must be performed by a licensed professional HVAC installer (or equivalent) or service agency.

## Specifications

|                     |                    |
|---------------------|--------------------|
| Input voltage       | 5 VDC              |
| Ambient temperature | 23~110°F (-5~43°C) |
| Ambient humidity    | RH40%~RH90%        |

**IMPORTANT** Frequent changes to operating mode may cause system malfunction. Allow at least one minute between mode changes to allow the system to stabilize.

## Shipping and Packing List

Package 1 of 1 catalog number 22U20 contains:

- 1 – Wired Controller
- 1 – Lithium battery
- 3 – Screws (mount to wall)

- 2 – Screws (mount to J-box)
- 2 – Plastic spacers (J-box)
- 1 – Connection Cable A with connector for all indoor units
- 1 – Connection Cable B with connector for MMDA/B, MCFA/B, M22A and M33A/B/C indoor units
- 1 – Connection Cable C with connector for MWMA/B indoor units
- 1 – Connection Cable D for MWMC indoor unit
- 1 – Installation and operation manual

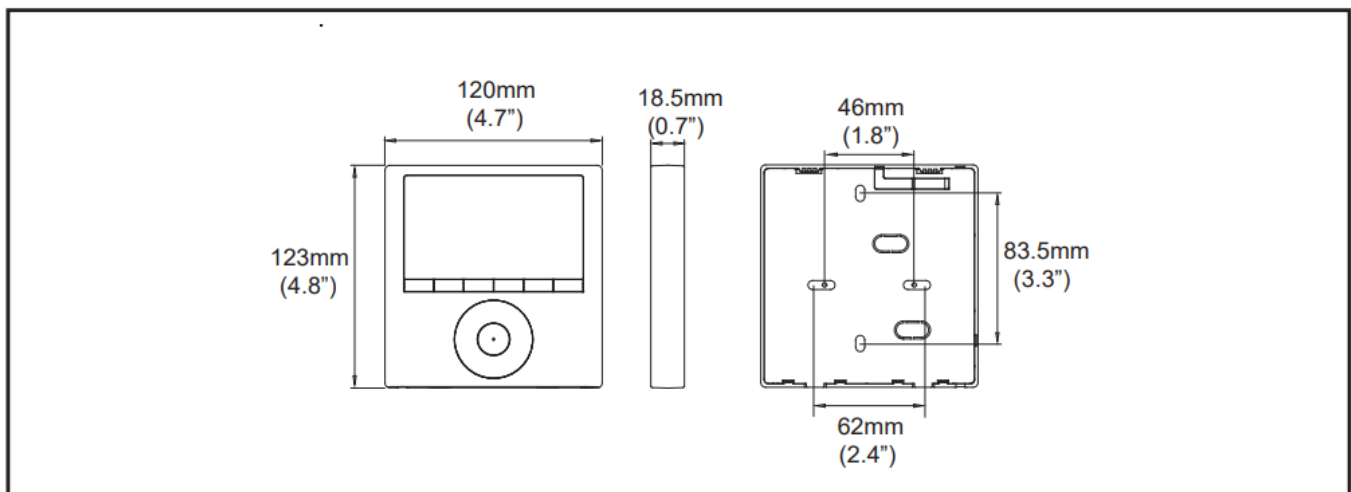
## General

The M0STAT64Q is a wired programmable local controller for mini-split indoor units with convenient timed schedules for daily operation. These instructions are intended as a general guide and do not supersede local codes in any way. Consult authorities having jurisdiction before installation.

## Requirements

Be sure that power supply has been turned off before beginning installation. This controller should be used only as described in this manual. Do not install the controller on outside walls (where there is unconditioned space on opposite side of wall) or in locations where direct sunlight may be present.

## Dimensions



**Figure 1. M0STAT64Q Dimensions**

## Wiring Connections

### WARNING

Be sure that power supply has been turned off before beginning installation. Do not operate controller with wet hands.

**CAUTION** Clean controller using a clean, damp cloth. Do not spray cleanser on or around controller. Do not install controller in areas where heavy oil, vapor, or gases containing sulfur may exist or the controller may be damaged.

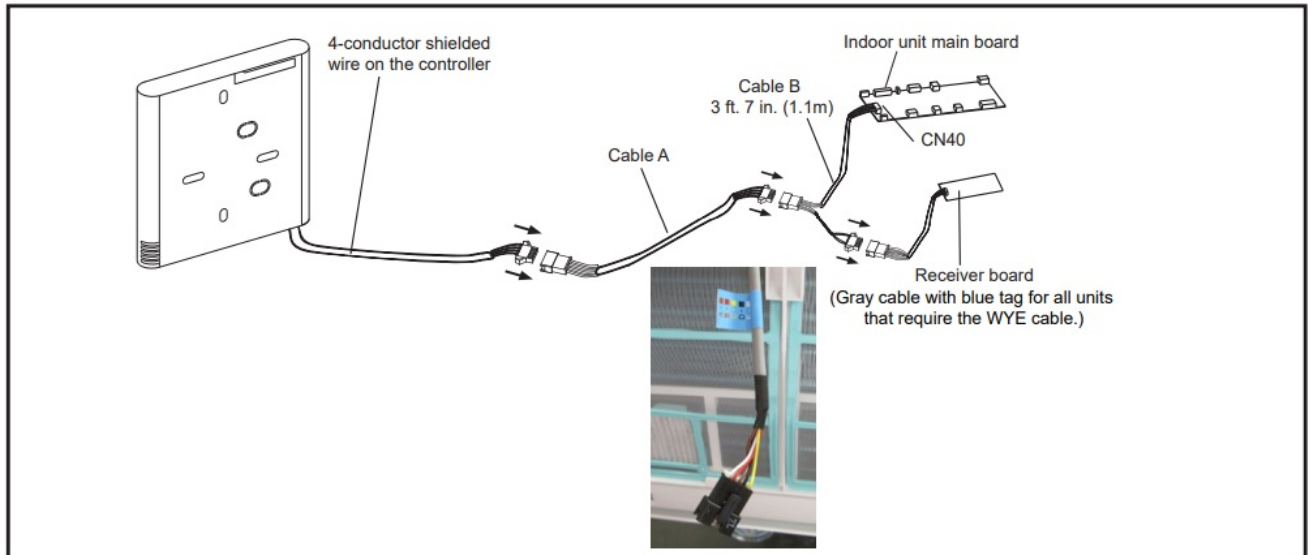
**IMPORTANT** The provided cables must be used. Do not use excessive force while pulling the cable or when making the connections. Read all of the information in this manual before using this controller. All wiring must conform to local and national building and electrical codes and ordinances. This is a 5 VDC controller. Do not install on voltages higher than 5 VDC.

- This manual provides the installation instructions for this controller. Refer to the included wiring diagrams to connect the controller to the indoor unit.
- The controller uses low voltage. Keep a minimum distance of 12" (305 mm) between low voltage control wire

and high voltage power wires.

- Ground the shielded control wiring.
- Do not use a megger to test insulation.
- The controller cable length should not exceed 164 ft (50 m).

1. Use the wiring connections illustrations (Fig-ures 2 and 6) to connect the controller to the indoor unit. NOTE – Connection details for wall-mounted units differ from the other indoor unit types.
2. Select the cable exit route from the back of the controller.
3. Include a drip loop in the cable.



**Figure 2. Wiring Connections MMDA/B, MCFA/B, M22A and M33A/B/C**

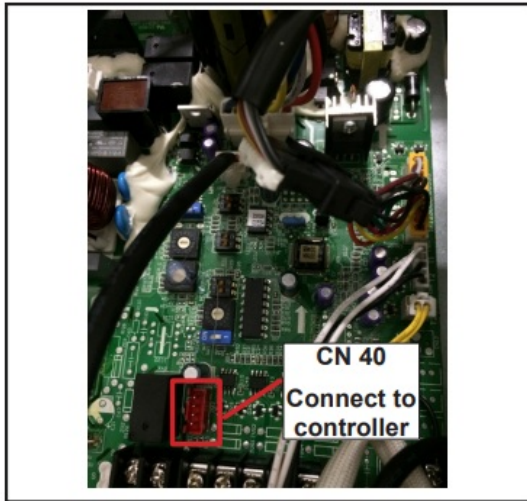


Figure 3. MMDA/B Main Board



Figure 5. MCFA/B Main Board

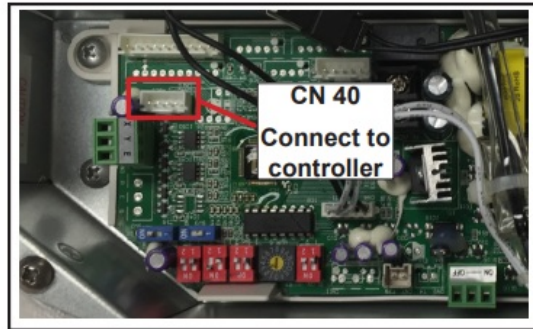


Figure 4. M22A and M33A/B/C Main Board

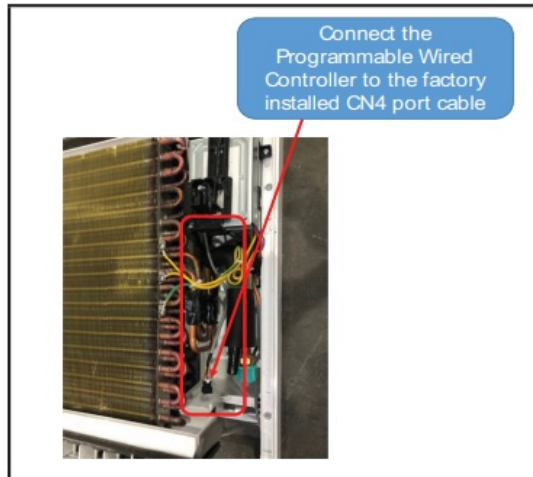
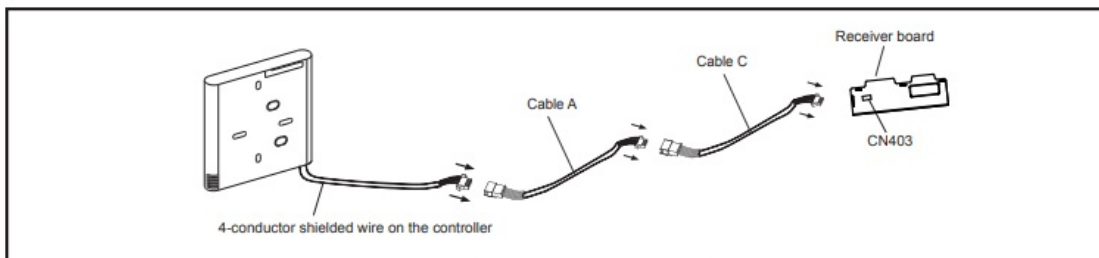
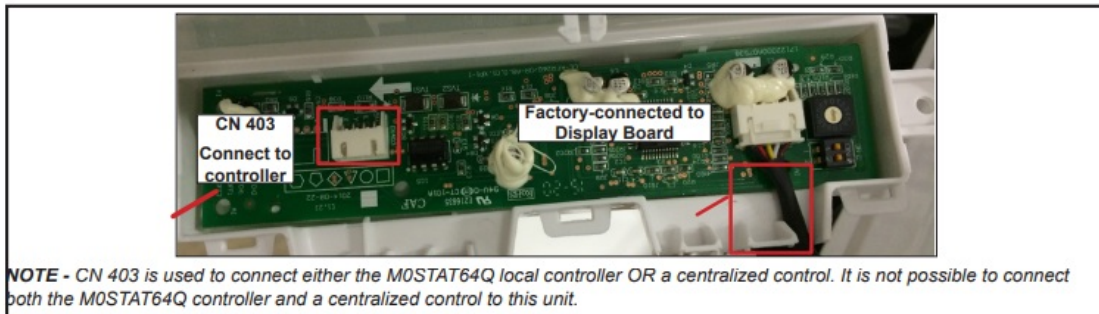


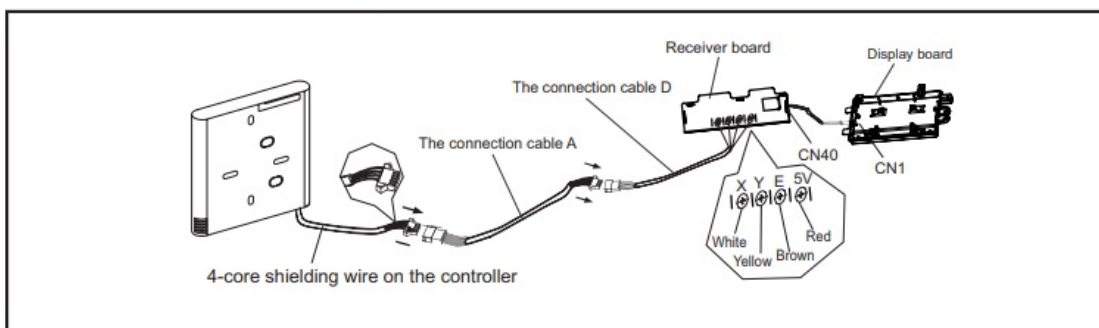
Figure 6. MFMA Main Board



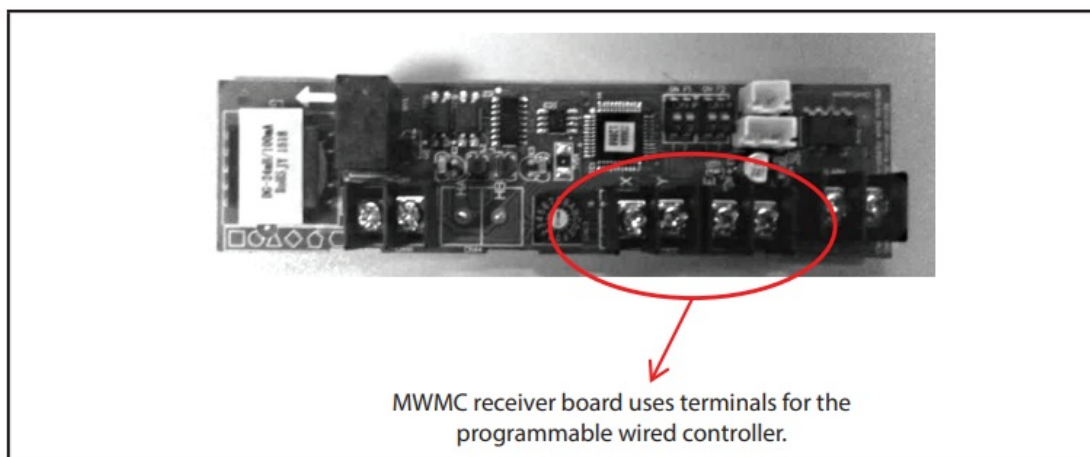
**Figure 7. Wiring Connections MWMA/B**



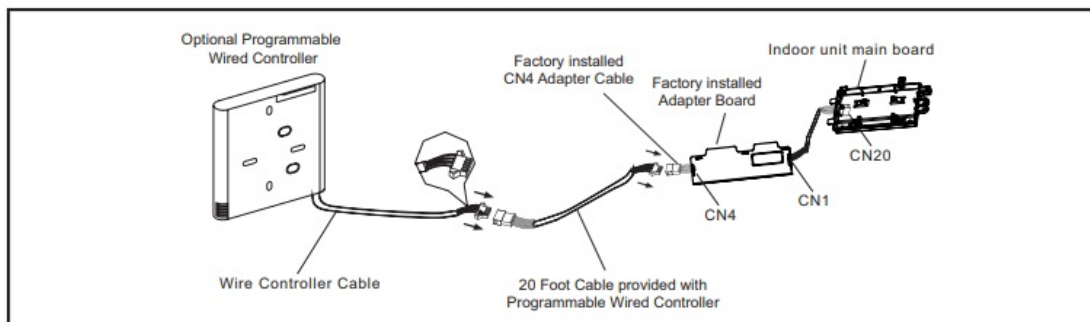
**Figure 8. MWMA/B Receiver Board**



**Figure 9. Wiring Connections MWMC**



**Figure 10. MWMC Receiver board**

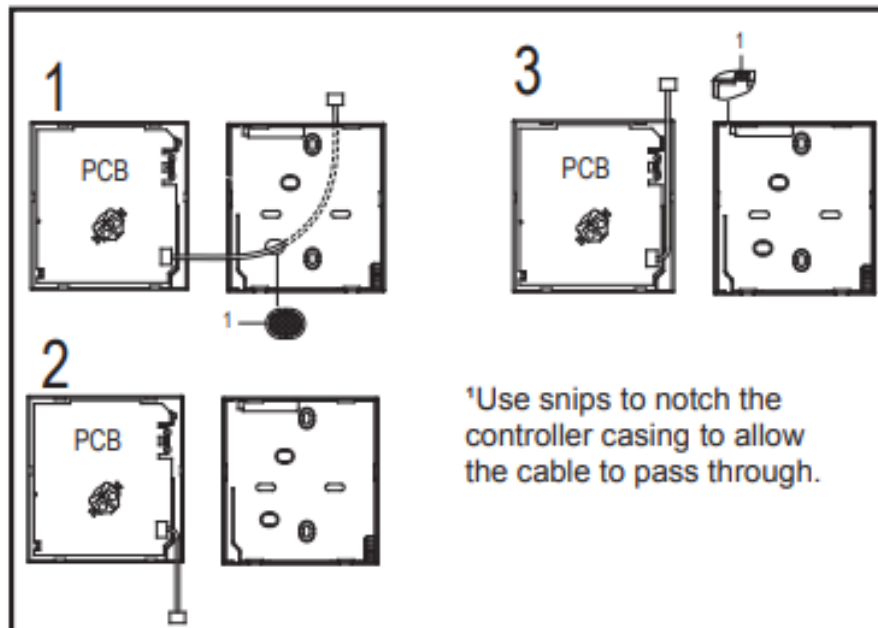


**Figure 11. Wiring Connections to MFMA**

4. Seal the cable entrance to the controller casing and any wall penetrations to prevent water from entering the

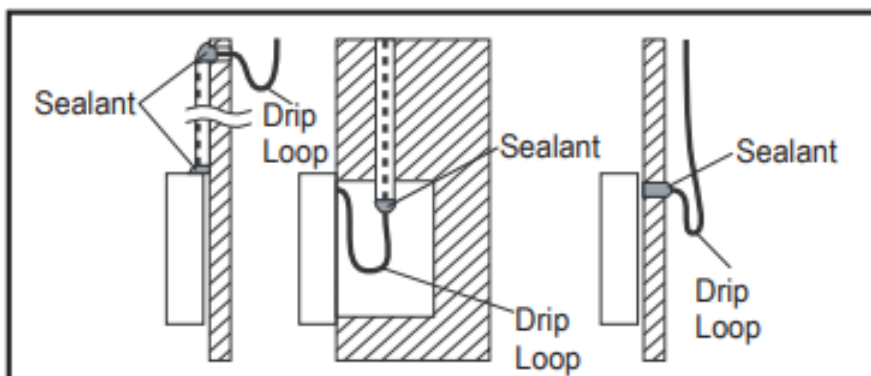


controller.

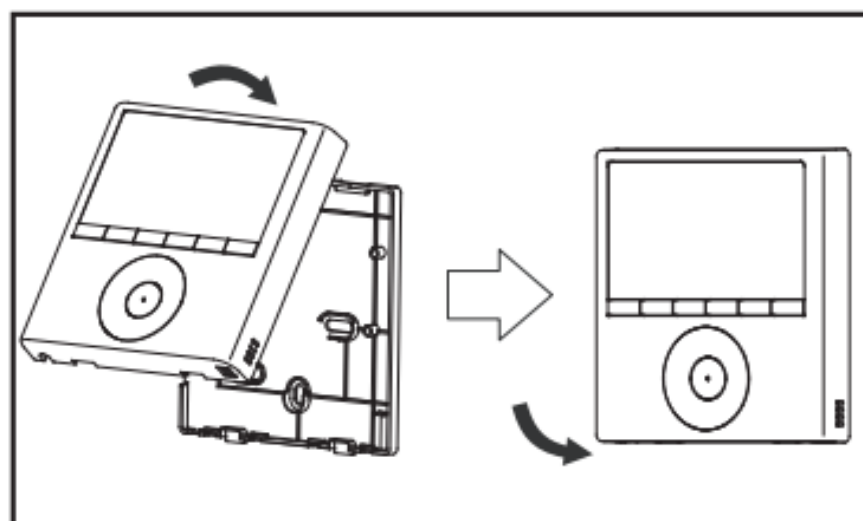


**Figure 12. Select Cable Route**

5. Reattach the controller to the back plate. Be careful not to pinch or bind the wires.

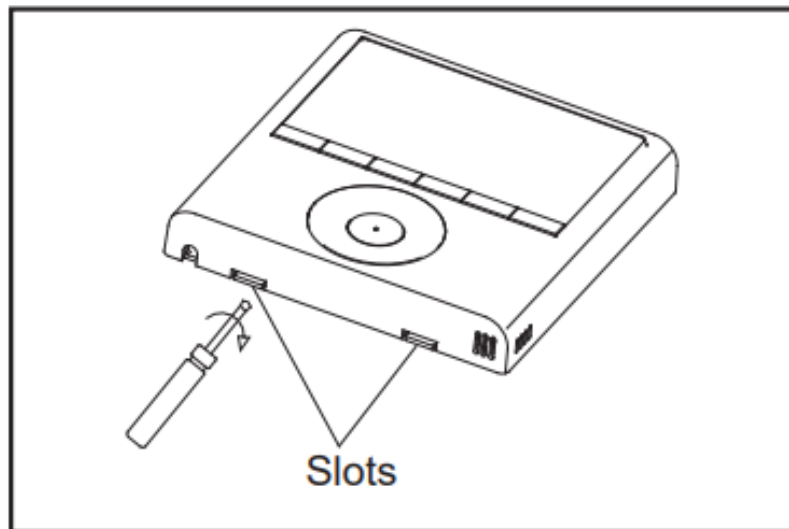


**Figure 13. Prevent Water from Entering Controller Casing**



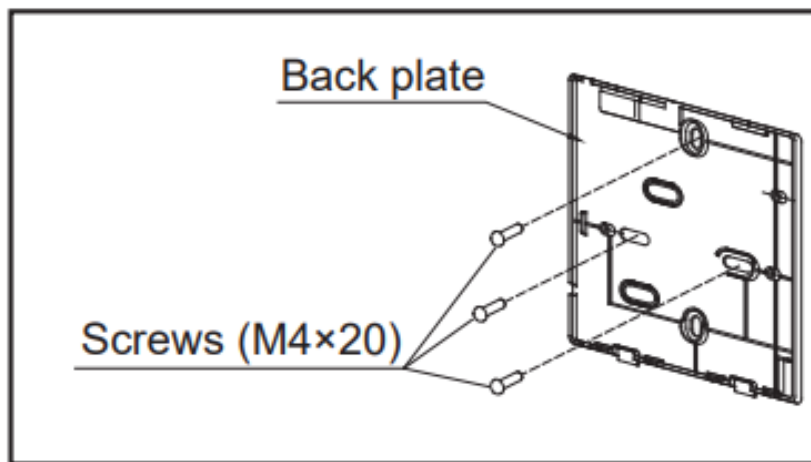
**Figure 14. Reattach Controller to Back Plate**

1. Remove the controller from the back plate using a flat-head screwdriver.



**Figure 15. Remove Back Plate**

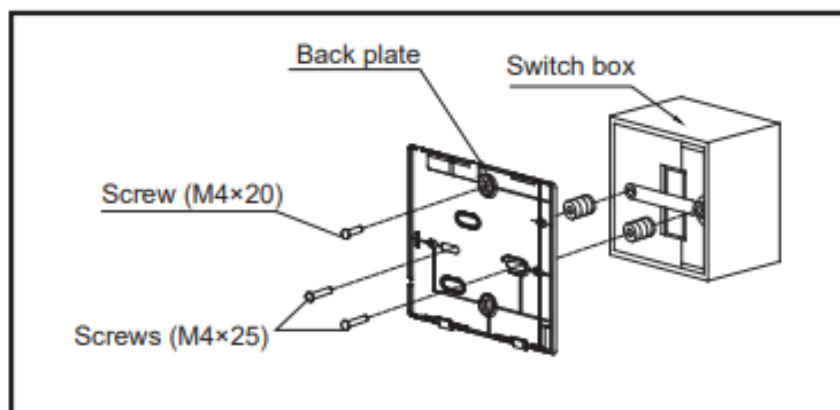
2. Mount the back plate as appropriate for your application



**Figure 16. Attach Back Plate to Wall**

3. J-box installation – Adjust the length of the two plastic spacers as needed to allow the controller to be mounted flush with the wall.

**NOTE** – Be sure to provide for future maintenance by allowing enough slack in the wiring to allow the controller to be removed from the wall if needed.



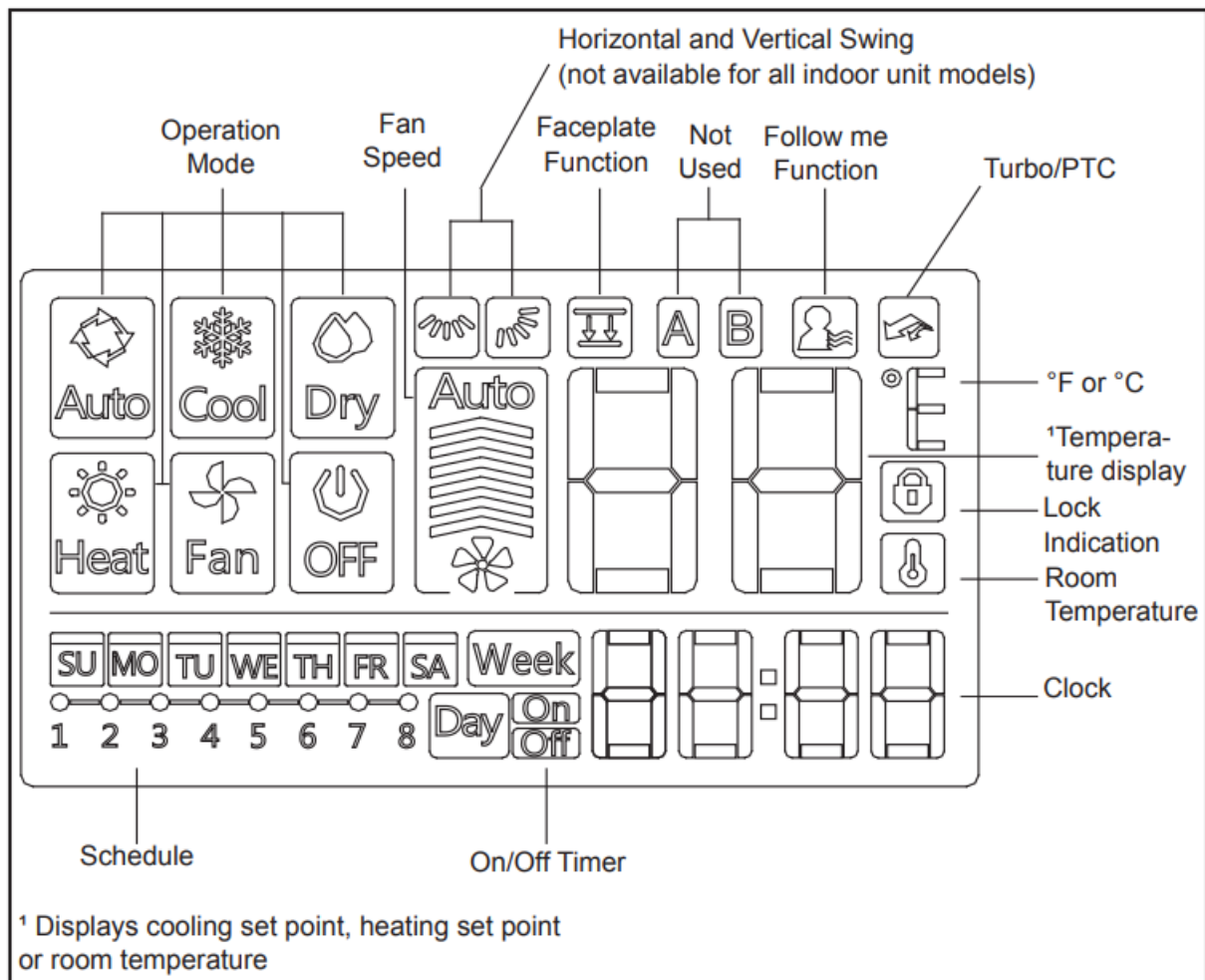
**Figure 17. Attach Back Plate to J-box**

4. Insert the provided battery into controller, positive side out. The battery stores the day and time in case of power outage. Replace the battery when its charge is depleted.

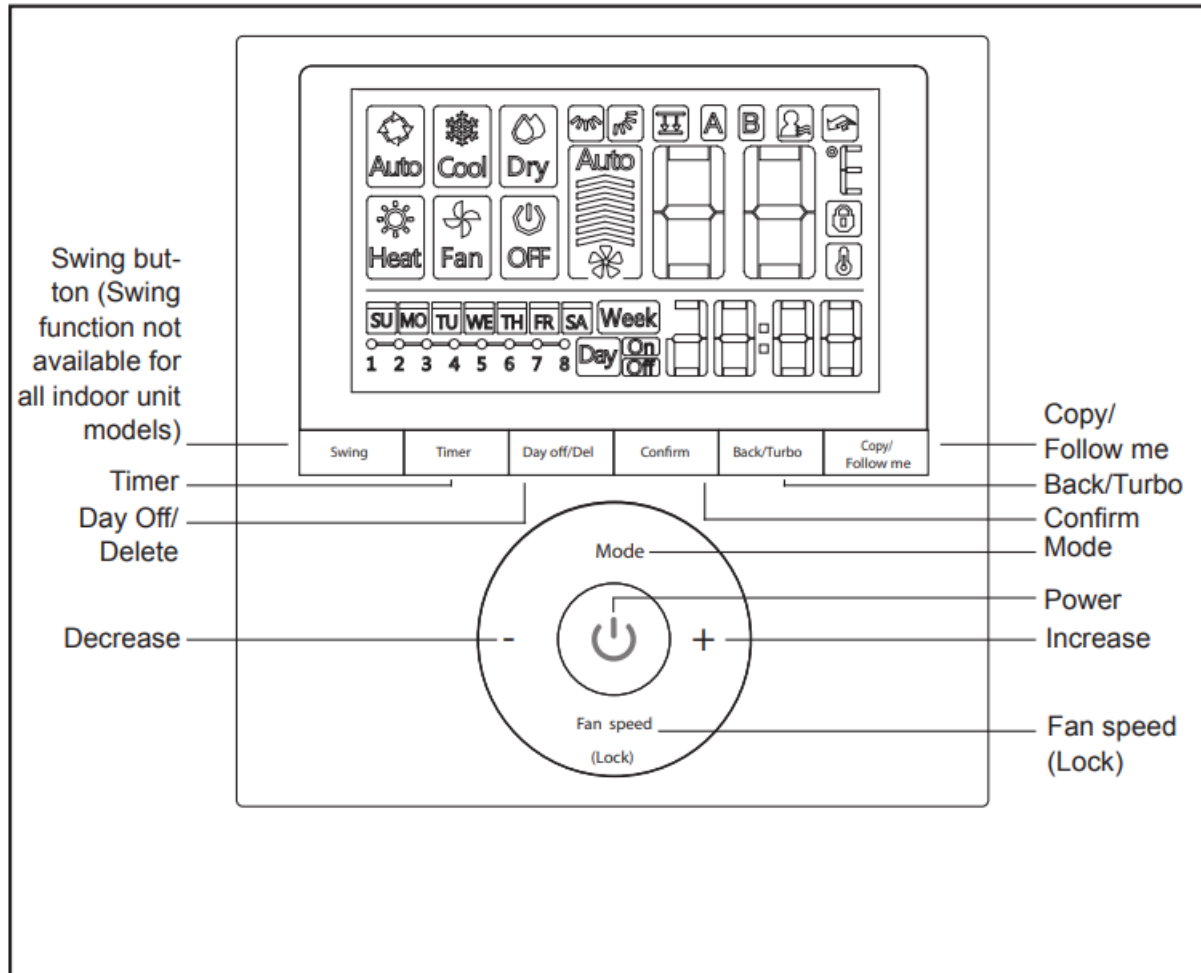


5. Reattach the controller to the back plate. Be careful not to pinch or bind the wires.

## Display



## Description of Butt



## Setup

### Set the Current Day and Time

1. Press and hold the Timer button for 3 sec-onds.
2. Use the + and – buttons to select the day. The selected day will flash.
3. Press the Timer button to complete the date setting.
4. Use the + and – buttons to set the current time. NOTE – the controller uses a 24-hour clock.
5. Press the Timer button to complete the time setting.

### Select Fahrenheit or Celsius for display

Press and hold the Back/Turbo button and the Copy/Follow me button simultaneously for 3 sec-onds to toggle between displaying degrees Fahr-enheit or degrees Celsius.

### To Set Room Temperature Sensor Location

Press the Copy/Follow me button to toggle be-tween having the room temperature sensed by the indoor unit or by the controller. NOTE – The Follow me indicator will display on the screen when the room temp is being sensed by the con-troller.

### Key Pad Tone (beep)

1. Press and hold the Swing button and the Tim-er button simultaneously for 3 seconds to turn off the key pad tone.

2. Press and hold the Swing button and the Tim-er button simultaneously for 3 seconds again to turn on the key pad tone.

## **Operation**

### **To Start/Stop Operation**

Press the Power button.

### **To set the operation mode**

1. Press the Mode button to set the operation mode.
2. Use the + and – buttons to scroll through the mode selections.
  - Auto – System will automatically switch be-tween heating and cooling depending on the temperature sensed.
  - Cool – System operates in cooling mode.
  - Dry – System removes humidity according to preset conditions (fan speed and set point temperature, not a humidistat sensor). Can-not adjust fan speed.
  - Heat – System operates in heating mode.
  - Fan – Fan only, no heating or cooling.

### **To Set (or change) the Set point**

Press the + and – buttons to set the setpoint. NOTE – the set point range is 62-86°F (17-30°C).

### **To Set the Fan Speed**

Press the Fan speed (Lock) button to scroll through the fan speeds. Auto → Low → Med → High

### **To Set Child Lock Function**

1. Press and hold the Fan speed (Lock) button for 3 seconds to lock all of the controller but-tons.
2. Press and hold the Fan speed (Lock) button again for 3 seconds to unlock all of the buttons.

### **Turn ON/OFF Turbo Function**

Press the Back/Turbo button to activate and de-activate the turbo functionality.

- **Cooling Mode** – Turbo sets the indoor unit fan speed to high for a factory-set period of time.
  - **Set Swing Function:** Press the Swing button to adjust louver direction and oscillation.
3. Press the Swing button to adjust the louver position. Each press moves the louvers 6°.
  4. Press and hold the Swing button for two sec-onds to begin continuous louver oscillation. The Swing icon displays on the screen. Swing functionality not available for all indoor unit types.
  5. For cassette units only, adjust each of the four louvers independently. Press and hold the Swing button for two seconds. The Swing icon will flash. Press the increase or decrease buttons to select the louver to adjust (the -0 setting makes all louvers move at the same time). After selecting the louver to adjust, press the Swing button to adjust the louver angle. Each press moves the louver 6°.

## **Timer and Schedules**

Use the Timer button to setup Weekly schedules or to setup timed operation for the indoor unit. Timers are used to schedule On/Off operation only. Schedules are used to change operational settings for defined periods of time

(events).

### **Setup Timed Operation Start Time**

1. Press the Timer button until Day On is high-lighted.
2. Press the Confirm button.
3. Use the + and – buttons to set the time to start operation.
4. Press the Confirm button.

### **Setup Timed Operation Stop Time**

1. Press the Timer button until Day Off is high-lighted.
2. Press the Confirm button.
3. Use the + and – buttons to set the time to stop operation.
4. Press the Confirm button.

### **Setup Timed Operation Start and Stop Time**

1. Press the Timer button until Day On/Off is highlighted.
2. Press the Confirm button.
3. Use the + and – buttons to set the time to start operation.
4. Press the Confirm button
5. Use the + and – buttons to set the time to stop operation.
6. Press the Confirm button.

### **Create Schedules (up to 8 events per day)**

1. Press the Timer button until Week is high-lighted.
2. Press the Confirm button.
3. Use the + and – buttons to select the day of the week to setup the scheduled events.
4. Press the Confirm button.
5. Setup the first event of the schedule.

### **Create and Setup Scheduled Events (up to 8 events per day)**

1. After selecting the scheduled day.
2. Use the + and – buttons to set the start time of the event. The display will show the event's start time, mode, set point and fan speed.
3. Press the Confirm button to confirm the start time and move to the operation mode selection.
4. Use the + and – buttons to select the operation mode for the event.
5. Press the Confirm button to confirm the operation mode and move to the set point selection.
6. Use the + and – buttons to set the set point for the event.
7. Press the Confirm button to confirm the set-point and move to the fan speed selection. Not available when operation mode is set to Fan or Off.

8. Use the + and – buttons to select the fan speed for the event.
  9. Press the Confirm button to confirm the fan speed and complete the settings for this event. Not available when operation mode is set to Auto, Dry or Off.
  10. Follow steps 2 through 9 to setup the next event. Each event ends at the start time of the next event.
- NOTE** – Use the Back/Turbo button to return to the previous step during event setup.

### **Activate and Deactivate Timed Operation**

1. Press the Timer button to activate timed operation.
2. Press the Power button to deactivate timed operation.

### **Setup Days Off**

Setup a day, or multiple days, within the scheduled week for which the indoor unit will not operate. When the day arrives, the unit will be powered off and will not operate until the next day's first event. Once the set day has passed, the Day Off setting is automatically removed.

1. Press the Timer button.
2. Press the Confirm button.
3. Use the + and – buttons to select the day of the week.
4. Press the Day off/Del button.
5. Press the Back/Turbo button.
6. Follow steps 3 and 4 for every day off required.

### **Copy a Schedule to a New Day**

All events for the scheduled day will be copied.

1. Press the Timer button until Week is high-lighted.
2. Press the Confirm button.
3. Use the + and – buttons to select the day to copy from.
4. Press the Copy/Follow Me button. The letters "CY" will be displayed on the screen.
5. Use the + and – buttons to select the day to copy to.
6. Press the Copy/Follow Me button to confirm.
7. Press the Back/Turbo button to return to the weekly timer.
8. Follow steps 3 through 7 to copy a schedule for additional days.

### **Edit a Scheduled Event**

1. Press the Timer button until Week is high-lighted.
2. Press the Confirm button.
3. Use the + and – buttons to select the day of the week.
4. Press the Confirm button.
5. Use the + and – buttons to select the event to edit. The display will show the event's start time, mode, set point and fan speed.
6. Use the + and – buttons to change the start time of the event.
7. Press the Confirm button to confirm the start time and move to the operation mode selection.

8. Use the + and – buttons to change the operation mode for the event.
9. Press the Confirm button to confirm the operation mode and move to the set point selection.
10. Use the + and – buttons to change the set point for the event.
11. Press the Confirm button to confirm the set-point and move to the fan speed selection. Not available when operation mode is set to Fan or Off.
12. Use the + and – buttons to change the fan speed for the event.
13. Press the Confirm button to confirm the fan speed and complete the changes for this event. Not available when operation mode is set to Auto, Dry or Off.

**NOTE** – Use the Back/Turbo button to return to the previous step.

### **Delete an Event from a Scheduled Day**

This action cannot be undone.

1. Press the Timer button until Week is high-lighted.
2. Press the Confirm button.
3. Use the + and – buttons to select the day of the week.
4. Press the Confirm button.
5. Use the + and – buttons to select the event to delete. The display will show the event's start time, mode, set point and fan speed.
6. Press the Day off/Del button.

### **Troubleshooting Fault Codes**



