



## **Easy Start Micro Air 368 Advanced Soft Starter**



# **LENNOX Easy Start Micro Air 368 Advanced Soft Starter Instructions**

[Home](#) » [Lennox](#) » LENNOX Easy Start Micro Air 368 Advanced Soft Starter Instructions 

### **Contents**

- [1 LENNOX Easy Start Micro Air 368 Advanced Soft Starter](#)
- [2 Product Information](#)
- [3 Product Usage Instructions](#)
- [4 DESCRIPTION](#)
- [5 INSTALLATION INSTRUCTION](#)
- [6 Documents / Resources](#)
  - [6.1 References](#)
- [7 Related Posts](#)



**LENNOX Easy Start Micro Air 368 Advanced Soft Starter**



## Product Information

- **Model:** Easy Start
- **Compatibility:** Lennox and similar units

## Specifications:

- All connectors used must be 600VAC rated

## Product Usage Instructions

### Before Installation

1. Ensure all connectors used are 600VAC rated
2. Remove all start component connections and wires from the system if present

### Steps

1. Attach Easy Start Black to compressor common (BLACK) on the contactor using a fork or ring terminal connector
2. Connect Easy Start Orange to the run-capacitor Herm (H) position
3. Remove compressor run (RED) from the contactor and splice to Easy Start Brown
4. Place Easy Start White on the contactor behind the screwhead using a fork or ring terminal connector

## FAQ

- **Q: Can I use Easy Start with units other than Lennox?**

A: Easy Start is recommended for Lennox and like units. Compatibility with other units may vary.

• **Q: Are there any safety precautions to consider during installation?**

A: Ensure all connections are made following the provided instructions and that the unit is disconnected from power before installation.

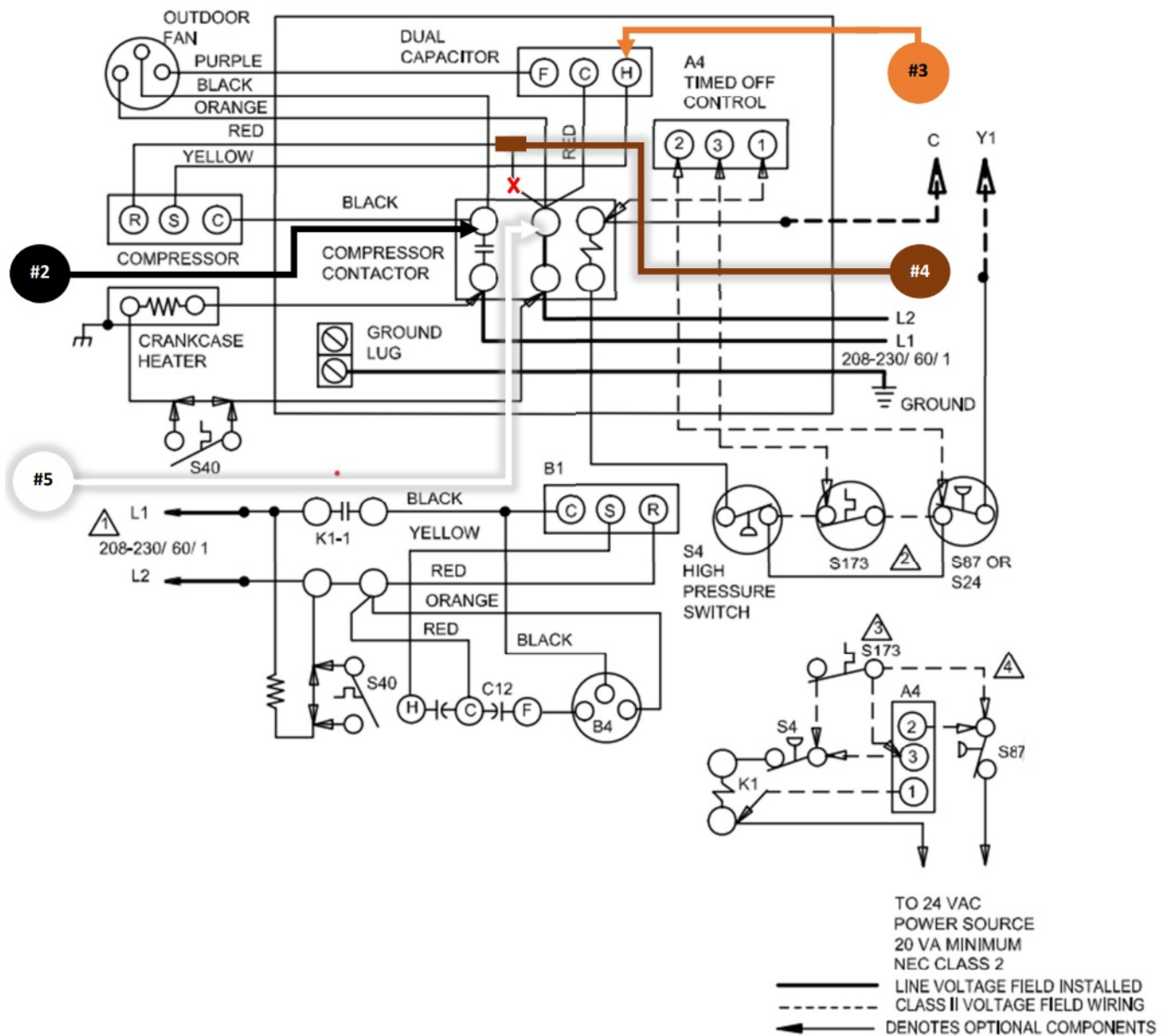
## DESCRIPTION

DESCRIPTION	
KEY	COMPONENT
A4	CONTROL-TIMED OFF
B1	COMPRESSOR
B4	MOTOR-OUTDOOR FAN
C12	CAPACITOR-DUAL
HR1	HEATER-COMPRESSOR
K1,-1	CONTACTOR-COMPRESSOR
S4	SWITCH-HIGH PRESSURE
S24	SWITCH-LOSS OF CHARGE
S40	TERMOSTAT-CRANKCASE
S87	SWITCH-LOW PRESS, COMP 1
S173	SWITCH-THERMAL PROTECTION

## NOTE

IF ANY WIRE IN THIS APPLIANCE IS REPLACED,IT MUST BE REPLACED WITH WIRE OF LIKE SIZE, RATING, INSULATION THICKNESS, AND TERMINATION.

## INSTALLATION INSTRUCTION



# 1. Before Easy Start Installation!

All connectors used must be 600VAC rated!

If present in your system all start component connections and wires need to be removed.

- Put Easy Start Black with compressor common (BLACK) on the contactor behind the screwhead using a fork or ring terminal connector.

- Put Easy Start Orange on the run-capacitor Herm (H) position.

- Remove compressor run (RED) from the contactor [see red X] and Splice to Easy Start Brown.

**NOTE:** The wire between the contactor and the run-capacitor common remains untouched and unused, and nothing is connected at either end!

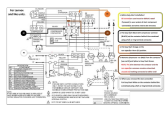
- Where you removed the last connection Put Easy Start White on the contactor behind the screwhead using a fork or ring terminal connector.

## NOTE

- FOR USE WITH COPPER CONDUCTORS ONLY. REFER TO THE UNIT RATING PLATE FOR MINIMUM CIRCUIT AMPACITY AND MAXIMUM OVERCURRENT PROTECTION SIZE.
- JUMPER IS USED WHEN TOC IS NOT USED.

- S173 SWITCH USED ONLY IN UNITS EQUIPPED WITH COMPRESSORS THAT DO NOT INCLUDE INTERNAL SWITCH.
- S173 TO \$87 WHEN A4 IS NOT USED.

## Documents / Resources

	<a href="#">LENNOX Easy Start Micro Air 368 Advanced Soft Starter</a> [pdf] Instructions Easy Start Micro Air 368 Advanced Soft Starter, Micro Air 368 Advanced Soft Starter, Advanced Soft Starter, Soft Starter, Starter
---	---

## References

- [User Manual](#)

[Manuals+](#), [Privacy Policy](#)

This website is an independent publication and is neither affiliated with nor endorsed by any of the trademark owners. The "Bluetooth®" word mark and logos are registered trademarks owned by Bluetooth SIG, Inc. The "Wi-Fi®" word mark and logos are registered trademarks owned by the Wi-Fi Alliance. Any use of these marks on this website does not imply any affiliation with or endorsement.