



LENNOX CORE Service App Wired Thermostat Mode Instructions

[Home](#) » [Lennox](#) » LENNOX CORE Service App Wired Thermostat Mode Instructions 

LENNOX CORE Service App Wired Thermostat Mode Instructions



Applies to Lennox Model L and Enlight Rooftop Units 3-25 tons
Helpful Resources

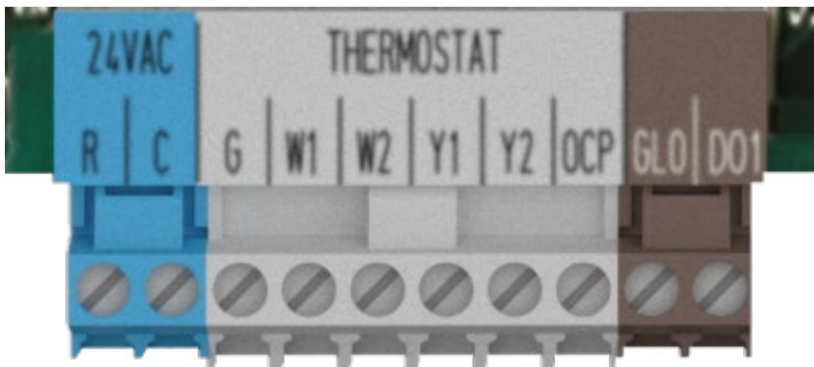
1. Installation and service literature on LennoxCommercial.com or LennoxPros.com.
2. CORE Service App Reference Guide.
3. CORE Service Curriculum on LennoxPros.com.
4. Lennox Model L and CORE Control System videos

Requirements

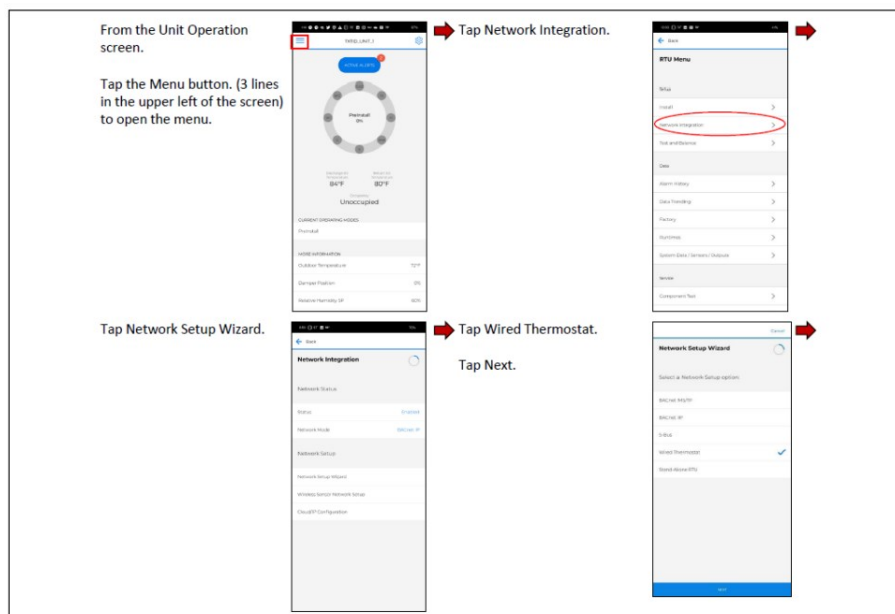
1. iOS or Android device – phone or tablet with Android 6.0 (Marshmallow) or iOS version 11 minimum. Android hardware requires 2GB RAM and a 2GHz Core processor.
2. CORE Service App found at the appropriate App Store or at the following QRs:



Wired Thermostat mode is used when 24vac is applied to the thermostat inputs for control. 24vac will originate from the 'R' terminal within the SmartWire connection array and will be switched by either a conventional thermostat or building automation system for control – applying 24vac to the G, W1, W2, Y1, Y2, OCP, DI-4 inputs.



The technician will use the Network Integration wizard to set up the controller for wired thermostat mode. Excerpt below from CORE Service App Reference Guide . Further instructions are included in the guide.



Self-Service Technical Support with No Wait Times

Click on the black logos below to download these apps





Download all Training Toolbox Tips
Register for Technical Training Webinars


Contents

[1 Documents / Resources](#)








[1.1 References](#)

[2 Related Posts](#)

Documents / Resources

	<p>LENNOX CORE Service App Wired Thermostat Mode [pdf] Instructions Model L, Enlight Rooftop Units 3-25 tons, CORE Service App Wired Thermostat Mode, CORE Service App, Wired Thermostat Mode, Service App, Thermostat Mode, Thermostat Mode Service App</p>
------------------------------------------------------------------------------------	----------------------------------------------------------------------------------------------------------------------------------------------------------------------------------------------------------------------------------------------------------------------------------

References

-  [Commercial Air Conditioning & Heating Units | Lennox Commercial](#)
-  [LennoxPros - HVAC Lennox Catalog, Tools and Resources | LennoxPROs.com](#)
-  [Commercial Air Conditioning & Heating Units | Lennox Commercial](#)
-  bit.ly/3Gy5uKH
-  [Lennox Commercial Technical Training](#)
-  [Commercial Training Toolbox Tips](#)
-  [Error during processing.](#)

[Manuals+](#).