



LENNOX CORE Service App Pre Install Setup Instructions

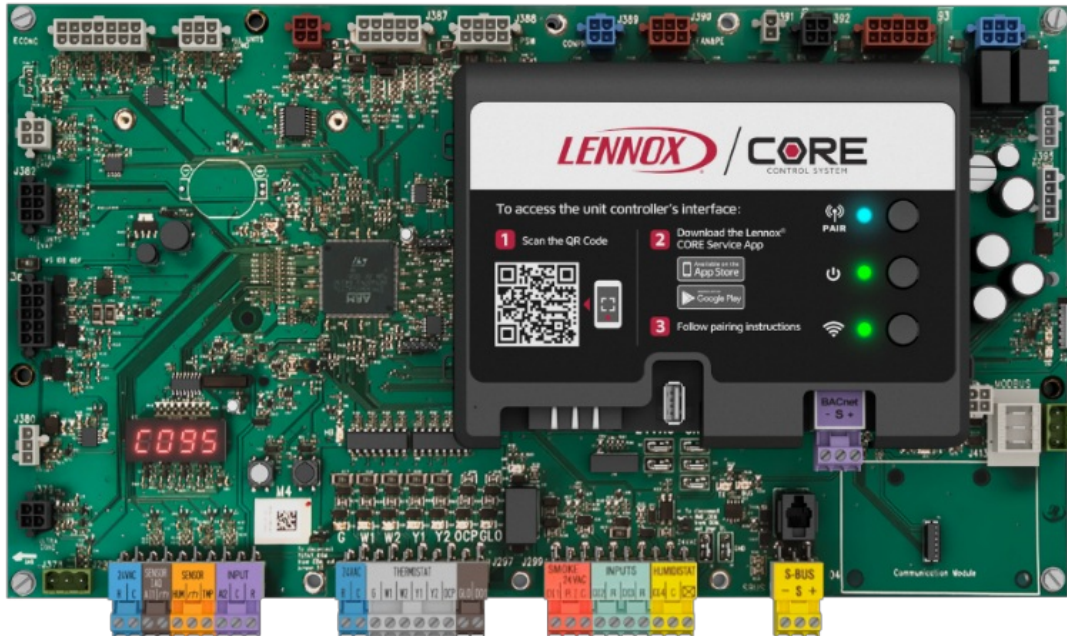
[Home](#) » [Lennox](#) » LENNOX CORE Service App Pre Install Setup Instructions 

Contents

- [1 LENNOX CORE Service App Pre Install Setup](#)
- [2 Product Information Lennox CORE Service App](#)
- [3 Helpful Resources](#)
- [4 Required Tools](#)
- [5 Product Usage Instructions](#)
- [6 INSTALLATION INSTRUCTIONS](#)
- [7 Documents / Resources](#)
 - [7.1 References](#)
- [8 Related Posts](#)



LENNOX CORE Service App Pre Install Setup



Product Information Lennox CORE Service App

The Lennox CORE Service App is a mobile application designed for the pre-install setup and operation of Lennox Model L and Enlight Rooftop Units 3-25 tons. It is a commercial training toolbox that provides helpful resources, reference guides, and online curriculum for the startup technician to perform the setup steps. The app requires pairing with the Lennox CORE Control System to complete the setup process.

Helpful Resources

Applies to Lennox Model L and Enlight Rooftop Units 3-25 tons

1. Download installation and service literature from LennoxCommercial.com or LennoxPros.com.
2. [CORE Service App Reference Guide](#) takes you step-by-step through the startup and commissioning procedures.
3. Log in to LennoxPros.com to start the online CORE Service Curriculum.
4. View Lennox Model L and CORE Control System videos on YouTube.

Required Tools



1. Mobile device for downloading the CORE Service App.
2. QR codes for scanning to download the app.

Product Usage Instructions

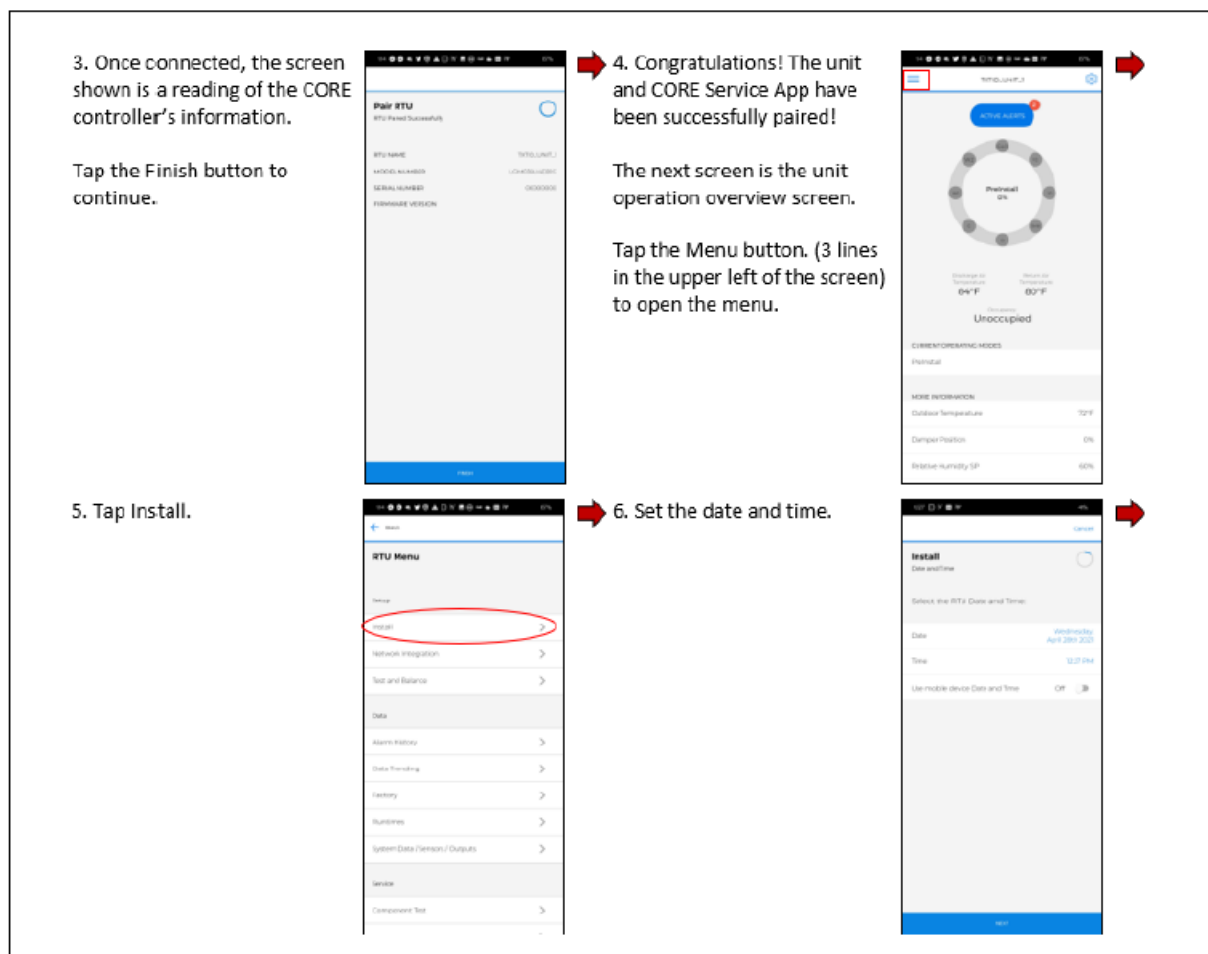
If you have a new or replacement CORE controller, it will come shipped in a pre-install state. To set up the unit for operation, follow these steps:

1. Download the CORE Service App to your mobile device by scanning the provided QR codes.
2. Pair your device with the Lennox CORE Control System.
3. Follow the setup steps provided in the CORE Service App Reference Guide.

For additional technical support, you can click on the black logos provided in the app to download other helpful apps or register for technical training webinars. No wait times are required for self-service technical support.

INSTALLATION INSTRUCTIONS


A new or replacement CORE controller will come shipped in a Pre-Install state. The startup technician will use the CORE Service App to set up the unit for operation. Pair your device to the Lennox CORE Control System to perform the setup steps. See the excerpt from the CORE Service App Reference Guide below. Complete instructions are included in the guide.





Self-Service Technical Support with No Wait Times Click on the black logos below to download these apps

- Download all Training Toolbox Tips
- Register for Technical Training Webinars

Documents / Resources

	<p>LENNOX CORE Service App Pre Install Setup [pdf] Instructions CORE Service App Pre Install Setup, CORE Service App, Service App, Service, App, Pre Instal I Setup</p>
---	---

References

-  [Commercial Air Conditioning & Heating Units | Lennox Commercial](#)
-  [LennoxPros - HVAC Lennox Catalog, Tools and Resources | LennoxPROs.com](#)

Manuals+.