



Lenco CR-620 DAB+-FM Clock Radio with Color Display User Manual

[Home](#) » [Lenco](#) » Lenco CR-620 DAB+-FM Clock Radio with Color Display User Manual 

Lenco

CR-620 DAB+-FM Clock Radio with Color Display
User Manual



CAUTION:

Usage of controls or adjustments or performance of procedures other than those specified herein may result in hazardous radiation exposure.

Contents

[1 PRECAUTIONS BEFORE USE](#)

[2 INSTALLATION](#)

[3 Trouble Shooting](#)

[4 Error messages](#)

[5 Specifications](#)

[6 Documents / Resources](#)

[6.1 References](#)

[7 Related Posts](#)

PRECAUTIONS BEFORE USE

KEEP THESE INSTRUCTIONS IN MIND:

1. Do not cover or block any ventilation openings. When placing the device on a shelf, leave 5 cm (2") free space around the whole device.
2. Install in accordance with the supplied user manual.
3. Keep the device away from heat sources such as radiators, heaters, stoves, candles, and other heat-generating products or naked flame. The device can only be used in moderate climates. Extremely cold or warm environments should be avoided. Working temperature between 0° and 35°C.
4. Avoid using the device near strong magnetic fields.
5. Electrostatic discharge can disturb normal usage of this device. If so, simply reset and restart the device following the instruction manual. During file transmission, please handle with care and operate in a static-free environment.
6. Warning! Never insert an object into the product through the vents or openings. High voltage flows through the product and inserting an object can cause electric shock and/or short circuit internal parts. For the same reason, do not spill water or liquid on the product.
7. Do not use in wet or moist areas such as bathrooms, steamy kitchens or near swimming pools.
8. The device shall not be exposed to dripping or splashing and make sure that no objects filled with liquids, such as vases, are placed on or near the apparatus.
9. Do not use this device when condensation may occur. When the unit is used in a warm wet room with damp, water droplets or condensation may occur inside the unit and the unit may not function properly; let the unit stand in power OFF for 1 or 2 hours before turning on the power: the unit should be dry before getting any power.
10. Although this device is manufactured with the utmost care and checked several times before leaving the factory, it is still possible that problems may occur, as with all electrical appliances. If you notice smoke, an excessive build-up of heat or any other unexpected phenomena, you should disconnect the plug from the main power socket immediately.
11. This device must operate on a power source as specified on the specification label. If you are not sure of the type of power supply used in your home, consult your dealer or local power company.
12. Keep away from animals. Some animals enjoy biting on power cords.
13. To clean the device, use a soft dry cloth. Do not use solvents or petrol-based fluids. To remove severe stains, you may use a damp cloth with dilute detergent.
14. The supplier is not responsible for damage or lost data caused by malfunction, misuse, modification of the

device, or battery replacement.

15. Do not interrupt the connection when the device is formatting or transferring files. Otherwise, data may be corrupted or lost.
16. If the unit has a USB playback function, the USB memory stick should be plugged into the unit directly. Don't use a USB extension cable because it can cause interference resulting in the failure of data.
17. The rating label has been marked on the bottom or back panel of the device.
18. This device is not intended for use by people (including children) with physical, sensory, or mental disabilities, or a lack of experience and knowledge unless they're under supervision or have received instructions about the correct use of the device by the person who is responsible for their safety.
19. This product is intended for nonprofessional use only and not for commercial or industrial use.
20. Make sure the unit is adjusted to a stable position. Damage caused by using this product in an unstable position vibrations or shocks or by failure to follow any other warning or precaution contained within this user manual will not be covered by warranty.
21. Never remove the casing of this device.
22. Never place this device on other electrical equipment.
23. Do not allow children access to plastic bags.
24. Only use attachments/accessories specified by the manufacturer.
25. Refer all servicing to qualified service personnel. Servicing is required when the device has been damaged in any way, such as the power supply cord or the plug, when the liquid has been spilled or objects have fallen into the device, when the device has been exposed to rain or moisture, does not operate normally, or has been dropped.
26. Long exposure to loud sounds from personal music players may lead to temporary or permanent hearing loss.
27. If the product is delivered with a power cable or AC power adaptor:
 - If any trouble occurs, disconnect the AC power cord and refer servicing to qualified personnel.
 - Don't step on or pinch the power adaptor. Be very careful, particularly near the plugs and the cable's exit point. Do not place heavy items on the power adaptor, which may damage it. Keep the entire device out of children's reach! When playing with the power cable, they can seriously injure themselves.
 - Unplug this device during lightning storms or when unused for a long period.
 - The socket outlet must be installed near the equipment and must be easily accessible.
 - Do not overload ac outlets or extension cords. Overloading can cause fire or electric shock.
 - Devices with class 1 construction should be connected to a main socket outlet with a protective earthed connection.
 - Devices with class 2 construction do not require an earthed connection.
 - Always hold the plug when pulling it out of the main supply socket. Do not pull the power cord. This can cause a short circuit.
 - Do not use a damaged power cord or plug or a loose outlet. Doing so may result in fire or electric shock.
28. If the product contains or is delivered with a remote control containing coin/cell batteries:

Warning:

- "Do not ingest battery, Chemical Burn Hazard" or equivalent working.
- [The remote control supplied with] This product contains a coin/button cell battery. If the battery is swallowed, it can cause severe internal burns in just 2 hours and can lead to death.
- Keep new and used batteries away from children.
- If the battery compartment does not close securely, stop using the product and keep it away from children.
- If you think batteries might have been swallowed or placed inside any part of the body, seek immediate

medical attention.

29. Caution about the use of Batteries:

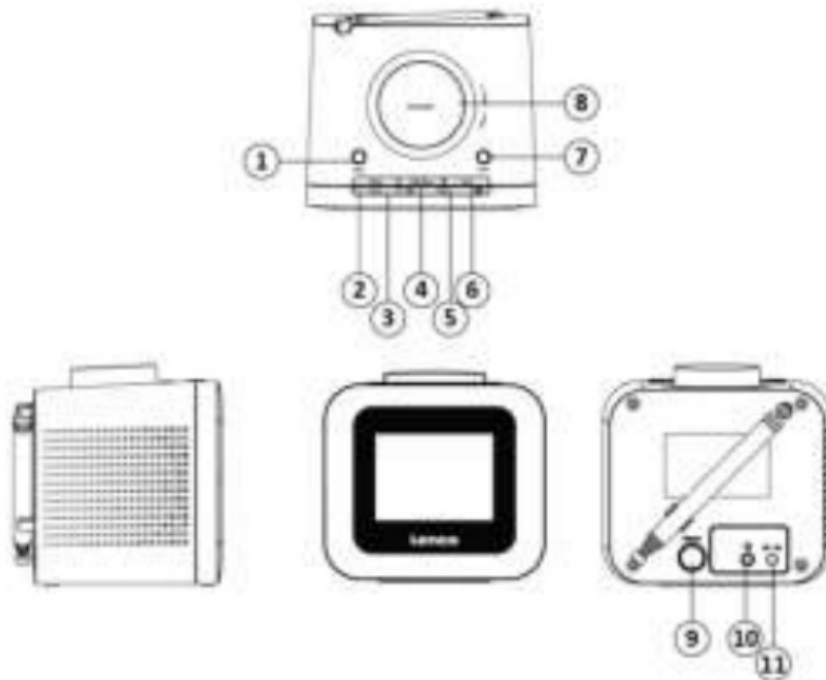
- Danger of explosion if the battery is incorrectly replaced. Replace only with the same or equivalent type.
- Battery cannot be subjected to high or low extreme temperatures, or low air pressure at high altitudes during use, storage, or transportation.
- Replacement of a battery with an incorrect type that can result in an explosion or the leakage of flammable liquid or gas.
- Disposal of a battery into a fire or a hot oven, or mechanically crushing or cutting of a battery, that can result in an explosion.
- Leaving a battery in an extremely high temperature surrounding environment can result in an explosion or that leakage of flammable liquid or gas.
- A battery subjected to extremely low air pressure that may result in an explosion or the leakage of flammable liquid or gas.
- Attention should be drawn to the environmental aspects of battery disposal.

INSTALLATION

- Unpack all parts and remove protective material.
- Do not connect the unit to the mains before checking the mains voltage and before all other connections have been made.



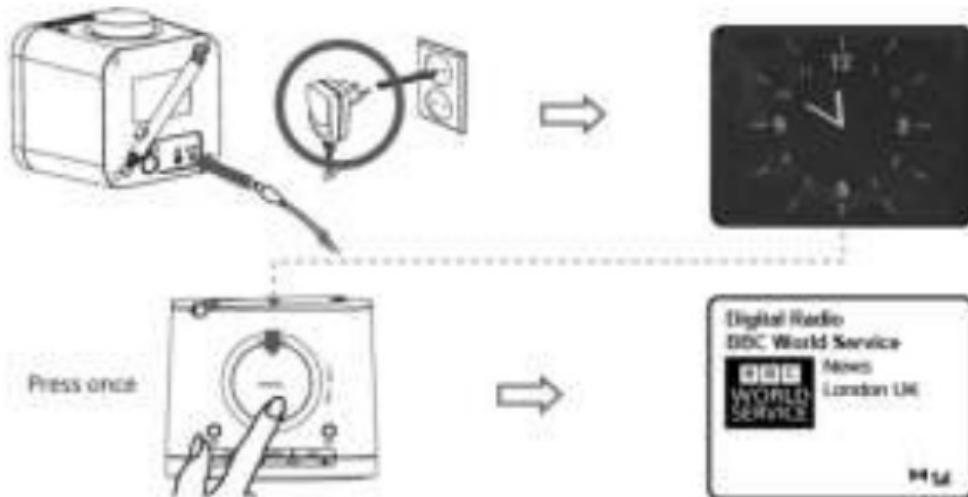
* These instructions are related only to products using power cables or AC power adaptors.



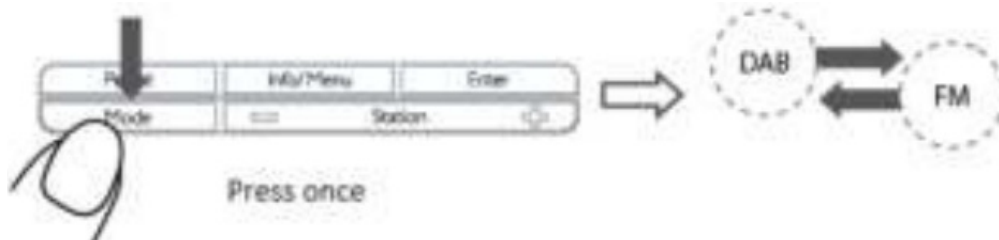
1. Sleep button
2. Preset button
3. Mode button
4. Info/Menu button
5. Station button
6. Enter the button

7. Alarm button
8. Power/+ Volume
-/Snooze button
9. Dimmer button
10. Earphone jack
11. DC in Socket

1. Switch on by Radio



2. Mode Change



3. Volume Control



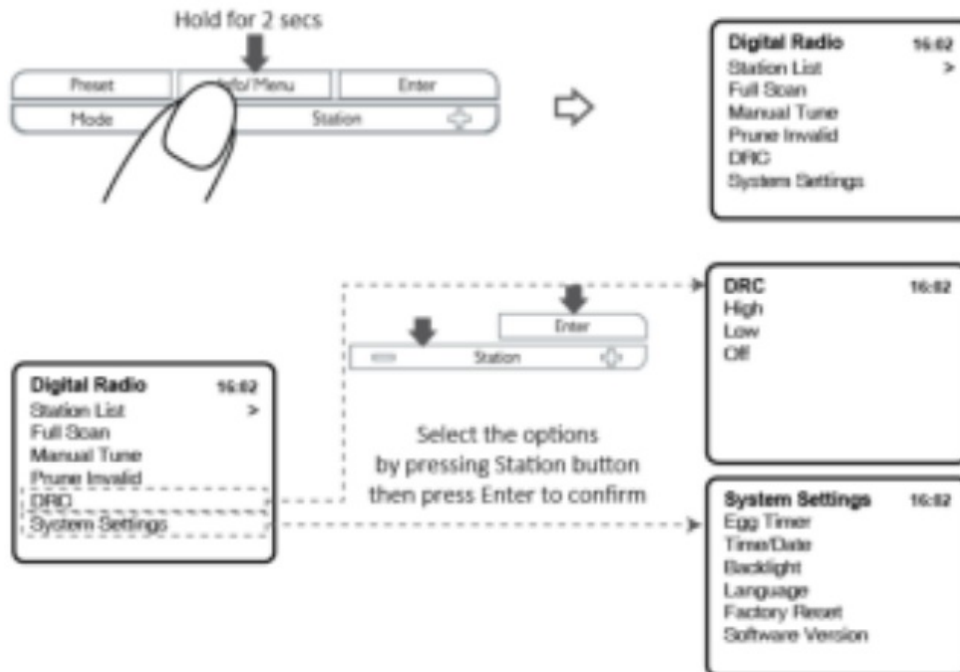
4. Change Station (DAB+)



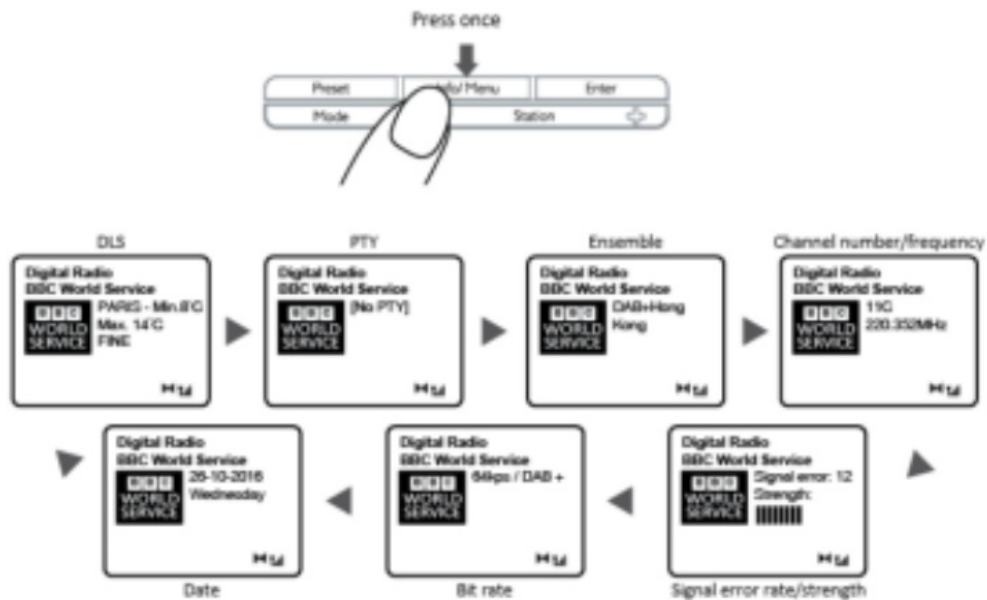
5. Change Station (FM)



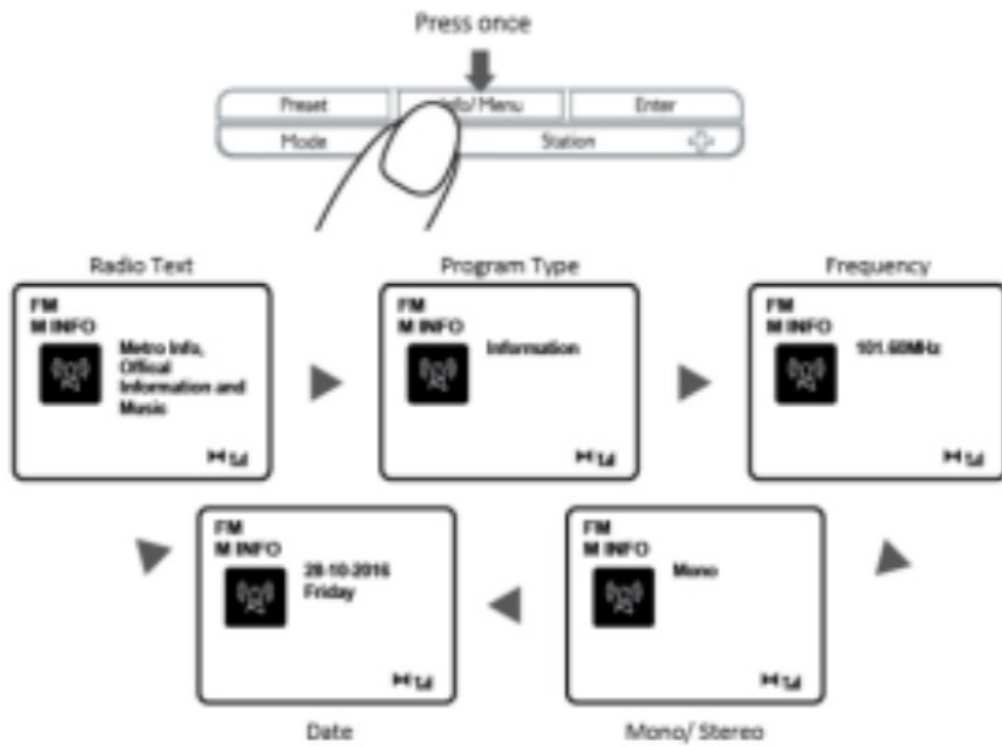
6. Menu



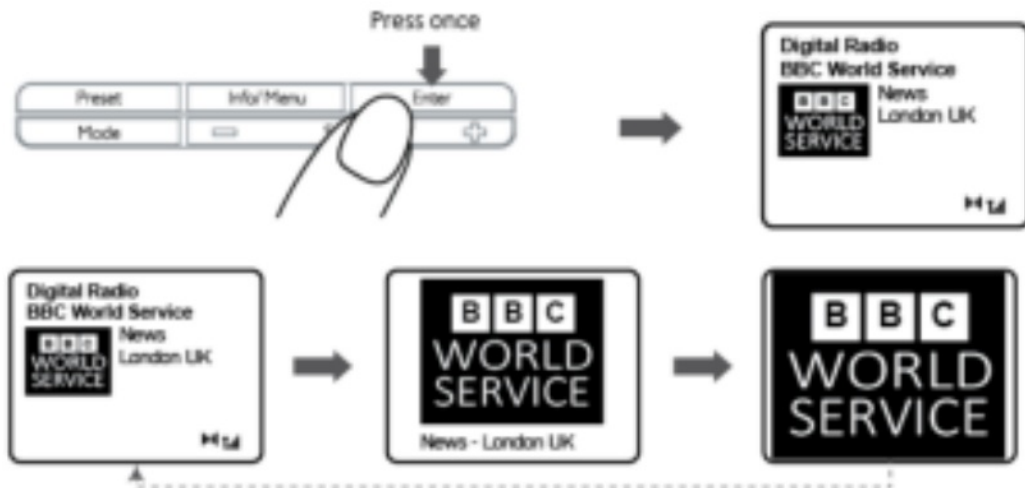
7. Info (DAB+)



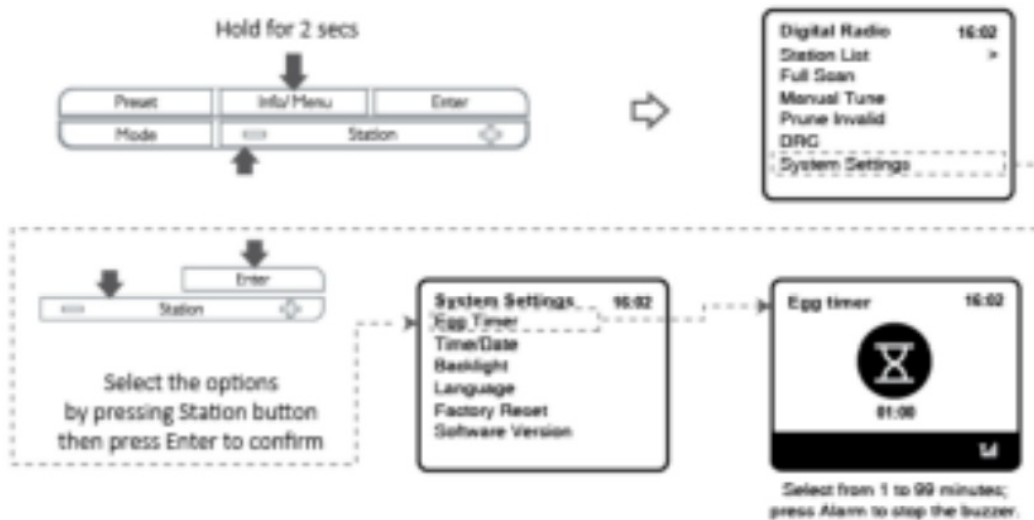
8. Info (FM)



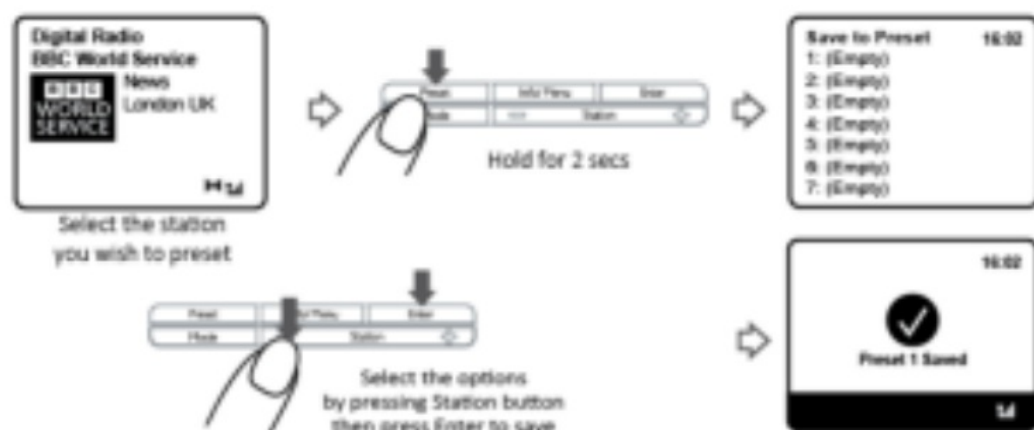
9. Slide Show



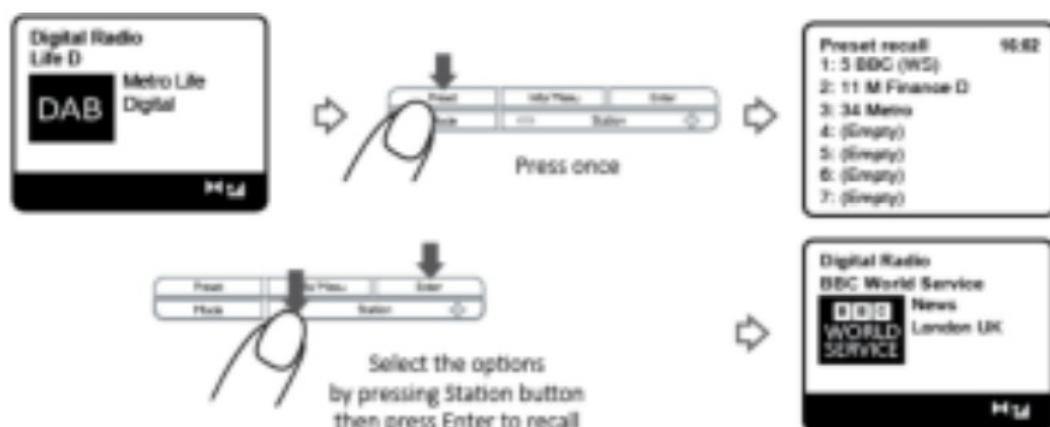
10. Egg/Time



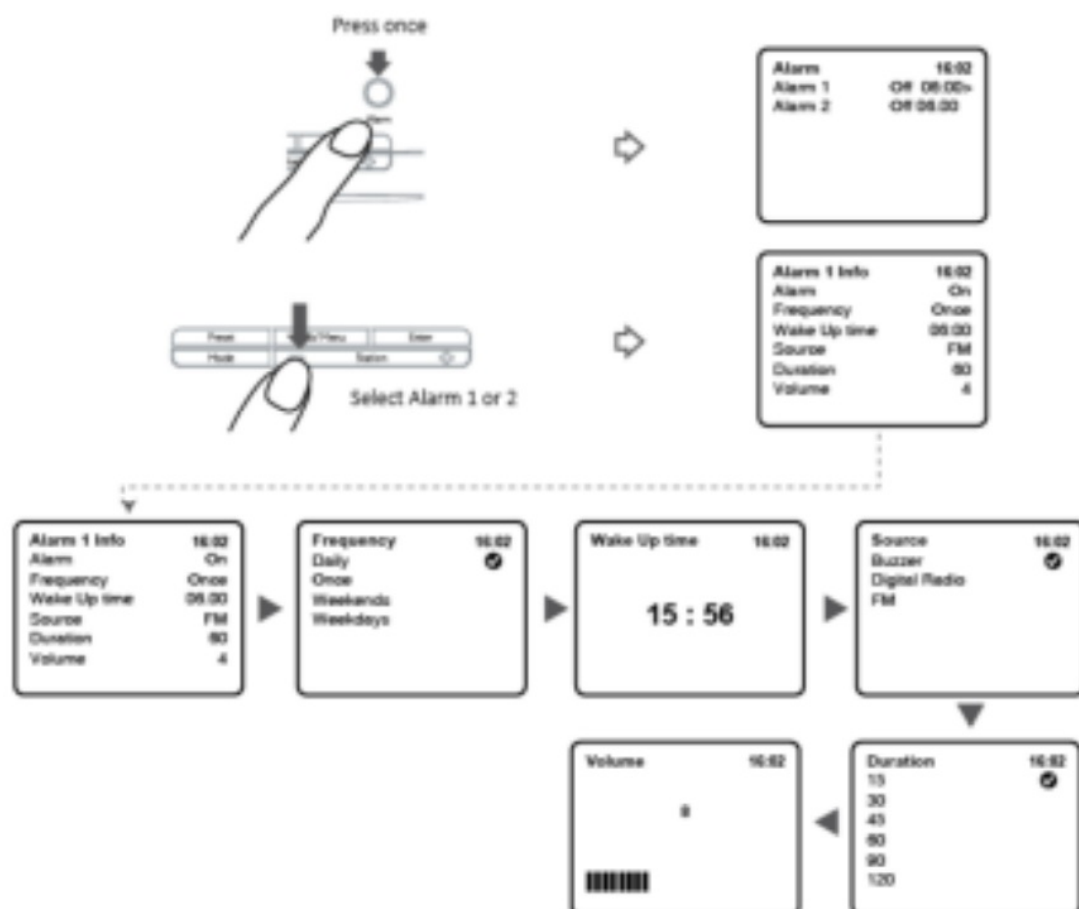
11. Preset saving



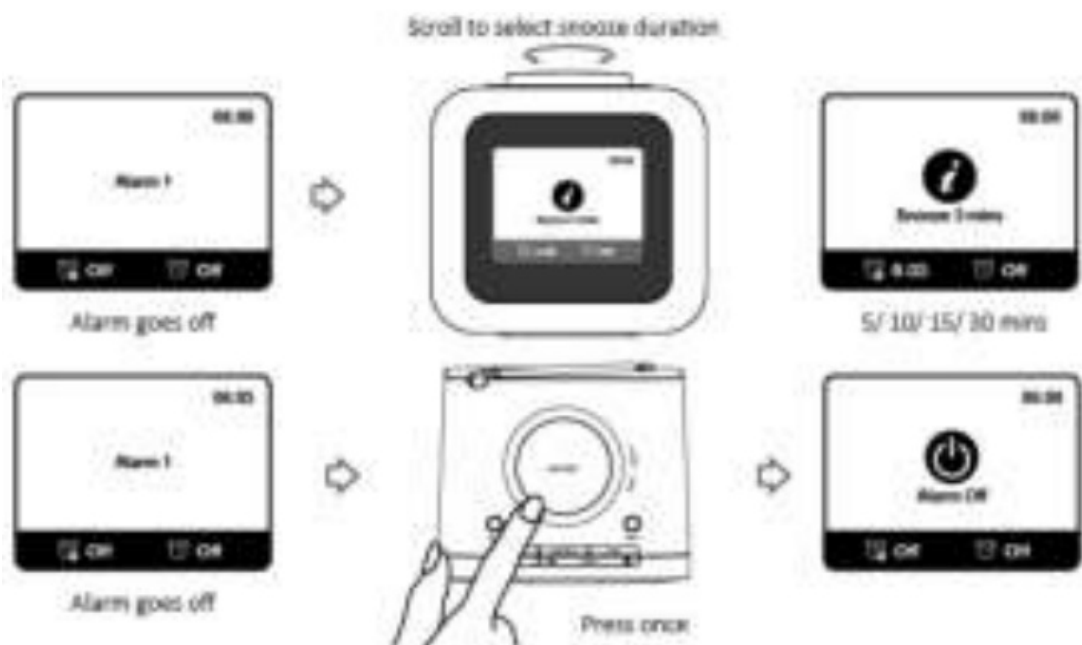
12. Recall Preset Stations



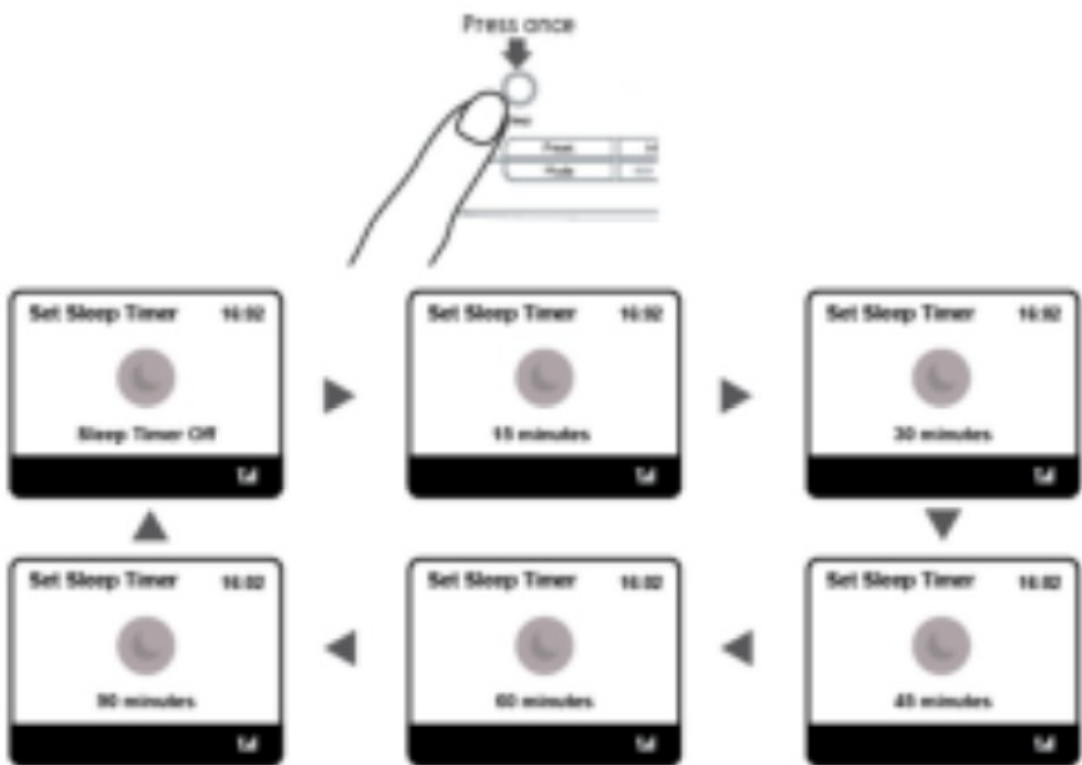
13. Alarm



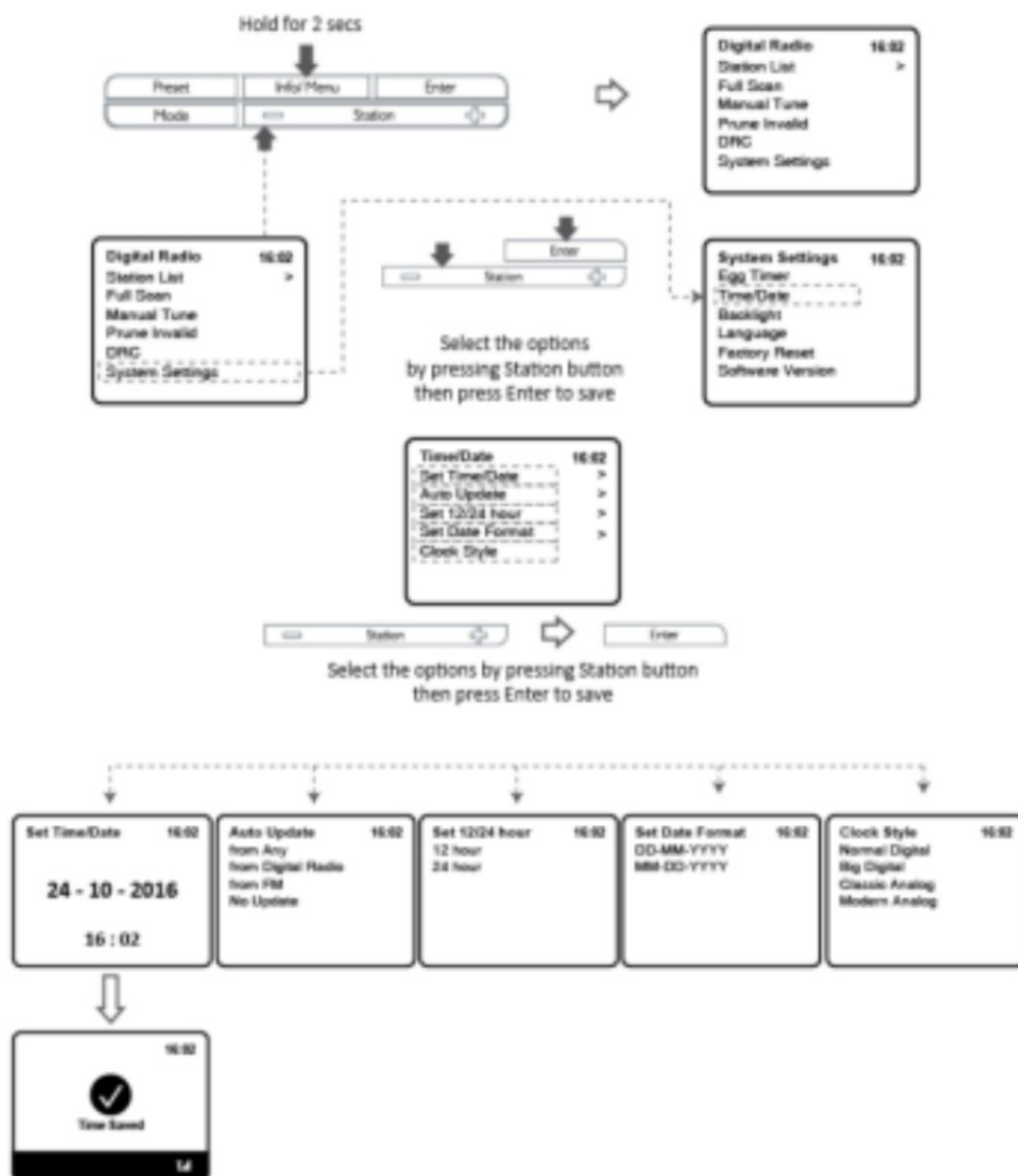
14. Snooze



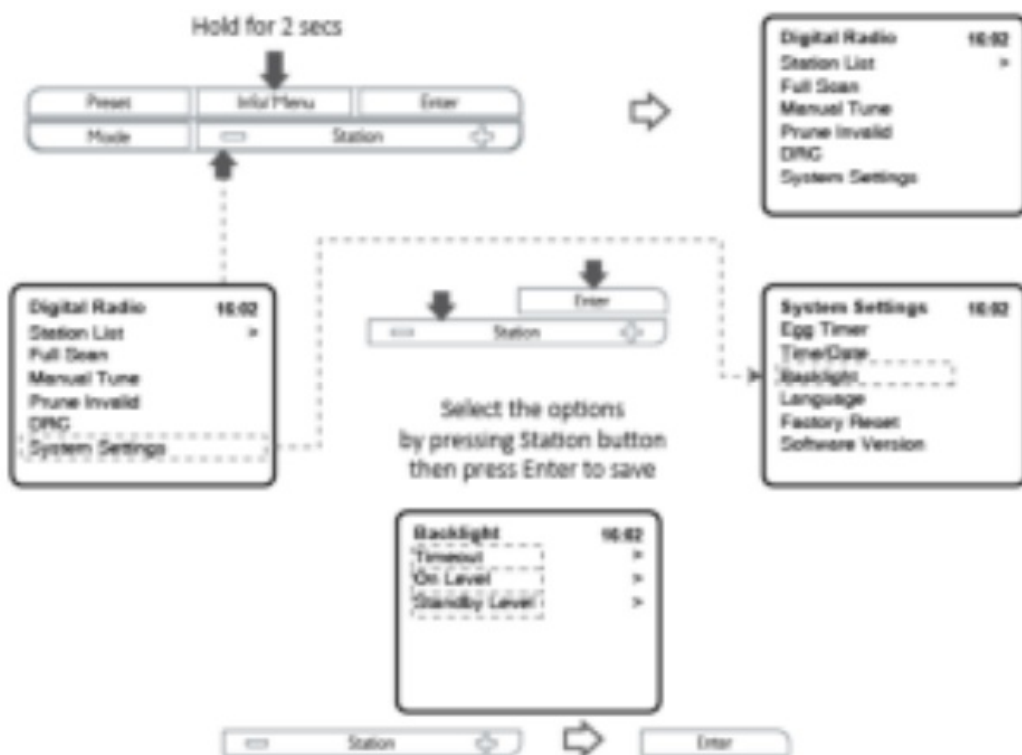
15. Sleep



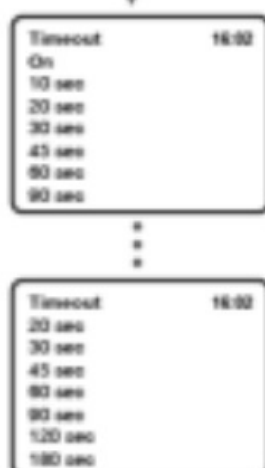
16. Time/Date



17. Backlight



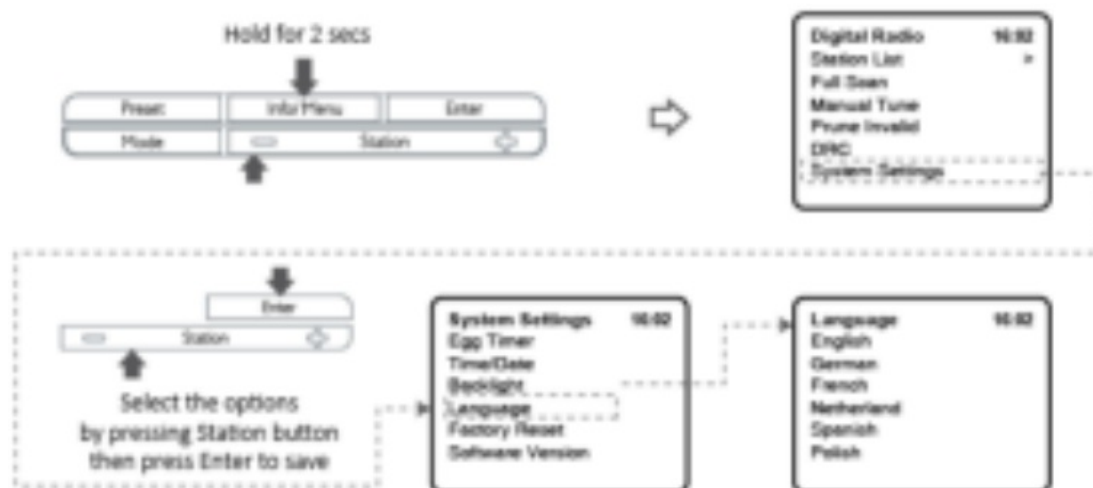
Select the options by pressing Station button then press Enter to save



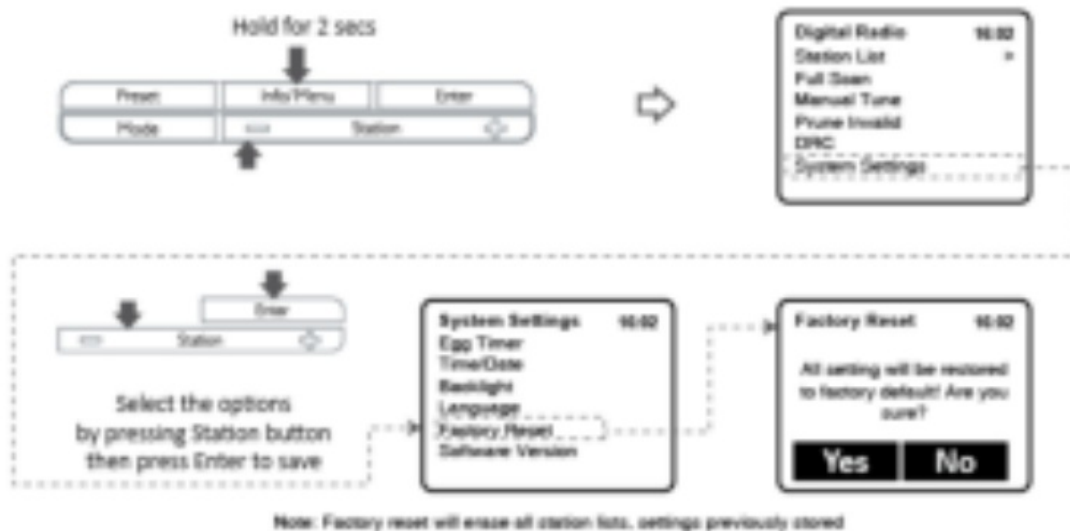
Note: when the 'timeout' is set at 'on' in the 'standby' mode. You have to enter to 'menu' first, then to change and select with different dim level, high/medium/low.

Users can further dim the backlight while the radio is on or at standby mode with the dimmer button at the back.

18. Language



19. Factory Reset



Trouble Shooting

Problem: FM Hiss/DAB burbling/intermittent cut-out/DAB No stations available message

Cause: Low signal strength

Solution: Check/move the antenna. Move radio. Rescan local (high-strength)

Error messages

'Service not available'	No DAB reception
'Signal error':	The DAB signal has been interrupted. The listed station cannot be found.
'No DAB Station':	(No name.): The current station does not broadcast an identity name.
'No stations found':	No DAB stations are available, check the aerial.
'No Radio Text':	No RDS text information is available on this station.
'No PTY':	No RDS programme type information is available.
'No Name':	No RDS station name is being broadcast.

Specifications

Description:	DAB+/FM Digital Radio
Speaker	1 x 1W RMS
Frequency Range:	FM: 87.5-108MHz DAB/DAB+: Band III 174.928-239.200MHz
LCD Display:	2.8 inches color TFT display
Power Supply (Power adapter) :	Input: 100-240V ~ 50/60Hz 0.3A max Output: 5V 1000mA
Dimensions:	98mm x 110mm x 90mm
Working Temperature:	0-45°C
The manufacturer name of the power adaptor:	Dongguan Obelieve Electronic Co., Ltd
The model number of the power adaptor:	OBL-0501000E

Information	Value and precision
Manufacturers name or trade mark, commercial registration, and address	Huazhaoxin Industrial Park B-4/F, Golden Phoenix Industrial Zone, Fenggan Town, Dongguan, Guangdong Province, People's Republic of China.
Model Identifier	OBL-0501000E
Input voltage	100-240V AC
Input AC frequency	50/60Hz
Output voltage	5.0V
Output current	1.0A
Output Power	5.0W
Average active efficiency	76.52% (230V, 50Hz)
Efficiency at low load (10%)	—
No load Power consumption	≤0.10W

Guarantee

Lenco offers service and warranty in accordance with European law, which means that in case of repairs (both during and after the warranty period) you should contact your local dealer.

Important note: It is not possible to send products that need repairs to Lenco directly.

Important note: If this unit is opened or accessed by a non-official service center in any way, the warranty expires. This device is not suitable for professional use. In case of professional use, all warranty obligations of the manufacturer will be voided.

Disclaimer

Updates to Firmware and/or hardware components are made regularly. Therefore some of the instructions, specifications, and pictures in this documentation may differ slightly from your particular situation. All items described in this guide are for illustration purposes only and may not apply to a particular situation. No legal right or entitlements may be obtained from the description made in this manual.

Disposal of the Old Device



This symbol indicates that the relevant electrical product or battery should not be disposed of as general household waste in Europe. To ensure the correct waste treatment of the product and battery, please dispose of them in accordance with any applicable local laws of the requirement for disposal of electrical equipment or batteries. In so doing, you will help to conserve natural resources and improve standards of environmental protection in the treatment and disposal of electrical waste (Waste Electrical and Electronic Equipment Directive).

CE Marking

Hereby, Commaxx B.V. Wiebachstraat 37, 6466 NG Kerkrade, The Netherlands, declares that this product is in compliance with the essential EU directive requirements.

The declaration of conformity may be consulted via techdoc@commaxxgroup.com





Service

For more information and helpdesk support, please visit www.lenco.com

Commaxx B.V. Wiebachstraat 37, 6466 NG Kerkrade, The Netherlands.



Documents / Resources

<div> Model CR-620</div> <div></div> <div><p><small>User manual: DAB+-FM Clock radio with color display Gebruiksaanwijzing: DAB+-FM klokradio met kleurdisplay Bedienungsanleitung: DAB+-FM Radioklocke mit Farbdisplay Návod k použití: Radioklok DAB+-FM s barevným displejem Manual de utilizare: Radioklok DAB+-FM cu ecran color</small></p></div>	<p>Lenco CR-620 DAB+-FM Clock Radio with Color Display [pdf] User Manual</p> <p>CR-620, DAB -FM Clock Radio with Color Display, DAB -FM Clock Radio, Clock Radio, DAB -FM Radio, Radio, CR-620</p>
--	--

References

-  Lenco.com | [Officiële Lenco Webshop](#)