



Lemorele LC06 Plus USB to HDMI Adapter User Manual

[Home](#) » [Lemorele](#) » Lemorele LC06 Plus USB to HDMI Adapter User Manual 

Lemorele



USB-A to HDMI Adapter
Cast small screen to big screen
MODEL: LC06 Plus
USER MANUAL

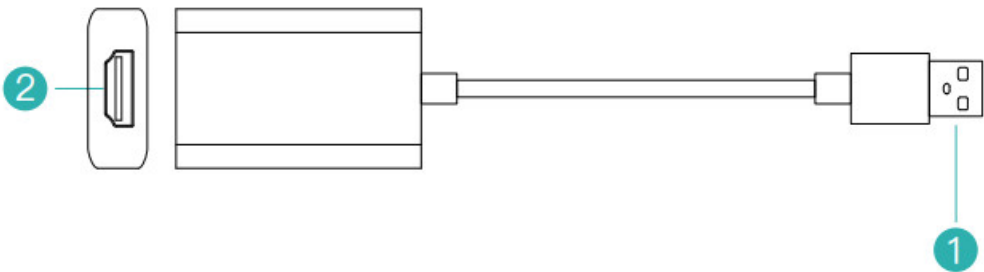
Contents

- 1 Product introduction
- 2 Product parameters
- 3 Connection diagram
- 4 UDisplay instructions
- 5 Equipment upgrade steps:
- 6 Precautions:
- 7 Documents / Resources
 - 7.1 References

Product introduction

Portable USB-A to HDMI adapter. It can connect desktop computers or laptops with USB-A port to monitors, projectors, HDTVs or other devices with HDMI port, and can extend the laptop screen to the monitor.

Product parameters

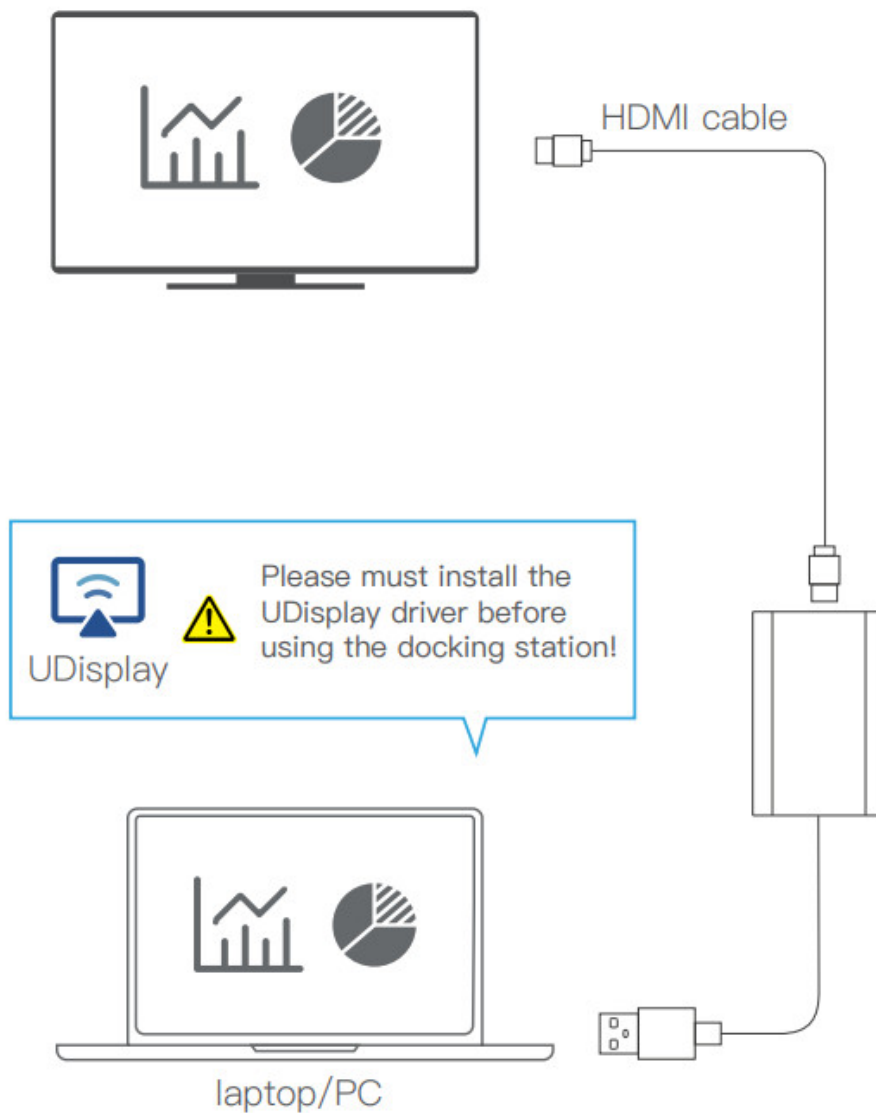


- 1. USB-A
- 2. HDMI Out

Product Name	USB to HDMI Adapter
Size	55×36×15mm
Material	ABS+Aluminum alloy
Connectors	USB-A, HDMI
HDMI Out	1080P
Compatible Systems	Windows10 and above, Mac OS10.15 and above

Connection diagram

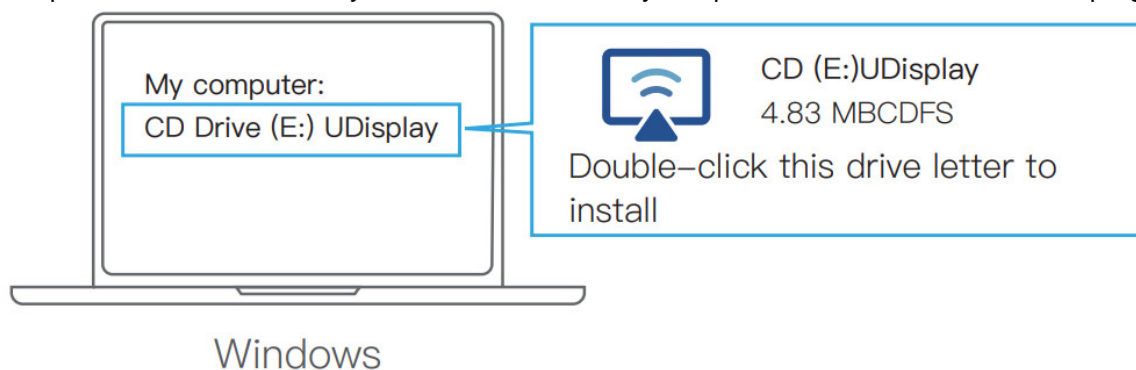
Monitor/Projector/TV ①



UDisplay instructions

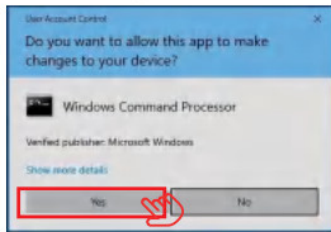
Windows

Connect this product for the first time, you need to first enter my computer → double-click to run the program



After entering the application interface, it can be used normally. The connection status displays as connected, and the screen can be displayed.

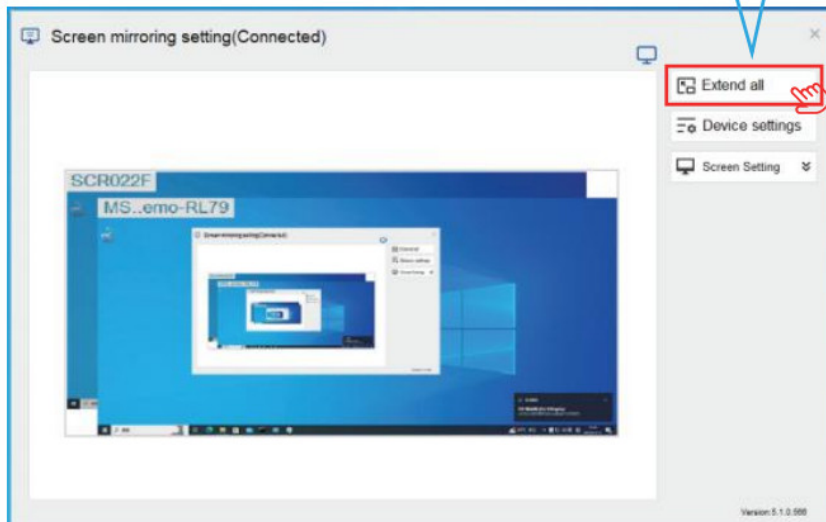
Opening the extended screen function for the first time requires confirmation according to prompts Install the device as shown in Figure 1 or Figure 2 (Note: During the installation process, the computer may restart, which is a normal phenomenon.)



Figure(1)



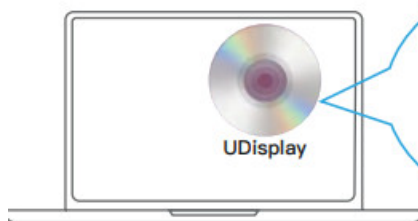
Figure(2)



Macbook Air/Pro

First time connecting to this product, click on the icon and run the program

1



Macbook

After inserting the product into the MacBook, the CD-ROM driver pops up in the upper right corner of the desktop, and click to install the UDisplay application. Finally, follow the prompts and follow up.

2



Macbook

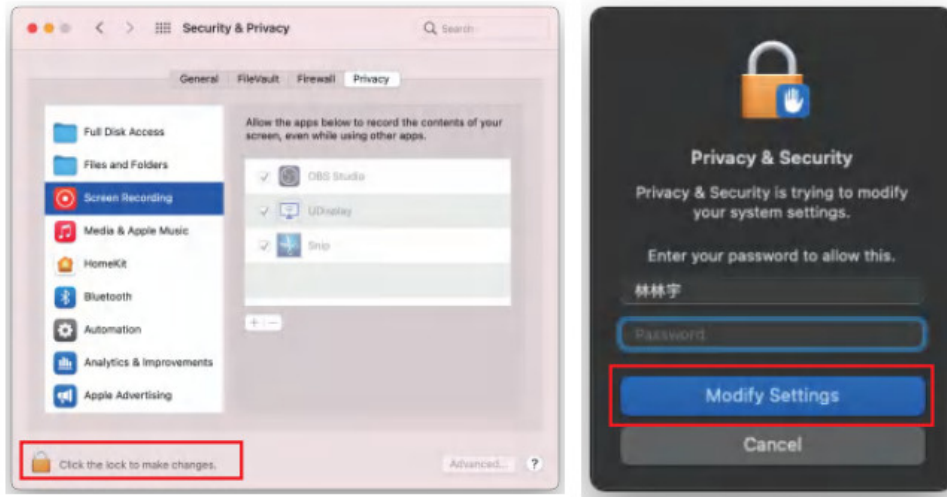
Extension switch

Please follow the next steps to complete this necessary setting!

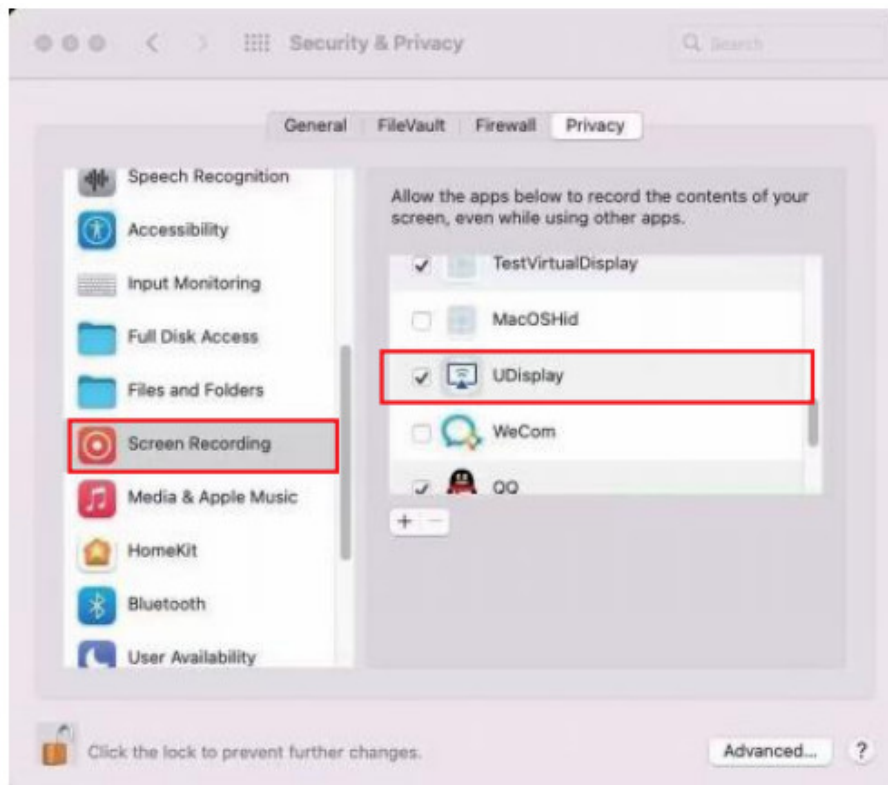
The first use requires opening the following three permissions



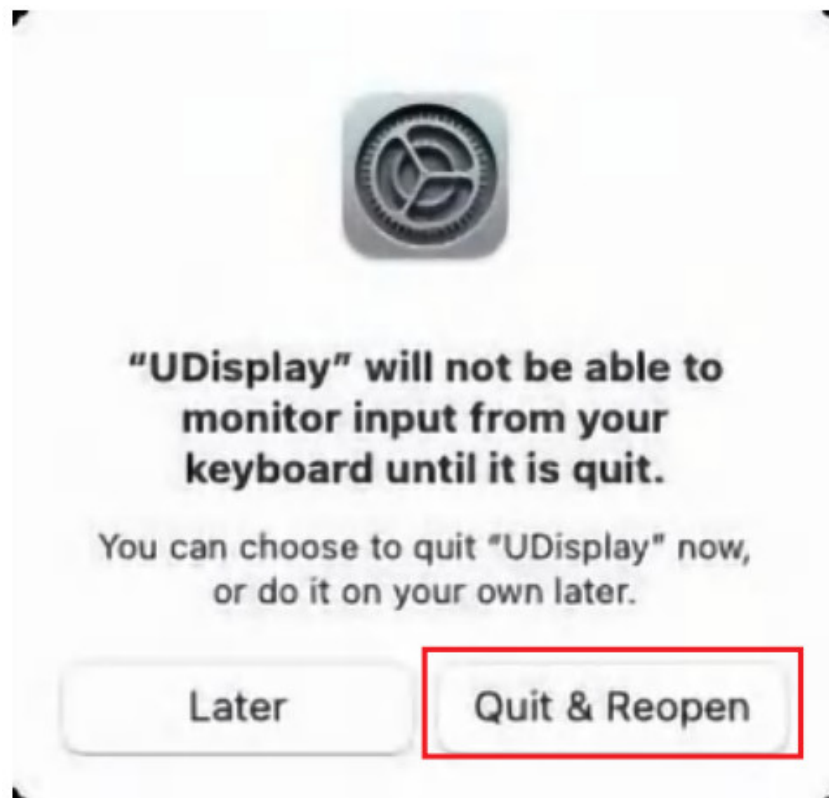
Click the lock button, enter the computer password, and click unlock;



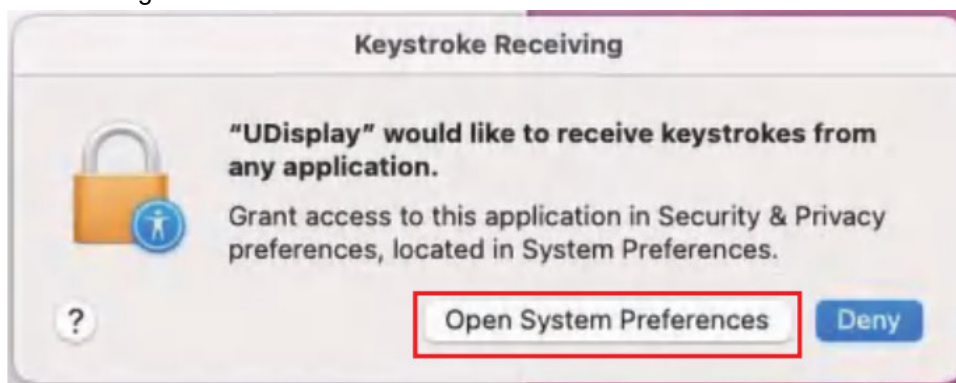
Click on "screen recording" and check UDisplay



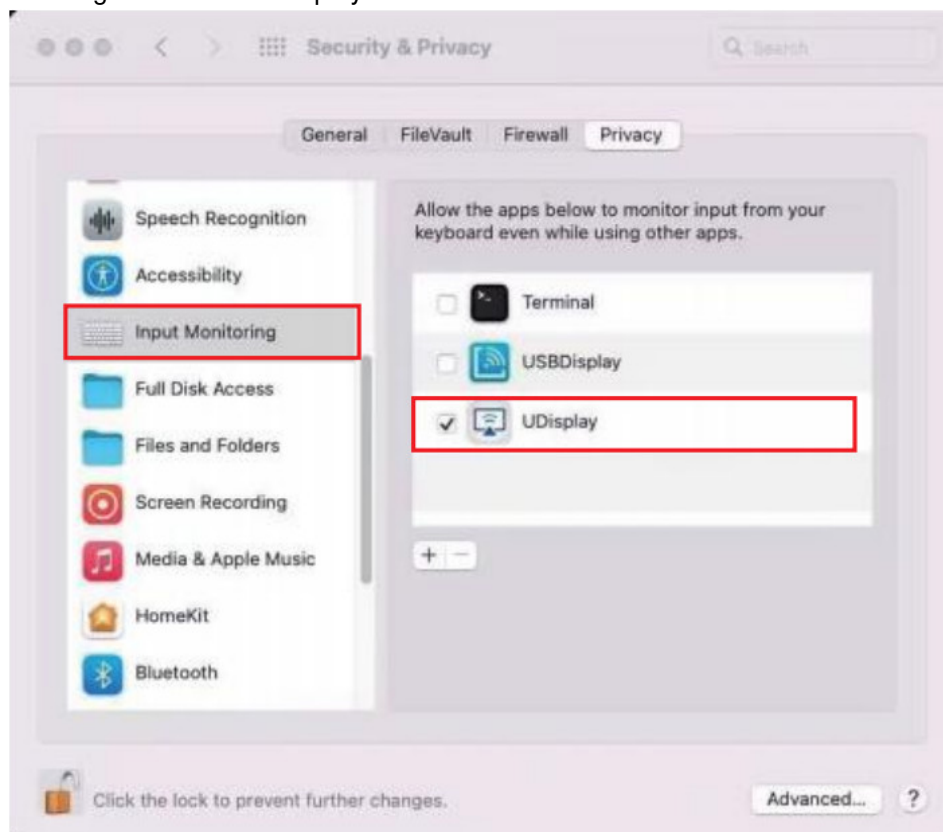
Click to "Quit and reopen"



Turn on "Keystroke Receiving"



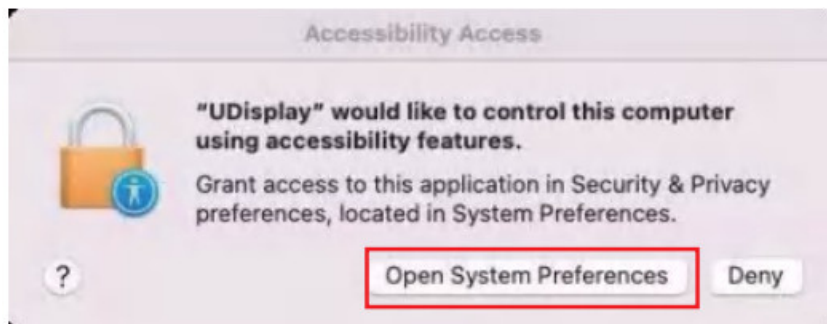
Click on "Input Monitoring" and check UDisplay



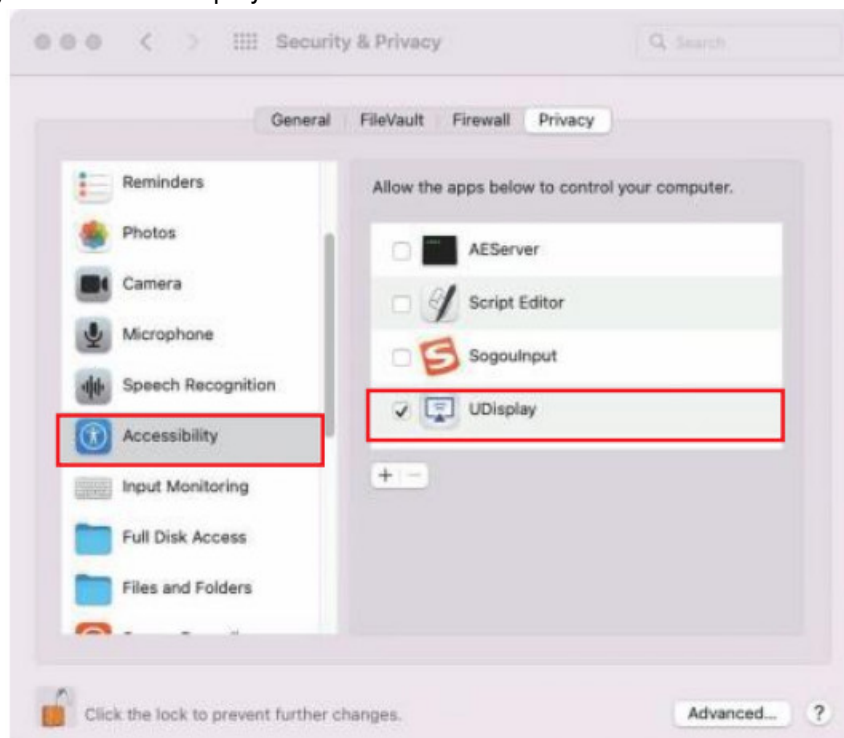
Click to "Quit and reopen"



Turn on "Accessibility Access"



Click on "Accessibility" and check UDisplay

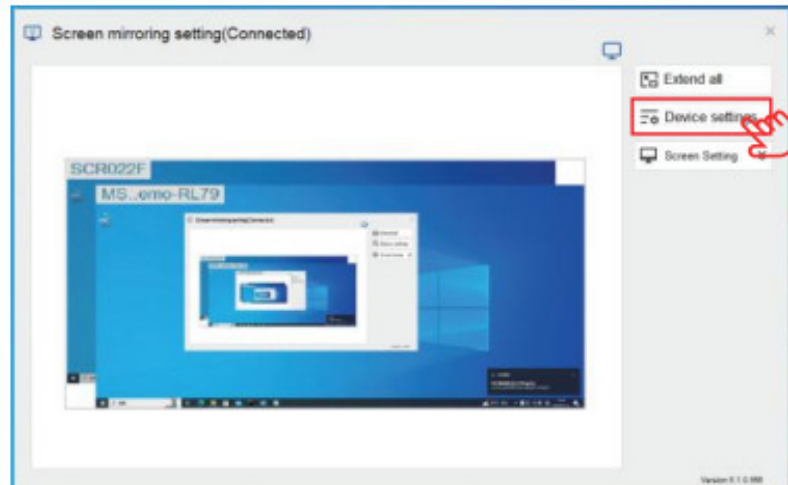


Once the settings are completed, the screen can be projected.

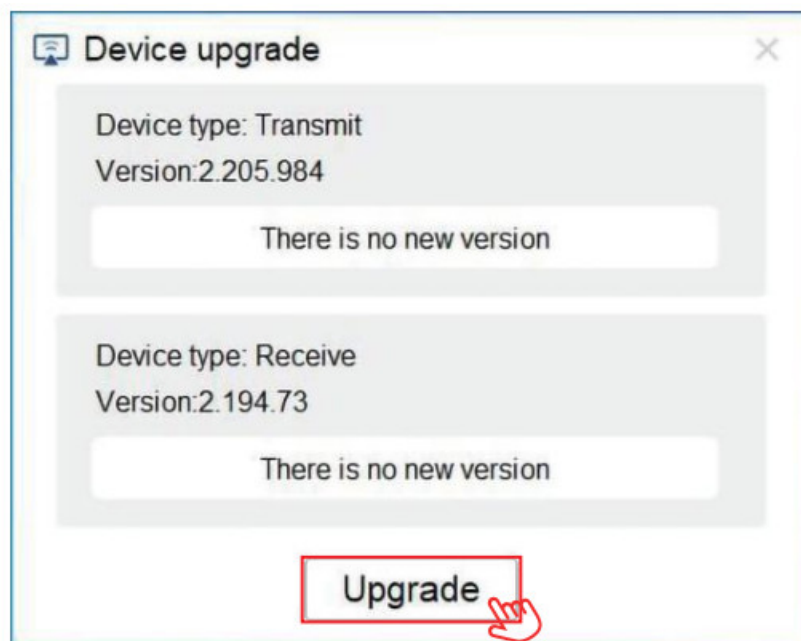
Equipment upgrade steps:

Windows

1. Enter the “UDisplay” and click on “Device Settings – Device Version”;



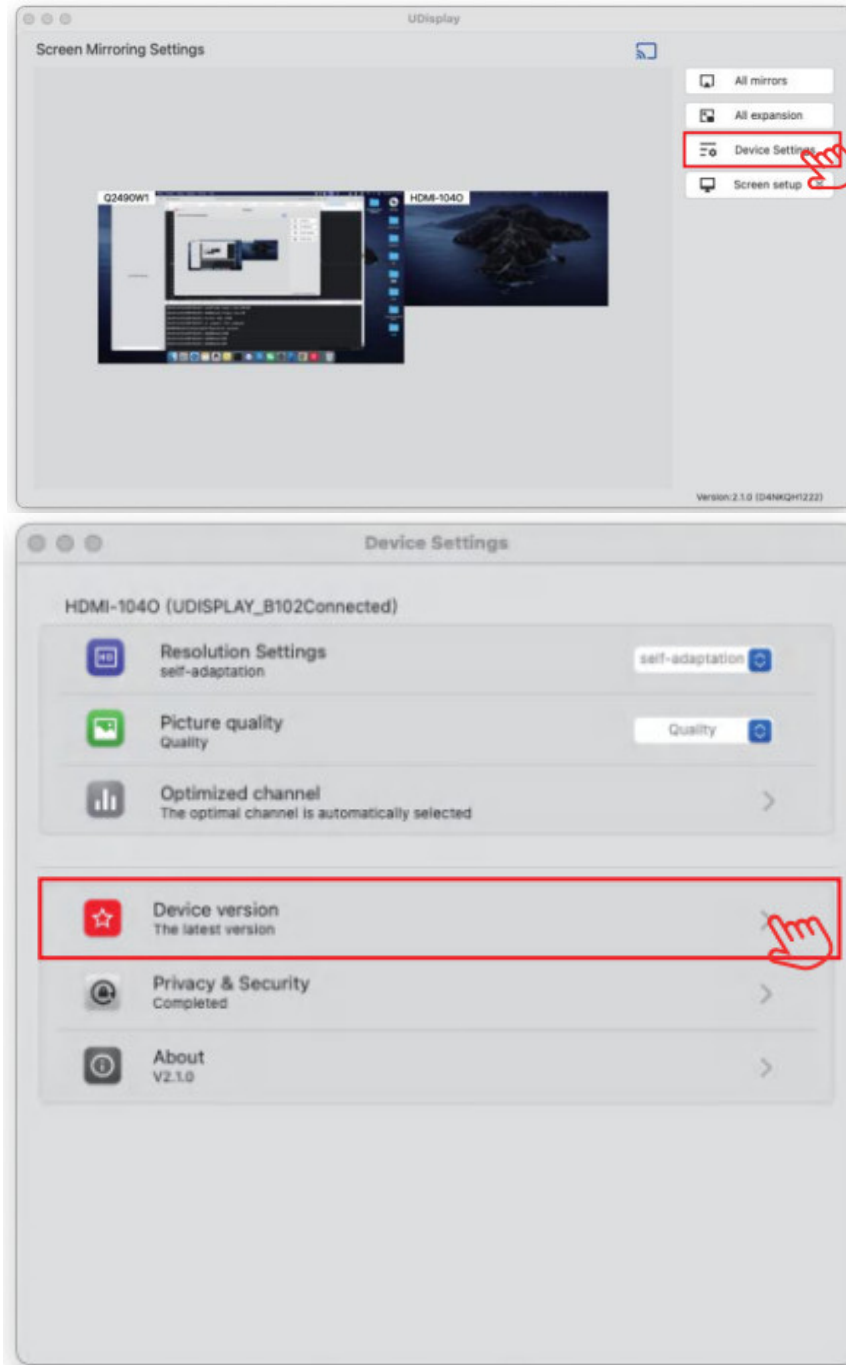
2. Select the device to be upgraded, click “Wait for Upgrade – Start Upgrade”;



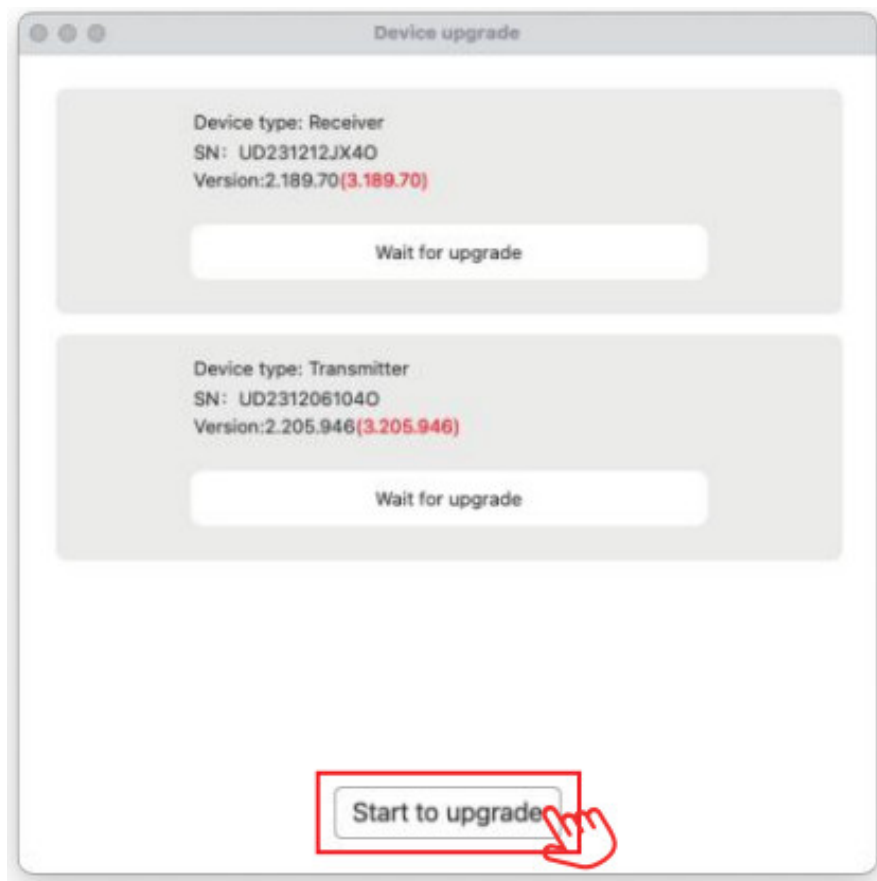
3. After the progress bar is completed and the device is restarted, the upgrade will be successful.

Macbook Air/Pro

1. Enter the “UDisplay” and click on “Device Settings – Device Version”;



2. Select the device to be upgraded, click “Wait for Upgrade – Start Upgrade”;



3. After the progress bar is completed and the device is restarted, the upgrade will be successful.

Precautions:

1. Mac computers need to manually open the UDisplay application during the first run.
2. When there is an exception in the extended mode, please confirm that the Mac is used as a built-in display in the Mac display settings.
3. UDisplay only supports 1080P output.
4. The supporting system is Windows 10 and above, and Mac OS10.15 and above. Please upgrade your computer to the latest system. (Android and Linux are not supported)
5. This product does not record any personal data, please rest assured to use it!



Documents / Resources

	Lemorele LC06 Plus USB to HDMI Adapter [pdf] User Manual LC06 Plus USB to HDMI Adapter, LC06, Plus USB to HDMI Adapter, USB to HDMI Adapter, HD MI Adapter, Adapter
--	--

References

- [User Manual](#)

This website is an independent publication and is neither affiliated with nor endorsed by any of the trademark owners. The "Bluetooth®" word mark and logos are registered trademarks owned by Bluetooth SIG, Inc. The "Wi-Fi®" word mark and logos are registered trademarks owned by the Wi-Fi Alliance. Any use of these marks on this website does not imply any affiliation with or endorsement.