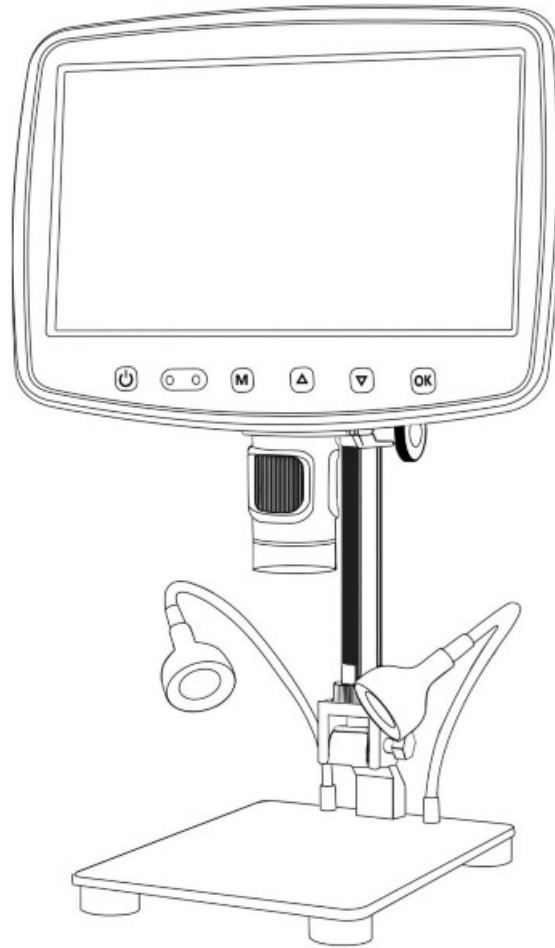


Leipan MS1 Digital Microscope with 7 LCD Screen User Manual

[Home](#) » [Leipan](#) » Leipan MS1 Digital Microscope with 7 LCD Screen User Manual 

Leipan

MS1 Digital Microscope
(7-Inch)



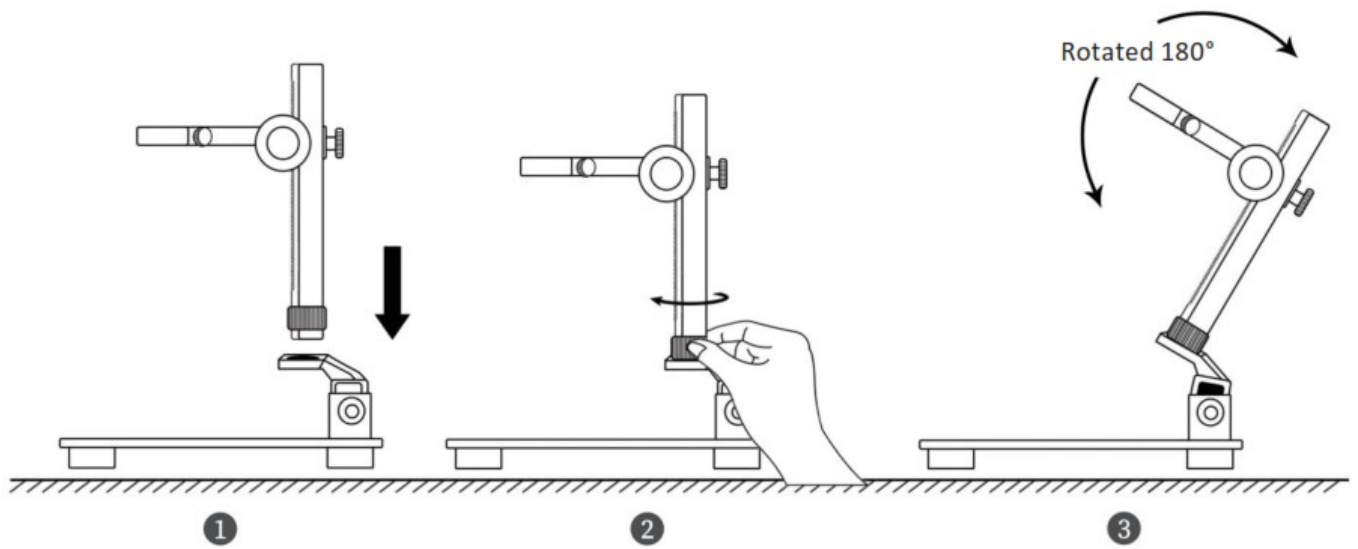
User Manual V1.0

Contents

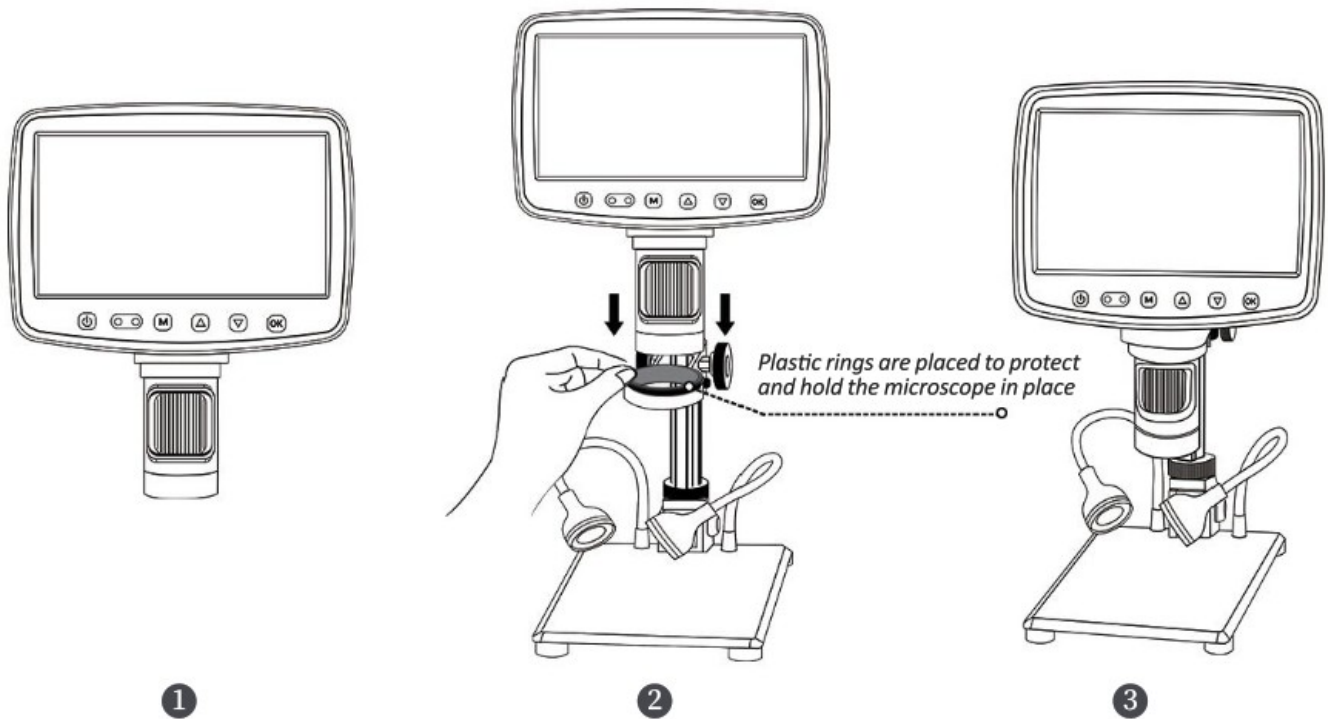
- [1 Installation](#)
- [2 Parts and Functions](#)
- [3 System Function Description](#)
- [4 Work with PC](#)
- [5 Specifications](#)
- [6 Documents / Resources](#)
 - [6.1 References](#)
- [7 Related Posts](#)

Installation

Bracket installation



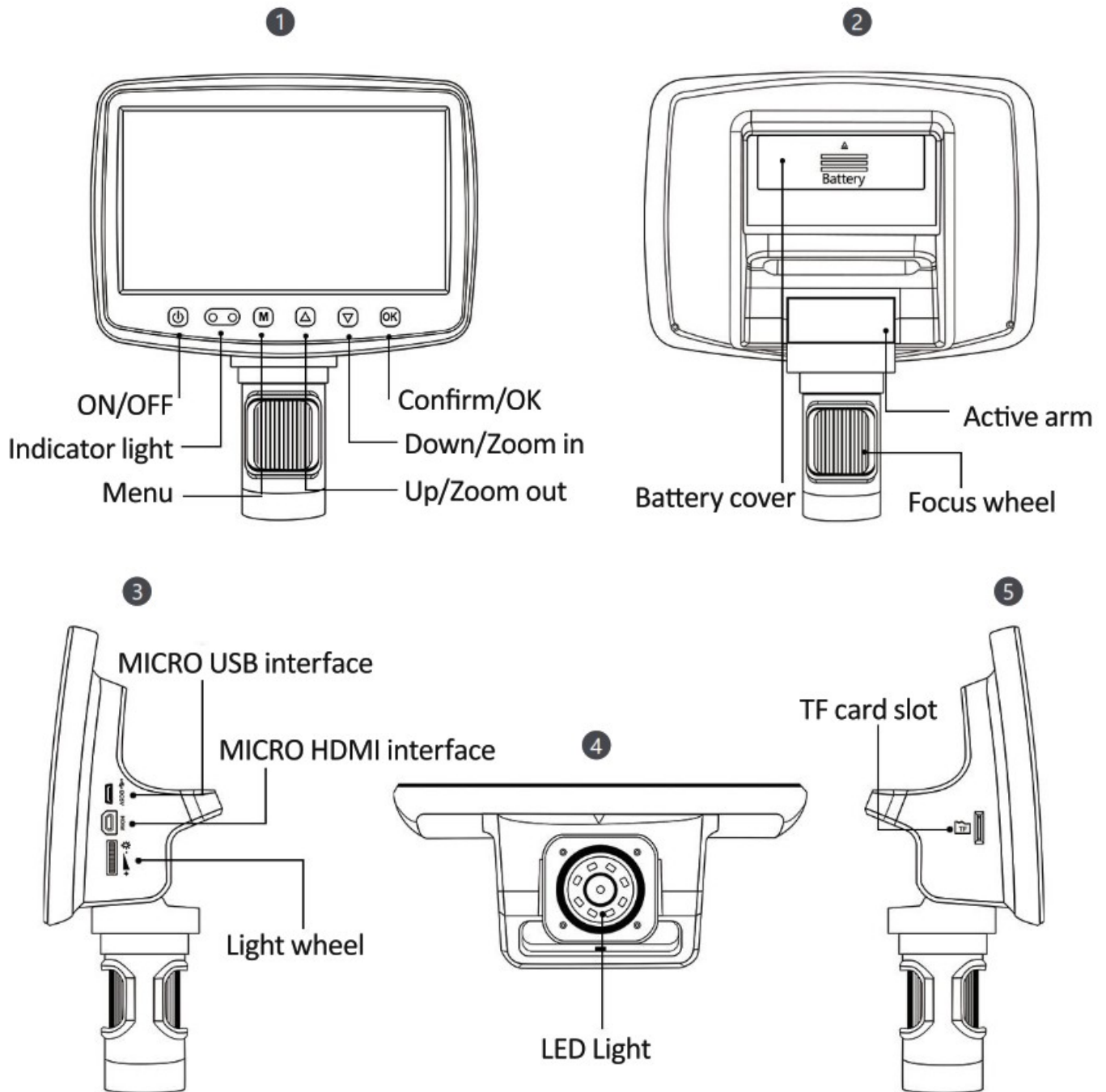
Microscope installation



Parts and Functions



Notice: The picture is for reference only, please refer to the actual object



Parts description

ON/OFF button: Long press to turn on/off the device. When the machine is powered on, short press to dim the display.

Indicator light: In charging condition , the indicator light is red ; In working condition the indicator light is blue.

Up/Down button: When entering the Menu or reads a saved file, use this button to switch between different options. In Photo or Video mode, press this button to digital zoom in/out.

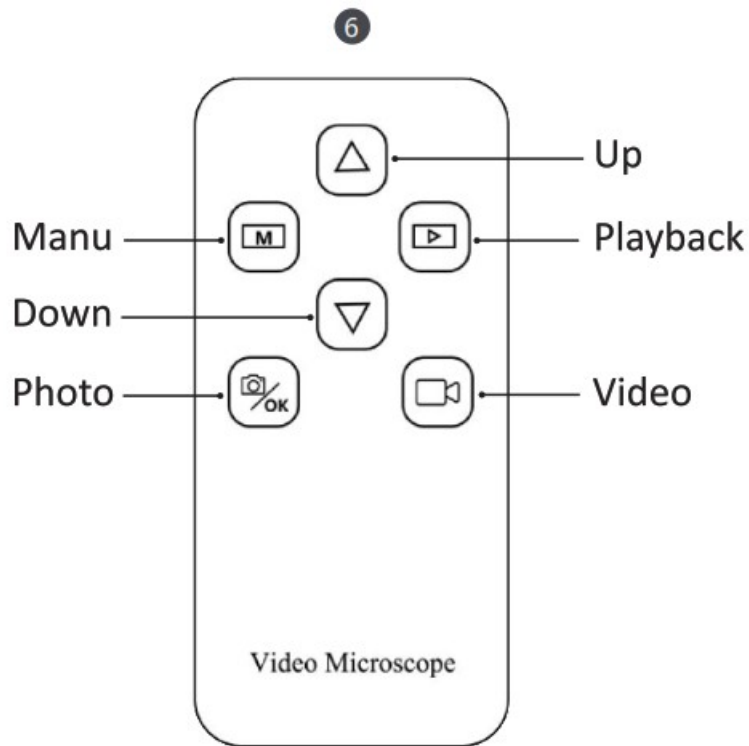
Menu button: When the device is powered on, press the “M” button to enter or exit the menu, when entering the Menu mode, short press “M” button to return to previous interface; and long press to switch to three modes: Photo/Video/Playback.

OK button: In Photo mode, short press to take picture; In Video mode, this button is the start and end of video; In Playback mode, this button is the confirm button.

Micro USB interface: Support DC5V charging and USB data transfer.(Note: When the USB data cable is removed, the device will automatically shut down, which is a normal phenomenon. If you need to continue using the device, restart it)

TF card slot: Supports a maximum of 32GB (Please select C10). **Micro HDMI interface:** High Definition Multimedia Interface.

Light wheel: Turn the knob to adjust the brightness of LED light. **Focus wheel:** Rotate this wheel to focus in photo or video mode. **Active arm:** Adjustable angle of display screen



Remote control description

Photo: In working condition, press this key to switch to the photo mode, press again to take a picture. In menu mode, press this key to confirm the selection.

Video: In working condition, press this key to switch to the video mode, press again to record and third time press to end record.

Playback: In working condition, press this key to switch to the playback mode, press again to exit playback mode.

Manu: Press to enter the menu settings.

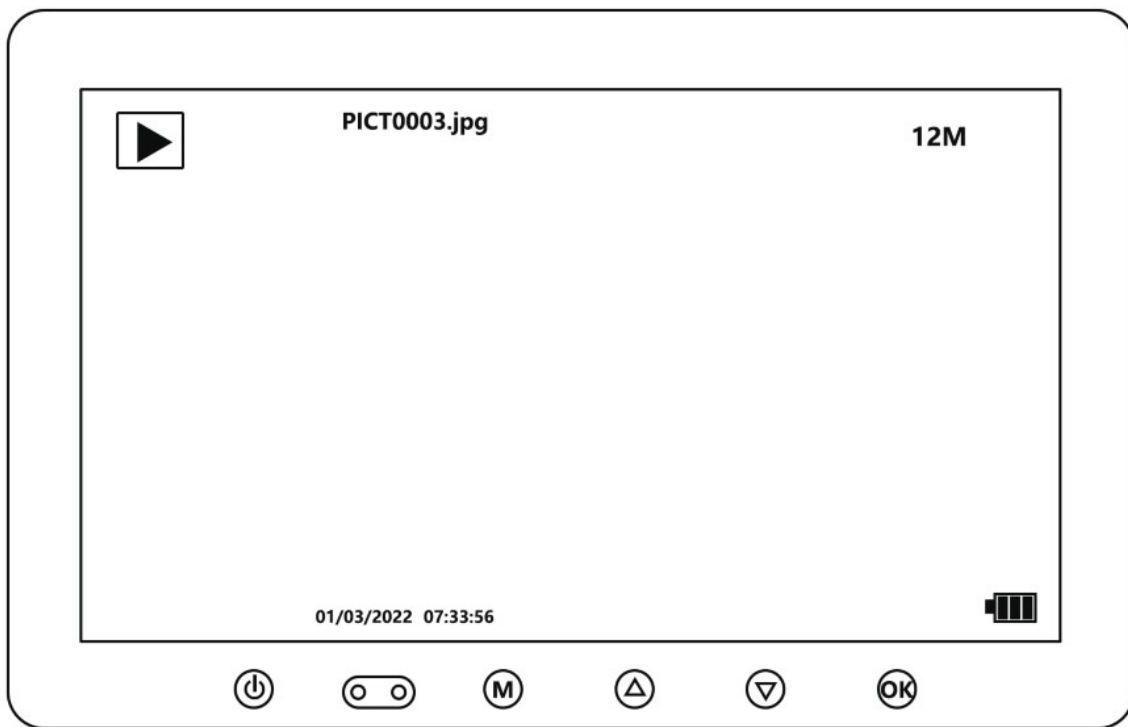
Up/Down: In Photo or Video mode, press this key to digital zoom in/zoom out; In Menu or save mode, press this key to switch options.

System Function Description



Notice: If you need to take pictures or videos, please insert the TF card first.

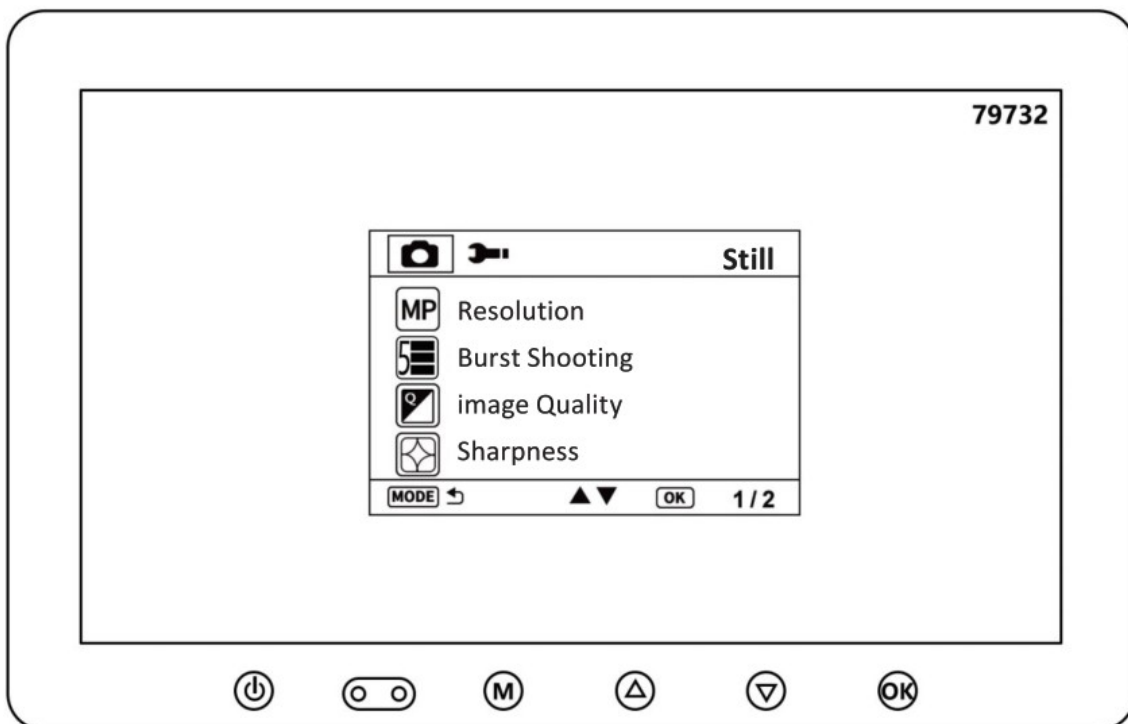
Playback mode



As shown in the fig, the stored information includes photos and videos, which can be switched between different photos and videos through the Up/Down key, and video can be played and paused by pressing the Photo button.

Menu interface

Press Menu to enter the menu interface, as shown in the fig.



Enter the setting interface in the Photo mode, you can modify pictures' parameters and general settings; Similarly, if you want to modify the video parameters, please enter the setting interface in the Video mode. After setting, short press the Menu button to exit the setting interface.

Menu interface description

Video Resolution: 1920* 1080, 1280 *720

Photo Resolution: 12M,10M, 8M, 5M, 3M, 2MHD, 1.3M, VGA

Exposure Compensation: There are 13 exposure compensation values from +2.0 to -2.0.

Date Tag: After selecting the date or date/ time, photos and videos will have the date or date and time label.

Date/ Time: Sets the date and format/ time parameters.

Automatic Shut-down: After setting the automatic shutdown time, the device can automatically shut down when no one operates.

Screen Protection: Select the appropriate time, so that the device will automatically extinguish the screen when no one operates.

Language Settings: Set the device language.

Light Source Frequency: Mains frequency setting.

Line Assist: Display and hide the “-F” line in the photo and video interface.

Burst Shooting: When this option is enabled, you can take 5 photos in a row.

Image Quality: High quality, Standard, Economic.

Sharpness: Intensive, Standard, Soft.

ISO: Auto, 100, and 200.

Formatting: Formats the memory.


Default Setting: Restore factory settings.

Version: View the version of the current software.

Work with PC

Software download

Download the applicable software

1. For Windows 8, Windows 10 or higher system, search “hiView” () in the Microsoft Store to download it.
2. For Windows 7 and Windows XP, download the software from the website: <http://soft.hvscam.com>

 简体中文 |  English


HiViewSetup1.4 for mac

Support:S4 X4 W01 DM3 DM4 DM7 DM8 DM9 MS1 MS2 MS3 MS4 MS5

 [Click to read the instructions](#)

HiViewSetup1.4 for windows

Support:S4 X4 W01 DM3 DM4 DM7 DM8 DM9 MS1 MS2 MS3 MS4 MS5

 [Click to read the instructions](#)

Amcap v3.0.9 for windows

Support W01 DM1 DM2 DM3 DM4 DM7 DM8 DM9 MS1 MS2 MS3 MS4 MS5

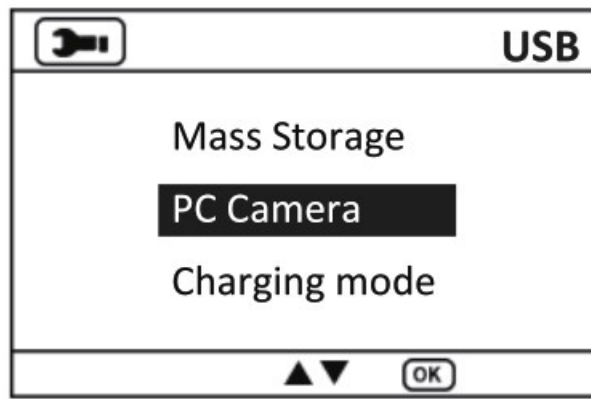
 [Click to read the instructions](#)

3. For Mac OS X 10.5 or higher system, search “hiView” in the APP Store to download it.

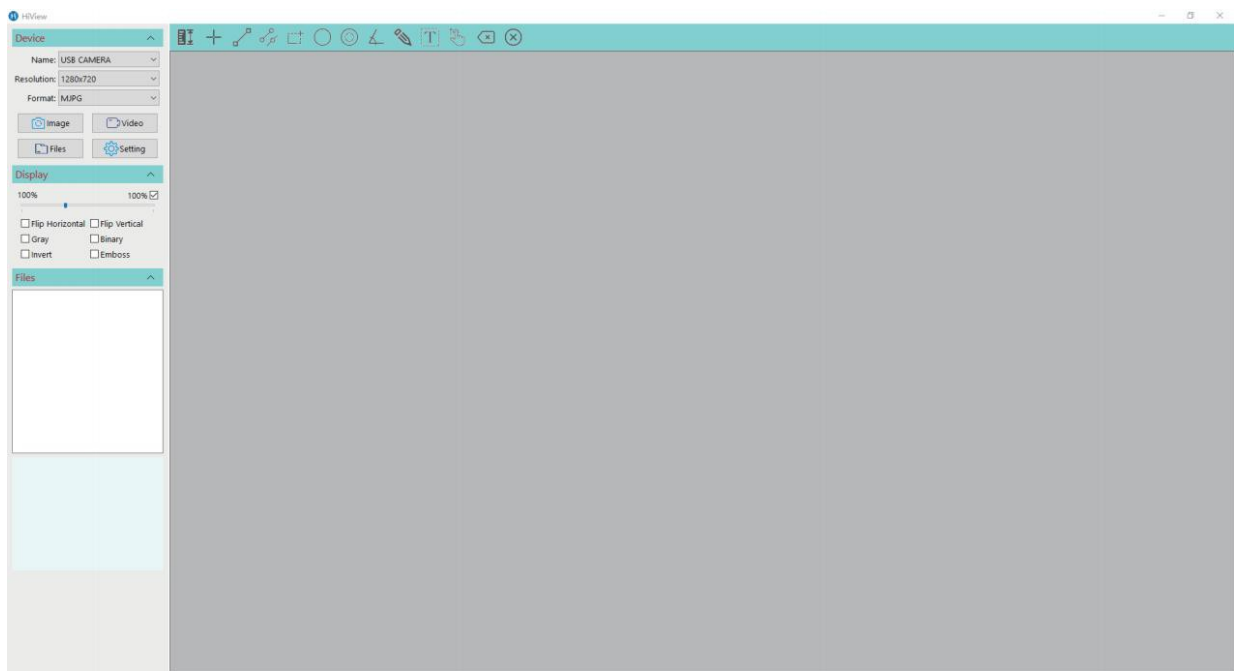
Operating steps

Step 1. Connect the microscope to the computer via a USB cable.

Step 2. Select “PC Camera” on MS1.

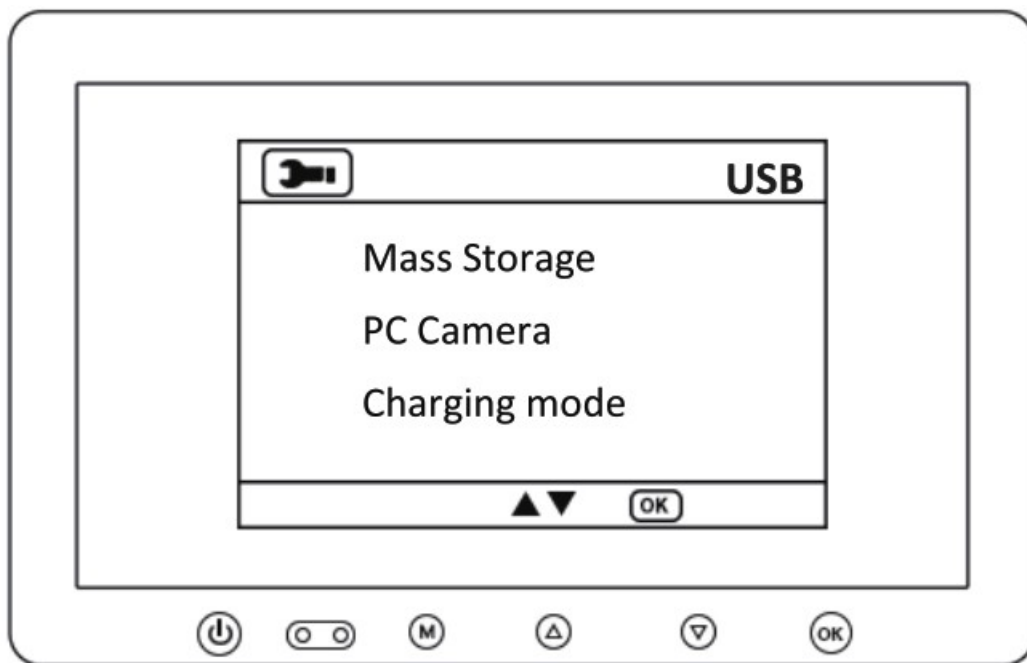


Step 3. Run hiView, then you can click Photo or Video on your computer to take photos and videos, which will be saved on your computer disk.



Function select

When the device is connected to the computer through a USB cable, the device can be used in Mass Storage / PC Camera / Charging mode.



Function introduction

1. Mass Storage: Enter the device memory on the PC, and you can view and process the photos and video files inside. At this time, only ON/OFF and Light Wheel on MS1 are available.
2. PC Camera: only ON/OFF and Light Wheel on MS1 are available at this time. Open the software hiView on the PC to display the image.
3. Charging mode: MS1 enters the charging state, and the equipment can be operated normally if necessary.

Specifications

Item	Specifications
Product Name	MS1 Digital Microscope
Lens Optic Size	1/2.8"
Photo Resolution	12M, 10M, 8M, 5M, 3M, 2MHD, 1.3M, VGA
Video Resolution	1080FHD (1920x1080), 1080P (1280°720)
Video Format	AVI
Digital Zoom	Support
Illuminant	8 LED lights (brightness adjustable)
Focusing Range	10-40mm (can watch distant view)
PC Resolution and Image Transfer Rate	1280x720/ 26fps
Lens Construction	5H+IR
Aperture	F0.5.
Lens Angle	16°
Interface and Signal Transmission Mode	Micro / USB 2.0 / HDMI
Operating Temperature	-20°C – +55°C
Operating Humidity	30%-85%RH
Working Current	600mA
Power Dissipation	3W
PC Operating System	Windows Xp, Win7, Win8.1, Win10, Mac OS x 10.5 or higher
Language	English, French, Spanish, Portuguese, Arabic, German, Italian, Simplified Chinese, Traditional Chinese, Russian, Japanese, Korean


Warning

- The transmission speed of the TF card should be C10. If the transmission speed of the TF card is lower than C10, the failure of picture and video storage may occur during use;
- Keep the microscope away from heat sources, open fires, flammable and explosive gases (liquids);
- Keep the microscope away from water, beverages and corrosive liquids;
- Please avoid dust entering the microscope lens and interior;
- Please prevent the microscope from being hit or violently shaken;
- Avoid storing the microscope where there is a risk of falling, which may cause internal lens deviation or damage to other parts of the microscope, as well as other irreparable damage.

If you have any question, please contact our company The final interpretation right belongs to the company

Leipan

Documents / Resources

<p>MS1 Digital Microscope (7-inch)</p>  <p>User Manual V1.0</p>	<p>Leipan MS1 Digital Microscope with 7 LCD Screen [pdf] User Manual</p> <p>MS1 Digital Microscope with 7 LCD Screen, MS1, Digital Microscope with 7 LCD Screen, Microscope with 7 LCD Screen, 7 LCD Screen, LCD Screen, Screen</p>
--	---

References

- [User Manual](#)