



# legrand WZ3RCB46 Wireless AC Smart Scene Controller Instruction Manual

[Home](#) » [Legrand](#) » legrand WZ3RCB46 Wireless AC Smart Scene Controller Instruction Manual 

## legrand WZ3RCB46 Wireless AC Smart Scene Controller Instruction Manual



### Contents

- [1 REGULATORY INFORMATION](#)
- [2 BEFORE YOU START](#)
- [3 WHAT YOU NEED](#)
- [4 INSTALLATION](#)
- [5 SETUP](#)
- [6 GETTING TO KNOW YOUR SCENE CONTROLLER](#)
- [7 Documents / Resources](#)
  - [7.1 References](#)
- [8 Related Posts](#)

## REGULATORY INFORMATION

**FCC NOTICE:** This device complies with Part 15 of the FCC rules. Operation is subject to the following two conditions: (1) this device may not cause harmful interference, and (2) this device must accept any interference received, including interference that may cause undesirable operation

This equipment has been tested and found to comply with the limits for a Class B digital device, pursuant to Part 15 of the FCC Rules. These limits are designed to provide reasonable protection against harmful interference in a residential installation. This equipment generates, uses, and can radiate radio frequency energy and, if not installed and used in accordance with the instructions, may cause harmful interference to radio communications. However, there is no guarantee that interference will not occur in a particular installation.

If this equipment does cause harmful interference to radio or television

reception, which can be determined by turning the equipment off and on, the user is encouraged to try to correct the interference by one or more of the following measures:

- Reorient or relocate the receiving antenna
- Increase the separation between the equipment and receiver
- Connect the equipment into an outlet on a circuit different from that to which the receiver is connected
- Consult the dealer or an experienced radio/TV technician for help. This equipment complies with FCC radiation exposure limits set forth for an uncontrolled environment. This equipment should be installed and operated with a minimum distance of 20 cm between the transmitter's radiating structure(s) and the body of the user or nearby persons

**NOTE:** Any changes or modifications to this device that are not expressly approved by the manufacturer will void the warranty and the user's authority to operate the equipment.

Contains FCC ID: 2AU5D-WRCB4

**IC NOTICE:** This device complies with Industry Canada license exempt RSS standards. Operation is subject to the following two conditions: (1) this device may not cause interference; and (2) this device must accept any interference, including interference that may cause undesired operation of the device

**RF EXPOSURE STATEMENT:** This equipment meets the SAR evaluation limits given in RSS-102 Issue 5 requirements at the minimum separation distance of 20 cm to the human body. Note: Any changes or modifications to this device that are not expressly approved by the manufacturer, will void the warranty and the user's authority to operate the equipment.

## BEFORE YOU START

Review this guide in its entirety. Consult an electrician with any questions or if you are unsure of your abilities.

**Warning:** Incorrect installation could result in death, serious injury, and/or damage to your home or devices.

**CAUTION:** To reduce the risk of injury and/or overheating and damage to other equipment

- Do not install to control a receptacle or a motor-controlled appliance.
- For dry, indoor use only.
- Do not use to power medical equipment.
- Connect the smart scene controller to a 120 VAC, 60 Hz power source ONLY.
- Always use copper wire to install the smart dimmer & follow all applicable local & national electrical codes.

## WHAT YOU NEED

**Required:**

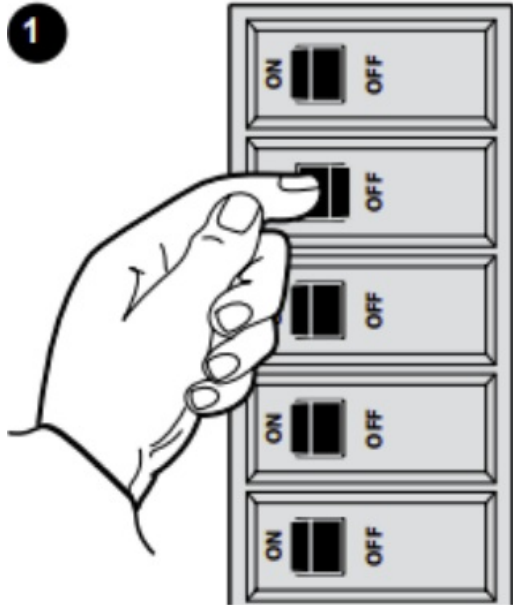
- Phillips-head screwdriver
- Flat blade screwdriver

### You May Also Need:

Voltage tester, pliers, wire cutter, wire stripper, electrical tape, flashlight, wiring leads (included), and wire nuts (included).

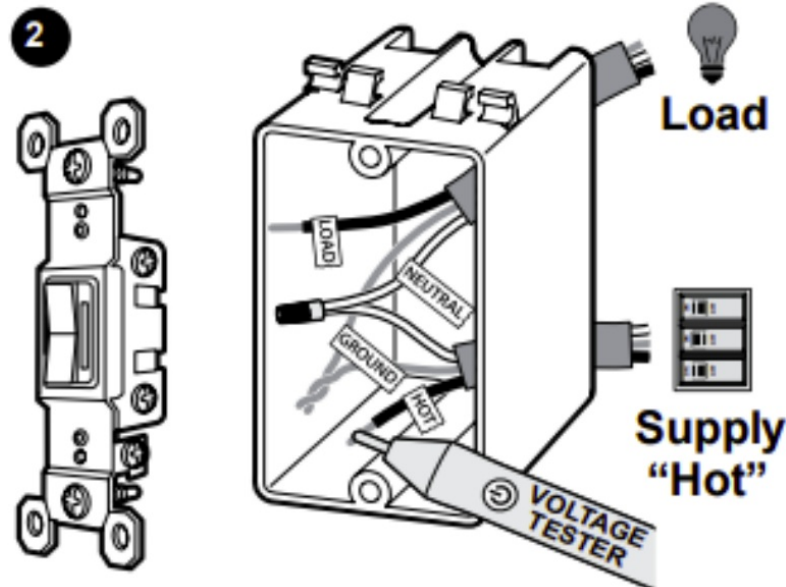
## INSTALLATION

### Turn Off Power To Device At Circuit Breaker



**NOTE:** Ensure power is off to all devices in electrical box.

### Remove Existing Device (if applicable)



Check

**a. HOT**

purpose of this guide. Do not touch or let "hot" wire contact other wires.

**b. NEUTRAL:** Creates a path to return current to the power source when the device is off. Required for your device installation.

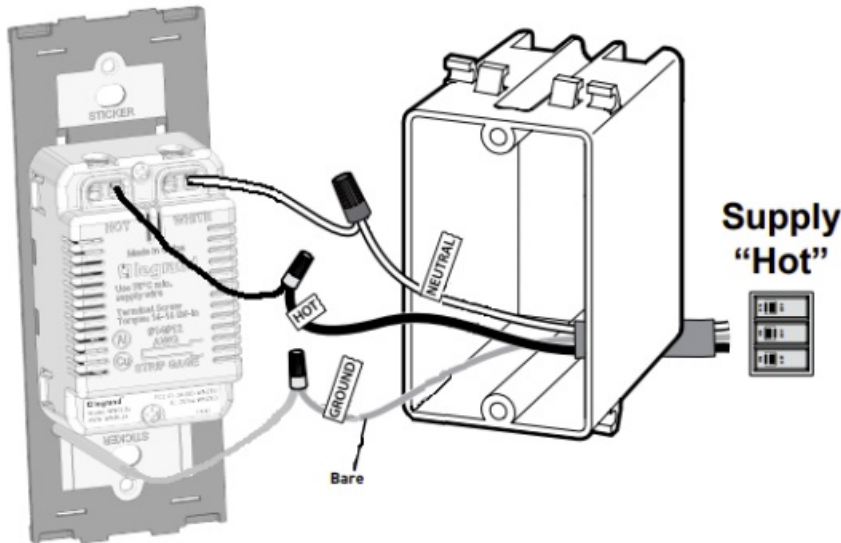
**c. GROUND:** Provides a safe path for electricity in the event of a short circuit

### Wire Smart Scene Controller

- a. Connect the WHITE neutral wire in the box to the Neutral terminal marked "WHITE" using #12 or #14 AWG wire stranded or solid copper conductors. Strip the wire to the length shown on the back of the product. Torque to 14-16 lbf-in.
- b. Connect the BLACK Hot wire in the box to the Hot terminal marked "HOT" using #12 or #14 AWG wire stranded or solid copper conductors. Strip the wire to the length shown on the back of the product. Torque to 14-16 lbf-in.
- c. Connect the GREEN ground wire on the dimmer to the ground wire(s) in the box with the wire nut provided.

### Secure Smart Scene Controller

- a. Fold wires into electrical box, taking care not to pinch a wire.
- b. Use included screws to secure smart dimmer to electrical box.
- c. Snap on the radiant wall plate.
- d. If installing in multi-gang application, break off the tab at the top and bottom of the strap



This device is designed to work with a radiant® Smart Gateway with ZigBee. Follow the instructions from your app to finish setting up your device.

## SETUP

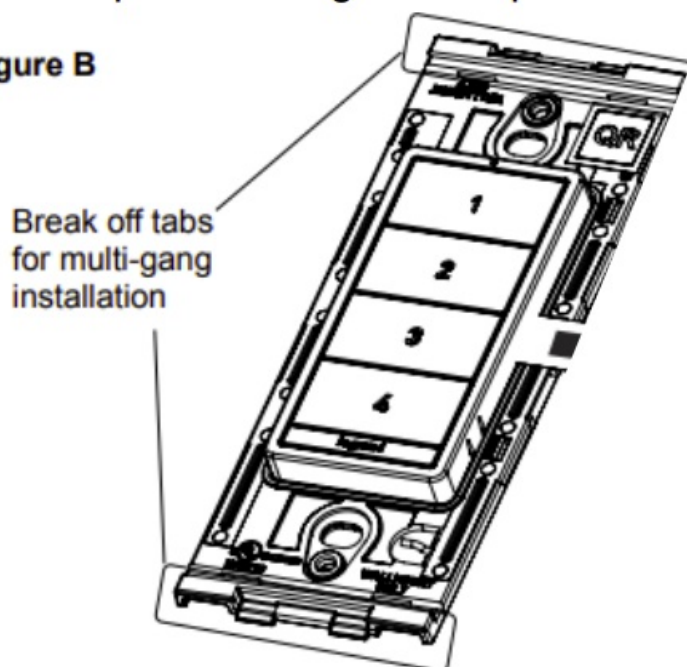
### Set UP Your System

- a. Download and launch the Legrand Home + Control app. The app is available on the App Store or on Google Play.
- b. Connect your smart device to your home network by following the step by step instructions in the app.
- c. Use the app to control your smart device. For the most recent instruction sheets or more information on this product, please see this link or scan the QR code:



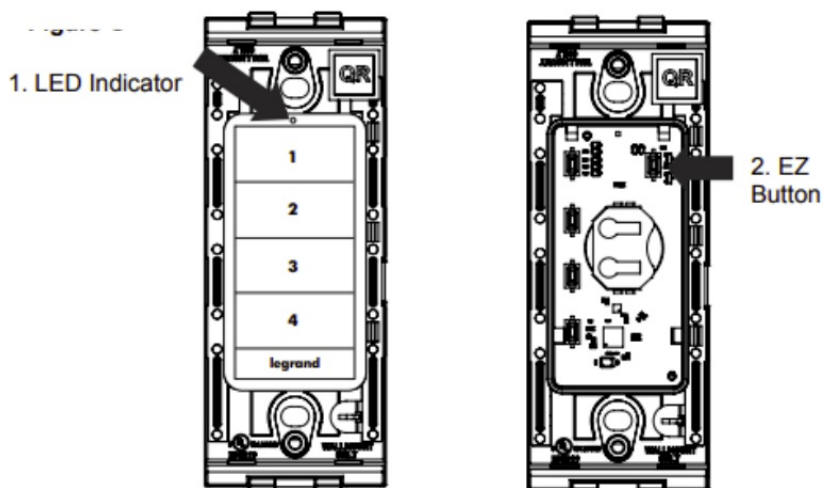
<https://www.legrand.us/p/WZ3RCB46wh>

**Figure B**



## GETTING TO KNOW YOUR SCENE CONTROLLER

Item	Name	Description
1	LED Indicator Light	Indicates the current state of device during setup.
2	EZ Button	Used to reset device



**Reset To Factory Default** Deleting a device from the app will reset it to factory defaults. To manually reset the device to factory defaults press and hold the EZ button for 10 seconds until you see the LED blink red then release. The LED will change to solid red when the reset is complete

## LED Light Explanations

State of Light	Explanation
Blinking Green	Device is attempting to connect to the network

Legrand reserves the right to change specifications without notice.



## Documents / Resources



[legrand WZ3RCB46 Wireless AC Smart Scene Controller](#) [pdf] Instruction Manual  
WZ3RCB46 Wireless AC Smart Scene Controller, WZ3RCB46, Wireless AC Smart Scene Controller, AC Smart Scene Controller, Smart Scene Controller, Scene Controller

## References

- [Patents | Legrand](#)
- [Legrand CA | Delivering and Managing Power, Light, and Data](#)
- [Legrand US | Delivering and Managing Power, Light, and Data](#)
- [Patents | Legrand](#)
- [Server Error Page](#)
- [Smart Lighting from the radiant Collection Legrand](#)
- [User Manual](#)

[Manuals+](#), [Privacy Policy](#)

This website is an independent publication and is neither affiliated with nor endorsed by any of the trademark owners. The "Bluetooth®" word mark and logos are registered trademarks owned by Bluetooth SIG, Inc. The "Wi-Fi®" word mark and logos are registered trademarks owned by the Wi-Fi Alliance. Any use of these marks on this website does not imply any affiliation with or endorsement.