



legrand WZ3RCB40 Radiant Wireless Smart Scene Controller Instruction Manual

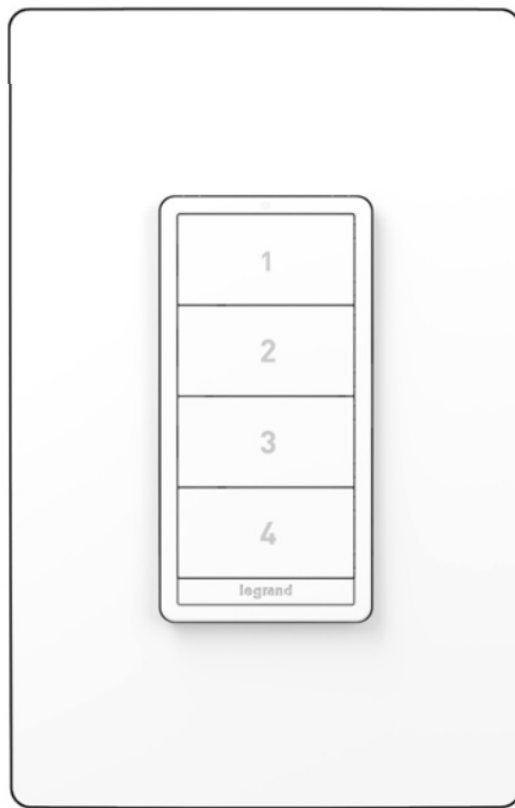
[Home](#) » [Legrand](#) » legrand WZ3RCB40 Radiant Wireless Smart Scene Controller Instruction Manual 

Contents

- [1 Legrand WZ3RCB40 Radiant Wireless Smart Scene Controller](#)
- [2 BEFORE YOU START](#)
- [3 YOU MAY NEED](#)
- [4 INSTALLATION](#)
- [5 SETUP](#)
- [6 GETTING TO KNOW YOUR BATTERY-POWERED DEVICE](#)
- [7 LED Indicator Light Explanations](#)
- [8 LIMITED ONE-YEAR WARRANTY](#)
- [9 REGULATORY INFORMATION](#)
- [10 Documents / Resources](#)
 - [10.1 References](#)
- [11 Related Posts](#)

legrand

Legrand WZ3RCB40 Radiant Wireless Smart Scene Controller



BEFORE YOU START

Review this guide in its entirety. Consult an electrician with any questions or if you are unsure of your abilities.

WARNING: Incorrect installation could result in death, serious injury, and/or damage to your home or devices.

CAUTION: To reduce the risk of injury and/or overheating and damage to other equipment:

- For dry, indoor use only.
- Do not use it to power medical equipment – not suitable as a disconnecting means.

YOU MAY NEED

- Phillips-head screwdriver
- Flat blade screwdriver

You May Also Need:

Voltage tester, pliers, wire cutter, wire stripper, electrical tape, and wire nut.

INSTALLATION

• Choose a place to install the device

This device can be installed on a flat wall surface or in any standard U.S. electrical wall box. It may also be installed over the wall next to a standard U.S. electrical wall box, if used with a multi-gang Legrand radiant wall plate, catalog number beginning with RWP26-XXX.

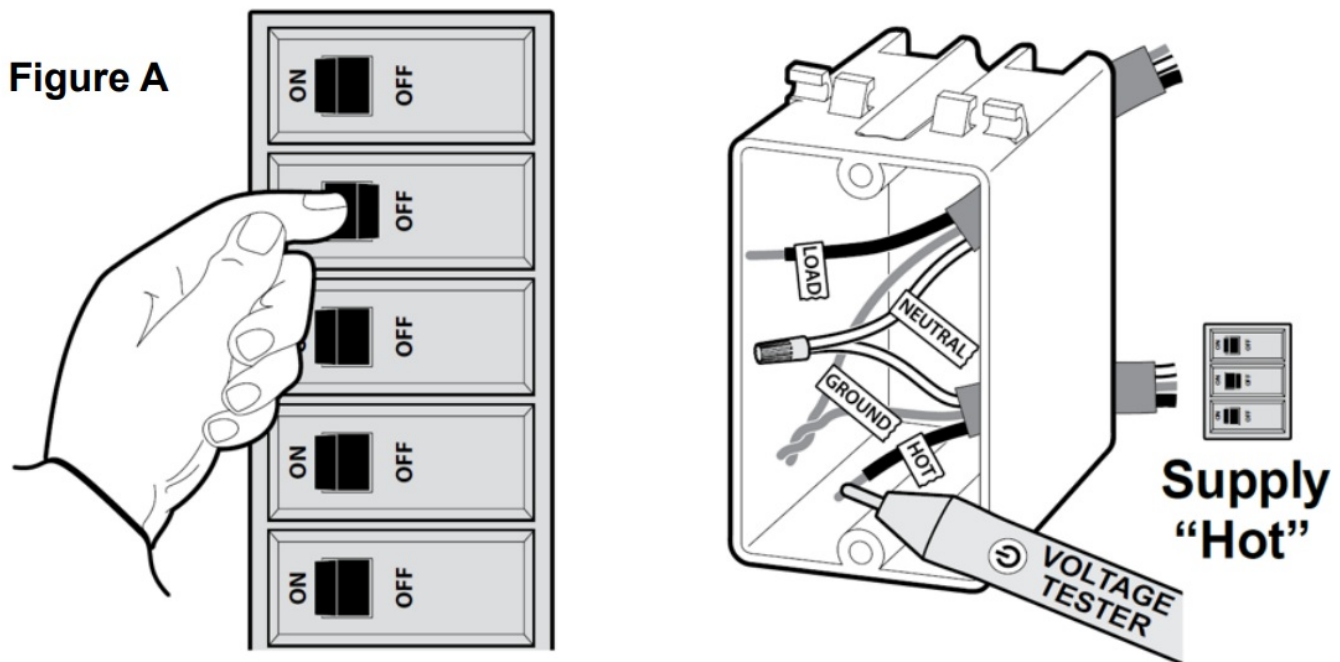
INSTALLATION (on a wall surface)

- Use provided double-sided stickers to install on tiled or other smooth surfaces. Markings on the back of the

device indicate the location of the stickers.

- Use provided mounting screws to install on drywall or uneven surface where the sticker may not work. Do not remove the label or pull out the ground wire as the device may not sit flush.

INSTALLATION (in an electrical box) (See Figure A)



- Turn off power to the box at the circuit breaker.

Note: Ensure power is off to all devices in the electrical box. Remove the old device from the box. Install wire nuts to terminate all the exposed wires that were previously connected to the old device. Ensure complete electrical insulation by securing the wire nuts and making sure no bare wire is exposed.

Install and secure the device

- Fold the wires into the electrical box, taking care not to pinch a wire.
- Remove the label on the back of the device to expose the ground wire and connect it to the box ground.
- Use included mounting screws to secure the device to the electrical box

INSTALLATION (NEXT TO AN ELECTRICAL BOX)

Break off the tabs on the device

Break off the tabs at the top and bottom of the device using pliers as shown in the image (Figure B). Mark the location of the device on the wall surface to the left or right of existing device(s) installed in the electrical box by visually aligning it with an existing device(s).

Install and secure the device

- Fold the wires into the electrical box, taking care not to pinch a wire.
- Use double-sided stickers to install on tiled or any other smooth surface next to the electrical box.
- Use provided mounting screws if the surface next to the electrical box is a dry wall or an uneven surface where the sticker may not work.
- Install the multi-gang subframe using sub-frame screws provided with the radiant wall plate.

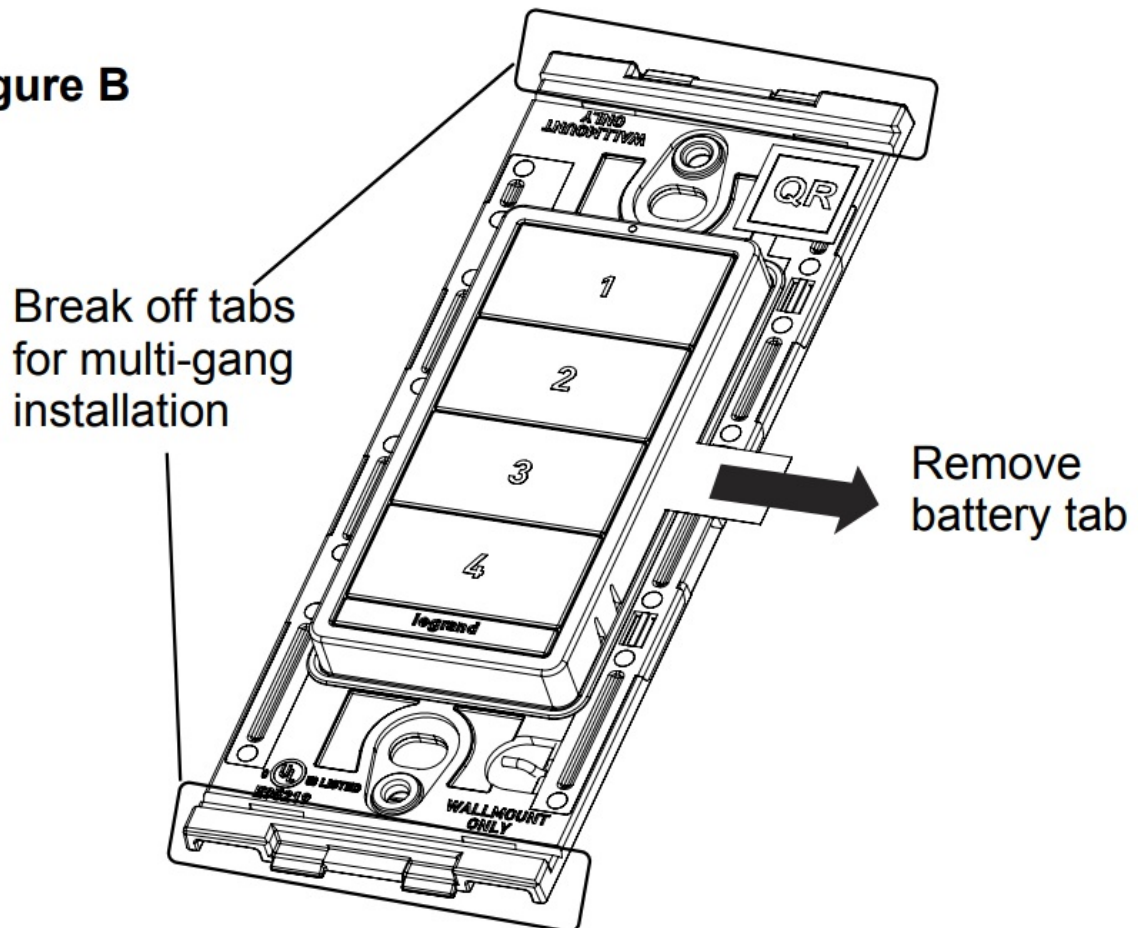
- Snap-on the radiant wall plate

If installing with a non-radiant wall plate, skip steps “d” and “e” above and use screws provided with the other wall plate to secure this device.

SETUP

This device is designed to work with an approved Zigbee Hub. Please see the onboarding instructions for the Zigbee Hub before removing the battery tab. Remove the battery insulation tab as shown in the image (see Figure B).

Figure B



For the most up-to-date information on this product please visit the website at:

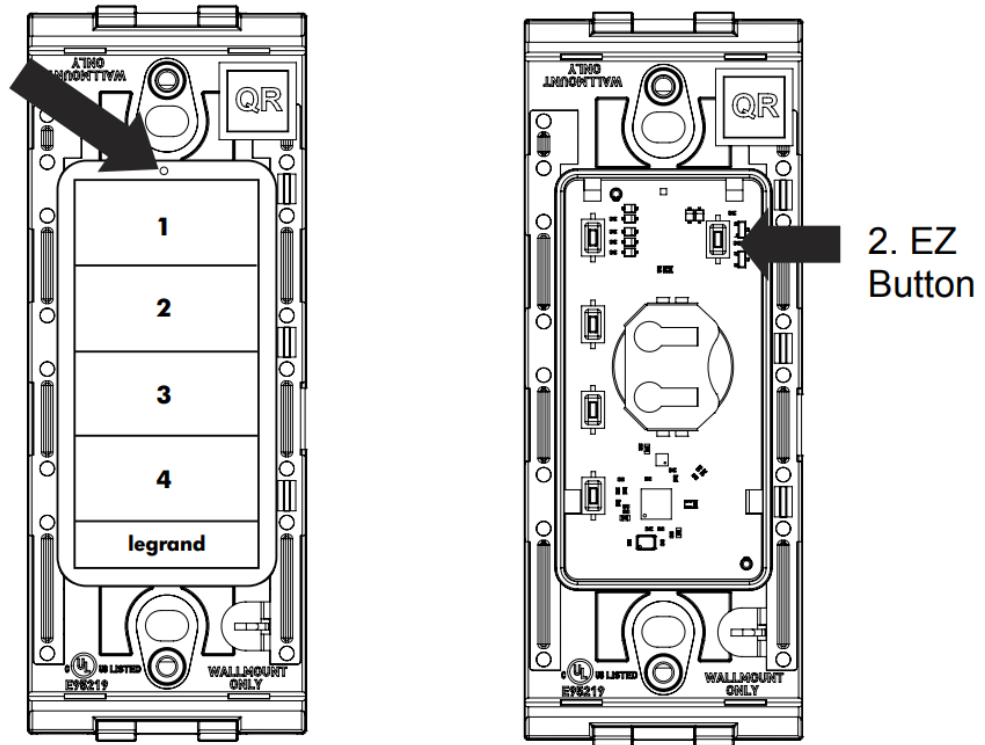
<https://www.legrand.us/markets/hospitality/smart-hospitality>



Item	Name	Description
1	LED Indicator Light	Indicates the current state of the device during setup.
2	EZ Button	Used to reset the device.

LED Indicator

Figure C

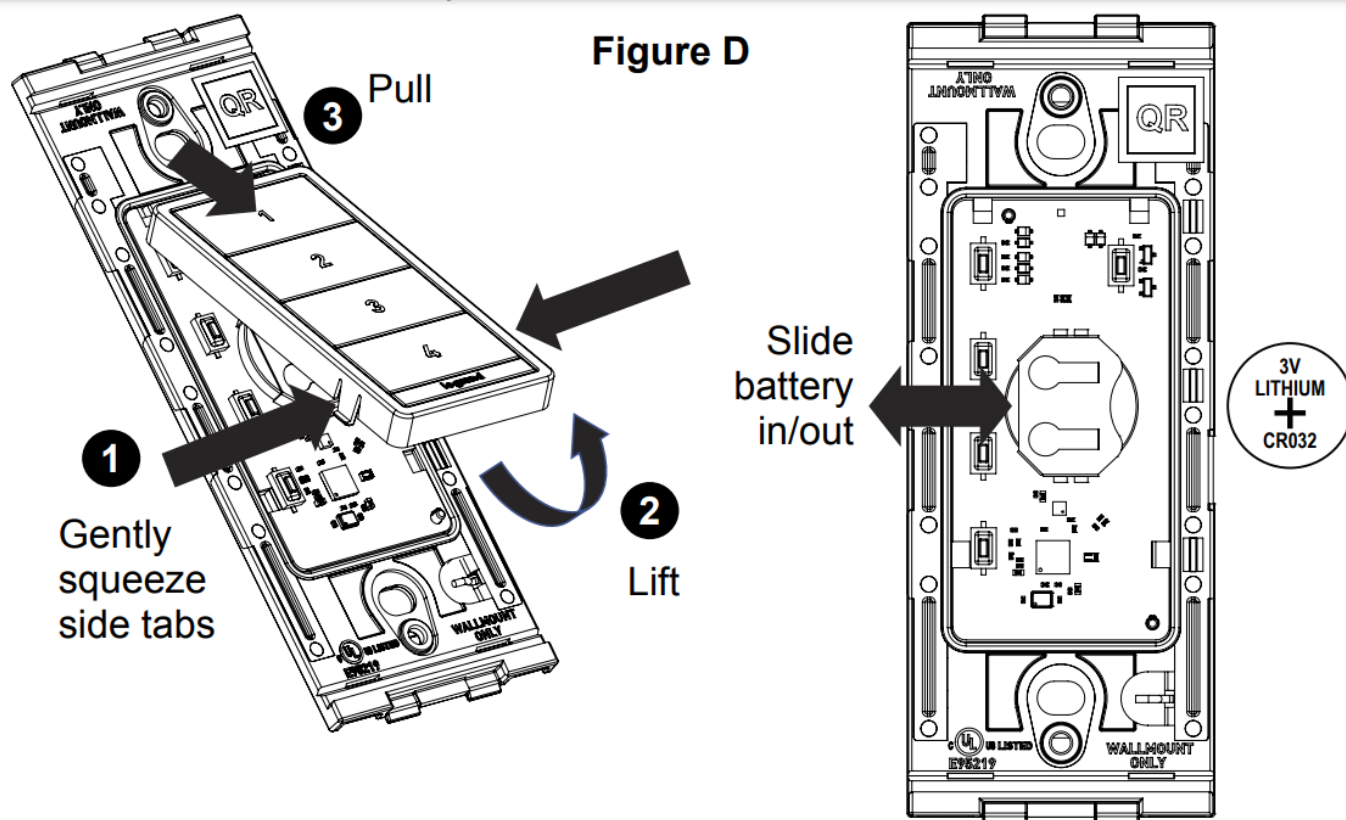


LED Indicator Light Explanations

State of Light	Explanation
Blinking Green	The device is attempting to connect to the network.

Reset To Factory Default (Figure D)

To manually reset the device to factory defaults, press and hold the EZ Button for 10 seconds until you see the LED blink red, then release. The LED will turn off when the reset is complete.



Replace Battery (Figure D)

Replace the battery upon receiving a low battery alert in the Home + Control app. The average battery life is 8 years. To replace, remove the switch cover and slide the battery out. Replace with CR2032 3V battery. Legrand reserves the right to change specifications without notice.

LIMITED ONE-YEAR WARRANTY

Legrand will remedy any defect in workmanship or material in Legrand products that may develop under proper and normal use within one year from the date of purchase by a consumer:

1. by repair or replacement, or, at Legrand's option,
2. by the return of an amount equal to the consumer's purchase price.

Such remedy is OF ANY AND ALL EXPRESSED OR IMPLIED WARRANTIES OF MERCHANTABILITY OR FITNESS FOR A PARTICULAR PURPOSE. Such remedy by Legrand does not include or cover the cost of labor for removal or reinstallation of the product. ALL OTHER FURTHER ELEMENTS OF DAMAGE (INCIDENTAL OR CONSEQUENTIAL DAMAGES) FOR BREACH OF ANY AND ALL EXPRESSED OR IMPLIED WARRANTIES INCLUDING WARRANTIES OF MERCHANTABILITY OR FITNESS FOR A PARTICULAR PURPOSE ARE EXCLUDED HEREBY. (Some states do not allow disclaimers or exclusion or limitation of incidental or consequential damages, so the above disclaimer and limitation or exclusion may not apply to you.) ANY IMPLIED WARRANTIES INCLUDING WHERE REQUIRED WARRANTIES OF MERCHANTABILITY OR FITNESS FOR A PARTICULAR PURPOSE SHALL BE LIMITED TO THE one YEAR PERIOD SET FORTH ABOVE. (Some states do not allow limitations on how long an implied warranty lasts, so the above limitation may not apply to you.) To ensure safety, all repairs to Legrand products must be made by Legrand, or under its specific direction.

The procedure to obtain performance of any warranty obligation is as follows:

1. Contact Legrand, Syracuse, New York 13221, for instructions concerning return or repair;
2. return the product to Legrand, postage paid, with your name and address and a written description of the

installation or use of the Legrand product, and the observed defects or failure to operate, or other claimed basis for dissatisfaction. This warranty gives you specific legal rights and you may also have other rights which vary from state to state.

- For covering patents, see www.legrand.us/patents
- **No: 341365 7/22**
- Copyright 2022 Legrand All Rights Reserved.

Questions? We're here to help.

Phone: 1-877-833-3303 8:00 a.m. to 8:00 p.m. EST (M-F)

Email: smartlighting@legrand.us

Chat: <https://www.legrand.us/radiant/smart-lighting.aspx> (Click on the chat icon to open a dialogue box)

REGULATORY INFORMATION

FCC NOTICE: This device complies with Part 15 of the FCC rules. Operation is subject to the following two conditions:

1. this device may not cause harmful interference, and
2. this device must accept any interference received, including interference that may cause undesirable operation.

This equipment has been tested and found to comply with the limits for a Class B digital device, pursuant to Part 15 of the FCC Rules. These limits are designed to provide reasonable protection against harmful interference in a residential installation. This equipment generates, uses, and can radiate radio frequency energy and, if not installed and used in accordance with the instructions, may cause harmful interference to radio communications. However, there is no guarantee that interference will not occur in a particular installation. If this equipment does cause harmful interference to radio or television reception, which can be determined by turning the equipment off and on, the user is encouraged to try to correct the interference by one or more of the following measures:

- Reorient or relocate the receiving antenna
- Increase the separation between the equipment and receiver
- Connect the equipment into an outlet on a circuit different from that to which the receiver is connected
- Consult the dealer or an experienced radio/TV technician for help

This equipment complies with FCC radiation exposure limits set forth for an uncontrolled environment. This equipment should be installed and operated with a minimum distance of 20 cm between the transmitter's radiating structure(s) and the body of the user or nearby persons. **NOTE:** Any changes or modifications to this device that are not expressly approved by the manufacturer will void the warranty and the user's authority to operate the equipment. Contains **FCC ID:** 2AU5D-WRCB4

IC NOTICE: This device complies with Industry Canada license-exempt RSS standards. Operation is subject to the following two conditions:


1. this device may not cause interference; and
2. this device must accept any interference, including interference that may cause undesired operation of the device.

RF EXPOSURE STATEMENT:




This equipment meets the SAR evaluation limits given in RSS-102 Issue 5 requirements at the minimum separation distance of 20 cm to the human body. **Note:** Any changes or modifications to this device that are not expressly approved by the manufacturer, will void the warranty and the user's authority to operate the equipment.

- **IC:** 25764-WRCB4
- **HVIN:** WZ3RCB4

Documents / Resources

	<p>legrand WZ3RCB40 Radiant Wireless Smart Scene Controller [pdf] Instruction Manual WRCB4, 2AU5D-WRCB4, 2AU5DWRCB4, WZ3RCB40 Radiant Wireless Smart Scene Controller, Radiant Wireless Smart Scene Controller</p>
---	--

References

-  [Patents | Legrand](#)
-  [Smart Hospitality Solutions | Legrand](#)
-  [Smart Lighting from the radiant Collection Legrand](#)