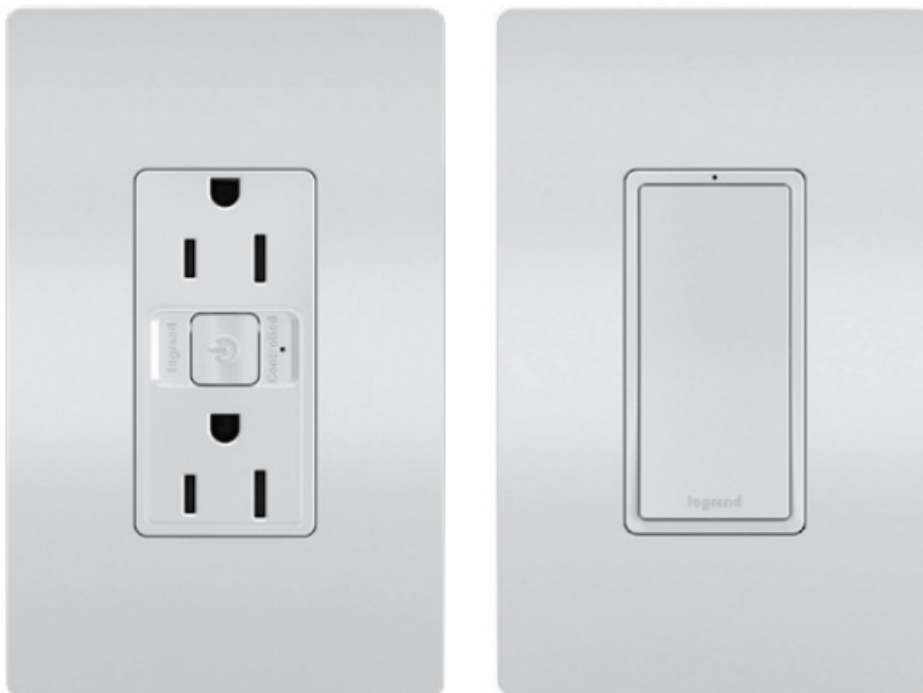




legrand WNREZK15WH Wireless Smart Switch With Netatmo User Manual

[Home](#) » [Legrand](#) » legrand WNREZK15WH Wireless Smart Switch With Netatmo User Manual 

legrand WNREZK15WH Wireless Smart Switch With Netatmo



WNRR15 radiant® Smart 15A Tamper-Resistant Outlet with Netatmo;
Resistive: 125VAC, 60Hz, 15A; Incandescent Halogen, 1000W, Standard + Electronic Ballast: 3.75A; Motor: 1/2
HP WNRL23 radiant® Wireless Smart Switch with Netatmo

Contents

- 1 REGULATORY INFORMATION
- 2 OPTIONAL — APP CONTROL
- 3 WNRR15 OUTLET
- 4 WHAT YOU NEED
- 5 INSTALLATION
- 6 GETTING TO KNOW YOUR OUTLET
- 7 SPECIFICATIONS
- 8 WNRL23 WIRELESS SWITCH
- 9 WHAT YOU NEED
- 10 INSTALLATION
- 11 GETTING TO KNOW YOUR BATTERY POWERED SWITCH
- 12 LIMITED ONE YEAR WARRANTY
- 13 Customer Support
- 14 Documents / Resources
 - 14.1 References
- 15 Related Posts

REGULATORY INFORMATION

FCC NOTICE: This device complies with Part 15 of the FCC rules. Operation is subject to the following two conditions: (1) this device may not cause harmful interference, and (2) this device must accept any interference received, including interference that may cause undesirable operation.

This equipment has been tested and found to comply with the limits for a Class B digital device, pursuant to Part 15 of the FCC Rules. These limits are designed to provide reasonable protection against harmful interference in a residential installation. This equipment generates, uses, and can radiate radio frequency energy and, if not installed and used in accordance with the instructions, may cause harmful interference to radio communications. However, there is no guarantee that interference will not occur in a particular installation.

If this equipment does cause harmful interference to radio or television reception, which can be determined by turning the equipment off and on,

OPTIONAL — APP CONTROL

This kit contains a WNRL10 (wired) and a WNRL23 (battery) device that are paired together at the factory. Additionally, these devices are equipped with enhanced functionality enabled through the Legrand Home+Control app.

Adding app control will result in loss of the factory pairing and will require devices be re-paired using the app. To add app control to this device, you will need to purchase a Legrand Gateway.

For more information, visit [www.legrand.us/add app control](http://www.legrand.us/add-app-control).

WARNING: Do not press the EZ button on devices unless you are adding app control. Pressing the EZ button will undo factory pairing.

WNRR15 OUTLET

BEFORE YOU START

Review this guide in its entirety. Consult an electrician with any questions or if you are unsure of your abilities.

Warning: Incorrect installation could result in death, serious injury, and/or damage to your home or devices.

Caution: To reduce the risk of injury and/or overheating and damage to other equipment:

- For dry, indoor use only.
- Do not use to power medical equipment – not suitable as a disconnecting means.

- Do not use with loads exceeding the device load rating.
- Connect the smart outlet to a 125 VAC, 60 Hz power source ONLY.
- Always use copper wire to install the smart outlet and follow all applicable local and national electrical codes.

WHAT YOU NEED

Required:

- Phillips-head screwdriver
- Flat blade screwdriver

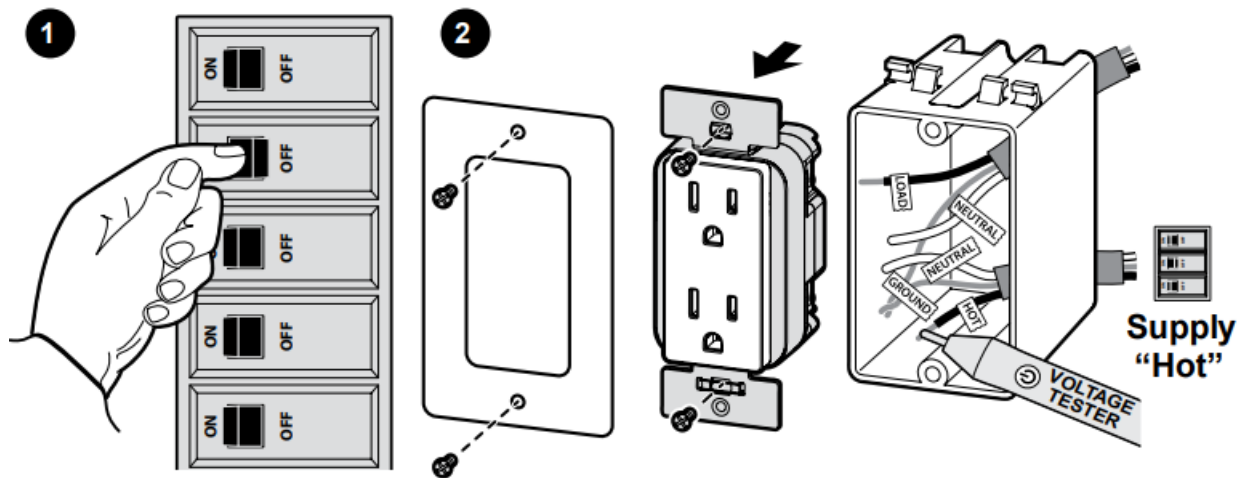
You May Also Need:

Voltage tester, pliers, wire cutter, wire stripper, electrical tape, flashlight, wiring leads (included), and wire nuts (included).

INSTALLATION

1. Turn off power to device at circuit breaker Plug a light or a fan into the outlet and turn it on. Next go the the circuit breaker and turn off the breaker that connects to the outlet. Confirm that power is now out to BOTH outlets.

NOTE: Ensure power is off to all devices in electrical box.



2. Remove existing device

Check for the following wires:

- a. HOT or LINE: Receives power from the circuit box.

Referred to as “HOT” for the purpose of this guide.

Do not touch or let “HOT” wire contact other wires.

The box may contain additional LOAD wire to connect to downstream devices.

- b. NEUTRAL: Creates a path to return current to the power source. The box may contain additional NEUTRAL wire to connect to downstream devices.

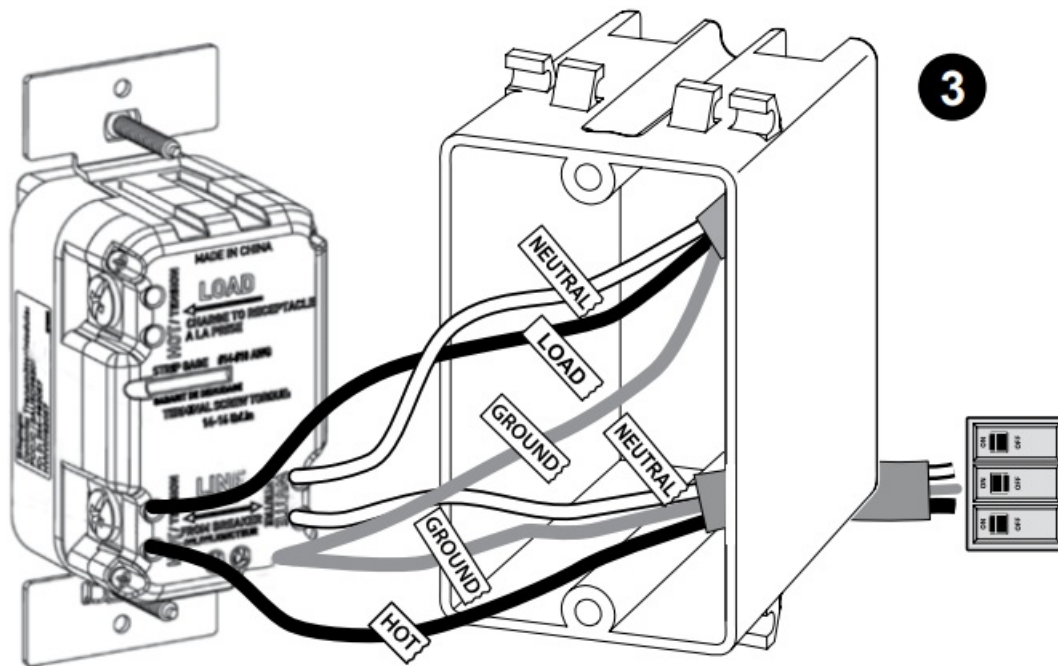
- c. Ground: Provides a safe path for electricity in the event of a short circuit.

3. Wire Smart Outlet

When connecting each wire, loosen the terminal screw, insert the wire into terminal slot, and tighten the terminal screw until the wire is secured.

- a. Connect the WHITE neutral wire(s) in the box to the Neutral Terminal on the device.

- b. Connect the HOT wire(s) in the box to the LINE HOT terminal on the device.
 - c. Connect the ground wire from the box to the Ground terminal on the side of the device.
- The grounding terminal screw is Green in color.

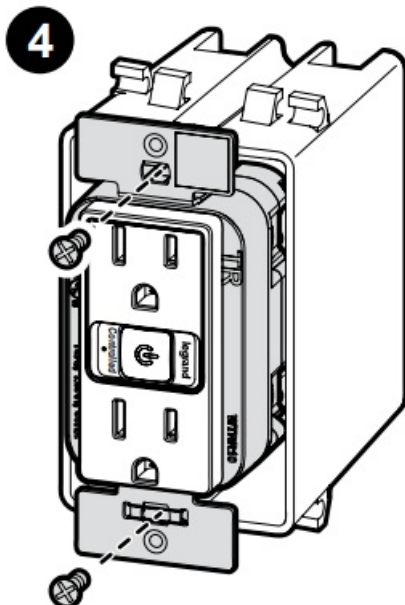


4. Secure Smart Outlet

- a. Fold the wires into electrical box, taking care not to pinch a wire.
- b. Use included screws to secure smart outlet to electrical box.

Do not fully tighten the screws.

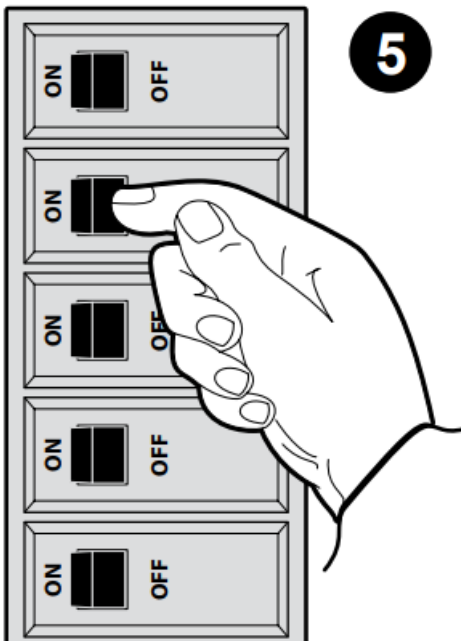
OPTIONAL: This outlet can be optionally wired to control downstream outlets. Then add figure/diagram 3b to show wiring for downstream control.



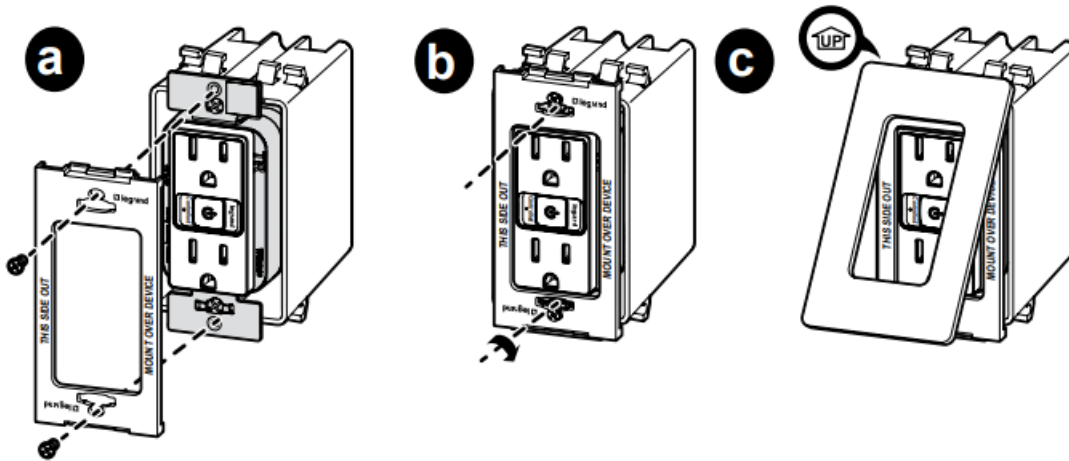
5. Test The Smart Outlet

NOTE: See getting to know your outlet section for feature details.

- a. Turn the power back on at the circuit breaker, press button on outlet to turn controlled outlet on/off.
- b. Plug a lamp or device into the controlled outlet (make sure lamp/device is on).
- c. Press the on/off button to turn the smart outlet on. Your lamp or device should power on.
- d. Press the on/off button to turn the smart outlet off. Your lamp or device should power off.



TROUBLESHOOTING TIP: If the device is not powering, visit www.legrand.us/radiant/smart-lighting/ support for support.



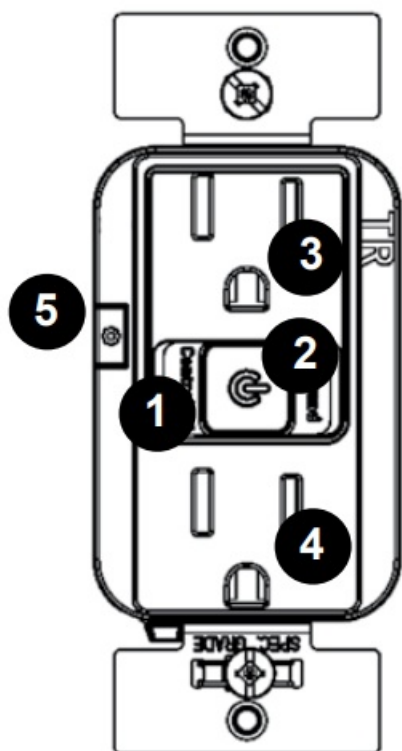
6. Attach Wall Plate

- Use the sub-plate screws (provided) to secure the sub-plate to the smart outlet.
- Tighten device screws to secure to the electrical box.
- Angle the UP end of the wall plate over the top edge of the sub-plate. Push the screwless wall plate down and in until it “snaps” into place over the sub-plate.

NOTE: To remove the wall plate, place the tip of a flat blade screwdriver into the slot under the wall plate and twist gently.

GETTING TO KNOW YOUR OUTLET

Item	Name	Description
1	Indicator Light	For use when integrating optional App Control
2	On/Off Button	Turns the controlled outlet on or off.
3	Controlled Outlet	Outlet controlled by On/Off button and wireless switch
4	Uncontrolled Outlet	“Always on” outlet.
5	EZ Button	Used to factory reset (CAUTION: PRESSING THIS BUTTON WILL UNPAIR THE BATTERY DEVICE FROM THIS DEVICE AND THE BATTERY DEVICE WILL NO LONGER CONTROL THIS OUTLET).



SPECIFICATIONS

Load	Ratings
Resistive	125 VAC, 60 Hz, 15A
Incandescent/Halogen	1000W
Standard/Electronic Ballast	3.75A
Motor	1/2 HP

For most recent instruction sheets or more information on WNR15, please see this link or scan the QR code:



www.legrand.us/p/wnrezk15wh

WNRL23 WIRELESS SWITCH

BEFORE YOU START

Review this guide in its entirety. Consult an electrician with any questions or if you are unsure of your abilities.

WARNING: Incorrect installation could result in death, serious injury, and/or damage to your home or devices.

CAUTION: To reduce the risk of injury and/or overheating and damage to other equipment:

- For dry, indoor use only.
- Do not use to power medical equipment – not suitable as a disconnecting means.

WHAT YOU NEED

Required:

- Phillips-head screwdriver
- Flat blade screwdriver

You May Also Need:

Voltage tester, pliers, wire cutter, wire stripper, electrical tape, and wire nut.

INSTALLATION

1. Choose a place to install device (A, B, or C below) This device can be installed on a flat wall surface or in any standard U.S. electrical wall box. It may also be installed over the wall next to a standard U.S. electrical wall box, if used with a multi-gang Legrand radiant wall plate, catalog number beginning with RWP26-XXX.

This device **MUST BE INSTALLED WITHIN 30 FEET** of WNRR15 Outlet.

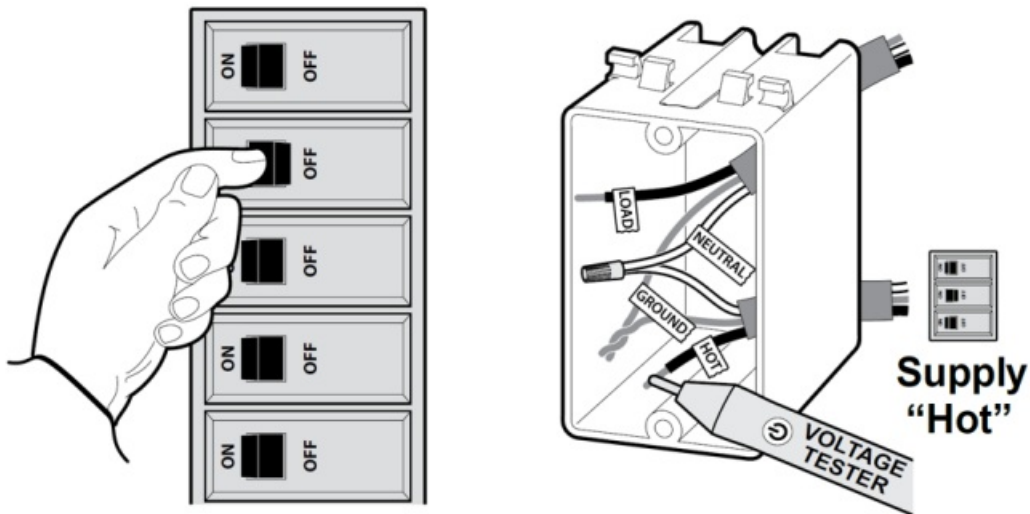
A) INSTALLATION (on a wall surface)

2. Use provided double sided stickers to install on a tiled or other smooth surface. Markings on the back of the device indicate location for the stickers.
3. Use provided mounting screws to install on dry wall or uneven surface where the sticker may not work. Do not remove label or pull out ground wire as device may not sit flush.

B) INSTALLATION (in an electrical box)

4. Turn off power to the box at circuit breaker.

Note: Ensure power is off to all devices in the electrical box. Remove old device from box. Install wire nuts to terminate all the exposed wires that were previously connected to the old device. Ensure complete electrical insulation by securing the wire nuts making sure no bare wire is exposed.



5. Install and secure the device

- a. Fold the wires into the electrical box, taking care not to pinch a wire.
- b. Remove label on back of the device to expose ground wire and connect it to the box ground.
- c. Use included mounting screws to secure the device to the electrical box.

C) INSTALLATION (next to an electrical box)

6. Break off the tabs on device

Break off the tabs at the top and bottom of the device using pliers as shown in image.

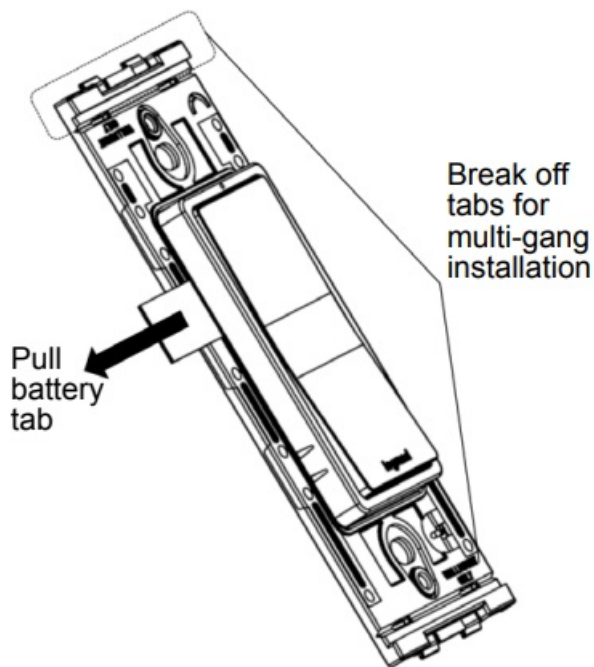
Mark the location of the device on the wall surface to the left or right of existing device(s) installed in the electrical box by visually aligning it with existing device(s)

7. Install and secure the device

- a. Use double sided stickers to install on tiled or any other smooth surface next to the electrical box.
- b. Use provided mounting screws if the surface next the electrical box is dry wall or uneven surface where the sticker may not work.

8. Attach Wall Plate

- a. Install the multi-gang subframe using sub-frame screws provided with the radiant wall plate.



b. Snap-on the radiant wall plate.

If installing with a non-radiant wall plate, skip steps 4a and 4b above and use screws provided with the other wall plate to secure this device.

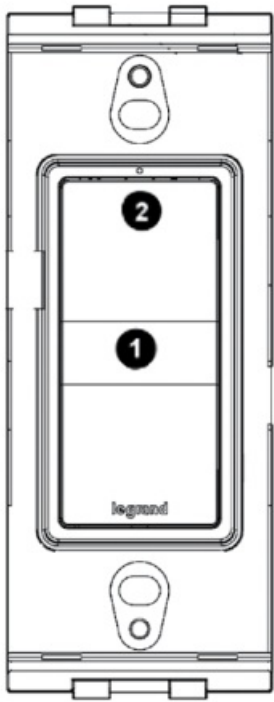
For the most recent instruction sheets or more information on this product, please see this link or scan the QR code:



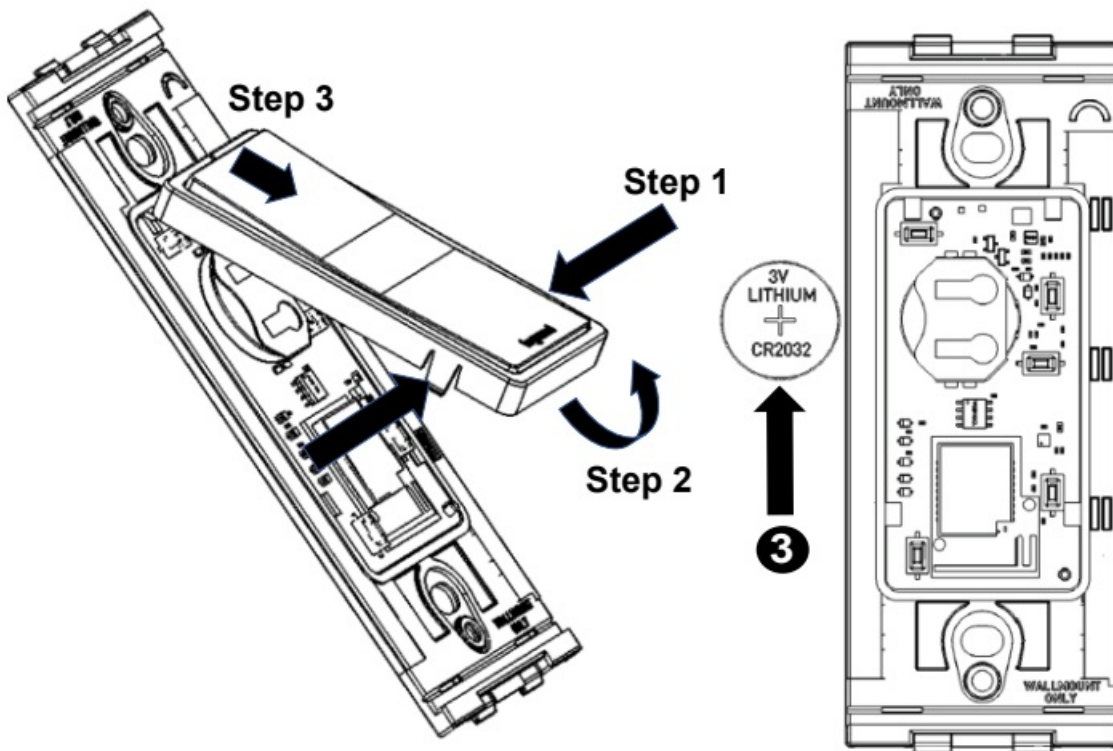
www.legrand.us/p/wnrezk15wh

GETTING TO KNOW YOUR BATTERY POWERED SWITCH

Item	Name	Description
1	Paddle Switch	Press the top of the paddle to turn outlet on and bottom of the paddle to turn outlet off.
2	LED Indicator Light	Low battery – LED will flash red once when paddle is pressed indicating low battery
3	Battery	Lithium ion CR2032



Remove Switch Cover



LIMITED ONE YEAR WARRANTY

Legrand will remedy any defect in workmanship or material in Legrand products which may develop under proper and normal use within ONE year from date of purchase by a consumer:

(1) by repair or replacement, or, at Legrand's option, (2) by return of an amount equal to consumer's purchase price. Such remedy is IN LIEU OF ANY AND ALL EXPRESSED OR IMPLIED WARRANTIES OF MERCHANTABILITY OR FITNESS FOR A PARTICULAR PURPOSE. Such remedy by Legrand does not include or cover cost of labor for removal or reinstallation of the product. ALL OTHER FURTHER ELEMENTS OF DAMAGE (INCIDENTAL OR CONSEQUENTIAL DAMAGES) FOR BREACH OF ANY AND ALL EXPRESSED OR IMPLIED WARRANTIES INCLUDING WARRANTIES OF MERCHANTABILITY OR FITNESS FOR A PARTICULAR PURPOSE ARE EXCLUDED HEREBY. (Some states do not allow disclaimers or exclusion or

limitation of incidental or consequential damages, so the above disclaimer and limitation or exclusion may not apply to you.) ANY IMPLIED WARRANTIES INCLUDING WHERE REQUIRED WARRANTIES OF MERCHANTABILITY OR FITNESS FOR A PARTICULAR PURPOSE SHALL BE LIMITED TO THE ONE YEAR PERIOD SET FORTH ABOVE. (Some states do not allow limitations on how long an implied warranty lasts, so the above limitation may not apply to you.)

To ensure safety, all repairs to Legrand products must be made by Legrand, or under its specific direction. Procedure to obtain performance of any warranty obligation is as follows: (1) Contact Legrand, Syracuse, New York 13221, for instructions concerning return or repair; (2) return the product to Legrand, postage paid, with your name and address and a written description of the installation or use of the Legrand product, and the observed defects or failure to operate, or other claimed basis for dissatisfaction. This warranty gives you specific legal rights and you may also have other rights which vary from state to state.

For covering patents, see www.legrand.us/patents

Questions? We're here to help.

Phone: 1-877-833-3303 8:00 a.m. to 8:00 p.m. EST (M-F)

Email: smartlighting@legrand.us

Chat: <https://www.legrand.us/radiant/smart-lighting.aspx>

(Click on the chat icon to open a dialogue box)

Customer Support

800.223.4185
1.877.BY.LEGRAND
www.legrand.us
www.legrand.ca



Documents / Resources

	<p>legrand WNREZK15WH Wireless Smart Switch With Netatmo [pdf] User Manual WNREZK15WH Wireless Smart Switch With Netatmo, WNREZK15WH, Wireless Smart Switch With Netatmo, Smart Switch With Netatmo, Switch With Netatmo, With Netatmo</p>
---	--

References

- [!\[\]\(a22ba4e13c745edbf29e51af246c4c12_img.jpg\) Adding App Control with the radiant Easy Kits | Legrand](#)
- [!\[\]\(33b18af9a4b997eb52666cfeb3c44157_img.jpg\) radiant Easy Switched Outlet Kit | Legrand](#)
- [!\[\]\(262b158440b847a82f89a14cab8644ec_img.jpg\) The radiant Collection by Legrand](#)
- [!\[\]\(f51929fecf7b0dc947ac13f4c4835e8f_img.jpg\) Smart Lighting from the radiant Collection Legrand](#)
- [!\[\]\(dfbf0e54bcca114319aa65c906feb8d0_img.jpg\) Smart Lighting from the radiant Collection Legrand](#)

Manuals+.