



## legrand WNAL33/43 Wireless Smart Scene Controller Switches with Netatmo Instruction Manual

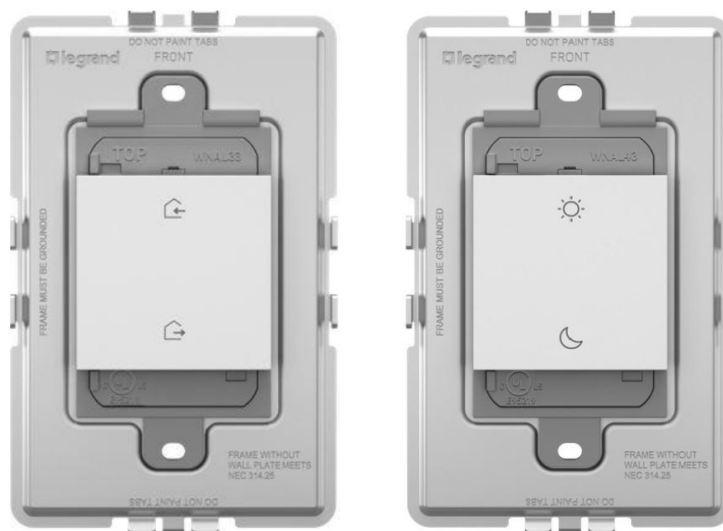
[Home](#) » [Legrand](#) » legrand WNAL33/43 Wireless Smart Scene Controller Switches with Netatmo Instruction Manual 



**No: 341335 – 05/21adorne™**  
**WNAL33/43 Wireless Smart Scene Controller Switches with Netatmo**  
**Installation Instructions**

**Catalog Number(s)**

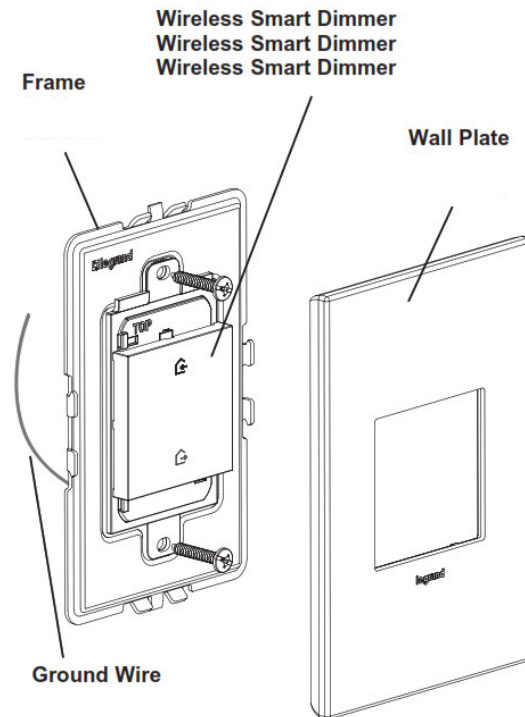
**Country of Origin: Made in China**



**Wireless Smart Scene**  
**Controller Switches**

WNAL33 Home/Away  
WNAL33 Home/Away  
WNAL33 Home/Away  
WNAL43 Wake/Sleep  
WNAL43 Wake/Sleep  
WNAL43 Wake/Sleep

Wallplate sold separately



## Contents

- [1 REGULATORY INFORMATION](#)
- [2 Set Up Your System](#)
- [3 Documents / Resources](#)
- [4 Related Posts](#)

## REGULATORY INFORMATION

FCC NOTICE: This device complies with Part 15 of the FCC rules. Operation is subject to the following two conditions: (1) this device may not cause harmful interference, and (2) this device must accept any interference received, including interference that may cause undesirable operation. This equipment has been tested and found to comply with

the limits for a Class B digital device, pursuant to Part 15 of the FCC Rules. These limits are designed to provide reasonable protection against harmful interference in a residential installation. This equipment generates, uses, and can radiate radio frequency energy and, if not installed and used in accordance with the instructions, may cause harmful interference to radio communications. However, there is no guarantee that interference will not occur in a particular installation. If this equipment does cause harmful interference to radio or television reception, which can be determined by turning the equipment off and on, the user is encouraged to try to correct the interference by one or more of the following measures:

- Reorient or relocate the receiving antenna
- Increase the separation between the equipment and receiver

- Connect the equipment into an outlet on a circuit different from that to which the receiver is connected
- Consult the dealer or an experienced radio/TV technician for help. This equipment complies with FCC radiation exposure limits set forth for an uncontrolled environment.

This equipment should be installed and operated with a minimum distance of 90 mm between the transmitter's radiating structure(s) and the body of the user or nearby persons. **NOTE:** Any changes or modifications to this device that are not expressly approved by the manufacturer will void the warranty and the user's authority to operate the equipment. Contains FCC ID: 2AU5D-AHAW5

**IC NOTICE:** This device complies with Industry Canada license-exempt RSS standards. Operation is subject to the following two conditions: (1) this device may not cause interference; and (2) this device must accept any interference, including interference that may cause undesired operation of the device.

**RF EXPOSURE STATEMENT:** This equipment meets the SAR evaluation limits given in RSS-102 Issue 5 requirements at the minimum separation distance of 90 mm to the human body.

**Note:** Any changes or modifications to this device that are not expressly approved by the manufacturer, will void the warranty and the user's authority to operate the equipment.

IC: 25764-AHAW5 HVIN: WNAL33, WNAL43

**For more information and helpful how-to videos, visit [www.adornemyhome.com/install](http://www.adornemyhome.com/install).**

## **INSTALLATION INSTRUCTIONS**

Please read these instructions completely before you begin. This adorne™ dimmer is designed to for installation in standard electrical boxes. However, some of the installation methods vary slightly from traditional methods. If you do not understand these instructions or are unsure of your abilities, seek the assistance of a qualified electrician. Use only with Legrand Adorne TM system.

### **1 Choose a place to install the Device**

For indoor installation only. This device can be installed in any standard electrical wall box of any gang size, or on any flat wall surface.

**NOTE: Skip section 2, if installing in an electrical box.**

#### **Wall Surface Installation**

Use provided double-sided stickers to install on a tiled or another smooth surface. Markings on the back of the device indicate the location of the stickers. If the wall surface is uneven or rough where the adhesive may not work, use drywall screws if going on a wall stud or drywall anchor if the stud is not present.

**NOTE: Skip section 2, if installing in an electrical box.**

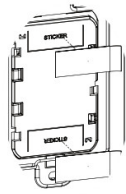
#### **Wall Surface Installation**

Use provided double-sided stickers to install on a tiled or another smooth surface. Markings on the back of the device indicate the location of the stickers. If the wall surface is uneven or rough where the adhesive may not work, use drywall screws if going on a wall stud or drywall anchor if the stud is not present.

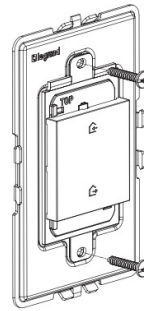
**NOTE: Skip section 2, if installing in an electrical box.**

#### **Wall Surface Installation**

Use provided double-sided stickers to install on a tiled or another smooth surface. Markings on the back of the device indicate the location of the stickers. If the wall surface is uneven or rough where the adhesive may not work, use drywall screws if going on a wall stud or drywall anchor if the stud is not present.



Using Adhesive  
Utilisation d'adhésif  
Uso de adhesivo



Using Screws  
Utilisation de vis  
Uso de tornillos

**Adhesive mounting is not the recommended mounting method utilizing real materials, cast metal or Hubbardton Forge® Wall Plates**



#### **WARNING**

To prevent severe shock or electrocution, always disconnect power at the service panel before beginning work.



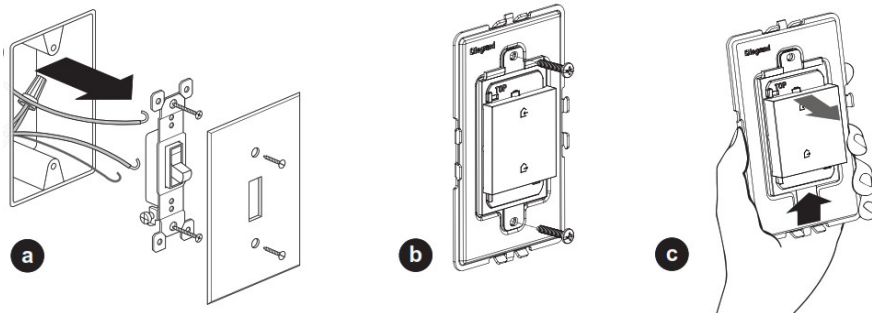
#### **WARNING**

Failure to connect the ground wire will result in an unsafe installation that could lead to personal injury.

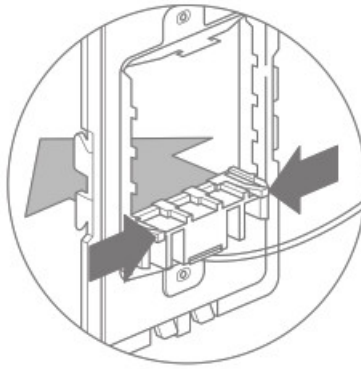
**Note:** Skip Section 3, if installing on a wall surface.

### **Electrical box installation**

Remove the grounding wire label from the back of the device to access the ground wire. Connect it to box ground using provided end cap. If installing this device with soap smart dimmer with Netatmo, WNAL50 or other wired Netatmo devices, follow their instructions on how to terminate the spare wires in the box. Mount device to wall box with screws provided. Tighten screws just enough to hold the frame in place. Do NOT overtighten.

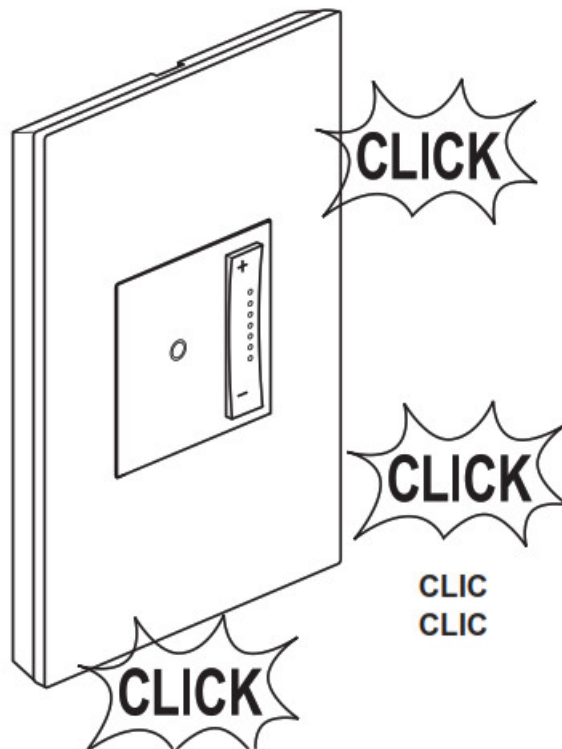


In case of multi-gang installation, replace the provided frame with adorne™ multi-gang frame. While holding the frame with one hand, push the device up slightly until it snaps out and then pull it out of the frame. Secure the device to the multi-gang frame using frame mounting screws.



#### **Remove spacers from the frame.**

Since this dimmer fills the frame completely, you will not need the spacers. From the back of the frame, pinch the tabs on the spacer to release.

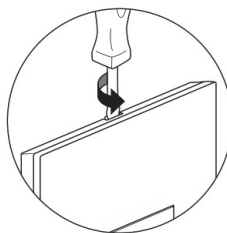


#### **Snap wall plate to frame.**

There are three click-stops to adjust the fit of the wall plate to the dimmer and the wall.

**NOTE: To remove the wall plate, insert a small, flat screwdriver in notches on the wall plate and twist gently to pry from the frame.**

Never apply cleaner directly to the dimmer or wall plate. Apply to a soft cloth and use a cloth to remove any smudges from the product. Remove the battery insulation tab before starting the setup.



## **Set Up Your System**

Remove the battery insulation tab before starting the setup.

- Download and launch the Legrand Home + Control app. The app is available on the App Store or on Google Play.
- Connect your smart device to your home network by following the step-by-step instructions in the app.
- Use the app to control your smart device.

## Getting to Know Your Battery Powered Switch

Item Article Article ulo	Name Nom Nombre	Description
1	LED Indicator Light Voyant DEL LED Indicator Light	Indicates the current state of device during setup
2	EZ Button Bouton EZ	Used to initiate the setup
3	Battery	CR2032 3V battery -Replaceable

## LED Indicator Light Explanations

State of Light	Explanation
Blinking Green Clignotant vert Verde parpadeando	The device is attempting to connect to the network.

## Reset to Factory Default

Deleting a device from the app will reset it to factory defaults.

To manually reset the device to factory defaults press and hold the EZ button for 15 seconds until you see the LED blink green and red then release. The LED will turn off when the reset is complete.

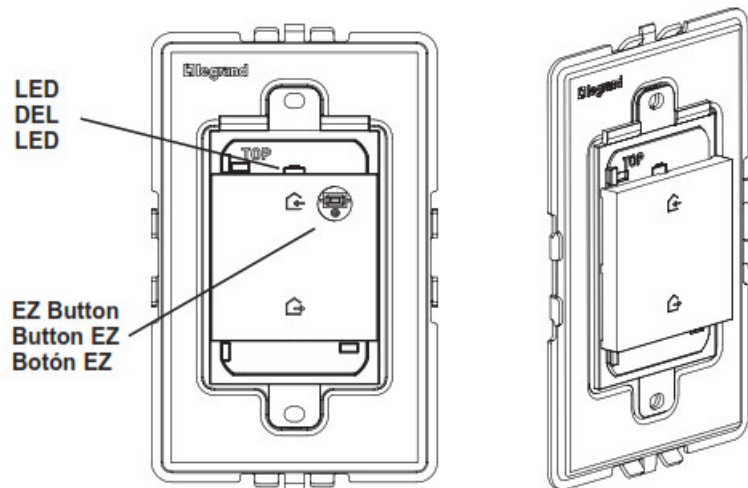
Due to ongoing product improvements, Legrand reserves the right to change specifications without notice. For the most recent instruction sheets or more information on this product, please see this link or scan the QR code:

<https://www.legrand.us/p/wnal33w1> <https://www.legrand.us/p/wnal43w1>



<https://www.legrand.us/p/wnal33w1>

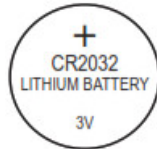




Due to ongoing product improvements, Legrand reserves the right to change specifications

### Battery Replacement

The device includes a CR2032 battery. To replace the battery, remove the cover as shown.



Technical Assistance: (877) 295-3472

[www.adornemyhome.com/install](http://www.adornemyhome.com/install)

LIMITED TWO-YEAR WARRANTY

Limited two-year warranty information for adorne™ products is available at [www.legrand.us/adorne/warranty](http://www.legrand.us/adorne/warranty). Limited warranty information for adorne™ products may also be obtained free of charge by sending a written request, along with your proof of purchase (including purchase date), to:

Legrand

Attn: adorne Customer Service/Warranty Department

50 Boyd Avenue Syracuse, NY 13209

No: 341335 – 05/21

© Copyright 2021 Legrand All Rights Reserved.

60 Woodlawn Street

West Hartford, CT 06110

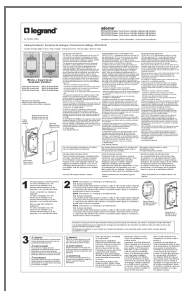
1.877.BY.LEGRAND (295.3472)

[www.legrand.us](http://www.legrand.us)

CANADA 905.738.9195

[www.legrand.ca](http://www.legrand.ca)

### Documents / Resources



[legrand WNAL33/43 Wireless Smart Scene Controller Switches with Netatmo](#) [pdf] Instruction Manual

AHAWS, 2AU5D-AHAWS, 2AU5DAHAWS, WNAL33-43, Wireless Smart Scene Controller Switches with Netatmo

