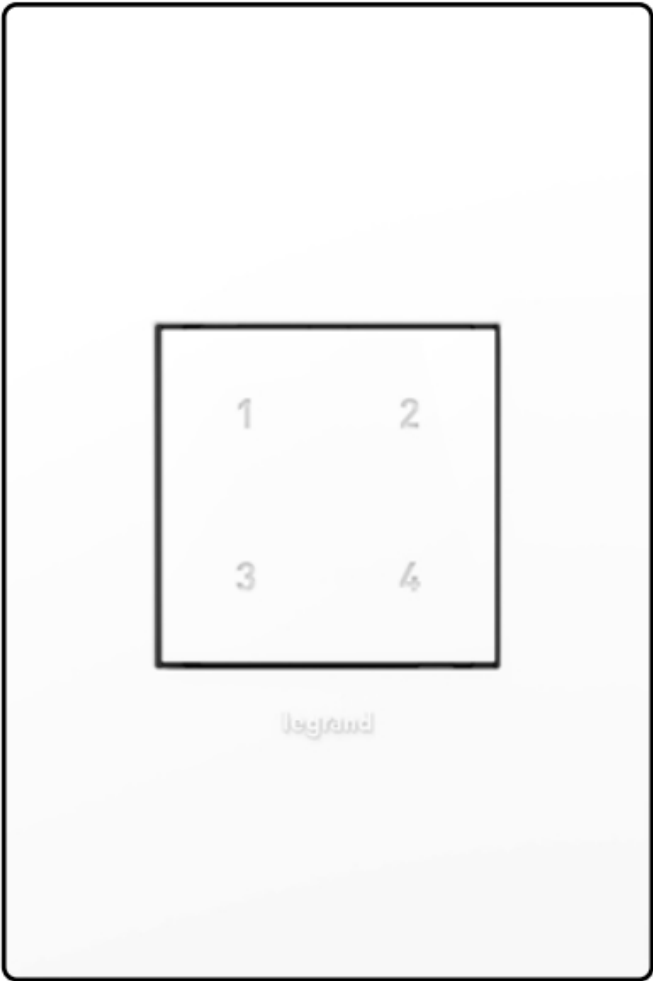




legrand WNACB40 Wireless Smart Scene Controller with Netatmo Instruction Manual

[Home](#) » [Legrand](#) » legrand WNACB40 Wireless Smart Scene Controller with Netatmo Instruction Manual 

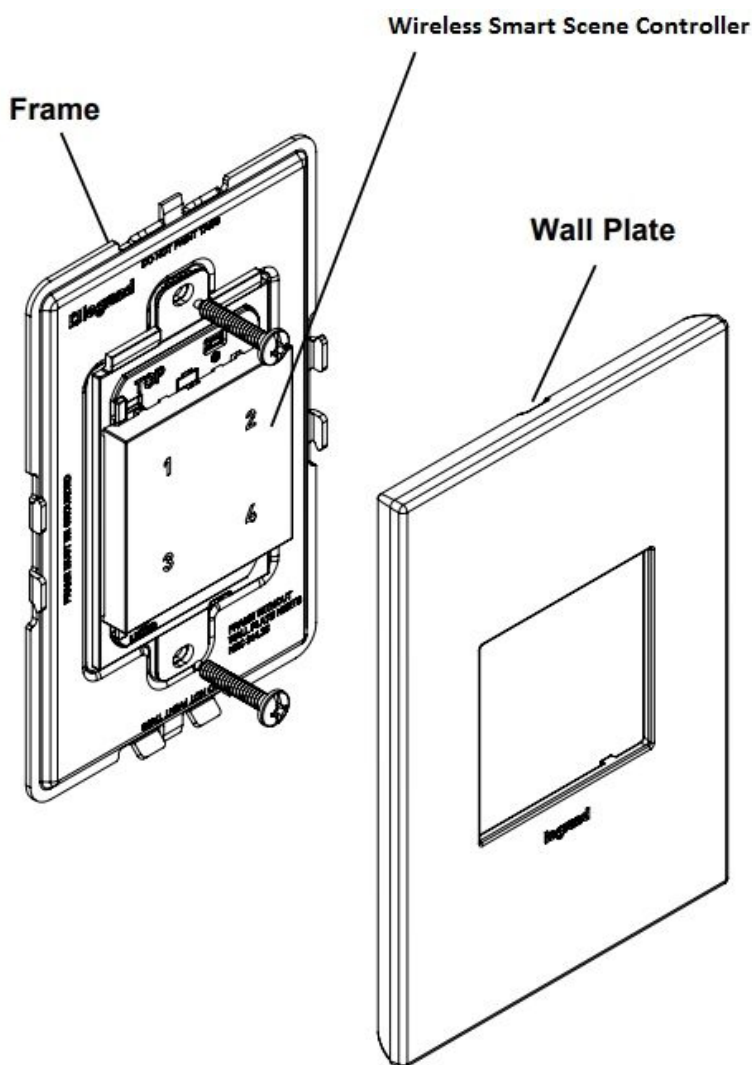
legrand WNACB40 Wireless Smart Scene Controller with Netatmo Instruction Manual



Contents

- 1 Product Overview
- 2 INSTALLATION INSTRUCTIONS
 - 2.1 Getting to Know Your Battery Powered Device
 - 2.2 Snap wall plate to frame.
- 3 Technical Assistance
- 4 Contact Us
- 5 Documents / Resources
 - 5.1 References
- 6 Related Posts

Product Overview



INSTALLATION INSTRUCTIONS

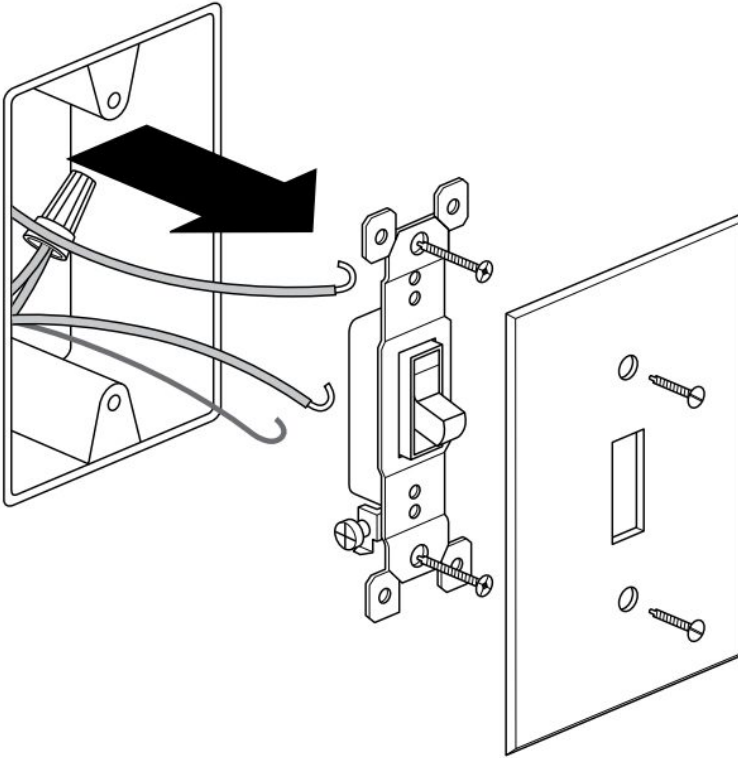
Please read these instructions completely before you begin. This adorne® wireless smart scene remote is designed for installation in standard electrical boxes or directly on a wall surface. However, some of the installation methods vary slightly from traditional methods. If you do not understand these instructions or are unsure of your abilities, seek the assistance of a qualified electrician.

Use only with Legrand adorne® system

1. Choose a place to install the Device

For indoor installation only. This device can be installed in any standard electrical wall box of any gang size, or on any flat wall surface.

WARNING To prevent severe shock or electrocution, always disconnect power at the service panel before beginning work.



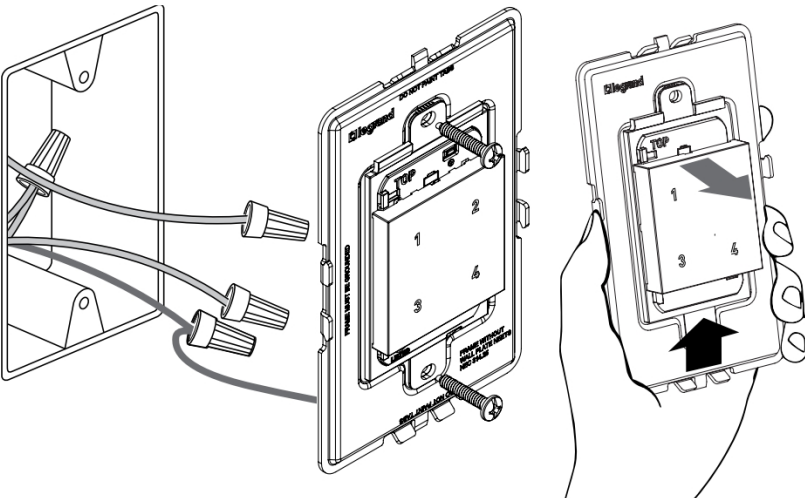
2. One-Gang Electrical Box Installation

Note: Skip Section 2, if installing on a wall surface. **Electrical box installation**

Remove the grounding wire label from back of device to access the ground wire. Connect it to box ground using provided wirenut.

Terminate and cap with wire nuts any other wires in the box.

Mount device to wall box with screws provided. Tighten screws just enough to hold frame in place. Do NOT overtighten.

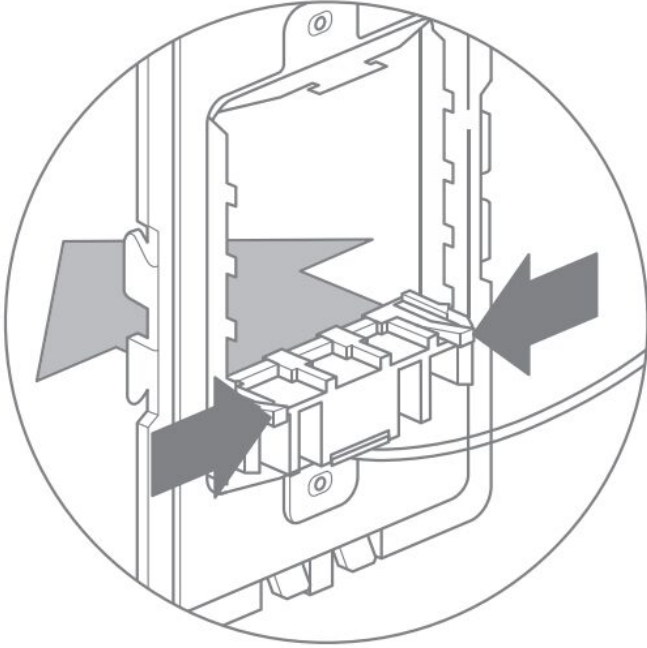


Multi-Gang Electrical Box Installation

NOTE: Skip section 2 if installing on a wall surface. In case of multi-gang installation, replace the provided frame with adorne® multi gang frame. While holding the frame with one hand, push the device up slightly until it snaps out and then pull it out of the frame. Secure the device to the multi gang frame using frame mounting

screws.

Remove spacers from the frame. Since this device fills the frame completely, you will not need the spacers. From the back of the frame, pinch the tabs on the spacer to release

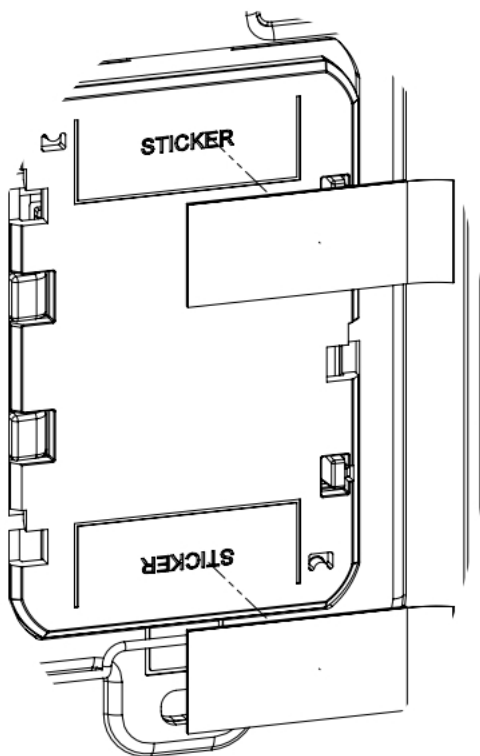


3. Wall Surface Installation

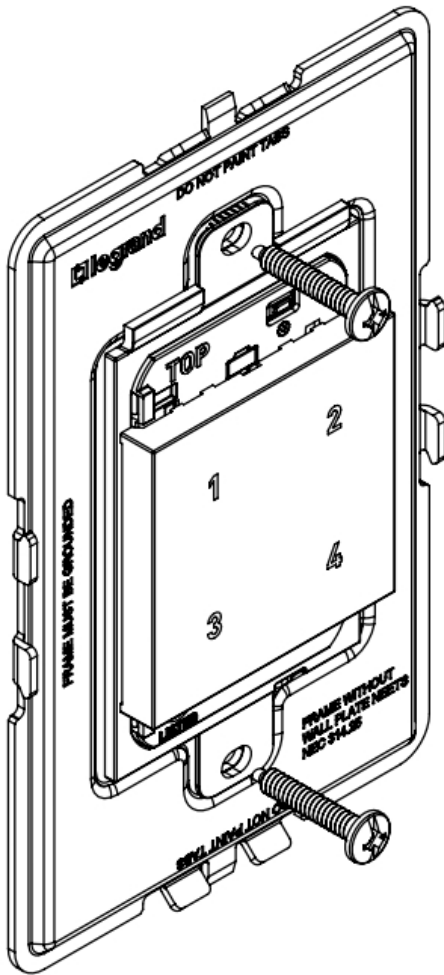
NOTE: See Section 2, if installing in a box.

Use provided double sided stickers to install on a tiled or other smooth surface. Markings on the back of the device indicate location for the stickers. If the wall surface is uneven or rough, where the adhesive may not work, use drywall screws to attach to wall stud. If wall stud is not present, use drywall anchors to secure.

Using Adhesive



Using Screws



4. Set Up Your System (connect to your network)

Download and launch the Legrand Home + Control app. The app is available on the App Store or on Google Play.

Connect your smart device to your home network by following the step by step instructions in the app.

Use the app to control your smart device.

Set Up Your System (if network access is not yet available)

Press the Gateway EZ button for 5 seconds and let go. The LED will turn solid green.

Briefly press one of the buttons on the Scene Controller to activate it. The LED on the screen controller will flash green, then turn off. To complete the installation, briefly press the Gateway EZ button. All LEDs on the products will switch off.

Once Network is available: Download and Open the Legrand Home + Control app. Customize your scenes in the Settings/Scenes section.

Getting to Know Your Battery Powered Device

Item	Name	Description
1	LED Indicator	Indicates the current state of device during setup.
2	EZ Button	Used to setup or reset your device.
3	Battery	CR2032 3V battery -Replaceable.

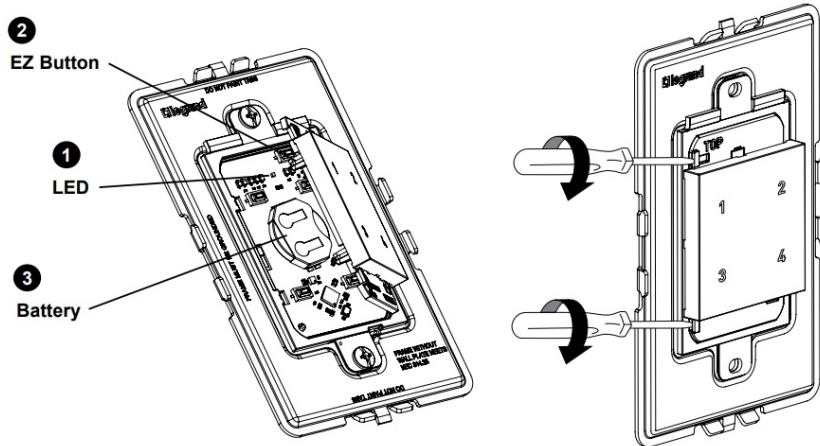
LED Indicator Light Explanations

State of Light: **Explanation**

Blinking Green: Device is attempting to connect to the network.

Reset To Factory Default (Figure D):

To manually reset the device to factory defaults, press and hold the EZ Button for 10 seconds until you see the LED blink red, then release. The LED will turn off when the reset is complete



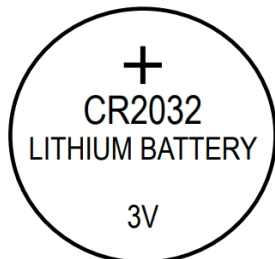
Due to ongoing product improvements, Legrand reserves the right to change specifications without notice. For the most recent instruction sheets or more information on this product, please see this link or scan the QR code:

<https://www.legrand.us/p/wnacb40>



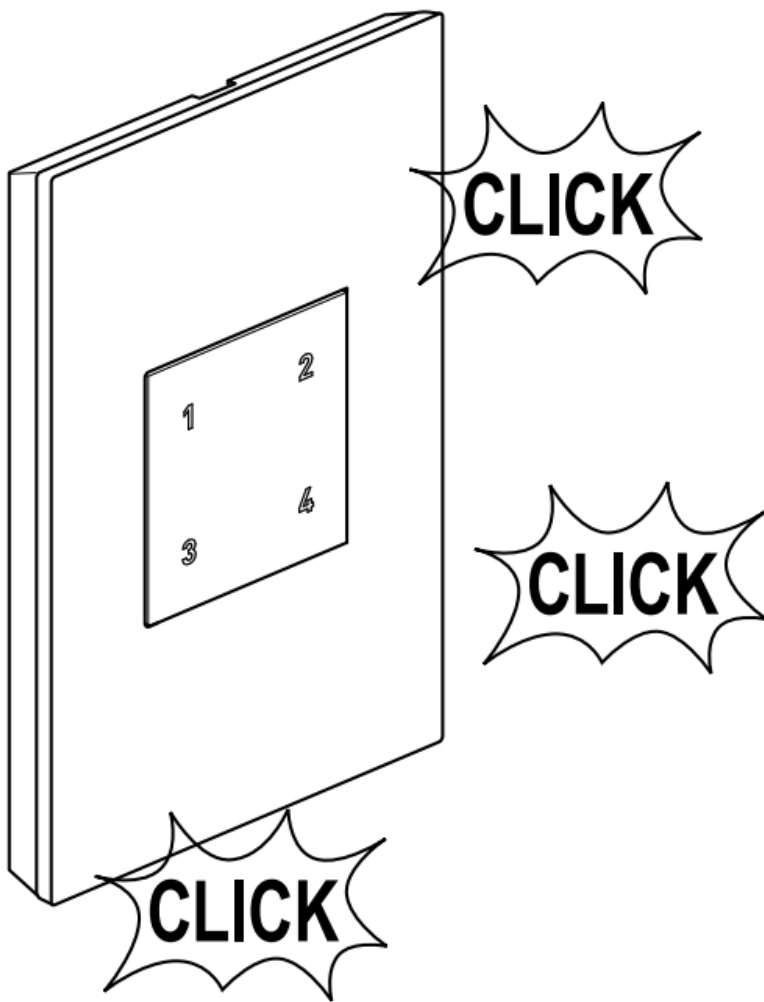
Battery Replacement

The device includes a CR2032 battery. To replace the battery, Remove the cover as shown.



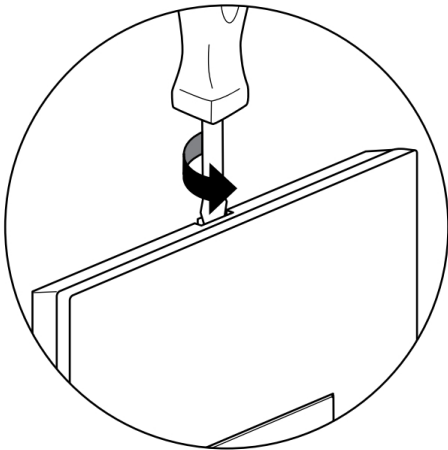
Snap wall plate to frame.

There are three click-stops to adjust the fit of the wall plate to the device and the wall.



NOTE: To remove wall plate, insert a small, flat screwdriver in notches on wall plate and twist gently to pry from frame.

Never apply cleaner directly to the device or wall plate. Apply to a soft cloth and use cloth to remove any smudges from the product.



Technical Assistance

(877) 295-3472

www.adornemyhome.com/install

LIMITED TWO-YEAR WARRANTY

Limited two-year warranty information for adorne® products is available at www.adornemyhome.com/warranty. Limited warranty information for adorne® products may also be obtained free of charge by sending a written request, along with your proof of purchase (including purchase date), to:

Legrand
Attn: adorne Customer Service/Warranty Department
50 Boyd Avenue
Syracuse, NY 13209

Contact Us

© Copyright 2022 Legrand All Rights Reserved.

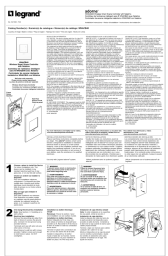
60 Woodlawn Street
West Hartford, CT 06110
1.877.BY.LEGRAND
(295.3472)
www.legrand.us

CANADA

905.738.9195
www.legrand.ca



Documents / Resources

	<p>legrand WNACB40 Wireless Smart Scene Controller with Netatmo [pdf] Instruction Manual WACB4, 2AU5D-WACB4, 2AU5DWACB4, WNACB40 Wireless Smart Scene Controller with Netatmo, WNACB40, Wireless Smart Scene Controller with Netatmo</p>
---	--

References

- [Search Results Page](#)
- [adorne® Warranty Legrand](#)
- [Legrand US | Delivering and Managing Power, Light, and Data](#)
- [The adorne® Collection | Legrand](#)
- [adorne® Warranty Legrand](#)