



legrand TSD703P Toggle Slide Dimmer Instruction Manual

[Home](#) » [Legrand](#) » legrand TSD703P Toggle Slide Dimmer Instruction Manual 

Contents

- [1 legrand TSD703P Toggle Slide Dimmer Instruction Manual](#)
 - [1.1 COLOR CHANGE PROCEDURE](#)
 - [1.2 DIRECTIONS](#)
 - [1.3 INSTALLATION DIAGRAM FOR DIMMERS](#)
 - [1.4 MULTIPLE GANGING OF DIMMERS AND OTHER DEVICES](#)
 - [1.5 WARRANTIES](#)
- [2 Documents / Resources](#)
 - [2.1 References](#)
- [3 Related Posts](#)

legrand TSD703P Toggle Slide Dimmer Instruction Manual



No: 341243 10/19

Toggle Slide Incandescent Dimmers: 700W, 1100W, 120VAC, 60Hz

Installation Instructions

For technical support, call 1-800-223-4185

Catalog Number(s): TSD703P*, TSD1103P* (*denotes color suffix)

Country of Origin: Made in China



TSD703P



TSD1103P

READ AND SAVE THESE INSTRUCTIONS

To be installed by a certified electrician or other qualified person.

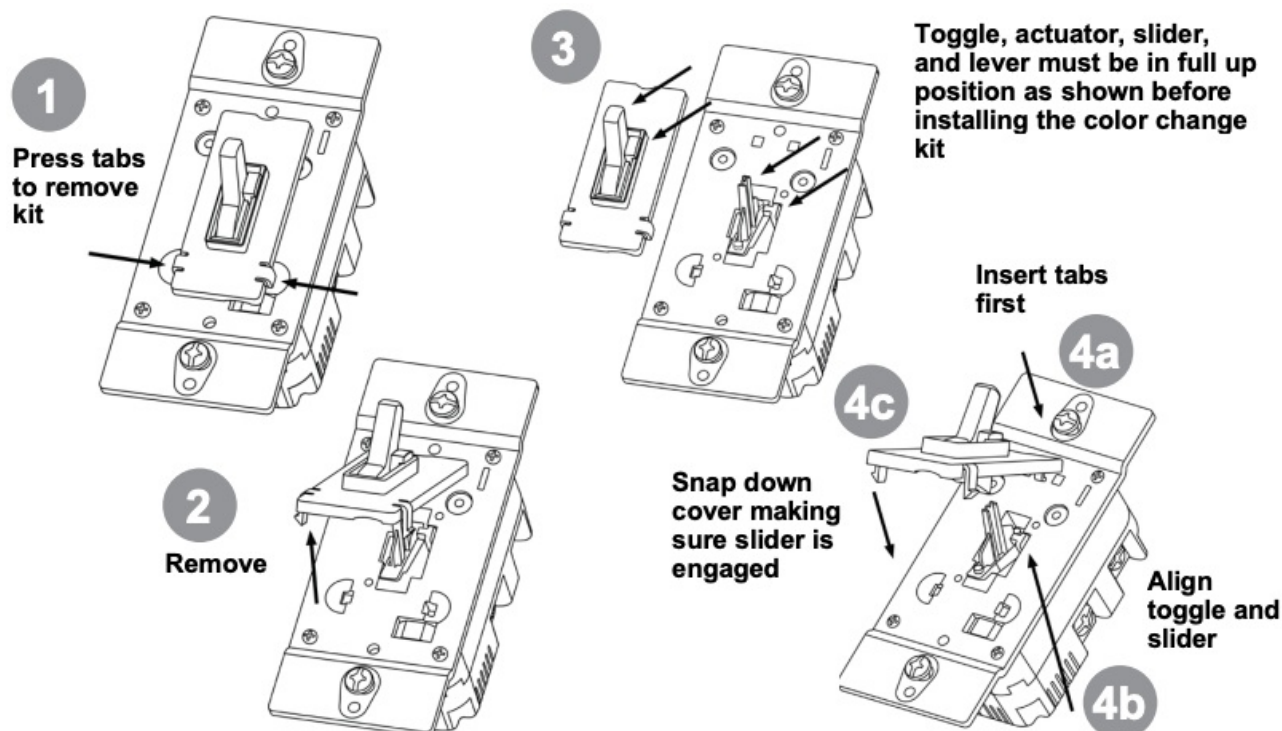
WARNING – To prevent severe shock or electrocution, always turn power off at the service panel before installing this unit, working on the circuit, or changing a lamp.

CAUTION – To reduce the risk of overheating and possible damage to other equipment, do not install incandescent dimmer to control a receptacle, a fluorescent light or bulb, a motor-operated appliance, or a transformer-supplied appliance.

- Do not use dimmer with incandescent lamps whose power requirements exceeds maximum power (stated in Watts) of the dimmer.
- Do not connect dimmer to power source other than 120VAC, 60 Hz only.
- A 50W minimum load is required.
- Use copper wire only

INSTRUCTIONS

COLOR CHANGE PROCEDURE



DIRECTIONS

1. If a color change kit was provided, and a different color is desired, see the Color Change Procedure, if not proceed to step #2.
2. Disconnect power to circuit at the panel by removing fuse or turn circuit breakers OFF before installing.
3. Remove wall plate and switch mounting screws, pull existing switch from wall box.
4. Disconnect existing switch from circuit. 3-Way Installation: Identify the "COMMON" wire (wire connected to the terminal marked common or odd colored terminal). For "new" installation identify wire connected to power source or to the load.
5. Connect dimmer as shown in the installation diagram using #12 or #14 AWG stranded or solid copper conductors. Strip wire using gauge on back of device (Figure 1). Torque terminal screws to 14-16 inch lbs.

INSTALLATION DIAGRAM FOR DIMMERS

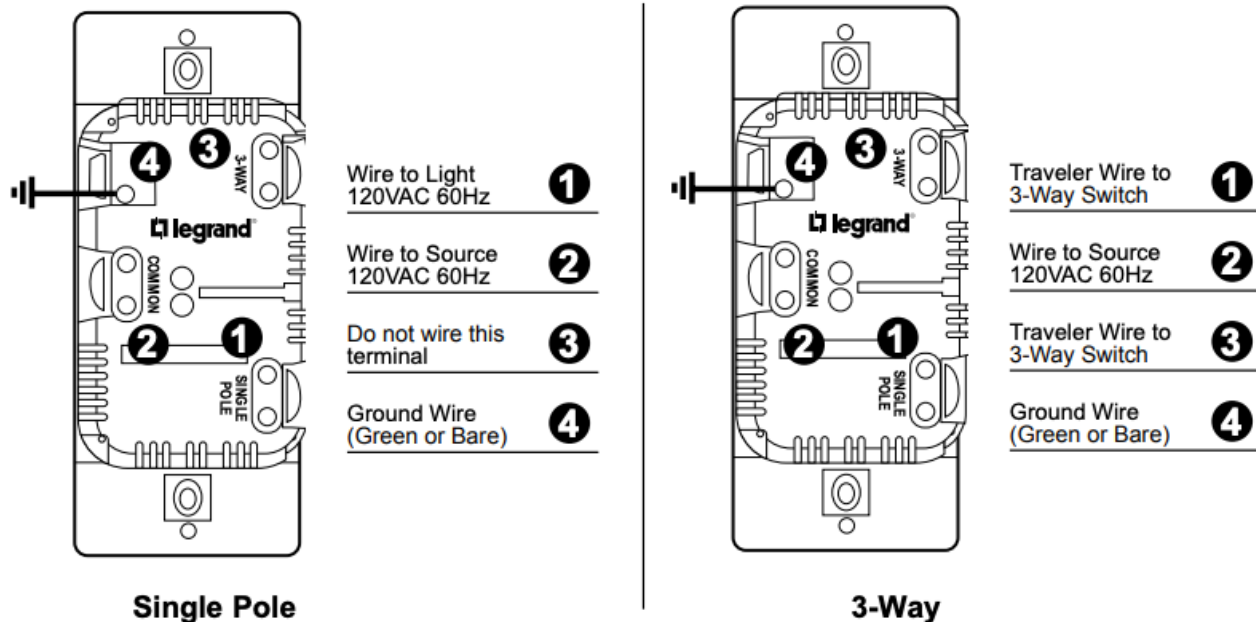
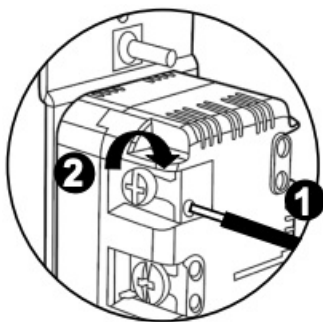


Figure 1

Screw Pressure Plate Back Wire



1. Insert wire to bottom of hole.
2. Torque terminal screws to 14-16 inch lbs.

Termination takes #12 or #14 AWG stranded or solid, copper conductors.

6. Install dimmer in wall box, with word 'TOP' on the strap right side up, using mounting screws provided.
7. Attach wall plate and restore power to circuit.

NOTE: It is normal for the dimmer to feel warm during operation. Use a separate neutral wire for each phase of a multiphase system containing a dimmer, and for high power single phase applications where flickering is present.

MULTIPLE GANGING OF DIMMERS AND OTHER DEVICES

Any combination of dimmer models and other devices may be ganged together. Break off tabs are provided on the 1100W dimmer straps for multi-gang applications. Pry off the tabs using pliers before installation, as shown in figure 2. De-rate the maximum load according to the following table:

Dimmer Catalog #	Maximum Load	Multi-Gang Derating	
		2 Gang Installation	3 Gang Installation
TSD1103P	1100 W	900 W	800 W

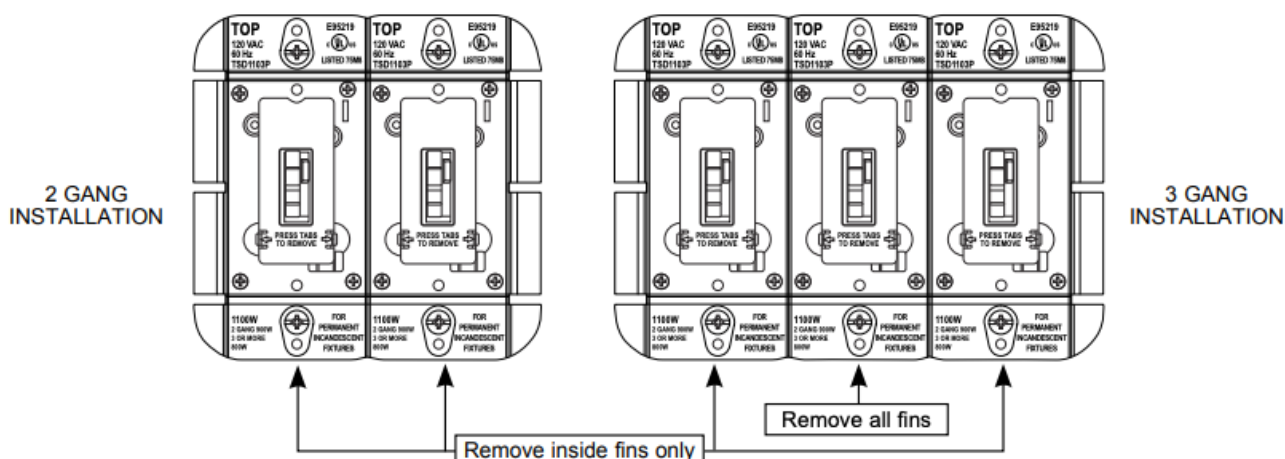


Figure 2

WARRANTIES

Lifetime Warranty. The device you have purchased is warranted under normal use against defects in workmanship and materials for as long as you own the device. If the device fails due to manufacturing defect during normal use, return the device for replacement to the store where purchased or send to: Pass & Seymour Legrand / 50 Boyd Avenue / Syracuse, NY 13209

All requests for replacement must include a dated sales receipt (legible copies acceptable).

ALL OTHER WARRANTIES, INCLUDING BUT NOT LIMITED TO ANY WARRANTIES OF MERCHANTABILITY OR FITNESS FOR A PARTICULAR PURPOSE, ARE LIMITED TO A PERIOD OF TWO YEARS FROM THE DATE OF PURCHASE. YOUR SOLE AND EXCLUSIVE REMEDY AGAINST PASS & SEYMOUR LEGRAND UNDER ANY WARRANTY SHALL BE THE EQUIVALENT REPLACEMENT OF THE DEVICE. IN NO EVENT SHALL ANY WARRANTY APPLY TO ANY DEFECT ARISING OUT OF ANY ALTERATION OF THE DEVICE, IMPROPER WIRING, IMPROPER INSTALLATION, MISUSE, ABNORMAL USE OR NEGLIGENCE. IN NO EVENT SHALL PASS & SEYMOUR LEGRAND BE LIABLE FOR LOST PROFITS, INDIRECT, SPECIAL, EXEMPLARY, INCIDENTAL OR CONSEQUENTIAL DAMAGES. Some states do not allow limitations on how long implied warranties last and do not allow exclusion or limitation of incidental or consequential damages. Some of the above limitations or exclusions may not apply to every purchaser.

For covering patents, see www.legrand.us/patents

No: 341243 10/19

© Copyright 2019 Legrand All Rights Reserved.

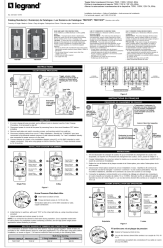


1.877.BY.LEGRAND

www.legrand.us

www.legrand.ca

Documents / Resources

	<p>legrand TSD703P Toggle Slide Dimmer [pdf] Instruction Manual TSD703P Toggle Slide Dimmer, TSD703P, Toggle Slide Dimmer, Slide Dimmer</p>
---	---

References

- [LI Patents | Legrand](#)
- [User Manual](#)

[Manuals+](#), [Privacy Policy](#)

This website is an independent publication and is neither affiliated with nor endorsed by any of the trademark owners. The "Bluetooth®" word mark and logos are registered trademarks owned by Bluetooth SIG, Inc. The "Wi-Fi®" word mark and logos are registered trademarks owned by the Wi-Fi Alliance. Any use of these marks on this website does not imply any affiliation with or endorsement.