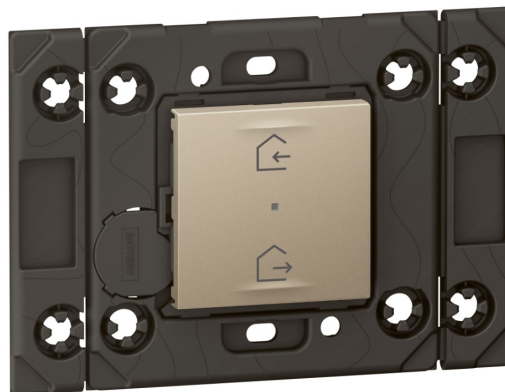


## legrand LE13229AA Netatmo Connected Starter Pack Installation Guide

[Home](#) » [Legrand](#) » legrand LE13229AA Netatmo Connected Starter Pack Installation Guide 

### legrand LE13229AA Netatmo Connected Starter Pack Installation Guide



This product is a connected accessory which requires you to buy and install the Arteor with Netatmo connected starter pack and socket outlets, switches and/or connected lighting micromodules first.

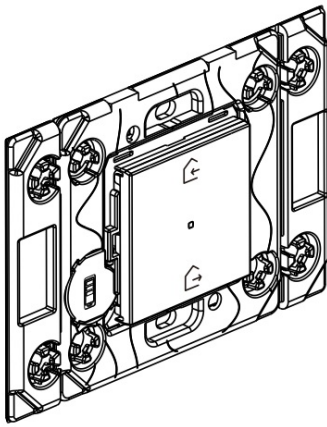


This product only controls Arteor with Netatmo switches, lighting micromodules and connected socket outlets.

#### Contents

- [1 Pack contents](#)
- [2 Replacing the battery](#)
- [3 Documents / Resources](#)
- [4 Related Posts](#)

#### Pack contents



Leaving home/Coming home wireless control

**Frequency bands:** 2.4 – 24835 GHz

**Power level:** < 100 mW.

### Installing the leaving home/coming home wireless control

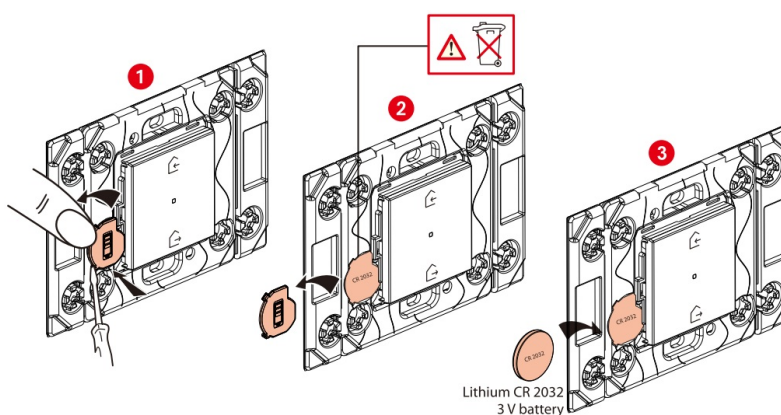
To add the leaving home/coming home wireless control to your connected installation, you should follow the instructions:

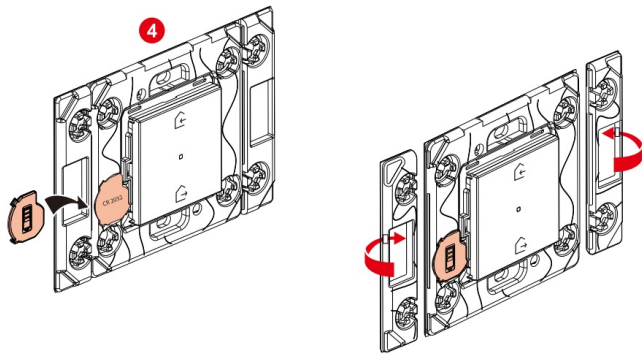
- in the user guide in your connected starter pack
- in the Legrand Home + Control application (Settings/Add a new product section)
- or consult the user manual on [legrand.com](http://legrand.com)

**[www.legrand.com](http://www.legrand.com) reference/574655**

LEGRAND – Pro and Consumer Service – BP 30076  
87002 LIMOGES CEDEX FRANCE – [www.legrand.com](http://www.legrand.com)

### Replacing the battery





The support is breakable for 2 and 3-gang installations.



Please read and keep these instructions – All the safety and operating instructions should be read before this product is operated.

Please refer the information on exterior rear enclosure for electrical and safety information.

The maximum operating temperature is 40°C.

**CAUTION:** Risk of fire or explosion if the battery is replaced by an incorrect type. Replace only with the same or equivalent type. **WARNING:** The battery shall not be exposed to excessive heat such as sunshine, fire or the like.

Attention should be drawn to environmental aspects of battery disposal. Disposal of a battery into fire or a hot oven, or mechanically crushing or cutting of a battery, that can result in an explosion.

Leaving a battery in an extremely high temperature surrounding environment that can result in an explosion or the leakage of flammable liquid or gas.

A battery subjected to extremely low air pressure that may result in an explosion or the leakage of flammable liquid or gas.

Only suitable for mounting at heights < 2m.

Do not ingest battery, Chemical Burn Hazard.

This product contains a coin / button cell battery. If the coin / button cell battery is swallowed, it can cause severe internal burns in just 2 hours and can lead to death. Keep new and used batteries away from children. If the battery compartment does not close securely, stop using the product and keep it away from children. If you think batteries might have been swallowed or placed inside any part of the body, seek immediate medical attention.

## SIMPLIFIED EU DECLARATION OF CONFORMITY

The undersigned,

Legrand declares that the radio-electric equipment referred to in these instructions complies with directive 2014/53/EU.

The full text of the EU declaration of conformity is available on the following website:

[www.legrandoc.com](http://www.legrandoc.com)



## Documents / Resources



[legrand LE13229AA Netatmo Connected Starter Pack](#) [pdf] Installation Guide  
LE13229AA Netatmo Connected Starter Pack, LE13229AA, Netatmo Connected Starter Pack,  
Connected Starter Pack, Starter Pack, Pack

[Manuals+](#).