

legrand
CC-SG Raritan
CommandCenter
Secure Gateway



legrand CC-SG Raritan CommandCenter Secure Gateway User Guide

[Home](#) » [Legrand](#) » legrand CC-SG Raritan CommandCenter Secure Gateway User Guide 

Contents

- [1 legrand CC-SG Raritan CommandCenter Secure Gateway](#)
- [2 Product Usage Instructions:](#)
- [3 FAQs](#)
- [4 Documents / Resources](#)
 - [4.1 References](#)



legrand CC-SG Raritan CommandCenter Secure Gateway



Specifications

- Product Name: CommandCenter Secure Gateway
- Version: v12.0
- Supported Virtualization Platforms: VMware, Hyper-V

Product Usage Instructions:

Deploying CC-SG on VMware:

1. Requirements:

- Client computer running vSphere Client or vSphere web client
- The virtual appliance .OVF file available at the specified link

2. Install CommandCenter Secure Gateway on VMware ESXi:

- Connect to ESXi from your client computer using the provided URL
- Log in with appropriate permissions
- Choose File > Deploy OVF Template
- Select the .OVF file from the unzipped files
- Customize virtual machine details and settings
- Select inventory location, host, datastore, and network
- Review the summary and complete the deployment
- Power on the virtual machine and access the console for further steps

Deploying CC-SG on Hyper-V

1. Requirements:

- VHDF file extracted from the CC-SG installation zip file

2. Install CC-SG on Hyper-V:

- In Hyper-V Manager, select local machine and choose Action > New > Virtual Machine...
- Follow the wizard to create a new virtual machine with specified settings

Quick Setup Guide

Virtual Appliance – VMware, HyperV

CommandCenter Secure Gateway

- For additional information on any aspect of CommandCenter Secure Gateway, see CommandCenter Secure Gateway help, which can be accessed from the Product Support section of Raritan's website.
- This installation includes new deployments of the virtual CC-SG appliance on VMware, and HyperV virtual machines.

Download Installation Files

- Log in to raritan.com to access the installation files. See Get Your License (on page 7) for details.
- <http://www.raritan.com/support/CommandCenter-Secure-Gateway>.
- The installation files are packaged in a .ZIP file. Download the .ZIP file for your virtual environment.
 - VMware
 - HyperV

Deploying CC-SG on VMware

Requirements

1. ESXi to deploy the CommandCenter Secure Gateway virtual appliance
 - Must have a datastore with 40GB minimum available
 - Must have at least 4GB memory available
 - 2 physical NICs in the server. (ESXi networking refers to these as “vmnic”.)
 - A high availability cluster with access to shared storage is recommended. Fault tolerance may also be used. See CC-SG Admin Help “Using VMware High Availability or Fault Tolerance with a CC-SG Virtual Appliance”.
2. Client computer running vSphere Client, or vSphere web client.
3. The virtual appliance .OVF file, which is available at <http://www.raritan.com/support/commandcenter-secure-gateway>. See Download Installation Files for details.
 - CommandCenter Secure Gateway Virtual Appliance link: You must log in to the Raritan Software License Key Management site to view this link. See Get Your License.

Install CommandCenter Secure Gateway on VMware ESXi

1. Connect to the ESXi from your client computer by launching the URL “https://Hostname” or “https://IP” of the VCenter.
2. Log in as a user that has permission to create, start, and stop virtual machines.
3. Choose File > Deploy OVF Template.
4. Select Deploy From File then click Browse to go to the directory where you unzipped the files. Select the .OVF file. Click Next.
5. Details about the virtual machine that will be created display. You can change the default name of the virtual machine. Click Next.
6. Select the inventory location. Click Next.
7. Select the Host where you want to deploy the CommandCenter Secure Gateway. A host that is part of a high-availability cluster is recommended for failover protection. Click Next.
8. If you selected a cluster, select the specific host. Click Next.
9. Choose the datastore where all files will be stored. Make sure the data store has 40GB free. Click Next.
Note: Datastore availability is critical for proper and reliable operation. The data store should be highly available with redundant network access and routine backup.
10. Choose the network your CC-SG is being deployed on. Click Next.
11. View the summary then click Finish. Wait several minutes while the virtual machine is created.
12. Power on the virtual machine and launch the console. For next steps, go to Log in to Diagnostic Console to Set CC-SG IP Address (on page 6).

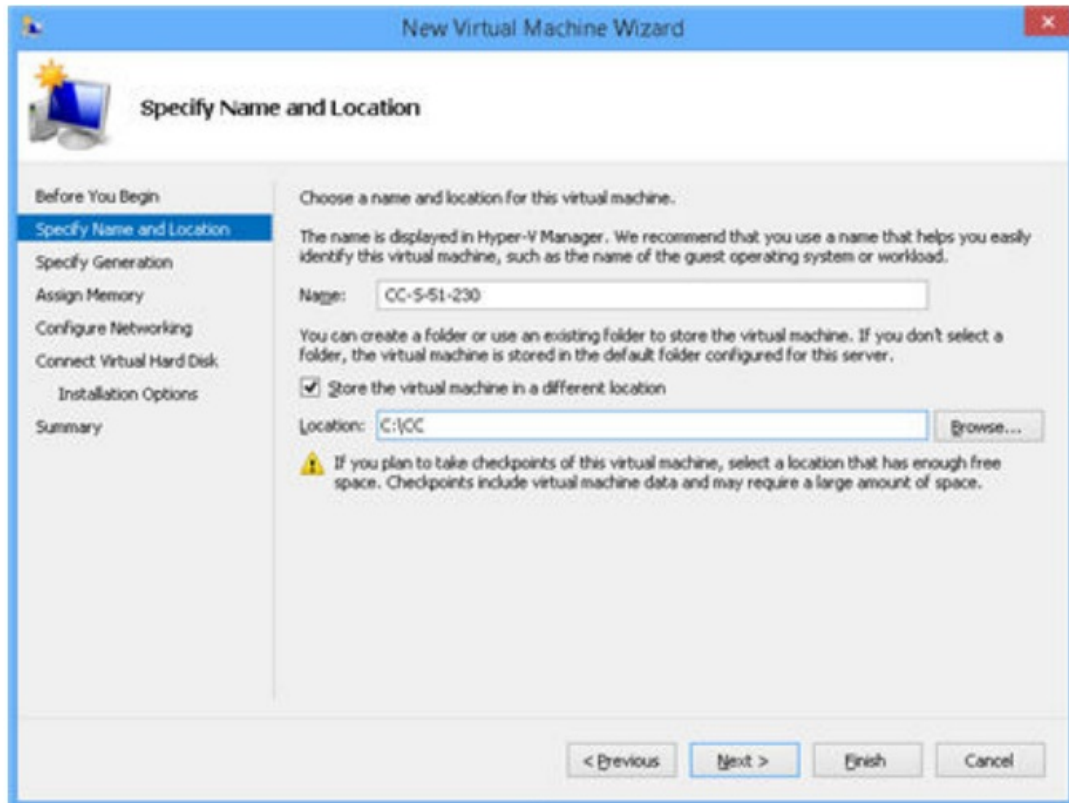
Deploying CC-SG on Hyper-V

Requirements

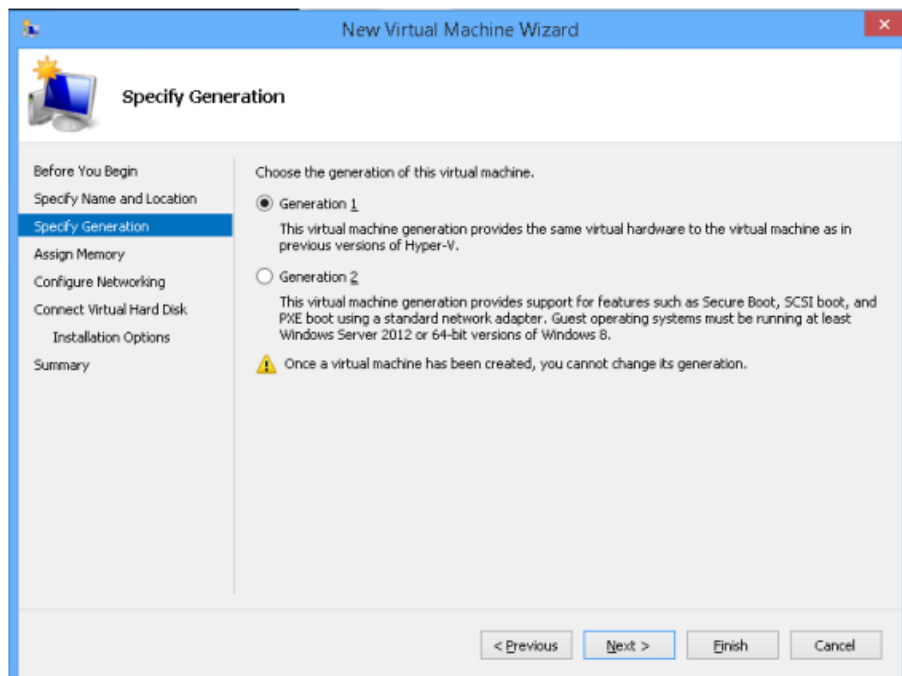
- Hyper-V feature is enabled on a Windows client.
- Hyper-V Manager can be accessed.

Install CC-SG on Hyper-V

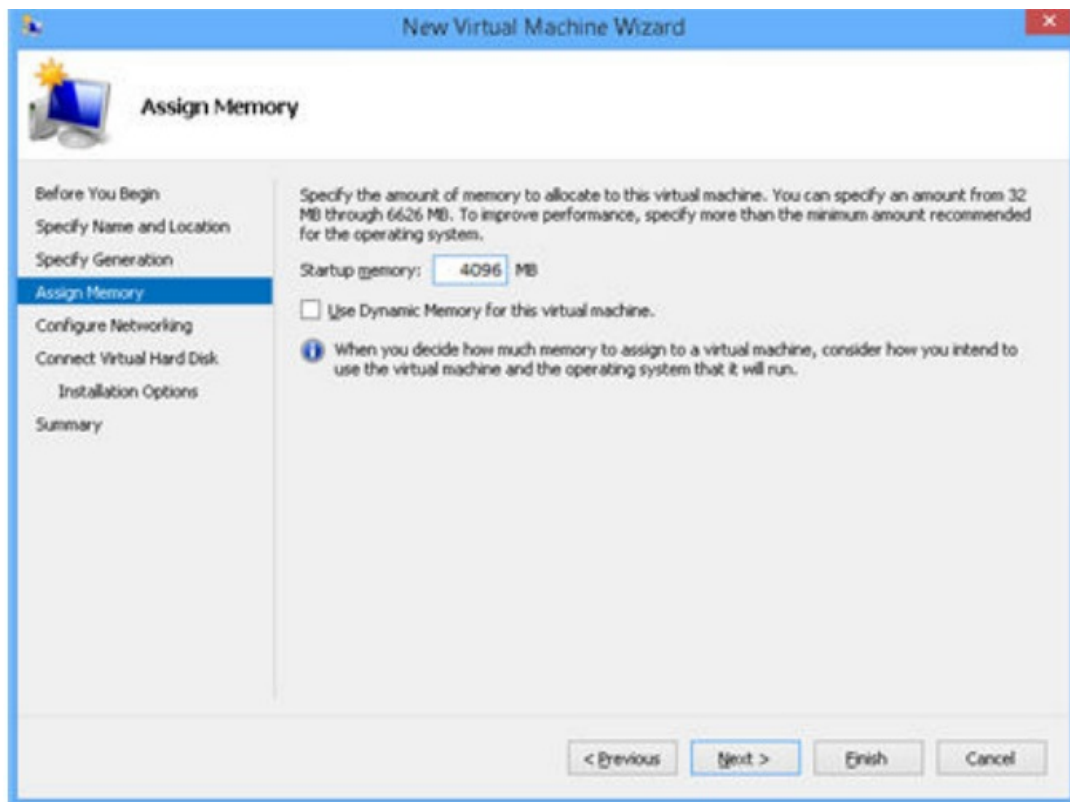
1. Extract the VHDF file from the CC-SG installation zip file.
2. In Hyper-V Manager, make sure your local machine is selected in the left panel, then choose Action > New > Virtual Machine... to open the New Virtual Machine wizard.
3. In the Before you Begin page, click Next.
4. Enter a name for the VM, and choose a location to store the VM. Click Next.



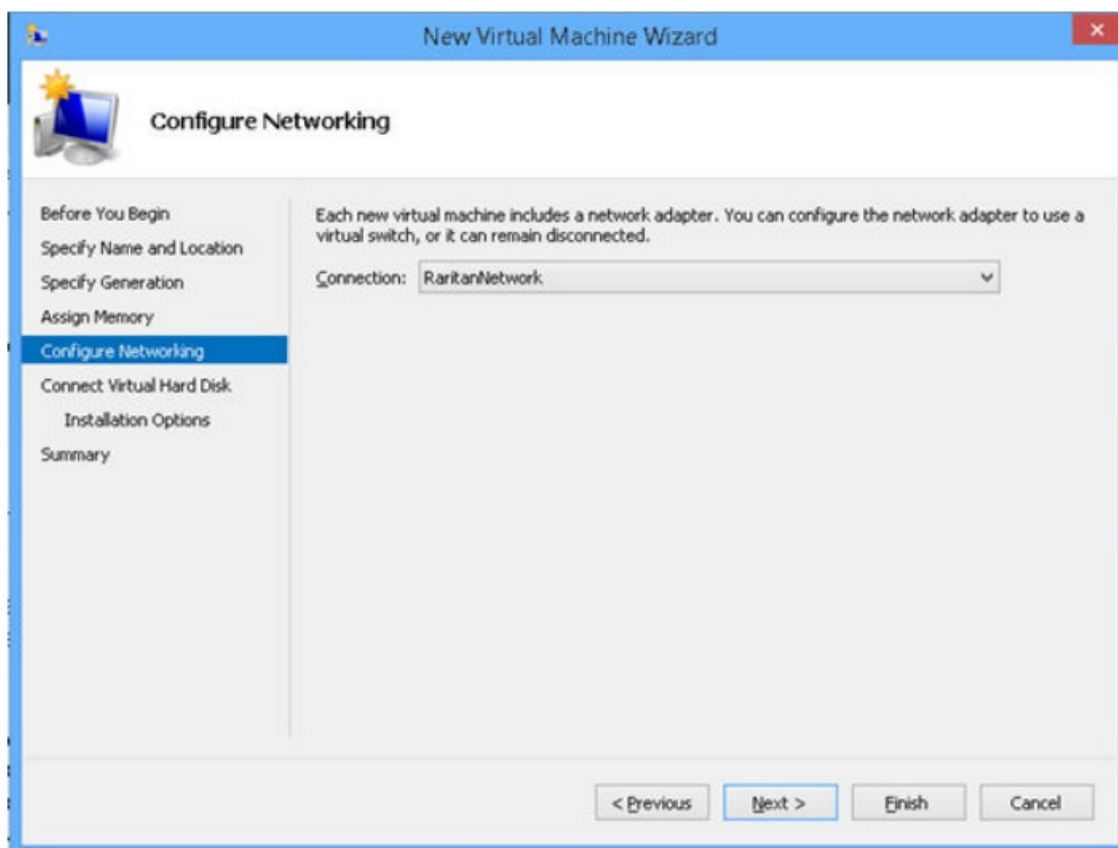
5. In the Specify Generation page, select Generation 1 only. CC-SG does not support Generation 2. Click Next.



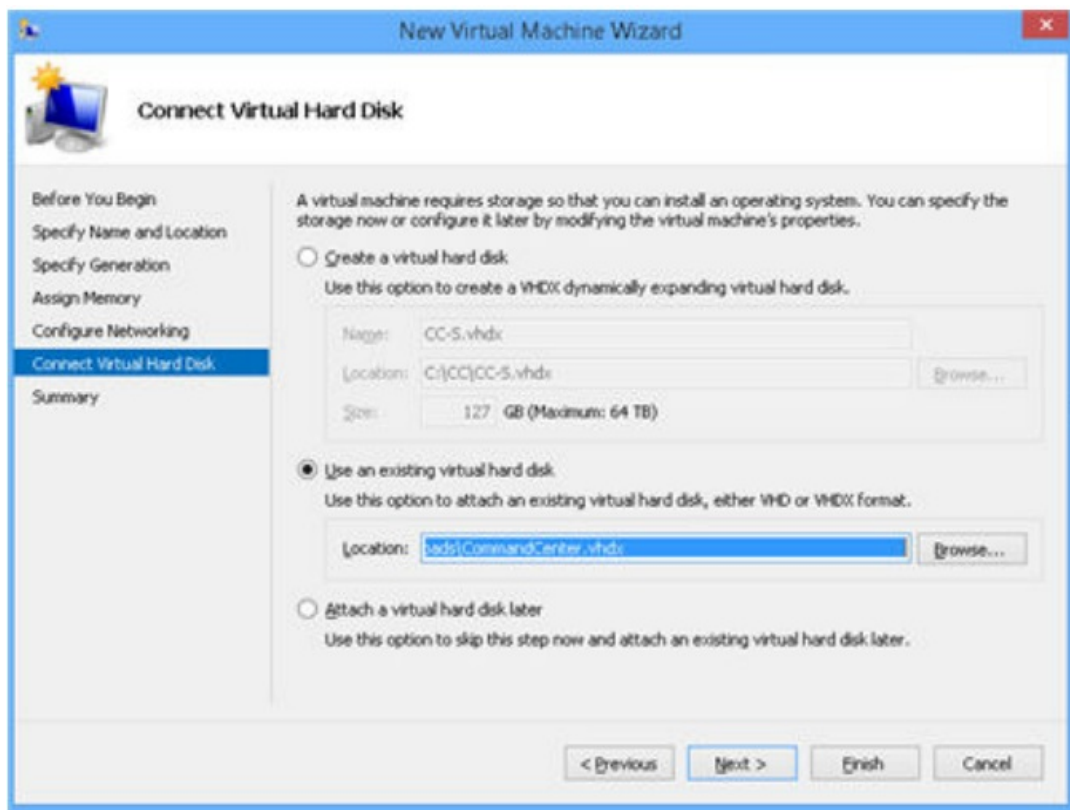
6. In the Assign Memory page, change the Startup Memory to 4GB (4096MB). Make sure that "Use Dynamic Memory for this virtual machine" is NOT selected. Click Next.



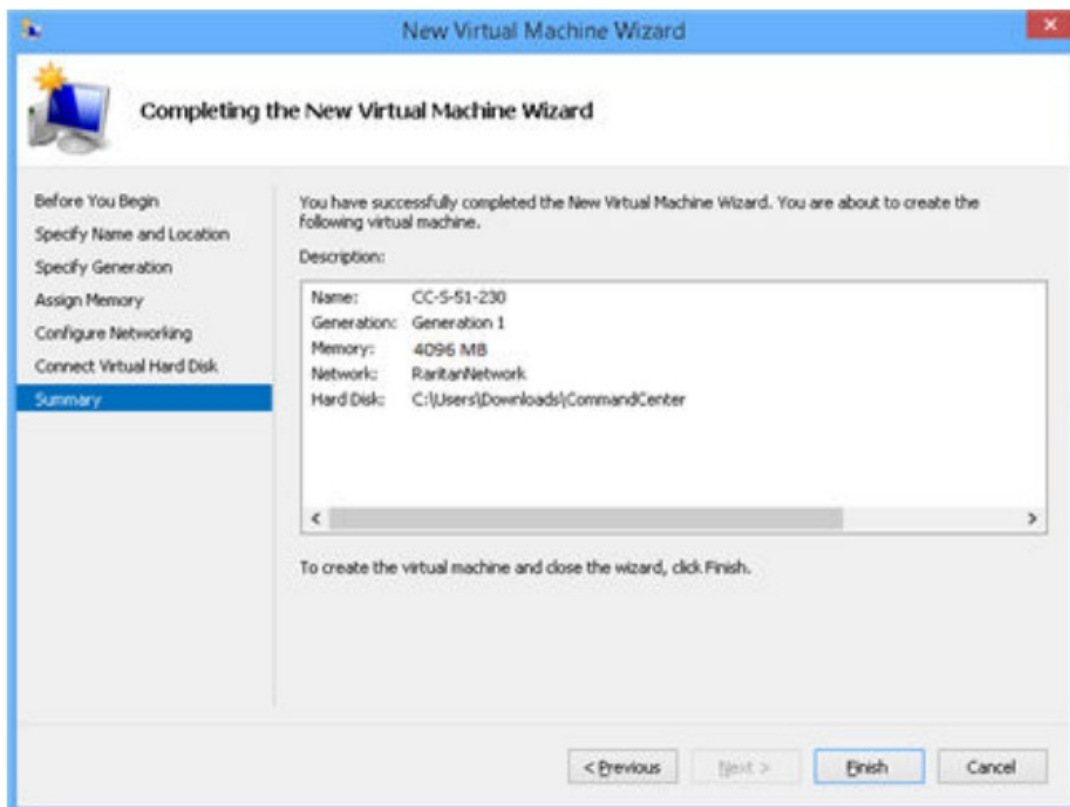
7. In the Configure Networking page, select the network configuration in your client environment. Click Next.



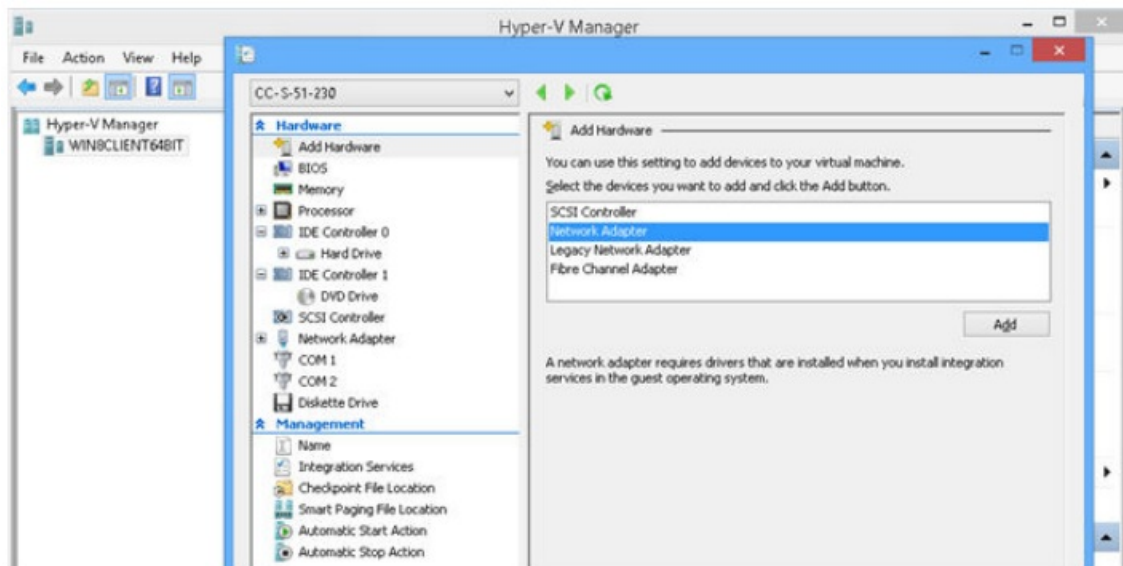
8. In the Connect Virtual Hard Disk page, select "Use an existing virtual hard disk", then click Browse to select the .VHDX file extracted earlier. Click Next.



9. A summary of the VM displays. Click Finish.



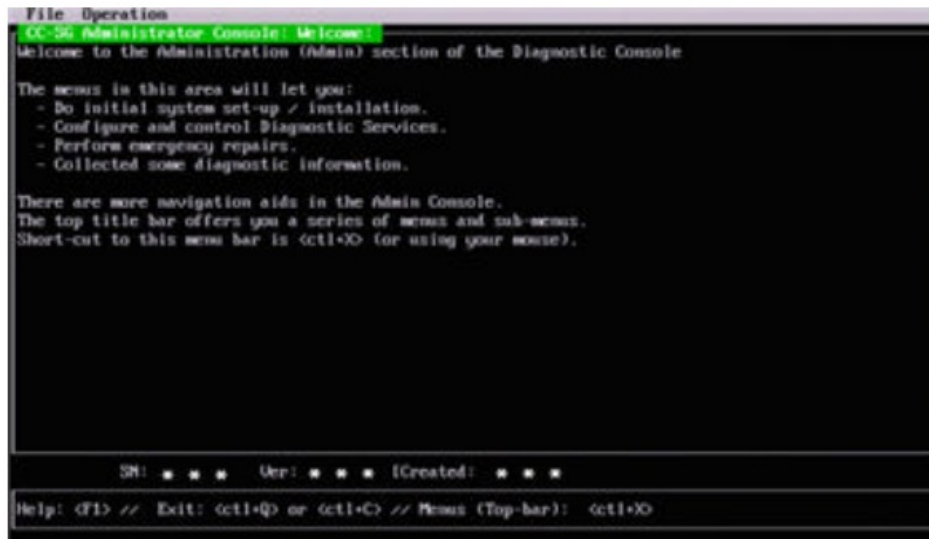
10. Select the newly created VM, then click Settings and add another network.



11. Start the new VM, and launch the console. For next steps, go to Log in to Diagnostic Console to Set CC-SG IP Address

Log in to Diagnostic Console to Set CC-SG IP Address

1. Log in as admin/raritan. Usernames and passwords are case-sensitive.
2. You will be prompted to change the local console password.
 - Type the default password (raritan) again.
 - Type and then confirm the new password.
3. Press CTRL+X when you see the Welcome screen.



4. Choose Operation > Network Interfaces > Network Interface Config. The Administrator Console appears.
5. In the Configuration field, select DHCP or Static. If you select Static, type a static IP address. If needed, specify DNS servers, netmask, and gateway address.
6. Select Save.

Default CC-SG Settings

- IP Address: DHCP

Subnet Mask: 255.255.255.0

Username/Password: admin/raritan

Log in to CC-SG

1. Launch a supported browser and type the URL of the CC-SG: <https://<IP address>/admin>. For example, <https://192.168.0.192/admin>.

Note: The default setting for browser connections is HTTPS/SSL encrypted.

2. When the security alert window appears, accept the connection.
3. You will be warned if you are using an unsupported Java Runtime Environment version. Follow the prompts to either download the correct version, or continue. The Login window appears.

Note: The client version is visible on the login page.

4. Type the default username (admin) and password (raritan) and click Login.
The CC-SG Admin Client opens. You are prompted to change your password. Strong passwords are enforced for admin.

Get Your License

1. The license administrator designated at time of purchase will receive an email from Raritan Licensing Portal when licenses are available. Use the link in the email, or go directly to www.raritan.com/support. Create a user account and login, then click "Visit The License Key Management Tool". The licensing account information page opens.
2. Click the Product License tab. The licenses you purchased display in a list. You may have only 1 license, or multiple licenses.
3. To get each license, click Create next to the item in the list. If you have more than 1 license, such as a base license of CCSG128-VA and an add-on license of CCL-1024, create the base license first.
 1. Enter the Host ID of the virtual machine where you installed the CC-SG virtual appliance. You can copy the Host ID from the Administration > License Management page in the Admin Client, in the CC-SG Host ID field at the top of the page.

Sample Host ID: 98A77180737E600FVP9FF1707ED0CE2154CF7FD6

1. Click Create License. The details you entered display in a pop-up. Verify that your Host ID is correct. For clusters, verify both Host IDs.

Warning: Make sure the Host ID is correct! A license created with an incorrect Host ID is not valid and requires Raritan Technical Support's help to fix.
2. Click OK. The license file is created.
3. Click Download Now and save the license file.

Install and Check Out Your License

1. In the CC-SG Admin Client, choose Administration > License Management.
2. Click Add License.
3. Read the license agreement and scroll down the whole text area, then select the I Agree checkbox.
4. Click Browse, then select the license file and click OK.

- You must check out licenses to activate the features.

5. Select a license from the list then click Check Out. Check out all the licenses you want to activate.

Additional Information

- For more information about CommandCenter Secure Gateway and the entire Raritan product line, see Raritan's website (www.raritan.com). For technical issues, contact Raritan Technical Support. See the Contact Support page in the
- Support section on Raritan's website for technical support contact information worldwide.
- Raritan's products use code licensed under the GPL and LGPL. You can request a copy of the open source code. For details, see the Open Source Software Statement at
- (<https://www.raritan.com/about/legal-statements/open-source-software-statement/>) on Raritan's website.



CC-SG Virtual Appliance Quick Setup Guide – VMware, and HyperV QSG-CCVirtual-v12.0-B

FAQS

Q: Can CC-SG be deployed on other virtualization platforms?

A: Currently, CC-SG supports deployment on VMware and Hyper-V only. Support for other platforms may be considered in future updates.

Documents / Resources

	<p>legrand CC-SG Raritan CommandCenter Secure Gateway [pdf] User Guide CC-SG-Virtual-QSG-v12.0, QSG-CCVirtual-v12.0-B, CC-SG Raritan CommandCenter Secure Gateway, CC-SG, Raritan CommandCenter Secure Gateway, CommandCenter Secure Gateway, Secure Gateway, Gateway</p>
	<p>legrand CC-SG Raritan CommandCenter Secure Gateway [pdf] User Guide CC-SG Cloud Appliance - AWS and Azure, CC-SG Raritan CommandCenter Secure Gateway, CC-SG, Raritan CommandCenter Secure Gateway, CommandCenter Secure Gateway, Secure Gateway, Gateway</p>

References

- [User Manual](#)

[Manuals+](#), [Privacy Policy](#)

This website is an independent publication and is neither affiliated with nor endorsed by any of the trademark owners. The "Bluetooth®" word mark and logos are registered trademarks owned by Bluetooth SIG, Inc. The "Wi-Fi®" word mark and logos are registered trademarks owned by the Wi-Fi Alliance. Any use of these marks on this website does not imply any affiliation with or endorsement.