



## legrand AA5204MB Smart in Wall Multicolor Switch Wireless Control Instruction Manual

[Home](#) » [Legrand](#) » legrand AA5204MB Smart in Wall Multicolor Switch Wireless Control Instruction Manual 

legrand AA5204MB Smart in Wall Multicolor Switch Wireless Control



## Contents

- [1 Introduction](#)
- [2 Pack Contents](#)
- [3 Replacing The Battery](#)
- [4 SIMPLIFIED EU DECLARATION OF CONFORMITY](#)
- [5 Safety Instructions](#)
- [6 Documents / Resources](#)
  - [6.1 References](#)
- [7 Related Posts](#)

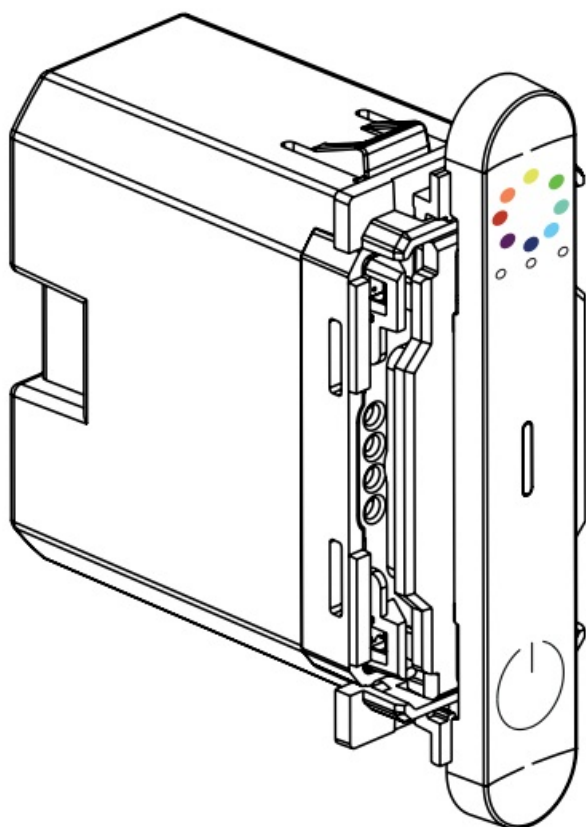
## Introduction

Smart in wall multicolor switch wireless control  
AA5204MB/MT/MW – AC5204MB/MT/MW 5 744 24/25/26/27

This product is a connected accessory which requires you to buy and install the Arteor TM Advance with Netatmo Smart Gateway.

## Pack Contents

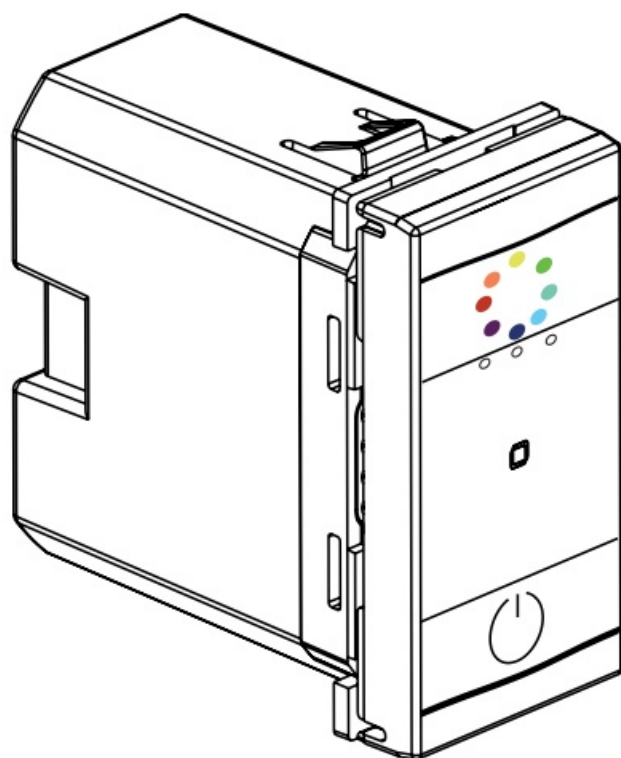
AA5204..  
Smart in wall multicolor switch wireless control



**x1**

**OR**

AC5204..  
5 744 24/25/26/27  
Smart in wall multicolor switch wireless control



**x1**

Frequency bands: 2.4 – 2.4835 GHz – Power level < 100 mW

To add a connected product to your connected installation, you should follow the instructions:

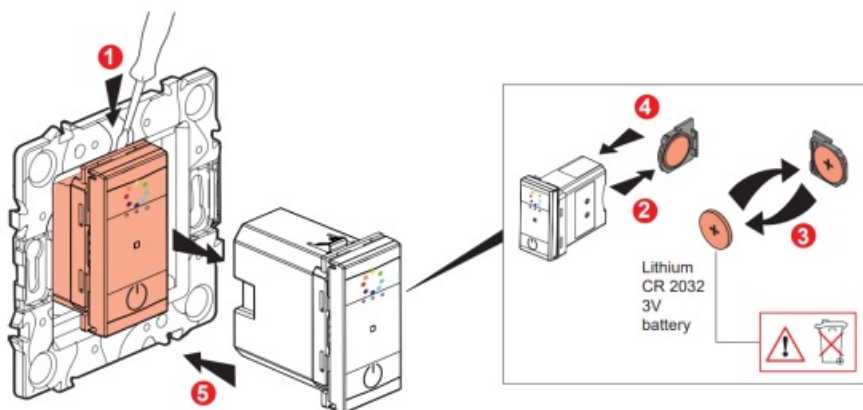
- in the Legrand Home + Control application (settings/Add a new product section).
- or consult the user manual on [legrand.com](http://www.legrand.com)



[www.legrand.com/reference/AC5204MW](http://www.legrand.com/reference/AC5204MW)

LEGRAND – Pro and Consumer Service – BP 30076 87002 LIMOGES CEDEX FRANCE • [www.legrand.com](http://www.legrand.com)

## Replacing The Battery



## SIMPLIFIED EU DECLARATION OF CONFORMITY

The undersigned, Legrand declares that the radio-electric equipment referred to in these instructions complies with directive 2014/53/EU.

The full text of the EU declaration of conformity is available on the following website:

[www.legrand.com/ecatalogue](http://www.legrand.com/ecatalogue)

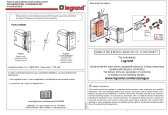


## Safety Instructions

This product should be installed in compliance with installation rules, preferably by a qualified electrician. Incorrect installation and/or incorrect use can lead to risk of electric shock or fire.

Before carrying out the installation, read the instructions and take account of the product's specific mounting location. Do not open up, dismantle, alter or modify the device except where specifically required to do so by the instructions. All Legrand products must be opened and repaired exclusively by personnel trained and approved by Legrand. Any unauthorised opening or repair completely cancels all liabilities and the rights to replacement and guarantees. Use only Legrand brand accessories.





[legrand AA5204MB Smart in Wall Multicolor Switch Wireless Control](#) [pdf] Instruction Manual  
AA5204MB-MT-MW, AC5204MB-MT-MW, AA5204MB Smart in Wall Multicolor Switch Wireless Control, AA5204MB, Smart in Wall Multicolor Switch Wireless Control, Multicolor Switch Wireless Control, Switch Wireless Control, Wireless Control

## References

- [Welcome to Legrand - Legrand](#)
- [Welcome to Legrand - Legrand](#)
- [Legrand E-catalog International | Electrical Ranges of products & Connected Solutions](#)
- [User Manual](#)

[Manuals+](#), [Privacy Policy](#)

This website is an independent publication and is neither affiliated with nor endorsed by any of the trademark owners. The "Bluetooth®" word mark and logos are registered trademarks owned by Bluetooth SIG, Inc. The "Wi-Fi®" word mark and logos are registered trademarks owned by the Wi-Fi Alliance. Any use of these marks on this website does not imply any affiliation with or endorsement.