



legrand 752784A Valena Allure with Netatmo Instruction Manual

[Home](#) » [Legrand](#) » legrand 752784A Valena Allure with Netatmo Instruction Manual 

Contents

- [1 legrand 752784A Valena Allure with Netatmo](#)
- [2 Product Information](#)
- [3 Product Usage Instructions](#)
- [4 Pack contents](#)
- [5 Wiring precautions](#)
- [6 Documents / Resources](#)



legrand 752784A Valena Allure with Netatmo



Product Information

The connected switch (with dimmer option) without neutral is a part of the Valena Allure with Netatmo connected starter pack. It is a connected accessory that requires the installation of the starter pack. The switch operates in frequency bands of 2.4 to 2.4835 GHz with a power level of less than 100 mW. It is compatible with LED bulbs and has specific characteristics for different voltage levels and wire sizes. The switch can also function in dimmer mode with dimmable bulbs.

Please note that the connected switch is not compatible with ferromagnetic transformers as it may break the product. The use of a bleeder (ref 040149) is mandatory to avoid flash ghost effects when the load is turned off.

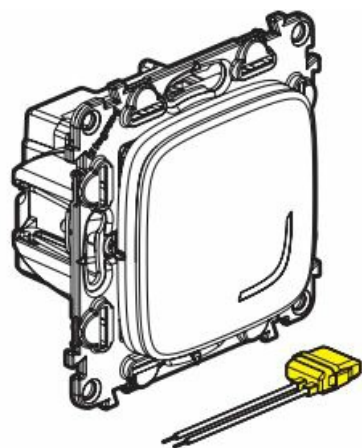
Product Usage Instructions

1. Before starting, ensure that the power is switched off at the main circuit breaker.
2. Uninstall the old switch and wire the connected switch according to the provided instructions.
3. Wire the provided bleeder as close to the load as possible and make sure to have a bulb installed before turning on the power to ensure proper functionality of the connected switch.
4. If you plan to install two-way light switches or switched power outlets, follow the recommended wiring precautions and use wireless light switches for other controls.
5. For dimmer mode operation, use dimmable bulbs that are identifiable by the logo on the packaging.
6. If replacing an existing 2-way switch, follow the specific instructions provided for replacement with a connected switch + wireless light switch or a mechanical push button + connected wired switch.
7. To add a connected product to your installation, refer to the Legrand Home + Control application or consult the user manual on legrand.com for instructions.

This pack is a connected accessory that requires you to buy and install the Valena Allure with Netatmo connected starter pack first.

Pack contents

- Connected switch (with dimmer option) + bleeder



- Site Protection



- **Frequency bands:** 2.4 – 2.4835 GHz
- **Power level:** < 100 mW

Characteristics

In default mode (on/off), this switch works with the following types of bulbs:

 50/60 Hz	 2 x 1,5 mm ² 1 x 2,5 mm ²		(*) LED 	
240 V~	Max.	125 W	125 VA	125 VA
	Min.	5 W	5 VA	5 VA
110 V~	Max.	75 W	75 VA	75 VA
	Min.	5 W	5 VA	5 VA

(*) or 10 bulbs max. For comfortable lighting, we recommend using bulbs of the same type and manufacturer.

Product NOT COMPATIBLE with ferromagnetic transformer

Risk of the product breaking

In the dimmer option operating mode (which can be activated via the App), this switch functions only with dimmable bulbs (identifiable by the logo on the packaging).

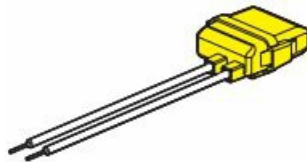


The bleeder ref 040149 has to be used systematically to :

- avoid flash ghost effects when the load is OFF.

110-240 V~	50/60 Hz	11 mA max.	- 5° C → + 55° C

Only one bleeder per circuit

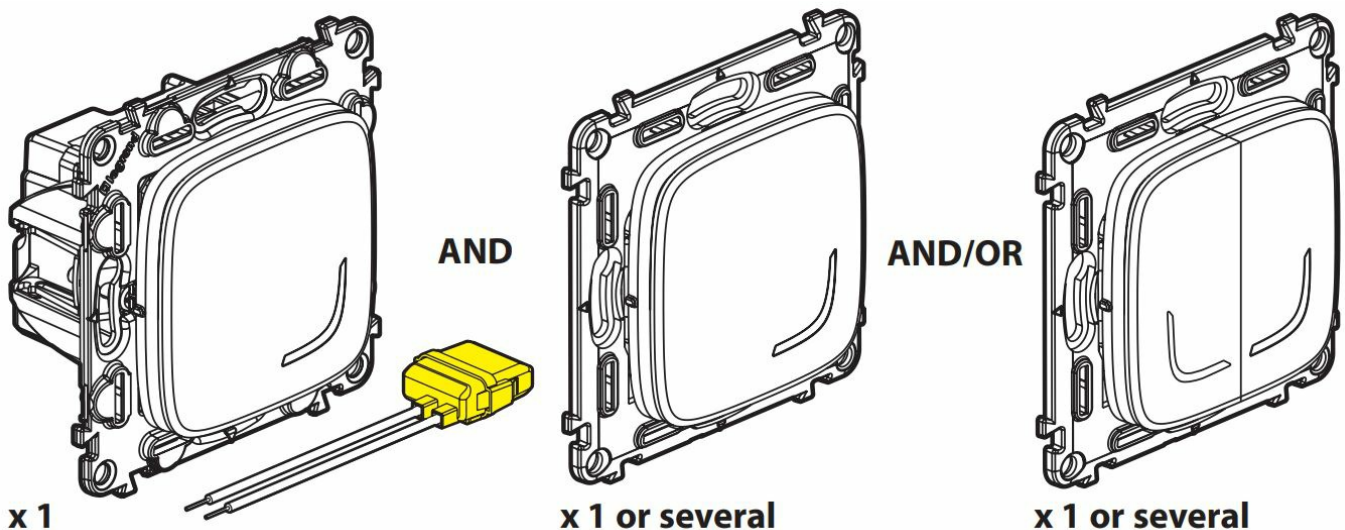


Before starting:

Wiring precautions

If you plan to install two-way light switches or switched power outlets, read the following precautions:

To control a light with two or more switches, only use the following products:



- Connected switch without neutral (with dimmer option) + bleeder
- Wireless light switches for all other controls (not included in this pack)

Do not use two connected switches (with a dimmer option) to control the same lighting point.

Mandatory safety precautions

OFF

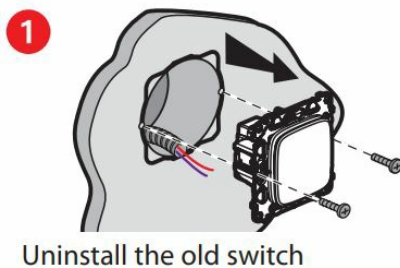


- OFF Switch off the power at the main circuit breaker
- Make sure that the power is off before continuing with the installation.

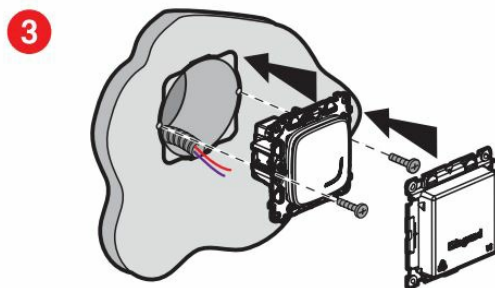
Install the connected switch

(with dimmer option)

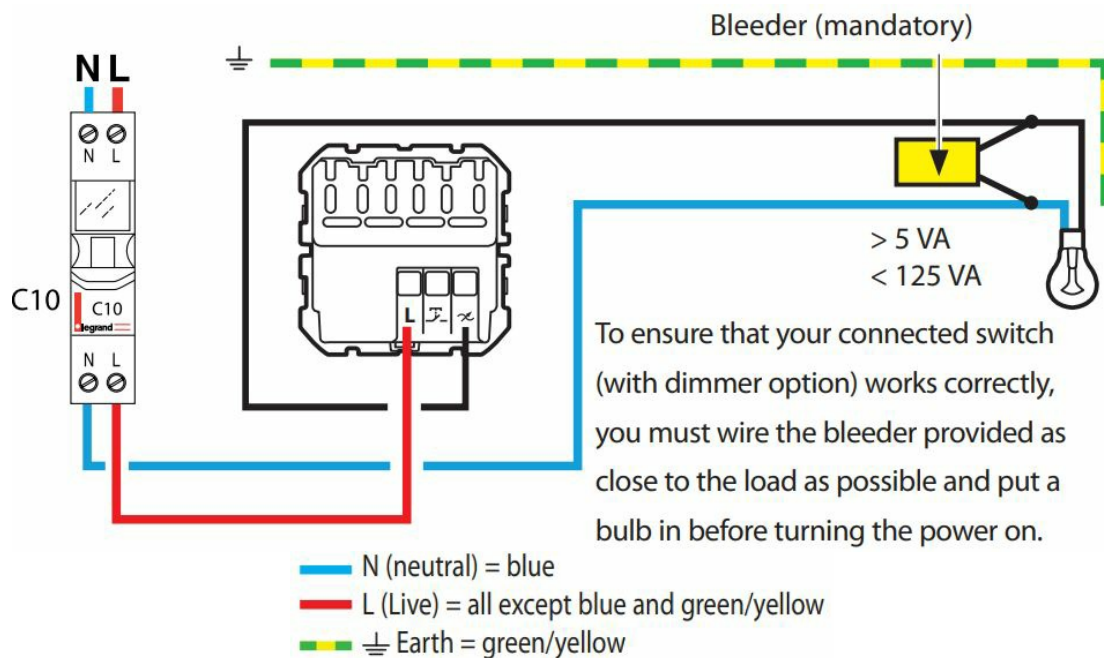
1. Uninstall the old switch



Uninstall the old switch



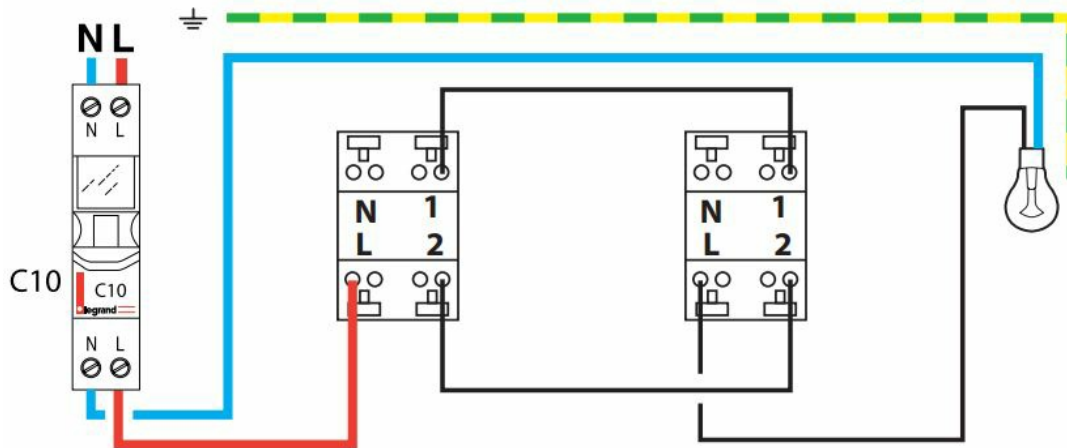
2. Wire the connected switch



The connected switch (with a dimmer option) works with standard bulbs or dimmable bulbs including LEDs over 5 W. Using dimmable LEDs is mandatory when dimmer mode is activated.

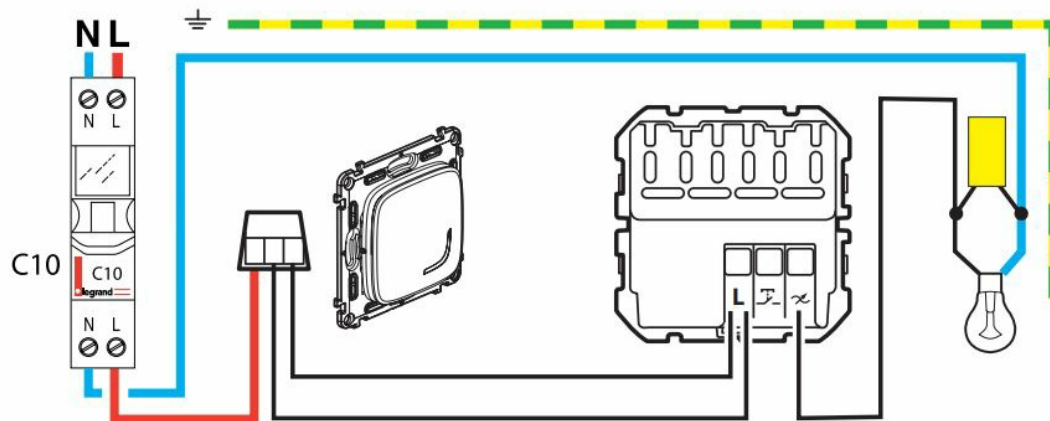


Existing wiring



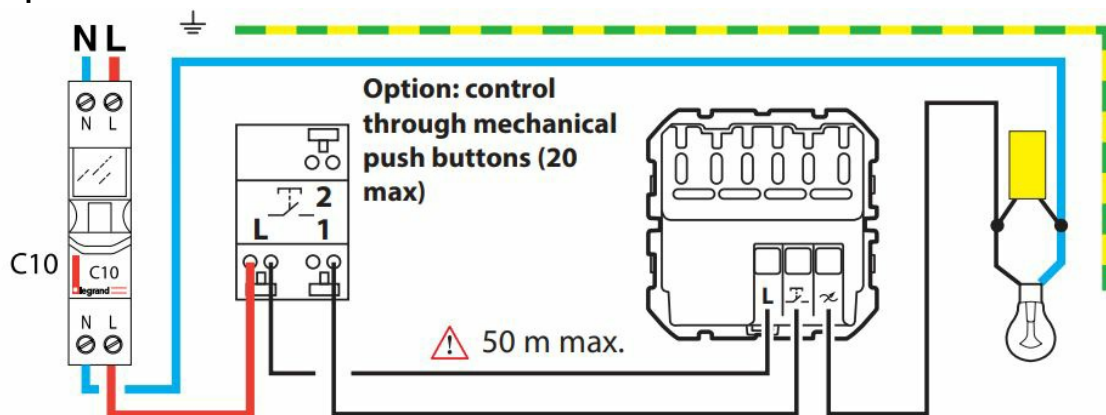
Replacement of an existing 2-way switch by a connected switch + wireless light switch

The previous switch was replaced by the wireless light switch



- Use a connector to connect all 3 wires (travelers 1 and 2 and lamp return wire). Use a dedicated connector to insulate the neutral wire (if present)
- Replacement of a 2-way switch by a connected switch + mechanical push-button. The previous switch was replaced by the mechanical push button

Mechanical push button + connected wired switch



To add a connected product to your connected installation, you should follow the instructions:

- in the Legrand Home + Control application (Settings/Add a new product section)

- or consult the user manual on legrand.com

www.legrand.com

LEGRAND – Pro and Consumer Service – BP 30076 87002 LIMOGES CEDEX FRANCE www.legrand.com

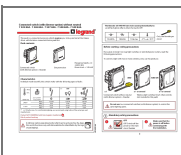
Safety instructions

This product should be installed in compliance with installation rules, preferably by a qualified electrician. Incorrect installation and/or incorrect use can lead to the risk of electric shock or fire. Before carrying out the installation, read the instructions and take account of the product's specific mounting location. Do not open up, dismantle, alter, or modify the device except where specifically required to do so by the instructions. All Legrand products must be opened and repaired exclusively by personnel trained and approved by Legrand. Any unauthorized opening or repair completely cancels all liabilities and the rights to replacement and guarantees. Use only Legrand brand accessories.

SIMPLIFIED EU DECLARATION OF CONFORMITY

The undersigned, Legrand declares that the radio-electric equipment referred to in these instructions complies with directive 2014/53/EU. The full text of the EU Declaration of Conformity is available on the following website: www.legrandoc.com

Documents / Resources



[legrand 752784A Valena Allure with Netatmo](#) [pdf] Instruction Manual
752784A Valena Allure with Netatmo, 752784A, Valena Allure with Netatmo, Allure with Netatmo, Netatmo