



LEGO 75304 DARTH VADER HELMET INSTALLATION GUIDE

[Home](#) » [Lego](#) » [LEGO 75304 DARTH VADER HELMET INSTALLATION GUIDE](#) 



LEGO® DARTH VADER HELMET
#75304 LIGHT KIT
INSTALLATION GUIDE



Contents

- 1 [Light My Bricks](#)
- 2 [PACKAGE CONTENTS:](#)
- 3 [LEGO PIECES:](#)
- 4 [Before You Begin](#)
- 5 [Before You Begin](#)
- 6 [FINAL PRODUCT](#)
- 7 [TROUBLESHOOTING](#)
- 8 [CONTACT US](#)
- 9 [Documents / Resources](#)
- 10 [Related Posts](#)

Light My Bricks



LEGO® DARTH VADER HELMET

#75304 LIGHT KIT

INSTALLATION GUIDE

Hi There!

We're here to help you get started on the LEGO®

Darth Vader Helmet (75304) Light Kit.

This PDF details the instructions for the LED light & sound kit only.

If you run into any issues, please refer to the troubleshooting section towards the end of this guide.

Have fun and enjoy!



PACKAGE CONTENTS:



2 x Red 30cm Bit Lights

3 x Red 30cm Large Bit Lights

1 x Cool White 30cm Large Bit Light



1 x 8 Port Expansion Board



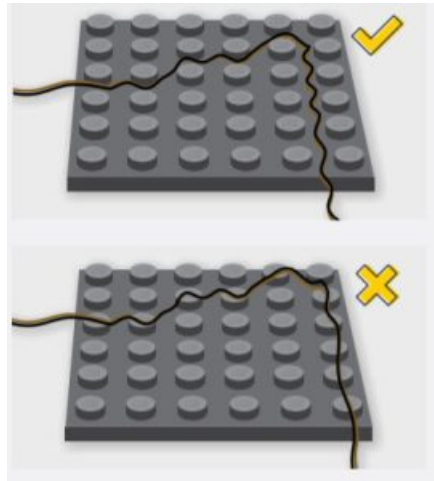
855097

LEGO PIECES:

- 2 x Black Round Plate 1×1 w Open Stud
- 2 x Black Arm Skeleton, Bent w Clips (Horizontal Grip)
- 4 x Black 1×1 Modified Plate Rounded with Handle
- 2 x Black 1×6 Plate

Before You Begin

Laying cables in between and underneath bricks



Cables can fit in between and underneath LEGO® bricks, plates, and tiles providing they are laid correctly between the LEGO® studs. Do NOT forcefully join LEGO® together around cables; instead, ensure they are lying comfortably in between each stud.

CAUTION: Forcing LEGO® to connect over a cable can result in damaging the cable and light.

Connecting Cable Connectors To Expansion Boards



Take extra care when inserting connectors to ports of Expansion Boards. Connectors can be inserted only one way. With the expansion board facing up, look for the soldered "=" symbol on the left side of the port. The connector side with the wires exposed should be facing toward the soldered "=" symbol as you insert it into the port. If a plug won't fit easily into a port connector, do not force it.

Incorrectly inserting the connector can result in bent pins inside the port or possible overheating of the expansion board when connected.

Before You Begin



Connecting Cable Connectors To Strip Lights

Take extra care when inserting connectors to ports on the Strip Lights. Connectors can be inserted only one way. With the Strip Light facing up, ensure the side of the connector with the wires exposed is facing down. If a plug won't fit easily into a port connector, don't force it. Doing so will damage the plug and the connector.

Connecting Micro Cable Connectors To Micro Expansion Board Ports

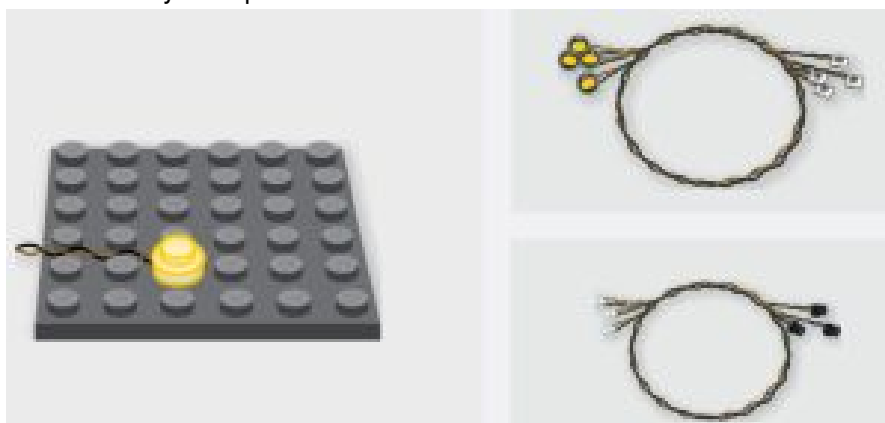


Take extra care when inserting the micro connectors to micro ports of Micro Expansion Boards. Connecting Micro Bit Lights to Micro Expansion Boards is similar to connecting lights and cables to Strip Lights. With the expansion board facing up, ensure the side of the connector with the wires exposed is facing down. If a plug won't fit easily into a port connector, do not force it. Use your fingernail to push the plastic part of the connector to the micro port.

Installing Bit Lights Under Lego® Bricks And Plates

When installing Bit Lights under LEGO® pieces, ensure they are placed the correct way up (Yellow LED component exposed).

You can either place them directly on top of LEGO® studs or in between.

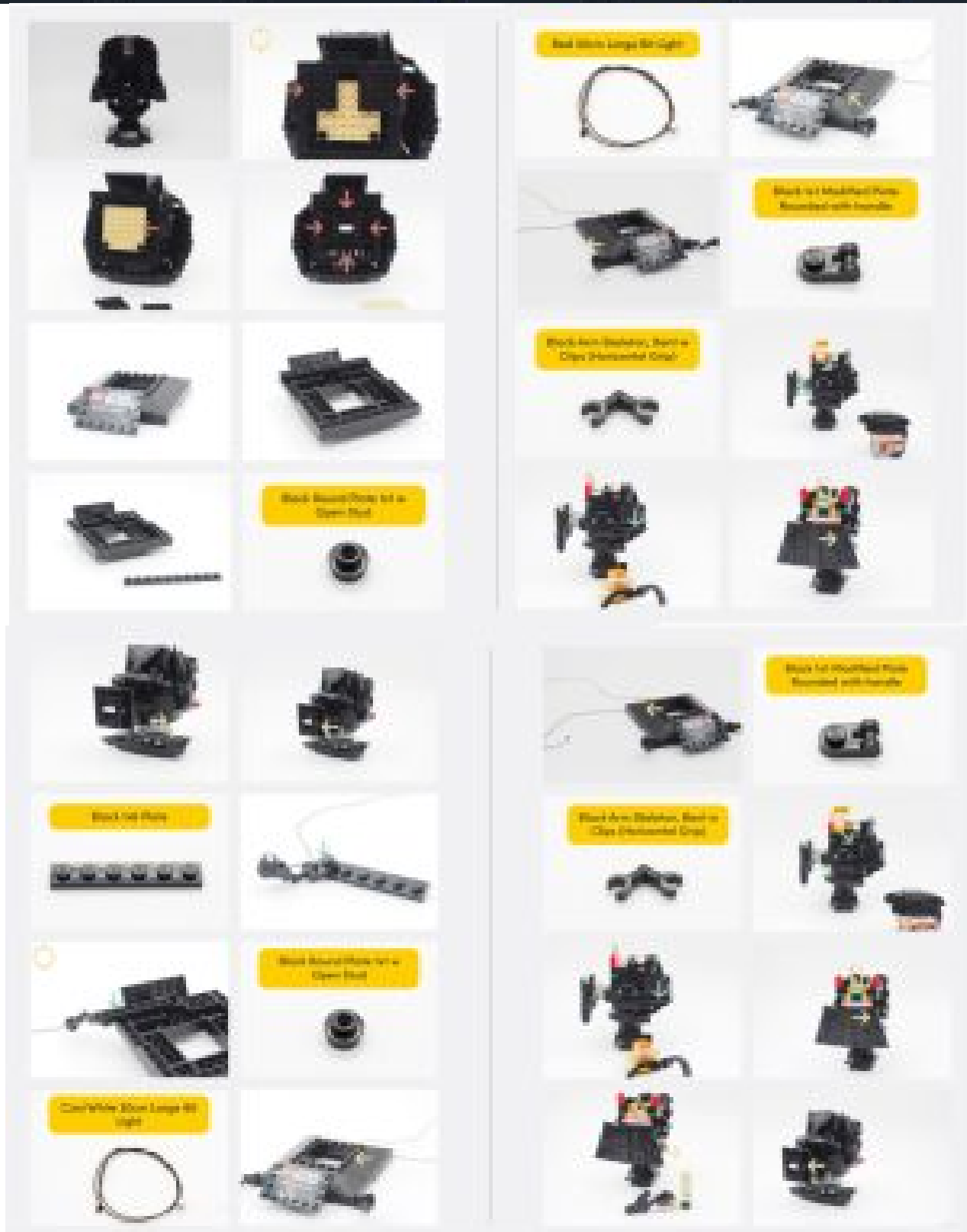




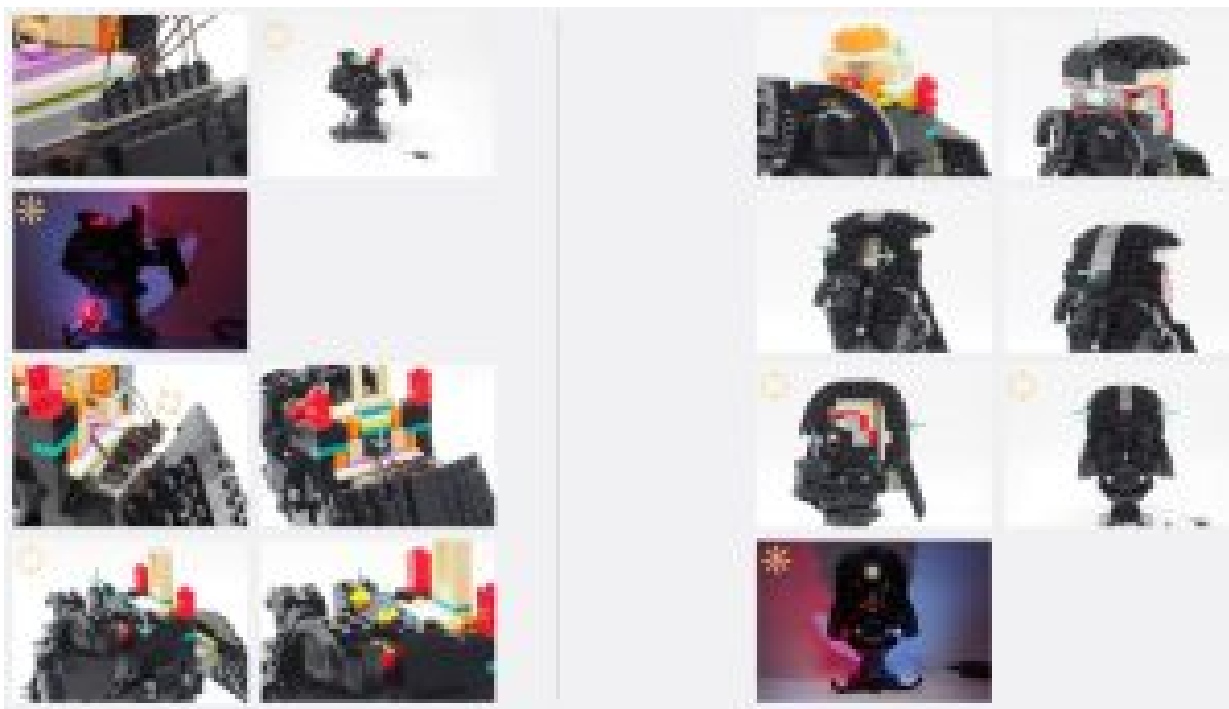
INSTRUCTIONS

To ensure a smooth installation of your light kit, please read and follow each step carefully. If you run into any issues, please refer to the online troubleshooting guide.

 US	 Disconnect	 Connect & Reconnect	 Front / Rear	 Up / Down	 Left / Right	 Power On / Off
 UK	 Disconnect	 Connect & Reconnect	 Front / Rear	 Up / Down	 Left / Right	 Power On / Off
 FR	 Disconnect	 Connect & Reconnect	 Front / Rear	 Up / Down	 Left / Right	 Power On / Off
 IT	 Disconnect	 Connect & Reconnect	 Front / Rear	 Up / Down	 Left / Right	 Power On / Off







FINAL PRODUCT

This finally completes the installation of the Light My Bricks Darth Vader Helmet 75304 Light Kit.



TROUBLESHOOTING

Light My Bricks lighting kits contain individual components that are very small and can be easily damaged if not handled correctly.

To prevent unnecessary damage to components, we highly recommend that the User Guide section, “Important things to note” is read carefully. Follow the handling procedures in the User Guide to help prevent faults and damages to your Light My Bricks components.

If you are experiencing issues with your Light My Bricks set, watch our troubleshooting video or read on for a list of common causes to help you troubleshoot.

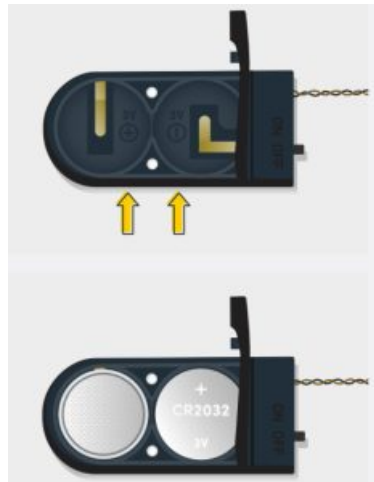
Firstly, ensure that the batteries have power using a battery charge gauge. If the batteries have no power, replace the batteries. If the batteries still have power, check to see if the batteries have been inserted correctly into the battery pack.

Check For CR2032 Batteries Using The Flat Battery Pack

Inside the battery pack is a symbol indicating which side the (round) CR2032 battery should be inserted. Check

that the “+” side of the battery pack has the battery with the “+” symbol facing downwards.

On the opposite side, the “-” side of the battery pack should have the battery flipped upside down, that is the “+” symbol facing upwards



Check For Cr2032 Batteries Using The Round Battery Pack

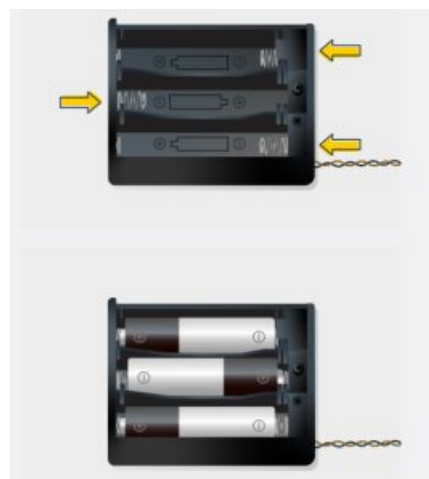
Inside the battery pack is a symbol indicating which side the (round) CR2032 battery should be inserted. In this case, for the stacked battery pack, ensure that BOTH batteries have the “+” symbol facing upwards.



Check for AA batteries using the AA battery pack

Inside the battery pack are symbols indicating which direction the AA battery should be inserted. The flat side of the battery should be paired with the spring side of the battery pack.

If the batteries have been installed correctly and your kit still isn't operating correctly, the next step is to check the wiring.



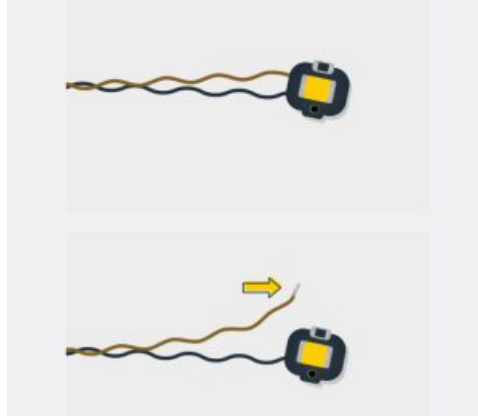
Check Your Wires

In order for Light My Bricks components to fit in between and underneath LEGO® bricks, the components need to be very small. Due to this nature, Light My Bricks components can be easily damaged when not handled correctly.

Be careful when removing unpacked components out of the packaging and ensure not to forcibly pull at the wires as this can damage the soldering that attaches the wires to the LEDs.

If the wiring is detached from the LED itself, the light will not operate.

When connecting lights to your LEGO set, check that there are no pinched wires underneath or in between bricks and plates. When the wires are pinched and the exposed wires are touching each other, this can cause a crosswire and the lights to not function correctly.

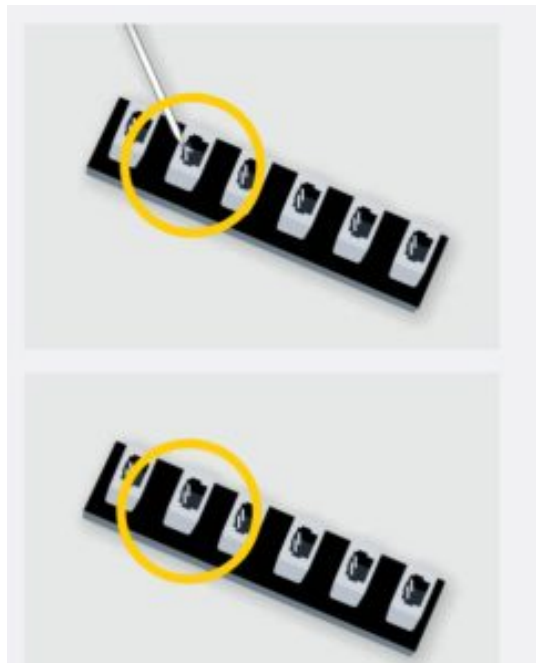


Check Your Expansion Board Ports/ Strip Light Ports /Effects Board Ports

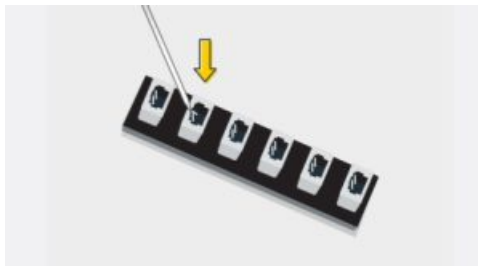
It is important to note that connectors can only be inserted to the expansion board, strip light, or effects board ports in one direction.

Forcibly inserting connectors in the incorrect direction will result in damaging the pins inside each of the ports on your component board.

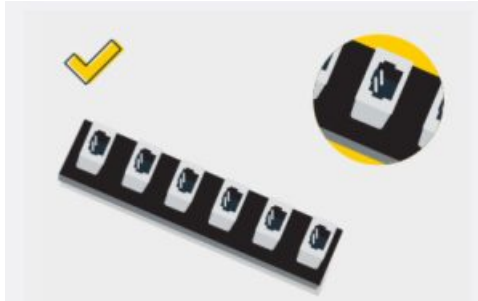
Not only will a light connected to the damaged port not work, but if the pins inside the port are bent to a point they are touching each other, this can result in all other lights in the system to stop working. This is a short circuit.



A short circuit can also result in overheating of the board, cable or batteries. If you suspect a short circuit, DISCONNECT POWER IMMEDIATELY Batteries can fail, catch fire, or even explode if left connected to a short circuit for too long.



If you suspect you have a faulty component due to a bent pin, try the following steps:



If you look carefully inside each of the ports, each port contains 2 small pins that should be straight. You will be able to identify a faulty port if it has any bent pins.



CONTACT US

If you have an inquiry regarding the online shop, our products, or a general inquiry please refer to our Frequently Asked Questions webpage. Alternatively, you can contact our Customer Services team by visiting our online support portal.

support.lightmybricks.com

We thank you for purchasing this product and hope you enjoy it!



Documents / Resources



[LEGO 75304 Darth Vader Helmet](#) [pdf] Installation Guide

75304, Lego Darth Vader Helmet, 75304 Lego Darth Vader Helmet, Darth Vader Helmet