

**LEFTON**  
BFWS2402 3 Hole  
Bathroom Faucet With  
Temperature Display



## LEFTON BFWS2402 3 Hole Bathroom Faucet With Temperature Display Installation Guide

[Home](#) » [LEFTON](#) » LEFTON BFWS2402 3 Hole Bathroom Faucet With Temperature Display Installation Guide 

### Contents

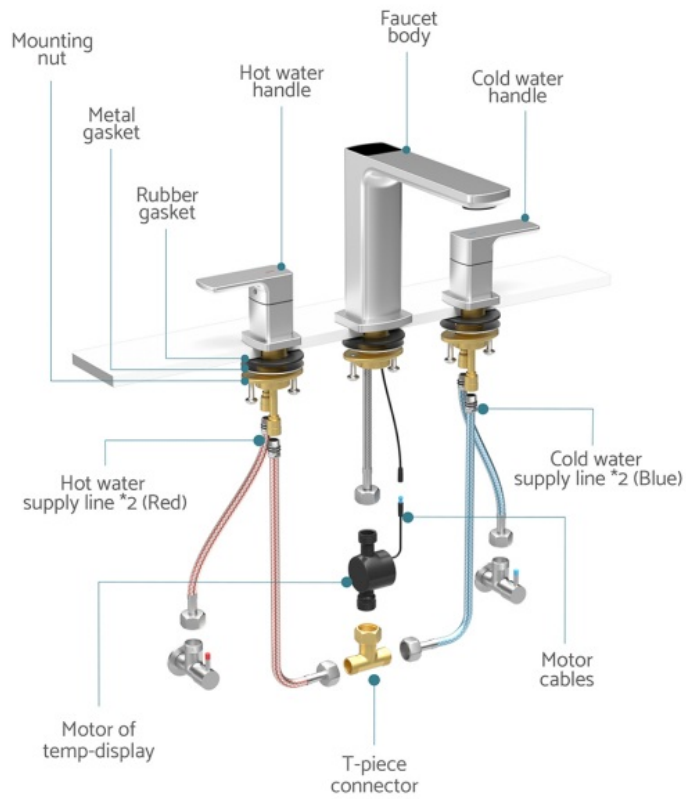
- [1 LEFTON BFWS2402 3 Hole Bathroom Faucet With Temperature Display](#)
- [2 Diagram and Parts List](#)
- [3 INSTALLATION](#)
- [4 Comprehensive installation diagram](#)
- [5 Documents / Resources](#)
  - [5.1 References](#)
- [6 Related Posts](#)

# LEFTON

### LEFTON BFWS2402 3 Hole Bathroom Faucet With Temperature Display

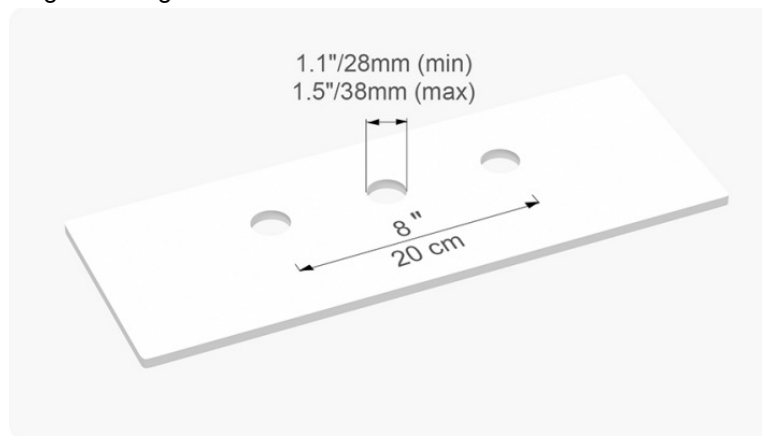


### Diagram and Parts List

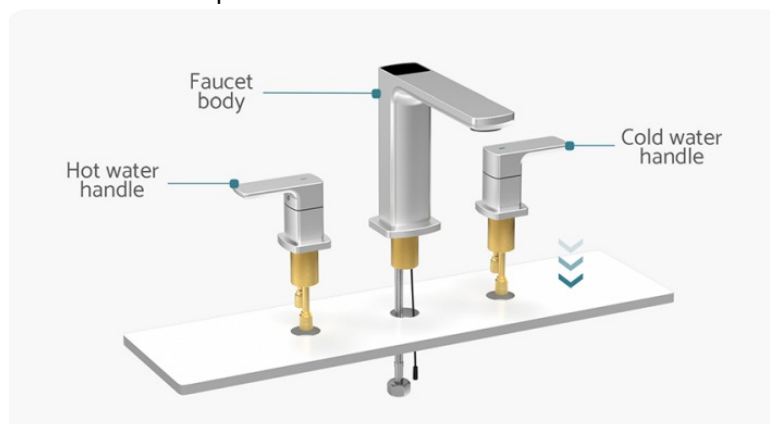


## INSTALLATION

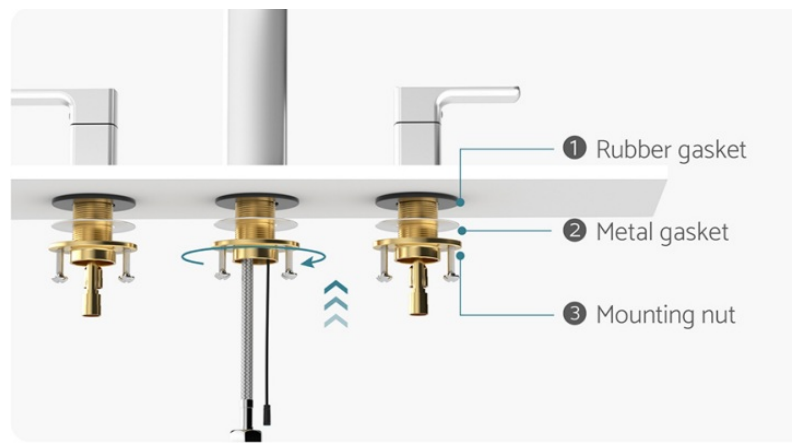
**STEP 1:** Countertop opening size diagram.



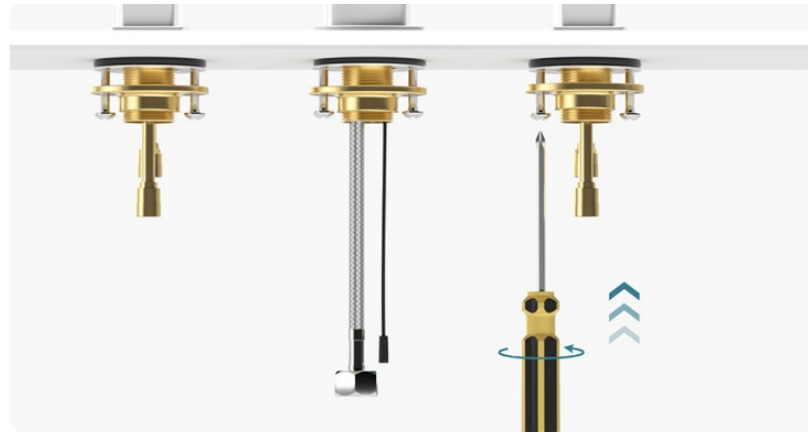
**STEP 2:** Install the faucet to the countertop.



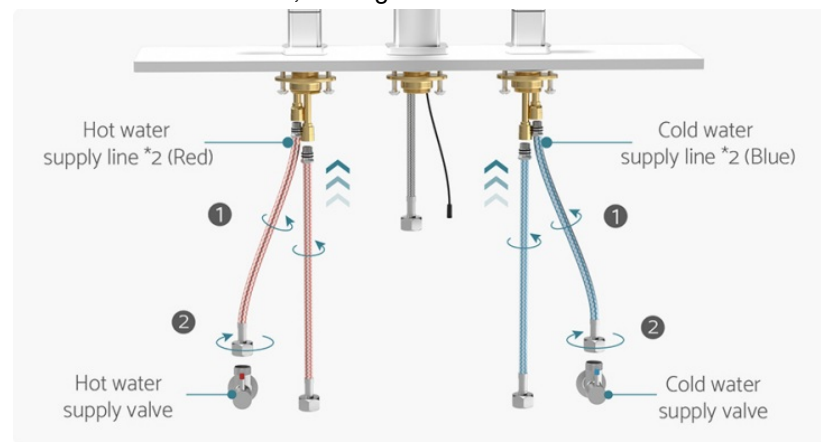
**STEP 3:** Install gaskets, nut and fasten the screws.



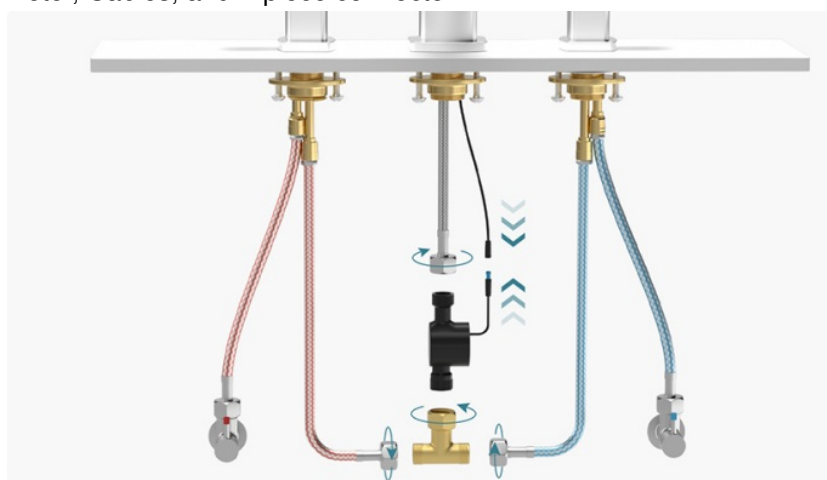
**STEP 4:** Fasten the screws with the screwdriver.



**STEP 5:** Connect the Hot and cold water lines, and tighten them clockwise.



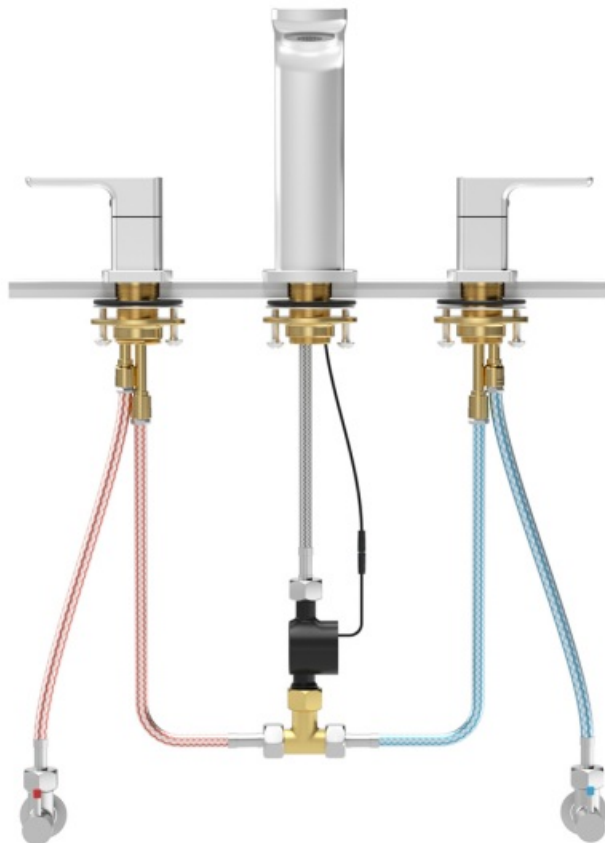
**STEP 6:** Connect the Motor, Cables, and T-piece connector.




**STEP 7:** Turn the faucet on and check for leaks. (Do not turn the faucet on before the installation is complete)



**Comprehensive installation diagram**



**Documents / Resources**

	<p><a href="#">LEFTON BFWS2402 3 Hole Bathroom Faucet With Temperature Display</a> [pdf] Installation Guide</p> <p>BFWS2402 3 Hole Bathroom Faucet With Temperature Display, BFWS2402, 3 Hole Bathroom Faucet With Temperature Display, Bathroom Faucet With Temperature Display, Faucet With Temperature Display, Temperature Display, Display</p>
-----------------------------------------------------------------------------------	-----------------------------------------------------------------------------------------------------------------------------------------------------------------------------------------------------------------------------------------------------------------------------------------------------------------------------------------------------

References

- [User Manual](#)

Manuals+, Privacy Policy

This website is an independent publication and is neither affiliated with nor endorsed by any of the trademark owners. The "Bluetooth®" word mark and logos are registered trademarks owned by Bluetooth SIG, Inc. The "Wi-Fi®" word mark and logos are registered trademarks owned by the Wi-Fi Alliance. Any use of these marks on this website does not imply any affiliation with or endorsement.