

LED WORLD™
H-2818WIN HUB
WiFi Controller



LEDWORLD H-2818WIN HUB WiFi Controller Instruction Manual

[Home](#) » [LEDWORLD](#) » LEDWORLD H-2818WIN HUB WiFi Controller Instruction Manual 

Contents

- [1 LEDWORLD H-2818WIN HUB WiFi Controller](#)
- [2 Product Usage Instructions](#)
- [3 FEATURE](#)
- [4 INCLUDED ITEMS](#)
- [5 PRODUCT PARAMETERS](#)
- [6 WIRING DIAGRAM](#)
- [7 PRODUCT DIMENSION](#)
- [8 APP PAIRING GUIDE](#)
- [9 RESET/UNPAIRING GUIDE](#)
- [10 COMPATIBLE HUEDA™ SERIES COLOR RECEIVERS/CONTROLLERS](#)
- [11 FEDERAL COMMUNICATIONS COMMISSION \(FCC\) STATEMENT](#)
- [12 THREE-YEAR LIMITED WARRANTY](#)
- [13 Documents / Resources](#)
 - [13.1 References](#)



LEDWORLD H-2818WIN HUB WiFi Controller



Specifications:

- **Model:** H-2818WIN
- **Operation Voltage:** 12V DC (0.3A Max.)
- DMX512 signal output
- WLAN connectivity
- Compatible with the HUEDATM family of color receivers and DMX512 color decoders

Product Usage Instructions

Method 1: Connect your smartphone with your home network router (WiFi-RF)

1. Ensure the HUEDATM Hub is powered on.
2. Connect your smartphone to your home network router.
3. Download and open the EasyLighting App.
4. Use the app to control the HUEDATM family of color receivers.

Method 2: Connect your smartphone with HUEDATM HUB H-2818WIN (WiFi -RF)

1. Power on the HUEDATM Hub.
2. Connect your smartphone to the HUEDATM Hub's WiFi network.
3. Open the EasyLighting App on your smartphone.
4. Use the app to control compatible HUEDATM RGB receivers.

BEFORE YOU BEGIN, READ ALL WARNINGS AND INSTALLATION INSTRUCTIONS (AS THEY MAY HAVE BEEN UPDATED FROM PREVIOUS VERSIONS). IMPROPER INSTALLATION(S) PRESENT HAZARDS, WHICH CAN RESULT IN PERSONAL INJURY OR PROPERTY DAMAGE.

SAFETY & WARNINGS

- Only power with a power supply that has been included in the box.
- Ensure the applicable wire is installed between the driver, fixture, and any controls in between. When choosing

wire, factor in voltage drop, amperage rating, and type (in-wall rated, wet location rated, etc.). Inadequate wire installation could overheat wires and cause fire.

- This product is rated for indoor use only (dry locations). Avoid the direct sunlight.
- Do not modify this product beyond the instructions in this guide or the warranty will be void.
- Wiring diagrams in this installation guide for basic installations. Please carefully review your installation before proceeding.

FEATURE

HUEDA™ Hub easily connects to your router to allow smartphone devices to control the HUEDA™ family of color receivers and DMX512 color decoders.



Download the Easy Lighting App

Note: We don't provide software support for this app



INCLUDED ITEMS

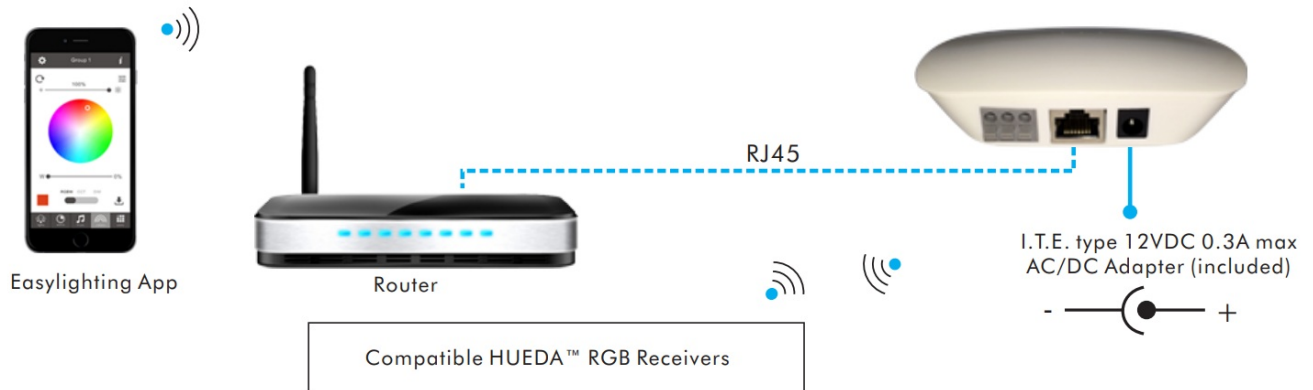
- 12VDC Power Adapter
- HUEDA™ Hub Wifi Controller
- LAN Cable (2 meters (6.56ft))

PRODUCT PARAMETERS

- **Part No:** H-2818WIN
- **Operation Voltage:** 12V DC (0.3A Max.)

WIRING DIAGRAM

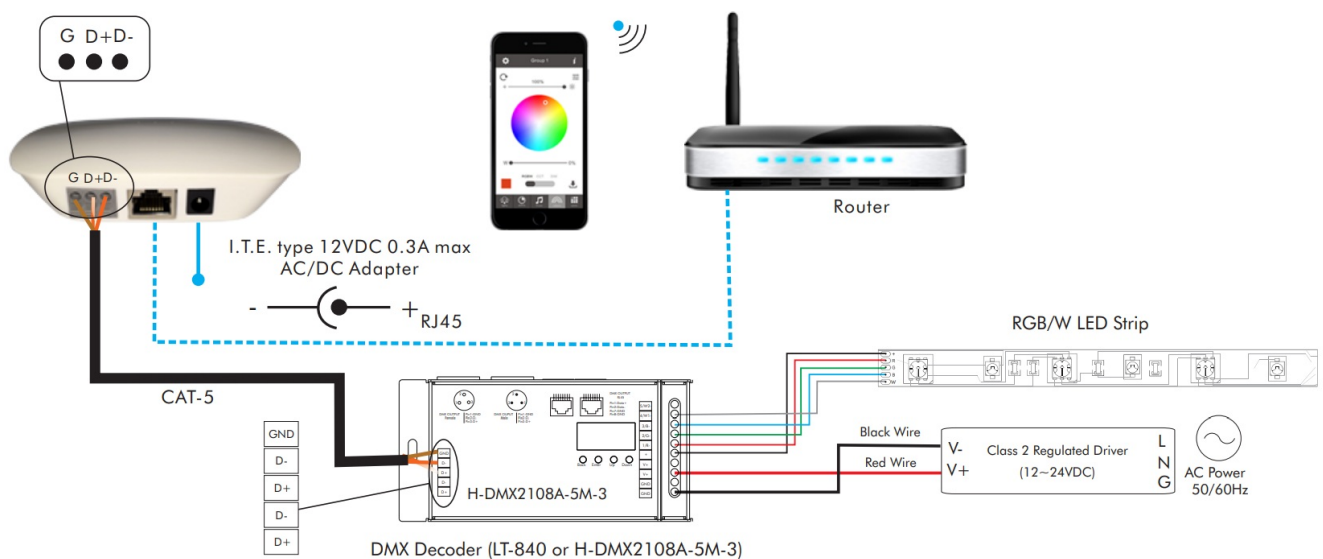
1. Method 1: Connect your smartphone with your home net router(WiFi-RF)



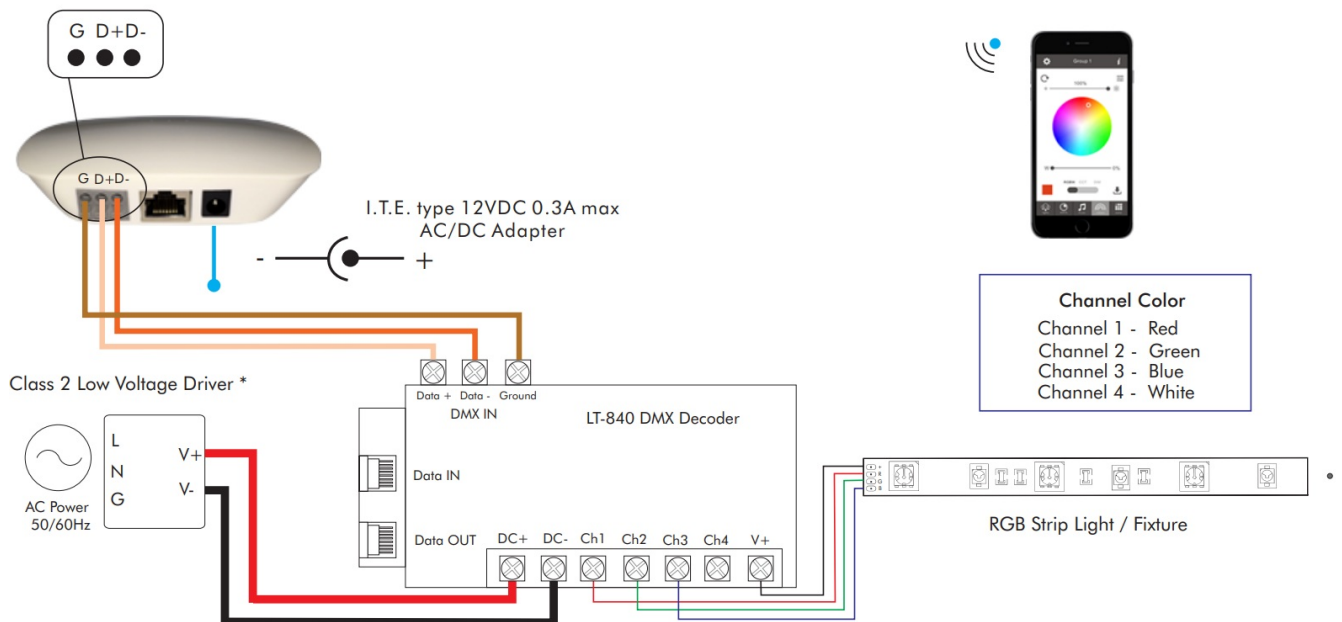
2. Method 2: Connect your smartphone with HUEDA™ HUB H-2818WIN (WiFi -RF)



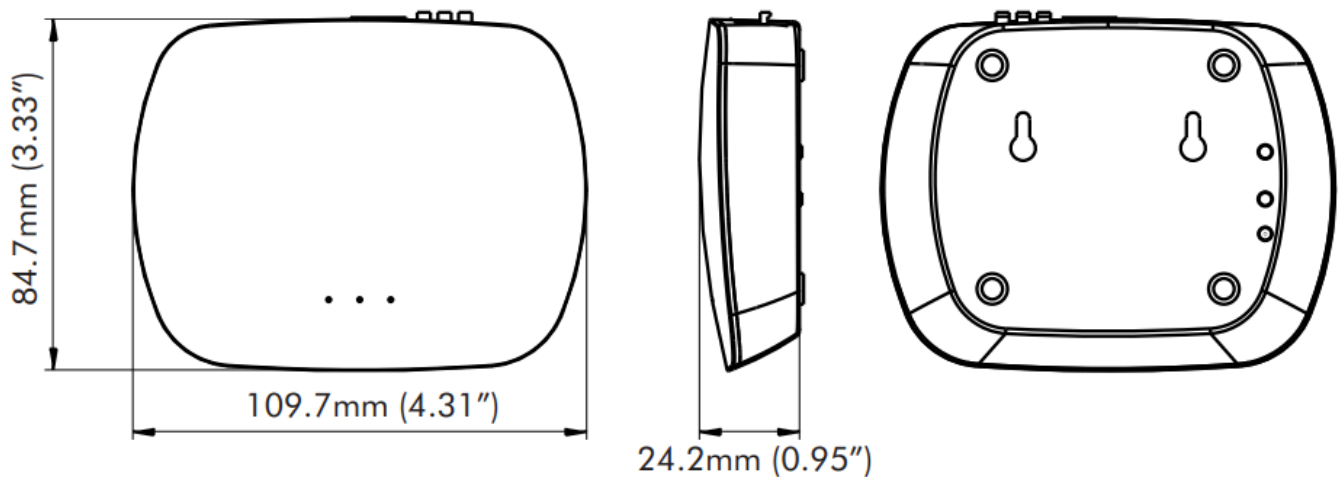
3. Method 3: Connect your smartphone device to your home router to color control DMX512



4. Method 4: Connect with LT-840 DMX decoder

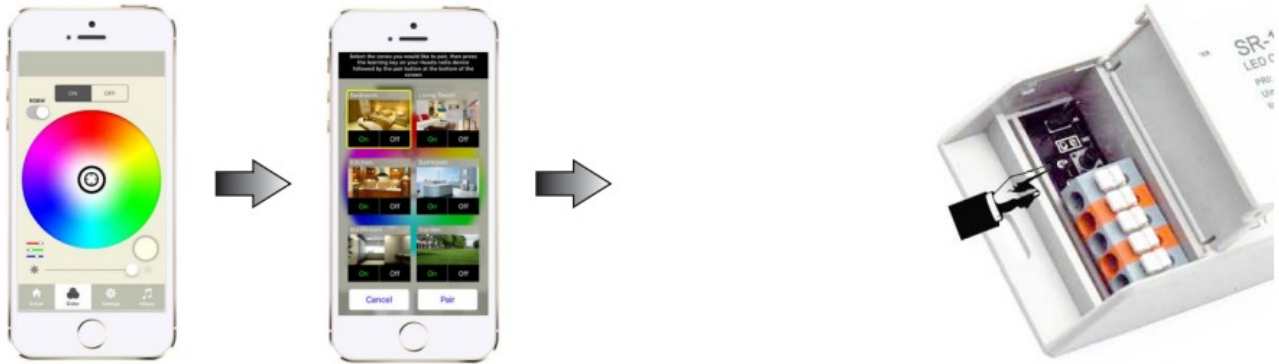


PRODUCT DIMENSION

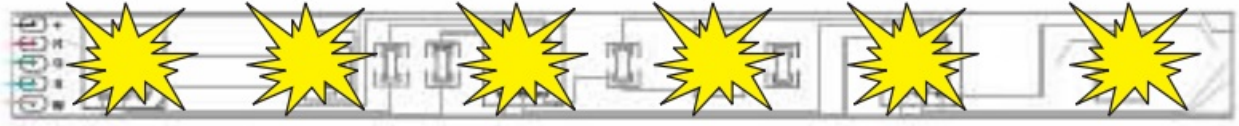


APP PAIRING GUIDE

- Step 1:** Turn on the HUEDA™ Hub Master Controller. Light indicates that the HUEDA™ Hub master controller is turned on.
- Step 2:** On your smart device go to wifi settings. From the available wifi networks look for Easy lighting. Select the Easy lighting as the wifi network. Enter the password 0123456789. If you plugin to an ethernet jack at the back, this step is not required.
- Step 3:** Open the App on your device. Select the Pair button in the app Color Tab. Select the zones you would like to pair, then press the learning key on your HUEDA radio device followed by the pair button at the bottom of the app screen. For DMX wired mode, please look DMX decoder for further instructions.

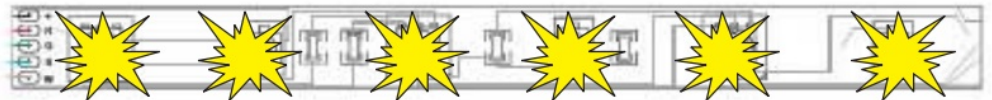


4. **Step 4:** The Connected LED light will blink to confirm zone designation and the corresponding color will light



RESET/UNPAIRING GUIDE

Press at learning button on the receiver for over 5 seconds until the LED light flashes. This unpairs the receiver.



COMPATIBLE HUEDA™ SERIES COLOR RECEIVERS/CONTROLLERS

5CH DMX Decoder
(LT-995)



32CH DMX Decoder
(LT-932-OLED)



FEDERAL COMMUNICATIONS COMMISSION (FCC) STATEMENT

This device complies with part 15 of the FCC rules. Operation is subject to the following two conditions:

1. This device may not cause harmful interference, and
2. This device must accept any interference received, including interference that may cause undesired operation.

Note: The manufacturer is not responsible for any radio or tv interference caused by unauthorized modifications to this equipment.

Such modifications will void the user’s authority to operate the equipment and warranty. LED World Inc. And its providers will never be liable to you or any other person for any indirect, incidental, consequential, special, punitive or exemplary loss or damage arising from, connected with, the purchase of products, including but not limited to loss of data, business, markets, cost of labor, savings, income, profits, use, production, reputation or goodwill, anticipated or otherwise, or economic loss, under any theory of liability (whether in contract, tort, strict liability or any other theory or law or equity), regardless of any negligence or other fault or wrongdoing (including without limitation gross negligence and fundamental breach) by led world inc. Or any person for whom led world inc. Is responsible, and even if led world inc. Has been advised of the possibility of such loss or damage being incurred.

THREE-YEAR LIMITED WARRANTY

LED WORLD INC. warranties this product for three year (some exceptions may apply) from the date of shipping unless otherwise noted in writing. This warranty is expressly in lieu of all other warranties expressed or implied. Under this Limited Warranty, the obligation of the company is limited to replacing on a prorated basis, at its option, any component found to be defective. This Limited Warranty does not apply to damage caused by buyer or alteration to the product or incorrect power supply. Factory warranties are covered by the original manufacturer and claims must be submitted to them. Use only with LED World’s regulated class 2 power supply. If a product is defective, we will replace the product with similar or identical product or at our option a credit towards a future purchase. To make a claim under this warranty, obtain a return authorization number.

LED World Inc. | #130 10615 48 ST SE | CALGARY, AB T2C 2B7 | CANADA | Version 1.1 10/02/24


Copyright © 2024 LED WORLD INC™. All Rights Reserved. We are not responsible for errors or omissions. Product and specifications subject to change without notice. Registered trademarks are owned by their respective registers, or licensee(s)FAQ

How do I pair my smart device with the HUEDATM Hub?

To pair your smart device with the HUEDATM Hub:

- 1. Turn on the HUEDATM Hub Master Controller.
- 2. Connect your smart device to the Easy Lighting Wi-Fi network using password 0123456789.
- 3. Open the Easylighting App and select the Pair button in the Color Tab.
- 4. Select the zones you want to pair and follow on-screen instructions to complete pairing.
- 5. For DMX wired mode, refer to the DMX decoder instructions for further guidance.
- 6. The Connected LED light will blink to confirm zone designation and color selection.

Documents / Resources



[LEDWORLD H-2818WIN HUB WiFi Controller](#) [pdf] Instruction Manual
H-2818WIN, LT-840, H-2818WIN HUB WiFi Controller, H-2818WIN, HUB WiFi Controller, WiFi Controller, Controller

References

- [LED World Lighting - A Commercial LED lighting supplier](#)
- [User Manual](#)

Manuals+. Privacy Policy

This website is an independent publication and is neither affiliated with nor endorsed by any of the trademark owners. The "Bluetooth®" word mark and logos are registered trademarks owned by Bluetooth SIG, Inc. The "Wi-Fi®" word mark and logos are registered trademarks owned by the Wi-Fi Alliance. Any use of these marks on this website does not imply any affiliation with or endorsement.